

LEA Name : Shamokin Area SD
Address : 2000 W State St
Coal Township , PA 17866

County : Northumberland
AUN Number : 116496503
LEA Type : SD

**Annual Financial Report
Accuracy Certification Statement**

For Fiscal Year Ending
6/30/2024

Pennsylvania Department of Education
&
Office of Comptroller Operations

PDE-2056: Intermediate Unit
PDE-2057: School District, AVTS/CTC, Charter School,
and Special Program Jointure

CERTIFICATION: By signing this page I agree that the electronic data submitted is a complete and accurate statement of the financial operations and status of the local education agency for the fiscal year. It has been prepared in accordance with generally accepted accounting principles and established Commonwealth of PA reporting guidelines.



Chief School Administrator Signature

NOVember 19, 2024

Date



Board Secretary Signature

November 19, 2024

Date

Karen Colangelo

Contact Person

kcolangelo@indians.k12.pa.us

Contact Person E-mail Address

(570)648-5752 Ext :4123

Contact Person Telephone Number

(570)648-2592

Contact Person Fax Number

Audit Certification
Annual Financial Report:
For Fiscal Year Ending 6/30/2024
(Pursuant to PA School Code Section 218(b))

LEA Name : Shamokin Area SD
AUN Number : 116496503
County : Northumberland

Audit Certification Due: 12/31/2024

This certification is applicable to the Annual Financial Report data submitted through the Consolidated Financial Reporting System (CFRS).

CERTIFICATION: By signing this page I agree that the financial statements of the school have been properly audited as noted above pursuant to Article XXIV, and in the auditor's professional opinion, the Annual Financial Report (PDE-2057) submitted through CFRS is materially consistent with the audited financial statements.

Chief School Administrator



Signature

12/5/24

Date

Board Secretary



Signature

12/4/24

Date

Karen Colangelo

Contact Person

kcolangelo@indians.k12.pa.us

Contact Person E-mail Address

(570)648-5752 Ext :4123

Contact Person Telephone Number

(570)648-2592

Contact Person Fax Number

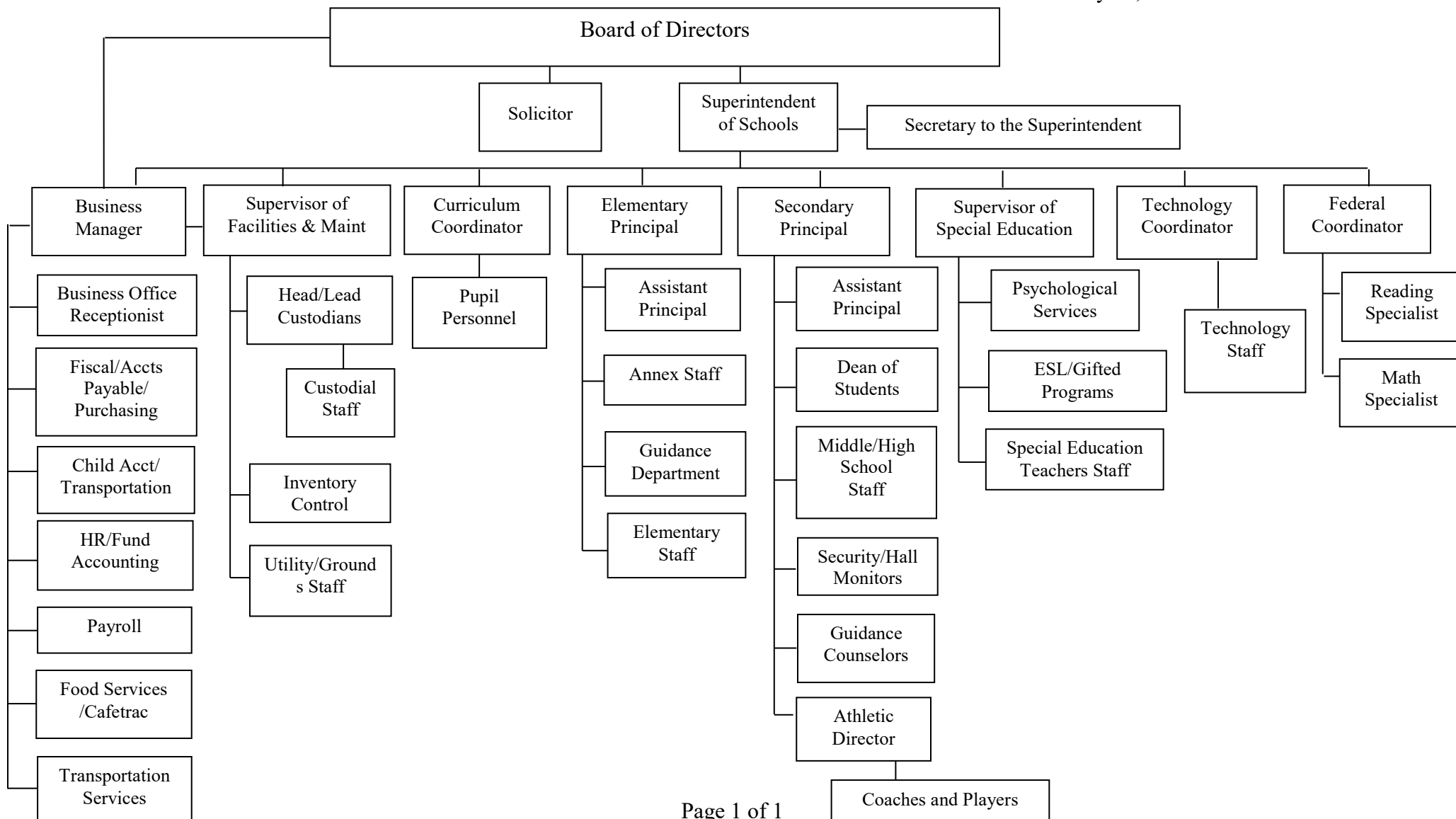
SECTION: LOCAL BOARD PROCEDURES

TITLE: ORGANIZATION CHART

ADOPTED: UNKNOWN

REVISED: February 18, 2020

SHAMOKIN AREA SCHOOL DISTRICT





Book	Policy Manual
Section	600 Finances
Title	GASB Statement 34
Code	622
Status	Active
Legal	<u>1. 24 P.S. 613</u> <u>2. 24 P.S. 218</u>
Adopted	November 11, 2003

Purpose

The Board recognizes the need to implement the required accounting and financial reporting standards stipulated by the Pennsylvania Department of Education.[[1](#)]

The primary objectives of implementing the GASB Statement 34 are to assure compliance with state requirements, and properly account for both the financial and economic resources of the district.

Authority

Participation of the school district in any such activity shall be in accordance with Board policy.[[2](#)]

Delegation of Responsibility

The responsibility to coordinate the compilation and preparation of all information necessary to implement this policy is delegated to the Business Manager.

The designated individual shall be responsible for implementing the necessary procedures to establish and maintain a fixed asset inventory, including depreciation schedules. Depreciation shall be computed on a straight-line basis over the useful lives of the assets, using an averaging convention. Normal maintenance and repairs shall be charged to expense as incurred; major renewals and betterments that materially extend the life or increase the value of the asset shall be capitalized. A schedule of accumulated depreciation shall be consistent from year to year. The basis for depreciation, including groups of assets and useful lives, shall be in writing and submitted for review to the independent auditors.

The Business Manager shall prepare the required Management Discussion and Analysis (MD&A). The MD&A shall be in the form required by GASB Statement 34 and shall be submitted to the Board for approval, prior to publication.

Prior to submission of the MD&A for Board approval, the district's independent auditors shall review the MD&A, in accordance with SAS No. 52, "Required Supplementary Information."

Guidelines

In order to associate debt with acquired assets and to avoid net asset deficits, any asset that has been acquired with debt proceeds shall be capitalized, regardless of the cost of the asset. The asset life of these assets shall be considered relative to the time of the respective debt amortizations.

For all other assets not acquired by debt proceeds, the dollar value of any single item for inclusion in the fixed assets accounts shall be not less than \$1,500.

The capitalization threshold shall be set at a level that will capture at least eighty percent (80%) of all fixed assets.

The assets listed below do not normally individually meet capitalization threshold criteria:

1. Library books.
2. Classroom texts.
3. Computer equipment.
4. Classroom furniture.

For group asset depreciation purposes, the estimated useful life of the group may be based on the weighted average or simple average of the useful life of individual items, or on an assessment of the life of the group as a whole. Periodically, the district shall review the estimated life of groups of assets and adjust the remaining depreciation life of the group.

Assets that fall below the capitalization threshold for GASB 34 reporting purposes may still be significant for insurance, warranty service, and obsolescence/ replacement policy tracking purposes. The district may record and maintain these non-GASB 34 asset inventories in subsidiary ledgers.

<u>Val Number</u>	<u>Description</u>	<u>Justification</u>
16230	<p>REP Fund 51 – Net Position - Beginning of Fiscal Year must equal Prior Year AFR, Net Position - End of Year. Justifications to this error must fully explain the situation that prompted a fund balance restatement. "Auditor Adjustment" is not a sufficient justification.</p> <p>REP Fund 51 – Net Position - Beginning of Fiscal Year: \$2,697,195.00 REP Fund 51, Prior Year AFR, Net Position - End of Year: \$2,707,679.00</p>	<p>Per auditor's reports, the net position beginning is \$2,697,195. The depreciaton of 2223 year was entered as a negative which accounts for this difference.</p>
30116	<p>Revenue Detail: A large amount has been reported as Earnings on Investments in Fund 32, account 6500, which should only include interest and/or dividend earnings. Correct or provide a brief explanation of the revenue reported.</p> <p>Revenue Detail 6500, Fund 32: \$40,788.79</p>	<p>This is interest earned which is reflected on bank statements</p>
50420	<p>SESS - 2150 Speech Pathology and Audiology Services: SESS Schedule amounts for Special Education vary from prior year by 40% or more. Correct the data or enter a justification.</p> <p>SESS Schedule 2150: \$0.00 Prior Year SESS Schedule 2150: \$107.11</p>	<p>Services were not needed this year. Student graduated in prior year.</p>
50450	<p>SESS - 2350 Legal and Accounting Services: SESS Schedule amounts for Special Education vary from prior year by 40% or more. Correct the data or enter a justification.</p> <p>SESS Schedule 2350: \$15,629.79 Prior Year SESS Schedule 2350: \$6,411.39</p>	<p>Legal services were needed for due process claims.</p>
50460	<p>SESS - 2420 Medical Services: SESS Schedule amounts for Special Education vary from prior year by 40% or more. Correct the data or enter a justification.</p> <p>SESS Schedule 2420: \$8,229.87 Prior Year SESS Schedule 2420: \$1,053.88</p>	<p>In student's iep, one to one nurse service is necessary.</p>

LEA : 116496503 Shamokin Area SD

Printed 12/5/2024 11:17:45 AM

Amounts Expressed in Whole Dollars		<u>General Fund</u> <u>(10)</u>	<u>Student Sponsored</u> <u>Activity Fund</u> <u>(21)</u>	<u>Public Purpose Trust</u> <u>(27)</u>	<u>Other Compt Approved</u> <u>(28)</u>	<u>Athletic / Activity</u> <u>(29)</u>
Assets And Deferred Outflows Of Resources						
Assets						
0100	Cash and Cash Equivalents	3,811,893	226,343			
0110	Investments	179,413				
0120	Taxes Receivable	4,391,587				
0130	Due From Other Funds	143,815				
0141	Due From Other Governments	4,683,805				
0142	State Revenue Receivable	1,080,467				
0143	Federal Revenue Receivable	489,345				
0145	Other Intergovernmental Revenue Receivable					
0146	Due from Primary Government					
0147	Due from Component Unit					
0150	Other Receivables					
0170	Inventories					
0180	Prepaid Expenses (Expenditures)					
0190	Other Current Assets					
Total Assets		\$14,780,325	\$226,343			
0910	Deferred Outflows of Resources					
Total Assets And Deferred Outflows Of Resources		\$14,780,325	\$226,343			

LEA : 116496503 Shamokin Area SD

Printed 12/5/2024 11:17:45 AM

Amounts Expressed in Whole Dollars		<u>Capital Reserve (690.</u> <u>1850)</u> <u>(31)</u>	<u>Capital Reserve (1431)</u> <u>(32)</u>	<u>Other Capital Projects</u> <u>Fund</u> <u>(39)</u>	<u>Debt Service</u> <u>(40)</u>	<u>Permanent</u> <u>(90)</u>
Assets And Deferred Outflows Of Resources						
Assets						
0100	Cash and Cash Equivalents		563,848	131		
0110	Investments					
0120	Taxes Receivable					
0130	Due From Other Funds					
0141	Due From Other Governments					
0142	State Revenue Receivable					
0143	Federal Revenue Receivable					
0145	Other Intergovernmental Revenue Receivable					
0146	Due from Primary Government					
0147	Due from Component Unit					
0150	Other Receivables		7,955			
0170	Inventories					
0180	Prepaid Expenses (Expenditures)					
0190	Other Current Assets					
Total Assets			\$571,803	\$131		
0910	Deferred Outflows of Resources					
Total Assets And Deferred Outflows Of Resources			\$571,803	\$131		

LEA : 116496503 Shamokin Area SD

Printed 12/5/2024 11:17:45 AM

Amounts Expressed in Whole Dollars		<u>Total Governmental</u>
		<u>Funds</u>
Assets And Deferred Outflows Of Resources		
Assets		
0100	Cash and Cash Equivalents	4,602,215
0110	Investments	179,413
0120	Taxes Receivable	4,391,587
0130	Due From Other Funds	143,815
0141	Due From Other Governments	4,683,805
0142	State Revenue Receivable	1,080,467
0143	Federal Revenue Receivable	489,345
0145	Other Intergovernmental Revenue Receivable	
0146	Due from Primary Government	
0147	Due from Component Unit	
0150	Other Receivables	7,955
0170	Inventories	
0180	Prepaid Expenses (Expenditures)	
0190	Other Current Assets	
Total Assets		\$15,578,602
0910	Deferred Outflows of Resources	
Total Assets And Deferred Outflows Of Resources		\$15,578,602

LEA : 116496503 Shamokin Area SD

Printed 12/5/2024 11:17:45 AM

Amounts Expressed in Whole Dollars		<u>General Fund</u> <u>(10)</u>	<u>Student Sponsored</u> <u>Activity Fund</u> <u>(21)</u>	<u>Public Purpose Trust</u> <u>(27)</u>	<u>Other Compt Approved</u> <u>(28)</u>	<u>Athletic / Activity</u> <u>(29)</u>
Liabilities And Deferred Inflows Of Resources And Fund Balances						
Liabilities						
0400	Due to Other Funds	7,955				
0411	Due to Other Governments					
0412	Due to Primary Government					
0413	Due to Component Unit					
0420	Accounts Payable	4,261,315				
0430	Contracts Payable					
0440	Current Portion of Long-Term Debt					
0450	Short-Term Payables	(50,000)				
0461	Accrued Salaries and Benefits	1,940,802				
0462	Payroll Deductions and Withholding	877,197				
0480	Unearned Revenues	15,877				
0490	Other Current Liabilities	150				
Total Liabilities		\$7,053,296				
0950	Deferred Inflows of Resources	4,324,875				
Fund Balances						
0810	Nonspendable Fund Balance					
0820	Restricted Fund Balance		226,343			
0830	Committed Fund Balance					
0840	Assigned Fund Balance	16,874				
0850	Unassigned Fund Balance	3,385,280				
Total Fund Balances		\$3,402,154	\$226,343			
Total Liabilities, Deferred Inflows Of Resources And Fund Balances		\$14,780,325	\$226,343			

LEA : 116496503 Shamokin Area SD

Amounts Expressed in Whole Dollars		<u>Capital Reserve (690.</u> <u>1850)</u> <u>(31)</u>	<u>Capital Reserve (1431)</u> <u>(32)</u>	<u>Other Capital Projects</u> <u>Fund</u> <u>(39)</u>	<u>Debt Service</u> <u>(40)</u>	<u>Permanent</u> <u>(90)</u>
Liabilities And Deferred Inflows Of Resources And Fund Balances						
Liabilities						
0400	Due to Other Funds					
0411	Due to Other Governments					
0412	Due to Primary Government					
0413	Due to Component Unit					
0420	Accounts Payable		242,843	131		
0430	Contracts Payable					
0440	Current Portion of Long-Term Debt					
0450	Short-Term Payables					
0461	Accrued Salaries and Benefits					
0462	Payroll Deductions and Withholding					
0480	Unearned Revenues					
0490	Other Current Liabilities					
Total Liabilities			\$242,843	\$131		
0950	Deferred Inflows of Resources					
Fund Balances						
0810	Nonspendable Fund Balance					
0820	Restricted Fund Balance		328,960			
0830	Committed Fund Balance					
0840	Assigned Fund Balance					
0850	Unassigned Fund Balance					
Total Fund Balances			\$328,960			
Total Liabilities, Deferred Inflows Of Resources And Fund Balances			\$571,803	\$131		

LEA : 116496503 Shamokin Area SD

Printed 12/5/2024 11:17:45 AM

Amounts Expressed in Whole Dollars		<u>Total Governmental</u> <u>Funds</u>
Liabilities And Deferred Inflows Of Resources And Fund Balances		
Liabilities		
0400 Due to Other Funds		7,955
0411 Due to Other Governments		
0412 Due to Primary Government		
0413 Due to Component Unit		
0420 Accounts Payable		4,504,289
0430 Contracts Payable		
0440 Current Portion of Long-Term Debt		
0450 Short-Term Payables		(50,000)
0461 Accrued Salaries and Benefits		1,940,802
0462 Payroll Deductions and Withholding		877,197
0480 Unearned Revenues		15,877
0490 Other Current Liabilities		150
Total Liabilities		\$7,296,270
0950 Deferred Inflows of Resources		4,324,875
Fund Balances		
0810 Nonspendable Fund Balance		
0820 Restricted Fund Balance		555,303
0830 Committed Fund Balance		
0840 Assigned Fund Balance		16,874
0850 Unassigned Fund Balance		3,385,280
Total Fund Balances		\$3,957,457
Total Liabilities, Deferred Inflows Of Resources And Fund Balances		\$15,578,602

LEA : 116496503 Shamokin Area SD

Printed 12/5/2024 11:17:58 AM

Amounts Expressed in Whole Dollars		<u>General Fund</u> <u>(10)</u>	<u>Student Sponsored</u> <u>Activity Fund</u> <u>(21)</u>	<u>Public Purpose Trust</u> <u>(27)</u>	<u>Other Compt Approved</u> <u>(28)</u>	<u>Athletic / Activity</u> <u>(29)</u>
Revenues						
6000	Revenue from Local Sources	8,736,270	308,733			
7000	Revenue from State Sources	25,444,813				
8000	Revenue from Federal Sources	3,065,201				
Total Revenues		\$37,246,284	\$308,733			
Expenditures						
1000	Instruction	25,228,814				
2000	Support Services	9,284,376				
3000	Operation of Non-Instructional Services	755,679	309,507			
4000	Facilities Acquisition, Construction and Improvement Services	25,000				
5110	Debt Service	851,250				
5130	Refund of Prior Year Revenues / Receipts					
5140	Leases and Other Right-to-Use Arrangements					
Total Expenditures		\$36,145,119	\$309,507			
Excess (Deficiency) Of Revenues Over Expenditures		\$1,101,165	(\$774)			
Other Financing Sources (Uses)						
9110	Face Value of Bonds Issued					
9120	Proceeds from Refunding of Bonds					
9130	Bond Premiums					
9200	Proceeds from Extended Term Financing, Leases, and Other Right-to-Use Arrangements	50,001				
9300	Interfund Transfers - IN	24,170				
9400	Sale of or Compensation for Loss of Fixed Assets					
9710	Transfers from Component Units					
9720	Transfers from Primary Governments					
9910	Other Financing Sources Not Listed in the 9000 Series					
9990	Insurance Recoveries	3,188				
5120	Debt Service – Refunded Bonds					
5150	Bond Discounts					
5200	Interfund Transfers – Out	254,359				
5300	Transfers Out to Component Units/Primary Governments					
Total Other Financing Sources (Uses)		(\$177,000)				

LEA : 116496503 Shamokin Area SD

Printed 12/5/2024 11:17:58 AM

Amounts Expressed in Whole Dollars		<u>Capital Reserve (690.1850)</u> <u>(31)</u>	<u>Capital Reserve (1431)</u> <u>(32)</u>	<u>Other Capital Projects</u> <u>Fund</u> <u>(39)</u>	<u>Debt Service</u> <u>(40)</u>	<u>Permanent</u> <u>(90)</u>
Revenues						
6000	Revenue from Local Sources		40,789	606		
7000	Revenue from State Sources					
8000	Revenue from Federal Sources					
Total Revenues			\$40,789	\$606		
Expenditures						
1000	Instruction					
2000	Support Services		61,192			
3000	Operation of Non-Instructional Services					
4000	Facilities Acquisition, Construction and Improvement Services		774,790			
5110	Debt Service					
5130	Refund of Prior Year Revenues / Receipts					
5140	Leases and Other Right-to-Use Arrangements					
Total Expenditures			\$835,982			
Excess (Deficiency) Of Revenues Over Expenditures			(\$795,193)	\$606		
Other Financing Sources (Uses)						
9110	Face Value of Bonds Issued					
9120	Proceeds from Refunding of Bonds					
9130	Bond Premiums					
9200	Proceeds from Extended Term Financing, Leases, and Other Right-to-Use Arrangements					
9300	Interfund Transfers - IN		254,359			
9400	Sale of or Compensation for Loss of Fixed Assets					
9710	Transfers from Component Units					
9720	Transfers from Primary Governments					
9910	Other Financing Sources Not Listed in the 9000 Series					
9990	Insurance Recoveries					
5120	Debt Service – Refunded Bonds					
5150	Bond Discounts					
5200	Interfund Transfers – Out			24,170		
5300	Transfers Out to Component Units/Primary Governments					
Total Other Financing Sources (Uses)			\$254,359	(\$24,170)		

LEA : 116496503 Shamokin Area SD

Printed 12/5/2024 11:17:58 AM

Amounts Expressed in Whole Dollars		<u>Total Governmental Funds</u>
Revenues		
6000	Revenue from Local Sources	9,086,398
7000	Revenue from State Sources	25,444,813
8000	Revenue from Federal Sources	3,065,201
Total Revenues		\$37,596,412
Expenditures		
1000	Instruction	25,228,814
2000	Support Services	9,345,568
3000	Operation of Non-Instructional Services	1,065,186
4000	Facilities Acquisition, Construction and Improvement Services	799,790
5110	Debt Service	851,250
5130	Refund of Prior Year Revenues / Receipts	
5140	Leases and Other Right-to-Use Arrangements	
Total Expenditures		\$37,290,608
Excess (Deficiency) Of Revenues Over Expenditures		\$305,804
Other Financing Sources (Uses)		
9110	Face Value of Bonds Issued	
9120	Proceeds from Refunding of Bonds	
9130	Bond Premiums	
9200	Proceeds from Extended Term Financing, Leases, and Other Right-to-Use Arrangements	50,001
9300	Interfund Transfers - IN	278,529
9400	Sale of or Compensation for Loss of Fixed Assets	
9710	Transfers from Component Units	
9720	Transfers from Primary Governments	
9910	Other Financing Sources Not Listed in the 9000 Series	
9990	Insurance Recoveries	3,188
5120	Debt Service – Refunded Bonds	
5150	Bond Discounts	
5200	Interfund Transfers – Out	278,529
5300	Transfers Out to Component Units/Primary Governments	
Total Other Financing Sources (Uses)		\$53,189

Amounts Expressed in Whole Dollars		<u>General Fund</u> <u>(10)</u>	<u>Student Sponsored</u> <u>Activity Fund</u> <u>(21)</u>	<u>Public Purpose Trust</u> <u>(27)</u>	<u>Other Compt Approved</u> <u>(28)</u>	<u>Athletic / Activity</u> <u>(29)</u>
Special And Extraordinary Items						
9920 Special Items – Gains						
9930 Extraordinary Items – Gains						
5520 Special Items – Losses						
5530 Extraordinary Items – Losses						
Net Change In Fund Balances		\$924,165	(\$774)			
Fund Balance						
0001 Fund Balance - Beginning of Fiscal Year		2,477,987	227,118			
Fund Balance - End Of Year		\$3,402,152	\$226,344			

Amounts Expressed in Whole Dollars		<u>Capital Reserve (690.</u> <u>1850)</u> <u>(31)</u>	<u>Capital Reserve (1431)</u> <u>(32)</u>	<u>Other Capital Projects</u> <u>Fund</u> <u>(39)</u>	<u>Debt Service</u> <u>(40)</u>	<u>Permanent</u> <u>(90)</u>
Special And Extraordinary Items						
9920	Special Items – Gains					
9930	Extraordinary Items – Gains					
5520	Special Items – Losses					
5530	Extraordinary Items – Losses					
Net Change In Fund Balances			(\$540,834)	(\$23,564)		
Fund Balance						
0001	Fund Balance - Beginning of Fiscal Year		869,793	23,564		
Fund Balance - End Of Year			\$328,959			

Amounts Expressed in Whole Dollars		<u>Total Governmental</u> <u>Funds</u>
Special And Extraordinary Items		
9920	Special Items – Gains	
9930	Extraordinary Items – Gains	
5520	Special Items – Losses	
5530	Extraordinary Items – Losses	
Net Change In Fund Balances		\$358,993
Fund Balance		
0001	Fund Balance - Beginning of Fiscal Year	3,598,462
Fund Balance - End Of Year		\$3,957,455

LEA : 116496503 Shamokin Area SD

Printed 12/5/2024 11:18:00 AM

Amounts Expressed in Whole Dollars	<u>Food Service</u> <u>(51)</u>	<u>Child Care</u> <u>Operations</u> <u>(52)</u>	<u>Other Enterprise</u> <u>(58)</u>	<u>TOTAL</u>	<u>Internal Service</u> <u>(60)</u>
Assets And Deferred Outflows Of Resources					
Current Assets					
0100 Cash and Cash Equivalents	2,930,471			2,930,471	
0110 Investments	247,452			247,452	
0130 Due From Other Funds					
0141 Due From Other Governments					
0142 State Revenue Receivable	5,618			5,618	
0143 Federal Revenue Receivable	6,097			6,097	
0146 Due from Primary Government					
0147 Due from Component Unit					
0150 Other Receivables					
0170 Inventories	59,168			59,168	
0180 Prepaid Expenses (Expenditures)					
0190 Other Current Assets					
Total Current Assets	\$3,248,806			\$3,248,806	
Noncurrent Assets					
0211 Land					
0212 Site Improvements (Net)					
0220 Buildings and Building Improvements (Net)					
0230 Tangible Property and Intangible Right-To-Use Assets (Net)	97,002			97,002	
0250 Construction in Progress					
0260 Long Term Prepayments					
0290 Other Noncurrent Assets					
Total Noncurrent Assets	\$97,002			\$97,002	
0910 Deferred Outflows of Resources					
Total Assets And Deferred Outflows Of Resources	\$3,345,808			\$3,345,808	

LEA : 116496503 Shamokin Area SD

Printed 12/5/2024 11:18:00 AM

Amounts Expressed in Whole Dollars	<u>Food Service</u> <u>(51)</u>	<u>Child Care</u> <u>Operations</u> <u>(52)</u>	<u>Other Enterprise</u> <u>(58)</u>	<u>TOTAL</u>	<u>Internal Service</u> <u>(60)</u>
Liabilities And Deferred Inflows Of Resources And Net Position					
Current Liabilities					
0400 Due to Other Funds	143,815			143,815	
0411 Due to Other Governments					
0413 Due to Component Unit					
0420 Accounts Payable	12,500			12,500	
0430 Contracts Payable					
0440 Current Portion of Long-Term Debt					
0450 Short-Term Payables					
0461 Accrued Salaries and Benefits					
0462 Payroll Deductions and Withholding					
0480 Unearned Revenues	84,659			84,659	
0490 Other Current Liabilities	4,279			4,279	
Total Current Liabilities	\$245,253			\$245,253	
Noncurrent Liabilities					
0510 Bonds Payable					
0520 Extended-Term Financing Agreements Payable					
0530 Lease and Other Right-To-Use Obligations					
0540 Accumulated Compensated Absences					
0550 Authority Lease Obligations					
0560 Other Post-Employment Benefits (OPEB)					
0570 Net Pension Liability					
0599 Other Noncurrent Liabilities					
Total Noncurrent Liabilities					
Total Liabilities	\$245,253			\$245,253	
0950 Deferred Inflows of Resources					
Net Position					
0791 Net Investment in Capital Assets	22,075			22,075	
0008 Restricted Net Position (0792 – 0798)					
0799 Unrestricted Net Position	3,078,480			3,078,480	
Total Net Position	\$3,100,555			\$3,100,555	
Total Liabilities And Deferred Inflows Of Resources And Net Position	\$3,345,808			\$3,345,808	

Amounts Expressed in Whole Dollars		<u>Food Service</u> <u>(51)</u>	<u>Child Care Operations</u> <u>(52)</u>	<u>Other Enterprise</u> <u>(58)</u>	<u>TOTAL</u>	<u>Internal Service</u> <u>(60)</u>
Operating Revenues						
6600	Food Service Revenue	124,180			124,180	
0071	Charges for Services					
0072	Other Operating Revenue					
Total Operating Revenues		\$124,180			\$124,180	
Operating Expenses						
100	Personnel Services – Salaries	74,836			74,836	
200	Personnel Services – Employee Benefits	63,642			63,642	
300	Purchased Professional and Technical Services					
400	Purchased Property Services	14,213			14,213	
500	Other Purchased Services	689,604			689,604	
600	Supplies	700,464			700,464	
740	Depreciation	6,515			6,515	
770	Amortization Expense	283			283	
810	Dues and Fees					
880	Refunds of Prior Years' Receipts					
890	Miscellaneous Expenditures					
Total Operating Expenses		\$1,549,557			\$1,549,557	
Operating Income (Loss)		(\$1,425,377)			(\$1,425,377)	
Non Operating Revenues (Expenses)						
6500	Earnings on Investments	17,543			17,543	
6830	Federal Revenue from Intermediary Sources					
6920	Contributions and Donations from Private Sources	55,298			55,298	
6930	Gains or Losses on Sale of Fixed Assets					
6991	Refunds of a Prior Year Expenditure					
7000	Revenue from State Sources	51,081			51,081	
8000	Revenue from Federal Sources	1,704,816			1,704,816	
9990	Insurance Recoveries					
820	Claims and Judgments Against the LEA					
830	Interest					
TOTAL Non Operating Revenues (Expenses)		\$1,828,738			\$1,828,738	
Income (Loss) Before Contributions And Transfers		\$403,361			\$403,361	

Amounts Expressed in Whole Dollars	<u>Food Service</u> <u>(51)</u>	<u>Child Care Operations</u> <u>(52)</u>	<u>Other Enterprise</u> <u>(58)</u>	<u>TOTAL</u>	<u>Internal Service</u> <u>(60)</u>
Contributions, Transfers, and Special and Extraordinary Items					
5200 Interfund Transfers – Out					
5300 Transfers Out to Component Units/Primary Governments					
5520 Special Items – Losses					
5530 Extraordinary Items – Losses					
9300 Interfund Transfers - IN					
9500 Capital Contributions					
9700 Transfers IN From Component Units/Primary Governments					
9920 Special Items – Gains					
9930 Extraordinary Items – Gains					
Change In Net Position	\$403,361			\$403,361	
0002 Net Position - Beginning of Fiscal Year	2,697,195			2,697,195	
0003 Accounting Changes / Residual Equity Transfers					
Net Position - End Of Year	\$3,100,556			\$3,100,556	

LEA : 116496503 Shamokin Area SD

Printed 12/5/2024 11:18:14 AM

Amounts Expressed in Whole Dollars		<u>Food Service</u> <u>(51)</u>	<u>Child Care Operations</u> <u>(52)</u>	<u>Other Enterprise</u> <u>(58)</u>	<u>TOTAL</u>	<u>Internal Service(60)</u>
Cash Flows From Operating Activities						
0011	Cash Receipts From Users	150,285			150,285	
0012	Cash Receipts From Assessments Made to Other Funds					
0013	Cash Receipts From Earnings on Investments					
0014	Cash Receipts From Other Operating Revenue					
0015	Cash Payments To Employees For Services	138,478			138,478	
0016	Cash Payments For Insurance Claims					
0017	Cash Payments To Suppliers For Goods and Services	1,322,787			1,322,787	
0018	Cash Payments For Other Operating Expenses					
Net Cash Provided By (Used For) Operating Activities		(\$1,310,980)			(\$1,310,980)	
Cash Flows From Non-Capital Financing Activities						
0021	Receipts From Local Sources - 6000					
0022	Receipts From State Sources - 7000	51,081			51,081	
0023	Receipts From Federal Sources -8000	1,704,816			1,704,816	
0024	Notes and Loans Received (Repaid)					
0025	Interest Paid on Notes/Loans - 5100-830					
0026	Operating Transfers In (Out)/Residual Equity Trans					
0027	Operating Transfers In (Out) Primary Government / Comp Unit	55,298			55,298	
0028	Receipts From Refund of Prior Year Expenditures - 6991					
0029	Special and Extraordinary Gains (losses)					
0030	Receipts from Insurance Recoveries -9990					
Net Cash Prov By (Used for) Non-Capital Financing Activities		\$1,811,195			\$1,811,195	
Cash Flows From Capital and Related Financing Activities						
0031	Payments For Fac Acq, Const, and Imp - 4000					
0032	Proceeds from Disposal of Capital Assets					
0033	Proceeds From Extended Term Financing - 9200					
0034	Principal Paid on Financing Agreements					
0035	Interest Paid on Financing Agreements - 5100-830					
0036	(Inc) Dec in Contributed Capital	(86,684)			(86,684)	
Net Cash Prov By (Used for) Capital and Related Financing Activities		(\$86,684)			(\$86,684)	
Cash Flows From Investing Activities						
0041	Earnings on Investments - 6500	17,543			17,543	
0042	Purchase of Inv Securities / Deposits to Inv Pools					
0043	Receipts From Investment Pool Withdrawals					
0044	Proceeds from Sale and Maturity of Inv Securities					

LEA : 116496503 Shamokin Area SD

Printed 12/5/2024 11:18:14 AM

0045 Loans Received (Paid)

Net Cash Prov By (Used for) Investing Activities	\$17,543	\$17,543
--	----------	----------

LEA : 116496503 Shamokin Area SD

Printed 12/5/2024 11:18:14 AM

	<u>Food Service</u> <u>(51)</u>	<u>Child Care Operations</u> <u>(52)</u>	<u>Other Enterprise</u> <u>(58)</u>	<u>TOTAL</u>	<u>Internal Service</u> <u>(60)</u>
Net Increase (Decrease) in Cash Flows	431,074			431,074	
0004 Cash and Cash Equivalents Beginning of Year	2,499,397			2,499,397	
Cash and Cash Equivalents at Year End	\$2,930,471			\$2,930,471	
Reconciliation of Operating Income (Loss) To Net Cash Provided by (Used For) Operating Activities					
0005 Operating Income (Loss) per REP	(1,425,377)			(1,425,377)	
Adjustments					
0051 Depreciation and Net Amortization	6,515			6,515	
0052 Provision for Uncollectible Accounts	136			136	
0053 Other Adjustments	171,978			171,978	
Effect of Changes in Assets, Liabilities, Deferred Outflows and Deferred Inflows					
0054 (Inc) Dec In Accounts Receivable (0120-0150)	14,389			14,389	
0055 Advances to Other Funds	(34,766)			(34,766)	
0056 (Inc) Dec in Inventories (0170)					
0057 (Inc) Dec in Prepaid Expenses (0180)					
0058 (Inc) Dec in Other Current or Noncurrent Assets	11,716			11,716	
0064 Deferred Outflows (0910)					
0059 Inc (Dec) in Accounts Payable (0400-0450)	(55,571)			(55,571)	
0060 Inc (Dec) in Accrued Salaries/Benefits (0461)					
0065 Inc (Dec) in Net Pension Liabilities (0570)					
0066 Inc (Dec) in Other Postemp Benefit Oblig (0560)					
0061 Inc (Dec) in Payroll Deductions/Withholding (0462)					
0062 Inc (Dec) in Unearned Revenue (0480)					
0063 Inc (Dec) in Other Current or Noncurrent Liabilities					
0067 Deferred Inflows (0950)					
Total Adjustments	\$114,397			\$114,397	
Cash Provided By (Used for) Total	(\$1,310,980)			(\$1,310,980)	

COMBINED STATEMENT OF CASH FLOWS
SCHEDULE OF NONCASH INVESTING, CAPITAL, AND FINANCING ACTIVITIES

Explanation of Transaction and Balance Sheet Effect	Amount
Total	

LEA : 116496503 Shamokin Area SD

Printed 12/5/2024 11:18:15 AM

Amounts Expressed in Whole Dollars		<u>Private Purpose Trust</u> <u>(71)</u>	<u>Investment Trust</u> <u>(72)</u>	<u>Pension Trust</u> <u>(73)</u>	<u>Student Activity Custodial</u> <u>(81)</u>
Assets And Deferred Outflows Of Resources					
Assets					
0100	Cash and Cash Equivalents	57,434			
0110	Investments			483,436	
0130	Due From Other Funds				
0140	Due from Other Governments, Primary Government and Component Units				
0150	Other Receivables				
0170	Inventories				
0180	Prepaid Expenses (Expenditures)				
0190	Other Current Assets				
0220	Buildings and Building Improvements (Net)				
0230	Tangible Property and Intangible Right-To-Use Assets (Net)				
Total Assets		\$57,434		\$483,436	
0910	Deferred Outflows of Resources				
Total Assets And Deferred Outflows Of Resources		\$57,434		\$483,436	

LEA : 116496503 Shamokin Area SD

Printed 12/5/2024 11:18:15 AM

Amounts Expressed in Whole Dollars		<u>Other Custodial</u> <u>(89)</u>	<u>Fiduciary Component Units</u> <u>(98)</u>	<u>Total Fiduciary Funds</u>
Assets And Deferred Outflows Of Resources				
Assets				
0100	Cash and Cash Equivalents			57,434
0110	Investments			483,436
0130	Due From Other Funds			
0140	Due from Other Governments, Primary Government and Component Units			
0150	Other Receivables			
0170	Inventories			
0180	Prepaid Expenses (Expenditures)			
0190	Other Current Assets			
0220	Buildings and Building Improvements (Net)			
0230	Tangible Property and Intangible Right-To-Use Assets (Net)			
Total Assets				\$540,870
0910	Deferred Outflows of Resources			
Total Assets And Deferred Outflows Of Resources				\$540,870

LEA : 116496503 Shamokin Area SD

Printed 12/5/2024 11:18:15 AM

Amounts Expressed in Whole Dollars		<u>Private Purpose Trust</u>	<u>Investment Trust</u>	<u>Pension Trust</u>	<u>Student Activity Custodial</u>
		<u>(71)</u>	<u>(72)</u>	<u>(73)</u>	<u>(81)</u>
Liabilities, Deferred Inflows Of Resources And Net Position					
Liabilities					
0400	Due to Other Funds				
0410	Due to Other Governments, Primary Government and Component Units				
0420	Accounts Payable				
0430	Contracts Payable				
0450	Short-Term Payables				
0460	Payroll Accruals and Withholdings				
0480	Unearned Revenues				
0490	Other Current Liabilities				
Total Liabilities					
0950	Deferred Inflows of Resources				
Net Position					
0791	Net Investment in Capital Assets			(50,251)	
0009	Restricted Net Position (0792 – 0798)			533,687	
0799	Unrestricted Net Position	57,434			
Total Net Position		\$57,434		\$483,436	
Total Liabilities, Deferred Inflows Of Resources And Net Position		\$57,434		\$483,436	

LEA : 116496503 Shamokin Area SD

Printed 12/5/2024 11:18:15 AM

Amounts Expressed in Whole Dollars		<u>Other Custodial</u>	<u>Fiduciary Component Units</u>	<u>Total Fiduciary Funds</u>
		(89)	(98)	
Liabilities, Deferred Inflows Of Resources And Net Position				
Liabilities				
0400	Due to Other Funds			
0410	Due to Other Governments, Primary Government and Component Units			
0420	Accounts Payable			
0430	Contracts Payable			
0450	Short-Term Payables			
0460	Payroll Accruals and Withholdings			
0480	Unearned Revenues			
0490	Other Current Liabilities			
Total Liabilities				
0950	Deferred Inflows of Resources			
Net Position				
0791	Net Investment in Capital Assets			(50,251)
0009	Restricted Net Position (0792 – 0798)			533,687
0799	Unrestricted Net Position			57,434
Total Net Position				\$540,870
Total Liabilities, Deferred Inflows Of Resources And Net Position				\$540,870

LEA : 116496503 Shamokin Area SD

Printed 12/5/2024 11:18:16 AM

Amounts Expressed in Whole Dollars	<u>Private Purpose Trust</u> <u>(71)</u>	<u>Investment Trust</u> <u>(72)</u>	<u>Pension Trust</u> <u>(73)</u>	<u>Student Activity</u> <u>Custodial</u> <u>(81)</u>	<u>Other Custodial</u> <u>(89)</u>	<u>Fiduciary Component</u> <u>Units</u> <u>(98)</u>
Additions						
0091 Gifts and Contributions						
0095 Net Investment Earnings	30		39,268			
0092 Other Additions						
Deductions						
0093 Scholarships Awarded	3,350					
0094 Other Deductions			3,914			
Change In Net Position	(\$3,320)		\$35,354			
0006 Net Position – Beginning of Fiscal Year	60,754		448,082			
0007 Net Position Held in Trust for Pension Benefits						
Net Position - End of Fiscal Year	\$57,434		\$483,436			

LEA : 116496503 Shamokin Area SD

Printed 12/5/2024 11:18:16 AM

Amounts Expressed in Whole Dollars		<u>Total Fiduciary</u>
		<u>Funds</u>
Additions		
0091	Gifts and Contributions	
0095	Net Investment Earnings	39,298
0092	Other Additions	
Deductions		
0093	Scholarships Awarded	3,350
0094	Other Deductions	3,914
Change In Net Position		\$32,034
0006	Net Position – Beginning of Fiscal Year	508,836
0007	Net Position Held in Trust for Pension Benefits	
Net Position - End of Fiscal Year		\$540,870

LEA : 116496503 Shamokin Area SD

General Fund (10)

Printed 12/5/2024 11:18:19 AM

Page - 1 of 4

	Revenue Reported In Current Year	Current Year Tax Accrual	Prior Year Tax Accrual	Taxes Collected In Current Year
Revenue from Local Sources				
6111 Current Real Estate Taxes	3,540,976.52			3,540,976.52
6113 Public Utility Realty Taxes	5,837.10			5,837.10
6114 Payments in Lieu of Current Taxes - State / Local	12,370.87			12,370.87
6120 Current Per Capita Taxes, Section 679	32,837.80			32,837.80
6141 Current Act 511 Per Capita Taxes	47,972.17			47,972.17
6143 Current Act 511 Local Services Taxes	32,021.04			32,021.04
6151 Current Act 511 Earned Income Taxes	1,730,353.71			1,730,353.71
6152 Current Act 511 Occupation Taxes	402,399.50			402,399.50
6153 Current Act 511 Real Estate Transfer Taxes	216,869.36			216,869.36
6155 Current Act 511 Business Privilege Taxes	281,517.63			281,517.63
6411 Delinquent Real Estate Taxes	508,277.98			508,277.98
6420 Delinquent Per Capita Taxes, Section 679	9,280.43			9,280.43
6451 Delinquent Act 511 Earned Income Taxes	58,234.12			58,234.12
6459 Delinquent Act 511 Taxes, Other Proportional Assessments	80,714.36			80,714.36
6500 Earnings on Investments	187,830.57			
6700 Revenues from LEA Activities	86,279.99			
6821 State Revenue Received from Other Pennsylvania Public LEAs	400,000.00			
6831 Federal Revenue Received from Other Pennsylvania Public LEAs	287.74			
6832 Federal IDEA Revenue Received as Pass Through	655,884.67			
6910 Rentals	65,801.14			
6920 Contributions and Donations from Private Sources	32,375.00			
6944 Receipts from Other LEAs in Pennsylvania - Education	81,623.13			
6949 Other Tuition from Patrons	88,887.49			
6991 Refunds of a Prior Year Expenditure	124,956.09			
6992 Energy Efficiency Revenues and Incentives	12,852.21			
6999 Other Revenues Not Specified Above	39,829.82			
TOTAL Revenue from Local Sources	\$8,736,270.44			\$6,959,662.59

	Revenue Reported <u>In Current Year</u>			
<u>Revenue from State Sources</u>				
7111 Basic Education Funding-Formula	16,416,437.78			
7160 Tuition for Orphans Subsidy	9,705.89			
7220 Vocational Education	241,507.10			
7271 Special Education funds for School-Aged Pupils	2,210,517.33			
7311 Pupil Transportation Subsidy	847,364.95			
7312 Nonpublic and Charter School Pupil Transportation Subsidy	103,180.00			
7320 Rental and Sinking Fund Payments / Building Reimbursement Subsidy	70,816.72			
7330 Health Services (Medical, Dental, Nurse, Act 25)	46,792.34			
7340 State Property Tax Reduction Allocation	443,267.55			
7362 School Mental Health & Safety and Security Grants	94,657.07			
7369 Other Safe School Grants	50,000.00			
7505 Ready to Learn Block Grant	514,641.00			
7599 Other State Revenue Not Listed Elsewhere in the 7000 Series	5,267.69			
7810 State Share of Social Security and Medicare Taxes	745,749.69			
7820 State Share of Retirement Contributions	3,644,908.26			
TOTAL Revenue from State Sources	\$25,444,813.37			

	Revenue Reported In Current Year			
<u>Revenue from Federal Sources</u>				
8514 Title I - Improving the Academic Achievement of the Disadvantaged	1,058,073.68			
8515 Title II - Preparing, Training, and Recruiting High Quality Teachers and Principals	127,966.22			
8517 Title IV - 21st Century Schools	142,232.04			
8519 Title V - Flexibility and Accountability	32,590.62			
8690 Other Restricted Federal Grants-in-Aid Through the Commonwealth of PA	1,392.50			
8733 ARRA - Qualified Zone Academy Bonds (QZAB)	98,550.03			
8743 ESSER II - Elementary and Secondary School Emergency Relief Fund	45,554.92			
8744 ARP ESSER - Elementary and Secondary School Emergency Relief Fund	1,197,484.60			
8749 Other CARES Act Funding	24,192.23			
8751 ARP ESSER Learning Loss	175,510.50			
8752 ARP ESSER Summer Programs	50,119.97			
8753 ARP ESSER Afterschool Programs	0.98			
8754 ARP ESSER Homeless Children and Youth Funds	16,995.71			
8755 ARP ESSER Emergency Relief for Other Educational Entities	6,876.05			
8810 School-Based Access Medicaid Reimbursement Program (SBAP) Reimbursements (Access)	65,642.66			
8820 Medical Assistance Reimbursement for Administrative Claiming (Quarterly) Program	22,018.01			
TOTAL Revenue from Federal Sources	\$3,065,200.72			

Revenue Reported In Current Year				
<u>Other Financing Sources</u>				
9290 Other Extended-Term Financing Proceeds	50,001.00			
9330 Capital Projects Fund Transfers	24,169.68			
9990 Insurance Recoveries	3,187.94			
TOTAL Other Financing Sources	\$77,358.62			
TOTAL FROM ALL SOURCES	\$37,323,643.15			\$6,959,662.59

LEA : 116496503 Shamokin Area SD

Printed 12/5/2024 11:18:23 AM

	<u>General Fund (10)</u>	<u>Student Sponsored Activity Fund (21)</u>	<u>Public Purpose Trust (27)</u>	<u>Other Compt Approved (28)</u>	<u>Athletic / Activity (29)</u>	<u>Capital Reserve (690, 1850) (31)</u>
6000 Revenue from Local Sources						
6111 Current Real Estate Taxes	3,540,976.52					
6113 Public Utility Realty Taxes	5,837.10					
6114 Payments in Lieu of Current Taxes - State / Local	12,370.87					
6120 Current Per Capita Taxes, Section 679	32,837.80					
6141 Current Act 511 Per Capita Taxes	47,972.17					
6143 Current Act 511 Local Services Taxes	32,021.04					
6151 Current Act 511 Earned Income Taxes	1,730,353.71					
6152 Current Act 511 Occupation Taxes	402,399.50					
6153 Current Act 511 Real Estate Transfer Taxes	216,869.36					
6155 Current Act 511 Business Privilege Taxes	281,517.63					
6411 Delinquent Real Estate Taxes	508,277.98					
6420 Delinquent Per Capita Taxes, Section 679	9,280.43					
6451 Delinquent Act 511 Earned Income Taxes	58,234.12					
6459 Delinquent Act 511 Taxes, Other Proportional Assessments	80,714.36					
6500 Earnings on Investments	187,830.57					
6700 Revenues from LEA Activities	86,279.99	308,732.58				
6821 State Revenue Received from Other Pennsylvania Public LEAs	400,000.00					
6831 Federal Revenue Received from Other Pennsylvania Public LEAs	287.74					
6832 Federal IDEA Revenue Received as Pass Through	655,884.67					
6910 Rentals	65,801.14					
6920 Contributions and Donations from Private Sources	32,375.00					
6944 Receipts from Other LEAs in Pennsylvania - Education	81,623.13					
6949 Other Tuition from Patrons	88,887.49					
6991 Refunds of a Prior Year Expenditure	124,956.09					
6992 Energy Efficiency Revenues and Incentives	12,852.21					
6999 Other Revenues Not Specified Above	39,829.82					
6000 Total Revenue from Local Sources	\$8,736,270.44	\$308,732.58				
7000 Revenue from State Sources						
7111 Basic Education Funding-Formula	16,416,437.78					
7160 Tuition for Orphans Subsidy	9,705.89					
7220 Vocational Education	241,507.10					
7271 Special Education funds for School-Aged Pupils	2,210,517.33					
7311 Pupil Transportation Subsidy	847,364.95					
7312 Nonpublic and Charter School Pupil Transportation Subsidy	103,180.00					
7320 Rental and Sinking Fund Payments / Building Reimbursement Subsidy	70,816.72					

LEA : 116496503 Shamokin Area SD

Printed 12/5/2024 11:18:23 AM

	<u>Capital Reserve</u> <u>(1431) (32)</u>	<u>Other Capital</u> <u>Projects Fund (39)</u>	<u>Debt Service (40)</u>	<u>Permanent (90)</u>	<u>Total</u>
6000 Revenue from Local Sources					
6111 Current Real Estate Taxes					3,540,976.52
6113 Public Utility Realty Taxes					5,837.10
6114 Payments in Lieu of Current Taxes - State / Local					12,370.87
6120 Current Per Capita Taxes, Section 679					32,837.80
6141 Current Act 511 Per Capita Taxes					47,972.17
6143 Current Act 511 Local Services Taxes					32,021.04
6151 Current Act 511 Earned Income Taxes					1,730,353.71
6152 Current Act 511 Occupation Taxes					402,399.50
6153 Current Act 511 Real Estate Transfer Taxes					216,869.36
6155 Current Act 511 Business Privilege Taxes					281,517.63
6411 Delinquent Real Estate Taxes					508,277.98
6420 Delinquent Per Capita Taxes, Section 679					9,280.43
6451 Delinquent Act 511 Earned Income Taxes					58,234.12
6459 Delinquent Act 511 Taxes, Other Proportional Assessments					80,714.36
6500 Earnings on Investments	40,788.79	605.53			229,224.89
6700 Revenues from LEA Activities					395,012.57
6821 State Revenue Received from Other Pennsylvania Public LEAs					400,000.00
6831 Federal Revenue Received from Other Pennsylvania Public LEAs					287.74
6832 Federal IDEA Revenue Received as Pass Through					655,884.67
6910 Rentals					65,801.14
6920 Contributions and Donations from Private Sources					32,375.00
6944 Receipts from Other LEAs in Pennsylvania - Education					81,623.13
6949 Other Tuition from Patrons					88,887.49
6991 Refunds of a Prior Year Expenditure					124,956.09
6992 Energy Efficiency Revenues and Incentives					12,852.21
6999 Other Revenues Not Specified Above					39,829.82
6000 Total Revenue from Local Sources	\$40,788.79	\$605.53			\$9,086,397.34
7000 Revenue from State Sources					
7111 Basic Education Funding-Formula					16,416,437.78
7160 Tuition for Orphans Subsidy					9,705.89
7220 Vocational Education					241,507.10
7271 Special Education funds for School-Aged Pupils					2,210,517.33
7311 Pupil Transportation Subsidy					847,364.95
7312 Nonpublic and Charter School Pupil Transportation Subsidy					103,180.00
7320 Rental and Sinking Fund Payments / Building Reimbursement Subsidy					70,816.72

LEA : 116496503 Shamokin Area SD

Printed 12/5/2024 11:18:23 AM

	<u>General Fund (10)</u>	<u>Student Sponsored Activity Fund (21)</u>	<u>Public Purpose Trust (27)</u>	<u>Other Compt Approved (28)</u>	<u>Athletic / Activity (29)</u>	<u>Capital Reserve (690, 1850) (31)</u>
7000 Revenue from State Sources						
7330 Health Services (Medical, Dental, Nurse, Act 25)	46,792.34					
7340 State Property Tax Reduction Allocation	443,267.55					
7362 School Mental Health & Safety and Security Grants	94,657.07					
7369 Other Safe School Grants	50,000.00					
7505 Ready to Learn Block Grant	514,641.00					
7599 Other State Revenue Not Listed Elsewhere in the 7000 Series	5,267.69					
7810 State Share of Social Security and Medicare Taxes	745,749.69					
7820 State Share of Retirement Contributions	3,644,908.26					
7000 Total Revenue from State Sources	\$25,444,813.37					
8000 Revenue from Federal Sources						
8514 Title I - Improving the Academic Achievement of the Disadvantaged	1,058,073.68					
8515 Title II - Preparing, Training, and Recruiting High Quality Teachers and Principals	127,966.22					
8517 Title IV - 21st Century Schools	142,232.04					
8519 Title V - Flexibility and Accountability	32,590.62					
8690 Other Restricted Federal Grants-in-Aid Through the Commonwealth of PA	1,392.50					
8733 ARRA - Qualified Zone Academy Bonds (QZAB)	98,550.03					
8743 ESSER II - Elementary and Secondary School Emergency Relief Fund	45,554.92					
8744 ARP ESSER - Elementary and Secondary School Emergency Relief Fund	1,197,484.60					
8749 Other CARES Act Funding	24,192.23					
8751 ARP ESSER Learning Loss	175,510.50					
8752 ARP ESSER Summer Programs	50,119.97					
8753 ARP ESSER Afterschool Programs	0.98					
8754 ARP ESSER Homeless Children and Youth Funds	16,995.71					
8755 ARP ESSER Emergency Relief for Other Educational Entities	6,876.05					
8810 School-Based Access Medicaid Reimbursement Program (SBAP) Reimbursements (Access)	65,642.66					
8820 Medical Assistance Reimbursement for Administrative Claiming (Quarterly) Program	22,018.01					
8000 Total Revenue from Federal Sources	\$3,065,200.72					
9000 Other Financing Sources						
9290 Other Extended-Term Financing Proceeds	50,001.00					
9310 General Fund Transfers						
9330 Capital Projects Fund Transfers	24,169.68					

LEA : 116496503 Shamokin Area SD

Printed 12/5/2024 11:18:23 AM

	<u>Capital Reserve</u> <u>(1431) (32)</u>	<u>Other Capital</u> <u>Projects Fund (39)</u>	<u>Debt Service (40)</u>	<u>Permanent (90)</u>	<u>Total</u>
7000 Revenue from State Sources					
7330 Health Services (Medical, Dental, Nurse, Act 25)					46,792.34
7340 State Property Tax Reduction Allocation					443,267.55
7362 School Mental Health & Safety and Security Grants					94,657.07
7369 Other Safe School Grants					50,000.00
7505 Ready to Learn Block Grant					514,641.00
7599 Other State Revenue Not Listed Elsewhere in the 7000 Series					5,267.69
7810 State Share of Social Security and Medicare Taxes					745,749.69
7820 State Share of Retirement Contributions					3,644,908.26
7000 Total Revenue from State Sources					\$25,444,813.37
8000 Revenue from Federal Sources					
8514 Title I - Improving the Academic Achievement of the Disadvantaged					1,058,073.68
8515 Title II - Preparing, Training, and Recruiting High Quality Teachers and Principals					127,966.22
8517 Title IV - 21st Century Schools					142,232.04
8519 Title V - Flexibility and Accountability					32,590.62
8690 Other Restricted Federal Grants-in-Aid Through the Commonwealth of PA					1,392.50
8733 ARRA - Qualified Zone Academy Bonds (QZAB)					98,550.03
8743 ESSER II - Elementary and Secondary School Emergency Relief Fund					45,554.92
8744 ARP ESSER - Elementary and Secondary School Emergency Relief Fund					1,197,484.60
8749 Other CARES Act Funding					24,192.23
8751 ARP ESSER Learning Loss					175,510.50
8752 ARP ESSER Summer Programs					50,119.97
8753 ARP ESSER Afterschool Programs					0.98
8754 ARP ESSER Homeless Children and Youth Funds					16,995.71
8755 ARP ESSER Emergency Relief for Other Educational Entities					6,876.05
8810 School-Based Access Medicaid Reimbursement Program (SBAP) Reimbursements (Access)					65,642.66
8820 Medical Assistance Reimbursement for Administrative Claiming (Quarterly) Program					22,018.01
8000 Total Revenue from Federal Sources					\$3,065,200.72
9000 Other Financing Sources					
9290 Other Extended-Term Financing Proceeds					50,001.00
9310 General Fund Transfers	254,359.31				254,359.31
9330 Capital Projects Fund Transfers					24,169.68

LEA : 116496503 Shamokin Area SD

Printed 12/5/2024 11:18:23 AM

	<u>General Fund (10)</u>	<u>Student Sponsored Activity Fund (21)</u>	<u>Public Purpose Trust (27)</u>	<u>Other Compt Approved (28)</u>	<u>Athletic / Activity (29)</u>	<u>Capital Reserve (690, 1850) (31)</u>
9000 Other Financing Sources						
9990 Insurance Recoveries	3,187.94					
9000 Total Other Financing Sources	\$77,358.62					
Total From All Sources	\$37,323,643.15	\$308,732.58				

LEA : 116496503 Shamokin Area SD

Printed 12/5/2024 11:18:23 AM

	<u>Capital Reserve</u> <u>(1431) (32)</u>	<u>Other Capital</u> <u>Projects Fund (39)</u>	<u>Debt Service (40)</u>	<u>Permanent (90)</u>	<u>Total</u>
9000 Other Financing Sources					
9990 Insurance Recoveries					3,187.94
9000 Total Other Financing Sources	\$254,359.31				\$331,717.93
Total From All Sources	\$295,148.10	\$605.53			\$37,928,129.36

LEA : 116496503 Shamokin Area SD

Printed 12/5/2024 11:18:25 AM

	<u>General Fund (10)</u>	<u>Student Sponsored Activity Fund (21)</u>	<u>Public Purpose Trust (27)</u>	<u>Other Compt Approved (28)</u>	<u>Athletic / Activity (29)</u>	<u>Capital Reserve (690. 1850) (31)</u>
Revenue from Local Sources	8,736,270.44	308,732.58				
Revenue from State Sources	25,444,813.37					
Revenue from Federal Sources	3,065,200.72					
Other Financing Sources	77,358.62					
Total From All Sources	\$37,323,643.15	\$308,732.58				

LEA : 116496503 Shamokin Area SD

Printed 12/5/2024 11:18:25 AM

	<u>Capital Reserve (1431)</u> <u>(32)</u>	<u>Other Capital Projects</u> <u>Fund (39)</u>	<u>Debt Service (40)</u>	<u>Permanent (90)</u>	<u>Total</u>
Revenue from Local Sources	40,788.79	605.53			9,086,397.34
Revenue from State Sources					25,444,813.37
Revenue from Federal Sources					3,065,200.72
Other Financing Sources	254,359.31				331,717.93
Total From All Sources	\$295,148.10	\$605.53			\$37,928,129.36

LEA : 116496503 Shamokin Area SD

Printed 12/5/2024 11:18:28 AM

General Fund (10)

1000 Instruction		Total
100 <u>Personnel Services – Salaries</u>		
100 Personnel Services – Salaries		10,191,097.92
Total Personnel Services – Salaries		\$10,191,097.92
200 <u>Personnel Services – Employee Benefits</u>		
210 Group Insurance – Contracted Provider		3,079,641.97
220 Social Security Contributions		808,120.78
230 PSERS Retirement Contributions		3,446,317.19
250 Unemployment Compensation		2,763.11
260 Workers' Compensation		92,142.47
270 Group Insurance – Self-Insurance		4,037.92
292 Health Savings Accounts		136,663.00
Total Personnel Services – Employee Benefits		\$7,569,686.44
300 <u>Purchased Professional and Technical Services</u>		
322 Professional Educational Services – Ius		930,893.11
323 Professional Educational Services – Other Educational Agencies		109,280.00
329 Professional Educational Services – Other		39,725.00
330 Other Professional Services		468,244.01
360 Employee Training and Development Services		2,784.36
Total Purchased Professional and Technical Services		\$1,550,926.48
400 <u>Purchased Property Services</u>		
410 Cleaning Services		6,900.00
430 Repairs and Maintenance Services		5,697.75
440 Rentals		11,580.20
Total Purchased Property Services		\$24,177.95
500 <u>Other Purchased Services</u>		
510 Student Transportation Services		23,090.69
520 Insurance – General		3,029.20
530 Communications		1,102.67
561 Tuition To Other School Districts Within the State		104,821.03
562 Tuition To Pennsylvania Charter Schools		3,239,028.00
564 Tuition To Career and Technology Centers		657,945.00
567 Tuition To Approved Private Schools (APS) and PA Chartered Schools for the Deaf and Blind		59,821.26
568 Tuition To Private Residential Rehabilitative Institutions (PRRI) [In-State] and Detention Centers		673,292.91
569 Tuition – Other		549,349.00
580 Travel		506.27
594 IU Payment By Withholding for Institutionalized Children's Programs – Special Classes		936.21
Total Other Purchased Services		\$5,312,922.24
600 <u>Supplies</u>		
610 General Supplies		299,385.98
630 Food		8,951.89
640 Books and Periodicals		245,581.40
650 Supplies & Fees – Technology Related		2,075.20
Total Supplies		\$555,994.47

LEA : 116496503 Shamokin Area SD

Printed 12/5/2024 11:18:28 AM

General Fund (10)	
1000 Instruction	<u>Total</u>
700 <u>Property</u>	
752 Capital Equipment – Original and Additional	8,086.77
756 Capitalized Technology Equipment – Original	8,391.88
762 Capitalized Equipment - Replacement	5,290.07
Total Property	\$21,768.72
800 <u>Other Objects</u>	
810 Dues and Fees	2,239.33
Total Other Objects	\$2,239.33
Total 1000 Instruction	\$25,228,813.55

LEA : 116496503 Shamokin Area SD

Printed 12/5/2024 11:18:28 AM

General Fund (10)

1100 Regular Programs – Elementary / Secondary

	Elementary	Secondary	Federal	Total
100 <u>Personnel Services – Salaries</u>				
100 Personnel Services – Salaries	2,945,623.96	3,018,196.83	1,361,716.81	7,325,537.60
Total Personnel Services – Salaries	\$2,945,623.96	\$3,018,196.83	\$1,361,716.81	\$7,325,537.60
200 <u>Personnel Services – Employee Benefits</u>				
210 Group Insurance – Contracted Provider	974,471.75	983,770.23	281,211.99	2,239,453.97
220 Social Security Contributions	289,055.29	297,732.30	7,403.39	594,190.98
230 PSERS Retirement Contributions	1,322,796.60	1,134,530.90	17,184.63	2,474,512.13
250 Unemployment Compensation	693.90	693.90		1,387.80
260 Workers' Compensation	27,037.56	27,615.51	11,765.97	66,419.04
270 Group Insurance – Self-Insurance	1,210.00	2,827.92		4,037.92
292 Health Savings Accounts	44,343.00	46,480.00	10,260.00	101,083.00
Total Personnel Services – Employee Benefits	\$2,659,608.10	\$2,493,650.76	\$327,825.98	\$5,481,084.84
300 <u>Purchased Professional and Technical Services</u>				
323 Professional Educational Services – Other Educational Agencies			109,280.00	109,280.00
329 Professional Educational Services – Other		875.00	38,850.00	39,725.00
330 Other Professional Services			27,554.00	27,554.00
Total Purchased Professional and Technical Services		\$875.00	\$175,684.00	\$176,559.00
400 <u>Purchased Property Services</u>				
410 Cleaning Services		900.00		900.00
430 Repairs and Maintenance Services	132.50	3,352.75	2,212.50	5,697.75
440 Rentals	8,434.01	1,473.67		9,907.68
Total Purchased Property Services	\$8,566.51	\$5,726.42	\$2,212.50	\$16,505.43
500 <u>Other Purchased Services</u>				
510 Student Transportation Services	1,749.71	5,010.17	4,651.32	11,411.20
530 Communications			975.00	975.00
561 Tuition To Other School Districts Within the State	5,220.00	40,116.24		45,336.24
562 Tuition To Pennsylvania Charter Schools	580,177.14	759,081.33		1,339,258.47
568 Tuition To Private Residential Rehabilitative Institutions (PRRI) [In-State] and Detention Centers	9,247.64	16,473.51		25,721.15
580 Travel		385.28		385.28
Total Other Purchased Services	\$596,394.49	\$821,066.53	\$5,626.32	\$1,423,087.34
600 <u>Supplies</u>				
610 General Supplies	20,541.15	40,266.35	175,426.94	236,234.44
630 Food	789.14	372.10	541.24	1,702.48
640 Books and Periodicals	27,039.08	14,308.86	192,708.18	234,056.12
650 Supplies & Fees – Technology Related	21,495.53	19,515.23	(71,227.84)	(30,217.08)
Total Supplies	\$69,864.90	\$74,462.54	\$297,448.52	\$441,775.96
700 <u>Property</u>				
752 Capital Equipment – Original and Additional			5,290.07	5,290.07
756 Capitalized Technology Equipment – Original		4,696.92		4,696.92
762 Capitalized Equipment - Replacement			5,290.07	5,290.07
Total Property		\$4,696.92	\$10,580.14	\$15,277.06
800 <u>Other Objects</u>				

LEA : 116496503 Shamokin Area SD

Printed 12/5/2024 11:18:28 AM

General Fund (10)				
1100 Regular Programs – Elementary / Secondary	<u>Elementary</u>	<u>Secondary</u>	<u>Federal</u>	<u>Total</u>
800 <u>Other Objects</u>				
810 Dues and Fees	754.51	741.82		1,496.33
Total Other Objects	\$754.51	\$741.82		\$1,496.33
Total 1100 Regular Programs – Elementary / Secondary	\$6,280,812.47	\$6,419,416.82	\$2,181,094.27	\$14,881,323.56

LEA : 116496503 Shamokin Area SD

Printed 12/5/2024 11:18:28 AM

General Fund (10)

1110 Regular Programs

	Elementary	Secondary	Federal	Total
100 <u>Personnel Services – Salaries</u>				
100 Personnel Services – Salaries	2,945,623.96	3,018,196.83	209,204.22	6,173,025.01
Total Personnel Services – Salaries	\$2,945,623.96	\$3,018,196.83	\$209,204.22	\$6,173,025.01
200 <u>Personnel Services – Employee Benefits</u>				
210 Group Insurance – Contracted Provider	974,471.75	983,770.23	2,601.79	1,960,843.77
220 Social Security Contributions	289,055.29	297,732.30	12,755.61	599,543.20
230 PSERS Retirement Contributions	1,322,796.60	1,134,530.90	40,579.66	2,497,907.16
250 Unemployment Compensation	693.90	693.90		1,387.80
260 Workers' Compensation	27,037.56	27,615.51	1,883.11	56,536.18
270 Group Insurance – Self-Insurance	1,210.00	2,827.92		4,037.92
292 Health Savings Accounts	44,343.00	46,480.00		90,823.00
Total Personnel Services – Employee Benefits	\$2,659,608.10	\$2,493,650.76	\$57,820.17	\$5,211,079.03
300 <u>Purchased Professional and Technical Services</u>				
323 Professional Educational Services – Other Educational Agencies			109,280.00	109,280.00
329 Professional Educational Services – Other		875.00	38,850.00	39,725.00
330 Other Professional Services			27,554.00	27,554.00
Total Purchased Professional and Technical Services		\$875.00	\$175,684.00	\$176,559.00
400 <u>Purchased Property Services</u>				
410 Cleaning Services		900.00		900.00
430 Repairs and Maintenance Services	132.50	3,352.75		3,485.25
440 Rentals	8,434.01	1,473.67		9,907.68
Total Purchased Property Services	\$8,566.51	\$5,726.42		\$14,292.93
500 <u>Other Purchased Services</u>				
510 Student Transportation Services	1,749.71	5,010.17	4,651.32	11,411.20
530 Communications			975.00	975.00
561 Tuition To Other School Districts Within the State	5,220.00	40,116.24		45,336.24
562 Tuition To Pennsylvania Charter Schools	580,177.14	759,081.33		1,339,258.47
568 Tuition To Private Residential Rehabilitative Institutions (PRRI) [In-State] and Detention Centers	9,247.64	16,473.51		25,721.15
580 Travel		385.28		385.28
Total Other Purchased Services	\$596,394.49	\$821,066.53	\$5,626.32	\$1,423,087.34
600 <u>Supplies</u>				
610 General Supplies	20,541.15	40,266.35	56,589.95	117,397.45
630 Food	789.14	372.10	479.48	1,640.72
640 Books and Periodicals	27,039.08	14,308.86	151,707.97	193,055.91
650 Supplies & Fees – Technology Related	21,495.53	19,515.23	14,349.87	55,360.63
Total Supplies	\$69,864.90	\$74,462.54	\$223,127.27	\$367,454.71
700 <u>Property</u>				
752 Capital Equipment – Original and Additional			5,290.07	5,290.07
756 Capitalized Technology Equipment – Original		4,696.92		4,696.92
Total Property		\$4,696.92	\$5,290.07	\$9,986.99
800 <u>Other Objects</u>				

LEA : 116496503 Shamokin Area SD

Printed 12/5/2024 11:18:28 AM

General Fund (10)				
1110 Regular Programs	<u>Elementary</u>	<u>Secondary</u>	<u>Federal</u>	<u>Total</u>
800 <u>Other Objects</u>				
810 Dues and Fees	754.51	741.82		1,496.33
Total Other Objects	\$754.51	\$741.82		\$1,496.33
Total 1110 Regular Programs	\$6,280,812.47	\$6,419,416.82	\$676,752.05	\$13,376,981.34

LEA : 116496503 Shamokin Area SD

Printed 12/5/2024 11:18:28 AM

General Fund (10)

1190 Federally-Funded Regular Programs

	<u>Elementary</u>	<u>Secondary</u>	<u>Federal</u>	<u>Total</u>
100 <u>Personnel Services – Salaries</u>				
100 Personnel Services – Salaries			1,152,512.59	1,152,512.59
Total Personnel Services – Salaries			\$1,152,512.59	\$1,152,512.59
200 <u>Personnel Services – Employee Benefits</u>				
210 Group Insurance – Contracted Provider			278,610.20	278,610.20
220 Social Security Contributions			(5,352.22)	(5,352.22)
230 PSERS Retirement Contributions			(23,395.03)	(23,395.03)
260 Workers' Compensation			9,882.86	9,882.86
292 Health Savings Accounts			10,260.00	10,260.00
Total Personnel Services – Employee Benefits			\$270,005.81	\$270,005.81
400 <u>Purchased Property Services</u>				
430 Repairs and Maintenance Services			2,212.50	2,212.50
Total Purchased Property Services			\$2,212.50	\$2,212.50
600 <u>Supplies</u>				
610 General Supplies			118,836.99	118,836.99
630 Food			61.76	61.76
640 Books and Periodicals			41,000.21	41,000.21
650 Supplies & Fees – Technology Related			(85,577.71)	(85,577.71)
Total Supplies			\$74,321.25	\$74,321.25
700 <u>Property</u>				
762 Capitalized Equipment - Replacement			5,290.07	5,290.07
Total Property			\$5,290.07	\$5,290.07
Total 1190 Federally-Funded Regular Programs			\$1,504,342.22	\$1,504,342.22

LEA : 116496503 Shamokin Area SD

Printed 12/5/2024 11:18:28 AM

General Fund (10)

1200 Special Programs – Elementary / Secondary	Elementary	Secondary	Federal	Total
100 Personnel Services – Salaries				
100 Personnel Services – Salaries	1,167,720.58	804,879.41	377,960.86	2,350,560.85
Total Personnel Services – Salaries	\$1,167,720.58	\$804,879.41	\$377,960.86	\$2,350,560.85
200 Personnel Services – Employee Benefits				
210 Group Insurance – Contracted Provider	331,020.43	280,854.11	89,953.46	701,828.00
220 Social Security Contributions	87,317.58	60,112.85	27,973.23	175,403.66
230 PSERS Retirement Contributions	395,031.89	275,720.61	126,518.90	797,271.40
250 Unemployment Compensation	687.66	687.65		1,375.31
260 Workers' Compensation	10,487.89	7,230.47	3,380.58	21,098.94
292 Health Savings Accounts	14,240.00	10,800.00	4,340.00	29,380.00
Total Personnel Services – Employee Benefits	\$838,785.45	\$635,405.69	\$252,166.17	\$1,726,357.31
300 Purchased Professional and Technical Services				
322 Professional Educational Services – Ius	201,367.57	662,125.06	642.36	864,134.99
330 Other Professional Services	425,952.60	7,409.25		433,361.85
Total Purchased Professional and Technical Services	\$627,320.17	\$669,534.31	\$642.36	\$1,297,496.84
400 Purchased Property Services				
440 Rentals		1,672.52		1,672.52
Total Purchased Property Services		\$1,672.52		\$1,672.52
500 Other Purchased Services				
510 Student Transportation Services	650.48	709.83	9,326.60	10,686.91
530 Communications	55.03	55.03		110.06
561 Tuition To Other School Districts Within the State	4,383.33	47,945.04		52,328.37
562 Tuition To Pennsylvania Charter Schools	836,249.16	1,057,758.25		1,894,007.41
567 Tuition To Approved Private Schools (APS) and PA Chartered Schools for the Deaf and Blind	29,910.63	29,910.63		59,821.26
568 Tuition To Private Residential Rehabilitative Institutions (PRRI) [In-State] and Detention Centers	1,280.00	234,098.48	3,904.20	239,282.68
569 Tuition – Other	72,350.00	471,838.00	5,161.00	549,349.00
594 IU Payment By Withholding for Institutionalized Children’s Programs – Special Classes	468.10	468.11		936.21
Total Other Purchased Services	\$945,346.73	\$1,842,783.37	\$18,391.80	\$2,806,521.90
600 Supplies				
610 General Supplies	3,853.73	2,333.18	10,679.60	16,866.51
640 Books and Periodicals	2,248.75	1,012.00	7,073.53	10,334.28
650 Supplies & Fees – Technology Related	396.36	7,637.13	21,838.97	29,872.46
Total Supplies	\$6,498.84	\$10,982.31	\$39,592.10	\$57,073.25
700 Property				
752 Capital Equipment – Original and Additional			2,796.70	2,796.70
Total Property			\$2,796.70	\$2,796.70
800 Other Objects				
810 Dues and Fees	743.00			743.00
Total Other Objects	\$743.00			\$743.00
Total 1200 Special Programs – Elementary / Secondary	\$3,586,414.77	\$3,965,257.61	\$691,549.99	\$8,243,222.37

LEA : 116496503 Shamokin Area SD

Printed 12/5/2024 11:18:28 AM

General Fund (10)

1210 Life Skills Support	Elementary	Secondary	Federal	Total
100 <u>Personnel Services – Salaries</u>				
100 Personnel Services – Salaries	135,070.49	245,094.72	107,386.42	487,551.63
Total Personnel Services – Salaries	\$135,070.49	\$245,094.72	\$107,386.42	\$487,551.63
200 <u>Personnel Services – Employee Benefits</u>				
210 Group Insurance – Contracted Provider	54,101.82	61,133.02	4,147.40	119,382.24
220 Social Security Contributions	10,133.05	19,417.57	8,034.91	37,585.53
230 PSERS Retirement Contributions	46,058.56	89,148.42	35,365.53	170,572.51
260 Workers' Compensation	1,223.51	2,205.86	945.25	4,374.62
292 Health Savings Accounts	1,860.00	3,230.00		5,090.00
Total Personnel Services – Employee Benefits	\$113,376.94	\$175,134.87	\$48,493.09	\$337,004.90
300 <u>Purchased Professional and Technical Services</u>				
322 Professional Educational Services – lus		313,117.06		313,117.06
Total Purchased Professional and Technical Services		\$313,117.06		\$313,117.06
500 <u>Other Purchased Services</u>				
510 Student Transportation Services	342.46	608.03		950.49
568 Tuition To Private Residential Rehabilitative Institutions (PRRI) [In-State] and Detention Centers			3,904.20	3,904.20
Total Other Purchased Services	\$342.46	\$608.03	\$3,904.20	\$4,854.69
600 <u>Supplies</u>				
610 General Supplies	76.20	671.81	21.89	769.90
640 Books and Periodicals	350.80	253.00		603.80
650 Supplies & Fees – Technology Related			1,234.12	1,234.12
Total Supplies	\$427.00	\$924.81	\$1,256.01	\$2,607.82
Total 1210 Life Skills Support	\$249,216.89	\$734,879.49	\$161,039.72	\$1,145,136.10

LEA : 116496503 Shamokin Area SD

Printed 12/5/2024 11:18:28 AM

General Fund (10)

1220 Sensory Support	Elementary	Secondary	Federal	Total
100 <u>Personnel Services – Salaries</u>				
100 Personnel Services – Salaries	166,646.00			166,646.00
Total Personnel Services – Salaries	\$166,646.00			\$166,646.00
200 <u>Personnel Services – Employee Benefits</u>				
210 Group Insurance – Contracted Provider	52,615.32			52,615.32
220 Social Security Contributions	12,332.65			12,332.65
230 PSERS Retirement Contributions	56,251.64			56,251.64
260 Workers' Compensation	1,499.80			1,499.80
292 Health Savings Accounts	2,480.00			2,480.00
Total Personnel Services – Employee Benefits	\$125,179.41			\$125,179.41
300 <u>Purchased Professional and Technical Services</u>				
322 Professional Educational Services – lus	67.38	2,935.66		3,003.04
330 Other Professional Services	155,925.00	1,448.07		157,373.07
Total Purchased Professional and Technical Services	\$155,992.38	\$4,383.73		\$160,376.11
500 <u>Other Purchased Services</u>				
561 Tuition To Other School Districts Within the State		2,012.00		2,012.00
Total Other Purchased Services		\$2,012.00		\$2,012.00
600 <u>Supplies</u>				
610 General Supplies	1,229.35	96.95		1,326.30
650 Supplies & Fees – Technology Related	396.36			396.36
Total Supplies	\$1,625.71	\$96.95		\$1,722.66
800 <u>Other Objects</u>				
810 Dues and Fees	743.00			743.00
Total Other Objects	\$743.00			\$743.00
Total 1220 Sensory Support	\$450,186.50	\$6,492.68		\$456,679.18

LEA : 116496503 Shamokin Area SD

Printed 12/5/2024 11:18:28 AM

General Fund (10)

1230 Emotional Support

	Elementary	Secondary	Federal	Total
100 <u>Personnel Services – Salaries</u>				
100 Personnel Services – Salaries	372,338.83	170,885.44	193,398.29	736,622.56
Total Personnel Services – Salaries	\$372,338.83	\$170,885.44	\$193,398.29	\$736,622.56
200 <u>Personnel Services – Employee Benefits</u>				
210 Group Insurance – Contracted Provider	89,272.87	58,612.56	56,499.78	204,385.21
220 Social Security Contributions	27,843.21	12,460.40	14,159.52	54,463.13
230 PSERS Retirement Contributions	125,447.56	58,019.41	65,755.44	249,222.41
260 Workers' Compensation	3,324.23	1,538.17	1,740.62	6,603.02
292 Health Savings Accounts	2,180.00	2,480.00	3,100.00	7,760.00
Total Personnel Services – Employee Benefits	\$248,067.87	\$133,110.54	\$141,255.36	\$522,433.77
300 <u>Purchased Professional and Technical Services</u>				
322 Professional Educational Services – lus	194,938.06	265,948.45	642.36	461,528.87
330 Other Professional Services	269,727.60			269,727.60
Total Purchased Professional and Technical Services	\$464,665.66	\$265,948.45	\$642.36	\$731,256.47
500 <u>Other Purchased Services</u>				
510 Student Transportation Services		50.90		50.90
561 Tuition To Other School Districts Within the State	4,383.33	41,414.94		45,798.27
568 Tuition To Private Residential Rehabilitative Institutions (PRRI) [In-State] and Detention Centers	240.00	168,887.65		169,127.65
569 Tuition – Other	72,350.00	199,818.00		272,168.00
Total Other Purchased Services	\$76,973.33	\$410,171.49		\$487,144.82
600 <u>Supplies</u>				
610 General Supplies	1,839.18	243.56	6,983.72	9,066.46
Total Supplies	\$1,839.18	\$243.56	\$6,983.72	\$9,066.46
Total 1230 Emotional Support	\$1,163,884.87	\$980,359.48	\$342,279.73	\$2,486,524.08

LEA : 116496503 Shamokin Area SD

Printed 12/5/2024 11:18:28 AM

General Fund (10)

1240 Academic Support

	Elementary	Secondary	Federal	Total
100 <u>Personnel Services – Salaries</u>				
100 Personnel Services – Salaries	334,020.31	292,929.17	6,838.00	633,787.48
Total Personnel Services – Salaries	\$334,020.31	\$292,929.17	\$6,838.00	\$633,787.48
200 <u>Personnel Services – Employee Benefits</u>				
210 Group Insurance – Contracted Provider	82,768.86	150,501.25		233,270.11
220 Social Security Contributions	24,879.27	21,345.45	523.12	46,747.84
230 PSERS Retirement Contributions	112,994.85	96,432.89	2,324.92	211,752.66
250 Unemployment Compensation	687.66	687.65		1,375.31
260 Workers' Compensation	3,003.62	2,636.35	61.54	5,701.51
292 Health Savings Accounts	6,480.00	4,340.00		10,820.00
Total Personnel Services – Employee Benefits	\$230,814.26	\$275,943.59	\$2,909.58	\$509,667.43
300 <u>Purchased Professional and Technical Services</u>				
322 Professional Educational Services – Ius	301.82	267.45		569.27
330 Other Professional Services	300.00	300.00		600.00
Total Purchased Professional and Technical Services	\$601.82	\$567.45		\$1,169.27
400 <u>Purchased Property Services</u>				
440 Rentals		1,672.52		1,672.52
Total Purchased Property Services		\$1,672.52		\$1,672.52
500 <u>Other Purchased Services</u>				
510 Student Transportation Services			9,326.60	9,326.60
530 Communications	55.03	55.03		110.06
561 Tuition To Other School Districts Within the State		3,008.41		3,008.41
562 Tuition To Pennsylvania Charter Schools	836,249.16	1,057,758.25		1,894,007.41
568 Tuition To Private Residential Rehabilitative Institutions (PRRI) [In-State] and Detention Centers		63,145.51		63,145.51
569 Tuition – Other		198,715.00		198,715.00
Total Other Purchased Services	\$836,304.19	\$1,322,682.20	\$9,326.60	\$2,168,312.99
600 <u>Supplies</u>				
610 General Supplies	709.00	543.32	2,742.05	3,994.37
640 Books and Periodicals	1,897.95	759.00	7,073.53	9,730.48
650 Supplies & Fees – Technology Related		7,637.13	18,136.61	25,773.74
Total Supplies	\$2,606.95	\$8,939.45	\$27,952.19	\$39,498.59
700 <u>Property</u>				
752 Capital Equipment – Original and Additional			2,796.70	2,796.70
Total Property			\$2,796.70	\$2,796.70
Total 1240 Academic Support	\$1,404,347.53	\$1,902,734.38	\$49,823.07	\$3,356,904.98

LEA : 116496503 Shamokin Area SD

Printed 12/5/2024 11:18:28 AM

General Fund (10)

1241 Learning Support – Public	Elementary	Secondary	Federal	Total
100 Personnel Services – Salaries				
100 Personnel Services – Salaries	332,363.07	291,271.94	6,838.00	630,473.01
Total Personnel Services – Salaries	\$332,363.07	\$291,271.94	\$6,838.00	\$630,473.01
200 Personnel Services – Employee Benefits				
210 Group Insurance – Contracted Provider	82,292.11	150,024.51		232,316.62
220 Social Security Contributions	24,752.75	21,218.94	523.12	46,494.81
230 PSERS Retirement Contributions	112,431.43	95,869.46	2,324.92	210,625.81
250 Unemployment Compensation	687.66	687.65		1,375.31
260 Workers' Compensation	2,988.68	2,621.40	61.54	5,671.62
292 Health Savings Accounts	6,480.00	4,340.00		10,820.00
Total Personnel Services – Employee Benefits	\$229,632.63	\$274,761.96	\$2,909.58	\$507,304.17
300 Purchased Professional and Technical Services				
322 Professional Educational Services – Ius	301.82	267.45		569.27
330 Other Professional Services	300.00	300.00		600.00
Total Purchased Professional and Technical Services	\$601.82	\$567.45		\$1,169.27
400 Purchased Property Services				
440 Rentals		1,672.52		1,672.52
Total Purchased Property Services		\$1,672.52		\$1,672.52
500 Other Purchased Services				
510 Student Transportation Services			9,326.60	9,326.60
530 Communications	55.03	55.03		110.06
561 Tuition To Other School Districts Within the State		3,008.41		3,008.41
562 Tuition To Pennsylvania Charter Schools	836,249.16	1,057,758.25		1,894,007.41
568 Tuition To Private Residential Rehabilitative Institutions (PRRI) [In-State] and Detention Centers		63,145.51		63,145.51
569 Tuition – Other		198,715.00		198,715.00
Total Other Purchased Services	\$836,304.19	\$1,322,682.20	\$9,326.60	\$2,168,312.99
600 Supplies				
610 General Supplies	653.94	543.32	2,742.05	3,939.31
640 Books and Periodicals	1,897.95	759.00	7,073.53	9,730.48
650 Supplies & Fees – Technology Related		7,637.13	18,136.61	25,773.74
Total Supplies	\$2,551.89	\$8,939.45	\$27,952.19	\$39,443.53
700 Property				
752 Capital Equipment – Original and Additional			2,796.70	2,796.70
Total Property			\$2,796.70	\$2,796.70
Total 1241 Learning Support – Public	\$1,401,453.60	\$1,899,895.52	\$49,823.07	\$3,351,172.19

LEA : 116496503 Shamokin Area SD

Printed 12/5/2024 11:18:28 AM

General Fund (10)

1243 Gifted Support	<u>Elementary</u>	<u>Secondary</u>	<u>Federal</u>	<u>Total</u>
100 <u>Personnel Services – Salaries</u>				
100 Personnel Services – Salaries	1,657.24	1,657.23		3,314.47
Total Personnel Services – Salaries	\$1,657.24	\$1,657.23		\$3,314.47
200 <u>Personnel Services – Employee Benefits</u>				
210 Group Insurance – Contracted Provider	476.75	476.74		953.49
220 Social Security Contributions	126.52	126.51		253.03
230 PSERS Retirement Contributions	563.42	563.43		1,126.85
260 Workers' Compensation	14.94	14.95		29.89
Total Personnel Services – Employee Benefits	\$1,181.63	\$1,181.63		\$2,363.26
600 <u>Supplies</u>				
610 General Supplies	55.06			55.06
Total Supplies	\$55.06			\$55.06
Total 1243 Gifted Support	\$2,893.93	\$2,838.86		\$5,732.79

LEA : 116496503 Shamokin Area SD

Printed 12/5/2024 11:18:28 AM

General Fund (10)

1260 Physical Support

	<u>Elementary</u>	<u>Secondary</u>	<u>Federal</u>	<u>Total</u>
300 <u>Purchased Professional and Technical Services</u>				
322 Professional Educational Services – lus	6,060.31			6,060.31
Total Purchased Professional and Technical Services	\$6,060.31			\$6,060.31
500 <u>Other Purchased Services</u>				
510 Student Transportation Services	308.02			308.02
Total Other Purchased Services	\$308.02			\$308.02
Total 1260 Physical Support	\$6,368.33			\$6,368.33

LEA : 116496503 Shamokin Area SD

Printed 12/5/2024 11:18:28 AM

General Fund (10)

1270 Multi-Handicapped Support	<u>Elementary</u>	<u>Secondary</u>	<u>Federal</u>	<u>Total</u>
100 <u>Personnel Services – Salaries</u>				
100 Personnel Services – Salaries	159,644.95	95,970.08	70,338.15	325,953.18
Total Personnel Services – Salaries	\$159,644.95	\$95,970.08	\$70,338.15	\$325,953.18
200 <u>Personnel Services – Employee Benefits</u>				
210 Group Insurance – Contracted Provider	52,261.56	10,607.28	29,306.28	92,175.12
220 Social Security Contributions	12,129.40	6,889.43	5,255.68	24,274.51
230 PSERS Retirement Contributions	54,279.28	32,119.89	23,073.01	109,472.18
260 Workers' Compensation	1,436.73	850.09	633.17	2,919.99
292 Health Savings Accounts	1,240.00	750.00	1,240.00	3,230.00
Total Personnel Services – Employee Benefits	\$121,346.97	\$51,216.69	\$59,508.14	\$232,071.80
300 <u>Purchased Professional and Technical Services</u>				
330 Other Professional Services		5,661.18		5,661.18
Total Purchased Professional and Technical Services		\$5,661.18		\$5,661.18
500 <u>Other Purchased Services</u>				
510 Student Transportation Services		50.90		50.90
569 Tuition – Other		73,305.00	5,161.00	78,466.00
Total Other Purchased Services		\$73,355.90	\$5,161.00	\$78,516.90
600 <u>Supplies</u>				
610 General Supplies		777.54	931.94	1,709.48
650 Supplies & Fees – Technology Related			2,468.24	2,468.24
Total Supplies		\$777.54	\$3,400.18	\$4,177.72
Total 1270 Multi-Handicapped Support	\$280,991.92	\$226,981.39	\$138,407.47	\$646,380.78

LEA : 116496503 Shamokin Area SD

Printed 12/5/2024 11:18:28 AM

General Fund (10)

1290 Special Programs - Other Support	<u>Elementary</u>	<u>Secondary</u>	<u>Federal</u>	<u>Total</u>
300 <u>Purchased Professional and Technical Services</u>				
322 Professional Educational Services – Ius		79,856.44		79,856.44
Total Purchased Professional and Technical Services		\$79,856.44		\$79,856.44
500 <u>Other Purchased Services</u>				
561 Tuition To Other School Districts Within the State		1,509.69		1,509.69
567 Tuition To Approved Private Schools (APS) and PA Chartered Schools for the Deaf and Blind	29,910.63	29,910.63		59,821.26
568 Tuition To Private Residential Rehabilitative Institutions (PRRI) [In-State] and Detention Centers	1,040.00	2,065.32		3,105.32
594 IU Payment By Withholding for Institutionalized Children's Programs – Special Classes	468.10	468.11		936.21
Total Other Purchased Services	\$31,418.73	\$33,953.75		\$65,372.48
Total 1290 Special Programs - Other Support	\$31,418.73	\$113,810.19		\$145,228.92

LEA : 116496503 Shamokin Area SD

Printed 12/5/2024 11:18:28 AM

General Fund (10)

1300 Vocational Education

	<u>Elementary</u>	<u>Secondary</u>	<u>Federal</u>	<u>Total</u>
100 <u>Personnel Services – Salaries</u>				
100 Personnel Services – Salaries		244,239.62		244,239.62
Total Personnel Services – Salaries		\$244,239.62		\$244,239.62
200 <u>Personnel Services – Employee Benefits</u>				
210 Group Insurance – Contracted Provider		69,722.52		69,722.52
220 Social Security Contributions		18,237.86		18,237.86
230 PSERS Retirement Contributions		82,701.26		82,701.26
260 Workers' Compensation		2,198.23		2,198.23
292 Health Savings Accounts		3,100.00		3,100.00
Total Personnel Services – Employee Benefits		\$175,959.87		\$175,959.87
500 <u>Other Purchased Services</u>				
530 Communications		17.61		17.61
564 Tuition To Career and Technology Centers		657,945.00		657,945.00
Total Other Purchased Services		\$657,962.61		\$657,962.61
600 <u>Supplies</u>				
610 General Supplies		22,824.45		22,824.45
650 Supplies & Fees – Technology Related		50.49		50.49
Total Supplies		\$22,874.94		\$22,874.94
Total 1300 Vocational Education		\$1,101,037.04		\$1,101,037.04

LEA : 116496503 Shamokin Area SD

Printed 12/5/2024 11:18:28 AM

General Fund (10)

1400 Other Instructional Programs – Elementary / Secondary	<u>Elementary</u>	<u>Secondary</u>	<u>Federal</u>	<u>Total</u>
100 <u>Personnel Services – Salaries</u>				
100 Personnel Services – Salaries	1,063.75	1,063.75	36,377.50	38,505.00
Total Personnel Services – Salaries	\$1,063.75	\$1,063.75	\$36,377.50	\$38,505.00
200 <u>Personnel Services – Employee Benefits</u>				
220 Social Security Contributions	81.38	81.37	2,783.02	2,945.77
230 PSERS Retirement Contributions	361.68	361.67	12,368.35	13,091.70
260 Workers’ Compensation	9.59	9.59	327.49	346.67
Total Personnel Services – Employee Benefits	\$452.65	\$452.63	\$15,478.86	\$16,384.14
300 <u>Purchased Professional and Technical Services</u>				
322 Professional Educational Services – Ius		25,714.88		25,714.88
Total Purchased Professional and Technical Services		\$25,714.88		\$25,714.88
500 <u>Other Purchased Services</u>				
561 Tuition To Other School Districts Within the State	1,723.73	5,432.69		7,156.42
562 Tuition To Pennsylvania Charter Schools		5,762.12		5,762.12
568 Tuition To Private Residential Rehabilitative Institutions (PRRI) [In-State] and Detention Centers	20,877.00	387,412.08		408,289.08
Total Other Purchased Services	\$22,600.73	\$398,606.89		\$421,207.62
Total 1400 Other Instructional Programs – Elementary / Secondary	\$24,117.13	\$425,838.15	\$51,856.36	\$501,811.64

LEA : 116496503 Shamokin Area SD

Printed 12/5/2024 11:18:28 AM

General Fund (10)

1430 Homebound Instruction	<u>Elementary</u>	<u>Secondary</u>	<u>Federal</u>	<u>Total</u>
100 <u>Personnel Services – Salaries</u>				
100 Personnel Services – Salaries	1,063.75	1,063.75		2,127.50
Total Personnel Services – Salaries	\$1,063.75	\$1,063.75		\$2,127.50
200 <u>Personnel Services – Employee Benefits</u>				
220 Social Security Contributions	81.38	81.37		162.75
230 PSERS Retirement Contributions	361.68	361.67		723.35
260 Workers’ Compensation	9.59	9.59		19.18
Total Personnel Services – Employee Benefits	\$452.65	\$452.63		\$905.28
500 <u>Other Purchased Services</u>				
568 Tuition To Private Residential Rehabilitative Institutions (PRRI) [In-State] and Detention Centers	1,950.00			1,950.00
Total Other Purchased Services	\$1,950.00			\$1,950.00
Total 1430 Homebound Instruction	\$3,466.40	\$1,516.38		\$4,982.78

LEA : 116496503 Shamokin Area SD

Printed 12/5/2024 11:18:28 AM

General Fund (10)

1440 Alternative Regular Education Programs	<u>Elementary</u>	<u>Secondary</u>	<u>Federal</u>	<u>Total</u>
300 <u>Purchased Professional and Technical Services</u>				
322 Professional Educational Services – lus		25,714.88		25,714.88
Total Purchased Professional and Technical Services		\$25,714.88		\$25,714.88
500 <u>Other Purchased Services</u>				
561 Tuition To Other School Districts Within the State	1,723.73	5,432.69		7,156.42
562 Tuition To Pennsylvania Charter Schools		5,762.12		5,762.12
568 Tuition To Private Residential Rehabilitative Institutions (PRRI) [In-State] and Detention Centers	18,927.00	387,412.08		406,339.08
Total Other Purchased Services	\$20,650.73	\$398,606.89		\$419,257.62
Total 1440 Alternative Regular Education Programs	\$20,650.73	\$424,321.77		\$444,972.50

LEA : 116496503 Shamokin Area SD

Printed 12/5/2024 11:18:28 AM

General Fund (10)

1441 Adjudicated / Court-Placed Programs	<u>Elementary</u>	<u>Secondary</u>	<u>Federal</u>	<u>Total</u>
300 <u>Purchased Professional and Technical Services</u>				
322 Professional Educational Services – lus		25,714.88		25,714.88
Total Purchased Professional and Technical Services		\$25,714.88		\$25,714.88
500 <u>Other Purchased Services</u>				
561 Tuition To Other School Districts Within the State	1,723.73	5,432.69		7,156.42
562 Tuition To Pennsylvania Charter Schools		5,762.12		5,762.12
568 Tuition To Private Residential Rehabilitative Institutions (PRRI) [In-State] and Detention Centers		170,830.32		170,830.32
Total Other Purchased Services	\$1,723.73	\$182,025.13		\$183,748.86
Total 1441 Adjudicated / Court-Placed Programs	\$1,723.73	\$207,740.01		\$209,463.74

LEA : 116496503 Shamokin Area SD

Printed 12/5/2024 11:18:28 AM

General Fund (10)

1442 Alternative Education Programs	<u>Elementary</u>	<u>Secondary</u>	<u>Federal</u>	<u>Total</u>
500 <u>Other Purchased Services</u>				
568 Tuition To Private Residential Rehabilitative Institutions (PRRI) [In-State] and Detention Centers	18,927.00	216,581.76		235,508.76
Total Other Purchased Services	\$18,927.00	\$216,581.76		\$235,508.76
Total 1442 Alternative Education Programs	\$18,927.00	\$216,581.76		\$235,508.76

LEA : 116496503 Shamokin Area SD

Printed 12/5/2024 11:18:28 AM

General Fund (10)

1450 Instructional Programs Outside the Established School Day	<u>Elementary</u>	<u>Secondary</u>	<u>Federal</u>	<u>Total</u>
100 <u>Personnel Services – Salaries</u>				
100 Personnel Services – Salaries			36,377.50	36,377.50
Total Personnel Services – Salaries			\$36,377.50	\$36,377.50
200 <u>Personnel Services – Employee Benefits</u>				
220 Social Security Contributions			2,783.02	2,783.02
230 PSERS Retirement Contributions			12,368.35	12,368.35
260 Workers’ Compensation			327.49	327.49
Total Personnel Services – Employee Benefits			\$15,478.86	\$15,478.86
Total 1450 Instructional Programs Outside the Established School Day			\$51,856.36	\$51,856.36

LEA : 116496503 Shamokin Area SD

Printed 12/5/2024 11:18:28 AM

General Fund (10)

1500 Nonpublic School Programs

	<u>Elementary</u>	<u>Secondary</u>	<u>Federal</u>	<u>Total</u>
300 <u>Purchased Professional and Technical Services</u>				
322 Professional Educational Services – lus			41,043.24	41,043.24
360 Employee Training and Development Services			2,784.36	2,784.36
Total Purchased Professional and Technical Services			\$43,827.60	\$43,827.60
Total 1500 Nonpublic School Programs			\$43,827.60	\$43,827.60

LEA : 116496503 Shamokin Area SD

Printed 12/5/2024 11:18:28 AM

General Fund (10)				
1800 Pre-Kindergarten	<u>Elementary</u>	<u>Secondary</u>	<u>Federal</u>	<u>Total</u>
100 <u>Personnel Services – Salaries</u>				
100 Personnel Services – Salaries			7,919.41	232,254.85
Total Personnel Services – Salaries			\$7,919.41	\$232,254.85
200 <u>Personnel Services – Employee Benefits</u>				
210 Group Insurance – Contracted Provider				68,637.48
220 Social Security Contributions			605.85	17,342.51
230 PSERS Retirement Contributions			2,692.62	78,740.70
260 Workers' Compensation			71.30	2,079.59
292 Health Savings Accounts				3,100.00
Total Personnel Services – Employee Benefits			\$3,369.77	\$169,900.28
300 <u>Purchased Professional and Technical Services</u>				
330 Other Professional Services				7,328.16
Total Purchased Professional and Technical Services				\$7,328.16
400 <u>Purchased Property Services</u>				
410 Cleaning Services				6,000.00
Total Purchased Property Services				\$6,000.00
500 <u>Other Purchased Services</u>				
510 Student Transportation Services				992.58
520 Insurance – General				3,029.20
580 Travel				120.99
Total Other Purchased Services				\$4,142.77
600 <u>Supplies</u>				
610 General Supplies				23,460.58
630 Food				7,249.41
640 Books and Periodicals				1,191.00
650 Supplies & Fees – Technology Related				2,369.33
Total Supplies				\$34,270.32
700 <u>Property</u>				
756 Capitalized Technology Equipment – Original				3,694.96
Total Property				\$3,694.96
Total 1800 Pre-Kindergarten			\$11,289.18	\$457,591.34

LEA : 116496503 Shamokin Area SD

Printed 12/5/2024 11:18:28 AM

General Fund (10)				
1801 Pre-K Instruction	<u>Elementary</u>	<u>Secondary</u>	<u>Federal</u>	<u>Total</u>
100 <u>Personnel Services – Salaries</u>				
100 Personnel Services – Salaries			7,919.41	230,926.25
Total Personnel Services – Salaries			\$7,919.41	\$230,926.25
200 <u>Personnel Services – Employee Benefits</u>				
210 Group Insurance – Contracted Provider				68,637.48
220 Social Security Contributions			605.85	17,292.33
230 PSERS Retirement Contributions			2,692.62	78,514.84
260 Workers' Compensation			71.30	2,078.39
292 Health Savings Accounts				3,100.00
Total Personnel Services – Employee Benefits			\$3,369.77	\$169,623.04
300 <u>Purchased Professional and Technical Services</u>				
330 Other Professional Services				7,328.16
Total Purchased Professional and Technical Services				\$7,328.16
500 <u>Other Purchased Services</u>				
520 Insurance – General				3,029.20
Total Other Purchased Services				\$3,029.20
600 <u>Supplies</u>				
610 General Supplies				20,537.94
640 Books and Periodicals				1,191.00
650 Supplies & Fees – Technology Related				2,369.33
Total Supplies				\$24,098.27
700 <u>Property</u>				
756 Capitalized Technology Equipment – Original				3,694.96
Total Property				\$3,694.96
Total 1801 Pre-K Instruction			\$11,289.18	\$438,699.88

LEA : 116496503 Shamokin Area SD

Printed 12/5/2024 11:18:28 AM

General Fund (10)

1803 Pre-K Operations and Maintenance	<u>Elementary</u>	<u>Secondary</u>	<u>Federal</u>	<u>Total</u>
100 <u>Personnel Services – Salaries</u>				
100 Personnel Services – Salaries				1,328.60
Total Personnel Services – Salaries				\$1,328.60
200 <u>Personnel Services – Employee Benefits</u>				
220 Social Security Contributions				50.18
230 PSERS Retirement Contributions				225.86
260 Workers’ Compensation				1.20
Total Personnel Services – Employee Benefits				\$277.24
400 <u>Purchased Property Services</u>				
410 Cleaning Services				6,000.00
Total Purchased Property Services				\$6,000.00
600 <u>Supplies</u>				
610 General Supplies				2,922.64
Total Supplies				\$2,922.64
Total 1803 Pre-K Operations and Maintenance				\$10,528.48

LEA : 116496503 Shamokin Area SD

Printed 12/5/2024 11:18:28 AM

General Fund (10)

1804 Pre-K Student Transportation	<u>Elementary</u>	<u>Secondary</u>	<u>Federal</u>	<u>Total</u>
500 <u>Other Purchased Services</u>				
510 Student Transportation Services				992.58
Total Other Purchased Services				\$992.58
Total 1804 Pre-K Student Transportation				\$992.58

LEA : 116496503 Shamokin Area SD

Printed 12/5/2024 11:18:28 AM

General Fund (10)				
1805 Pre-K Food Services	<u>Elementary</u>	<u>Secondary</u>	<u>Federal</u>	<u>Total</u>
600 <u>Supplies</u>				
630 Food				7,249.41
Total Supplies				\$7,249.41
Total 1805 Pre-K Food Services				\$7,249.41

LEA : 116496503 Shamokin Area SD

Printed 12/5/2024 11:18:28 AM

General Fund (10)

1806 Pre-K Professional Development	<u>Elementary</u>	<u>Secondary</u>	<u>Federal</u>	<u>Total</u>
500 <u>Other Purchased Services</u>				
580 Travel				120.99
Total Other Purchased Services				\$120.99
Total 1806 Pre-K Professional Development				\$120.99

LEA : 116496503 Shamokin Area SD

Printed 12/5/2024 11:18:32 AM

General Fund (10)

2000 Support Services

Total

100	<u>Personnel Services – Salaries</u>	
100	Personnel Services – Salaries	3,269,314.04
Total Personnel Services – Salaries		\$3,269,314.04
200	<u>Personnel Services – Employee Benefits</u>	
210	Group Insurance – Contracted Provider	900,528.64
220	Social Security Contributions	246,459.42
230	PSERS Retirement Contributions	1,052,896.20
240	Tuition Reimbursement	35,695.00
250	Unemployment Compensation	2,350.24
260	Workers' Compensation	29,461.49
270	Group Insurance – Self-Insurance	74,747.00
291	Other Retirement Plans	13,128.66
292	Health Savings Accounts	62,575.00
Total Personnel Services – Employee Benefits		\$2,417,841.65
300	<u>Purchased Professional and Technical Services</u>	
310	Official / Administrative Services	31,094.43
322	Professional Educational Services – Ius	15,534.05
329	Professional Educational Services – Other	191,286.89
330	Other Professional Services	248,845.05
360	Employee Training and Development Services	45,128.86
390	Other Purchased Professional and Technical Services	40,395.46
Total Purchased Professional and Technical Services		\$572,284.74
400	<u>Purchased Property Services</u>	
410	Cleaning Services	49,656.02
420	Utility Services	109,891.36
430	Repairs and Maintenance Services	51,383.74
440	Rentals	42,282.26
450	Construction Services	271,950.00
460	Extermination Services	3,030.00
490	Other Purchased Property Services	6,744.00
Total Purchased Property Services		\$534,937.38
500	<u>Other Purchased Services</u>	
511	Student Transportation Services from Another LEA Within the State	2,956.75
513	Contracted Carriers	1,244,376.25
516	Student Transportation Services From the IU	91,407.75
520	Insurance – General	540.00
522	Automotive Liability Insurance	5,716.00
523	General Property and Liability Insurance	122,361.80
529	Other Insurance	40,714.23
530	Communications	20,200.92
549	Other Advertising/Public Relations	11,977.24
580	Travel	1,007.08
Total Other Purchased Services		\$1,541,258.02

LEA : 116496503 Shamokin Area SD

Printed 12/5/2024 11:18:32 AM

General Fund (10)

2000 Support Services

Total

600	<u>Supplies</u>	
610	General Supplies	281,542.93
620	Energy	409,432.60
630	Food	469.18
640	Books and Periodicals	237.15
650	Supplies & Fees – Technology Related	206,422.70
Total Supplies		\$898,104.56
700	<u>Property</u>	
752	Capital Equipment – Original and Additional	10,755.41
756	Capitalized Technology Equipment – Original	22,091.51
Total Property		\$32,846.92
800	<u>Other Objects</u>	
810	Dues and Fees	17,465.10
830	Interest	238.21
890	Miscellaneous Expenditures	85.04
Total Other Objects		\$17,788.35
Total 2000 Support Services		\$9,284,375.66

LEA : 116496503 Shamokin Area SD

Printed 12/5/2024 11:18:32 AM

General Fund (10)

2100 Support Services – Students	Elementary	Secondary	Federal	Total
100 <u>Personnel Services – Salaries</u>				
100 Personnel Services – Salaries	137,955.55	195,755.50		392,613.05
Total Personnel Services – Salaries	\$137,955.55	\$195,755.50		\$392,613.05
200 <u>Personnel Services – Employee Benefits</u>				
210 Group Insurance – Contracted Provider	18,196.58	57,346.35		95,426.21
220 Social Security Contributions	10,533.77	14,580.33		29,505.90
230 PSERS Retirement Contributions	46,564.84	66,557.10		133,148.62
260 Workers' Compensation	1,241.69	1,762.08		3,533.90
292 Health Savings Accounts	1,550.00	2,170.00		4,470.00
Total Personnel Services – Employee Benefits	\$78,086.88	\$142,415.86		\$266,084.63
300 <u>Purchased Professional and Technical Services</u>				
322 Professional Educational Services – Ius	3,362.50			10,534.05
329 Professional Educational Services – Other	3,000.00	3,000.00	155,786.75	161,786.75
330 Other Professional Services				19,087.97
Total Purchased Professional and Technical Services	\$6,362.50	\$3,000.00	\$155,786.75	\$191,408.77
600 <u>Supplies</u>				
610 General Supplies	140.00			140.00
Total Supplies	\$140.00			\$140.00
Total 2100 Support Services – Students	\$222,544.93	\$341,171.36	\$155,786.75	\$850,246.45

LEA : 116496503 Shamokin Area SD

Printed 12/5/2024 11:18:32 AM

General Fund (10)

2120 Guidance Services	<u>Elementary</u>	<u>Secondary</u>	<u>Federal</u>	<u>Total</u>
100 <u>Personnel Services – Salaries</u>				
100 Personnel Services – Salaries	137,955.55	195,755.50		333,711.05
Total Personnel Services – Salaries	\$137,955.55	\$195,755.50		\$333,711.05
200 <u>Personnel Services – Employee Benefits</u>				
210 Group Insurance – Contracted Provider	18,196.58	57,346.35		75,542.93
220 Social Security Contributions	10,533.77	14,580.33		25,114.10
230 PSERS Retirement Contributions	46,564.84	66,557.10		113,121.94
260 Workers' Compensation	1,241.69	1,762.08		3,003.77
292 Health Savings Accounts	1,550.00	2,170.00		3,720.00
Total Personnel Services – Employee Benefits	\$78,086.88	\$142,415.86		\$220,502.74
Total 2120 Guidance Services	\$216,042.43	\$338,171.36		\$554,213.79

LEA : 116496503 Shamokin Area SD

Printed 12/5/2024 11:18:32 AM

General Fund (10)

2140 Psychological Services	<u>Elementary</u>	<u>Secondary</u>	<u>Federal</u>	<u>Total</u>
300 <u>Purchased Professional and Technical Services</u>				
322 Professional Educational Services – Ius	3,362.50			3,362.50
329 Professional Educational Services – Other	3,000.00	3,000.00	155,786.75	161,786.75
Total Purchased Professional and Technical Services	\$6,362.50	\$3,000.00	\$155,786.75	\$165,149.25
600 <u>Supplies</u>				
610 General Supplies	140.00			140.00
Total Supplies	\$140.00			\$140.00
Total 2140 Psychological Services	\$6,502.50	\$3,000.00	\$155,786.75	\$165,289.25

LEA : 116496503 Shamokin Area SD

Printed 12/5/2024 11:18:32 AM

General Fund (10)

2160 Social Work Services

Elementary Secondary Federal Total

100 <u>Personnel Services – Salaries</u>				
100 Personnel Services – Salaries				58,902.00
Total Personnel Services – Salaries				\$58,902.00
200 <u>Personnel Services – Employee Benefits</u>				
210 Group Insurance – Contracted Provider				19,883.28
220 Social Security Contributions				4,391.80
230 PSERS Retirement Contributions				20,026.68
260 Workers' Compensation				530.13
292 Health Savings Accounts				750.00
Total Personnel Services – Employee Benefits				\$45,581.89
300 <u>Purchased Professional and Technical Services</u>				
322 Professional Educational Services – lus				7,171.55
330 Other Professional Services				19,087.97
Total Purchased Professional and Technical Services				\$26,259.52
Total 2160 Social Work Services				\$130,743.41

LEA : 116496503 Shamokin Area SD

Printed 12/5/2024 11:18:32 AM

General Fund (10)

2200 Support Services – Instructional Staff	Elementary	Secondary	Federal	Total
100 Personnel Services – Salaries				
100 Personnel Services – Salaries	100,593.93	100,593.94	7,780.20	208,968.07
Total Personnel Services – Salaries	\$100,593.93	\$100,593.94	\$7,780.20	\$208,968.07
200 Personnel Services – Employee Benefits				
210 Group Insurance – Contracted Provider	28,584.73	28,584.72		57,169.45
220 Social Security Contributions	7,776.22	7,776.22	190.40	15,742.84
230 PSERS Retirement Contributions	34,530.38	34,530.38	1,125.10	70,185.86
240 Tuition Reimbursement	10,169.00	25,526.00		35,695.00
260 Workers' Compensation	905.43	905.43	69.99	1,880.85
270 Group Insurance – Self-Insurance	11,934.00	11,934.00		23,868.00
291 Other Retirement Plans	1,003.54	1,003.53		2,007.07
292 Health Savings Accounts	2,870.00	2,870.00		5,740.00
Total Personnel Services – Employee Benefits	\$97,773.30	\$113,130.28	\$1,385.49	\$212,289.07
300 Purchased Professional and Technical Services				
329 Professional Educational Services – Other	14,312.57	15,187.57		29,500.14
360 Employee Training and Development Services	915.00	1,155.00	39,219.86	41,289.86
Total Purchased Professional and Technical Services	\$15,227.57	\$16,342.57	\$39,219.86	\$70,790.00
500 Other Purchased Services				
530 Communications	91.48	91.47		182.95
580 Travel	577.38	429.70		1,007.08
Total Other Purchased Services	\$668.86	\$521.17		\$1,190.03
600 Supplies				
610 General Supplies	138.62	261.09		399.71
630 Food	20.61	20.61		41.22
640 Books and Periodicals		33.15		33.15
650 Supplies & Fees – Technology Related	900.06	900.06	10,000.00	11,800.12
Total Supplies	\$1,059.29	\$1,214.91	\$10,000.00	\$12,274.20
Total 2200 Support Services – Instructional Staff	\$215,322.95	\$231,802.87	\$58,385.55	\$505,511.37

LEA : 116496503 Shamokin Area SD

Printed 12/5/2024 11:18:32 AM

General Fund (10)

2250 School Library Services

	<u>Elementary</u>	<u>Secondary</u>	<u>Federal</u>	<u>Total</u>
600 <u>Supplies</u>				
650 Supplies & Fees – Technology Related	900.06	900.06		1,800.12
Total Supplies	\$900.06	\$900.06		\$1,800.12
Total 2250 School Library Services	\$900.06	\$900.06		\$1,800.12

LEA : 116496503 Shamokin Area SD

Printed 12/5/2024 11:18:32 AM

General Fund (10)

2260 Instruction and Curriculum Development Services	<u>Elementary</u>	<u>Secondary</u>	<u>Federal</u>	<u>Total</u>
100 <u>Personnel Services – Salaries</u>				
100 Personnel Services – Salaries	100,593.93	100,593.94	915.75	202,103.62
Total Personnel Services – Salaries	\$100,593.93	\$100,593.94	\$915.75	\$202,103.62
200 <u>Personnel Services – Employee Benefits</u>				
210 Group Insurance – Contracted Provider	28,584.73	28,584.72		57,169.45
220 Social Security Contributions	7,645.13	7,645.13	70.06	15,360.32
230 PSERS Retirement Contributions	33,946.90	33,946.90	311.36	68,205.16
260 Workers' Compensation	905.43	905.43	8.24	1,819.10
270 Group Insurance – Self-Insurance	11,934.00	11,934.00		23,868.00
291 Other Retirement Plans	1,003.54	1,003.53		2,007.07
292 Health Savings Accounts	2,870.00	2,870.00		5,740.00
Total Personnel Services – Employee Benefits	\$86,889.73	\$86,889.71	\$389.66	\$174,169.10
300 <u>Purchased Professional and Technical Services</u>				
329 Professional Educational Services – Other	14,312.57	14,312.57		28,625.14
Total Purchased Professional and Technical Services	\$14,312.57	\$14,312.57		\$28,625.14
500 <u>Other Purchased Services</u>				
580 Travel	103.32	103.32		206.64
Total Other Purchased Services	\$103.32	\$103.32		\$206.64
600 <u>Supplies</u>				
610 General Supplies	138.62	261.09		399.71
630 Food	20.61	20.61		41.22
640 Books and Periodicals		33.15		33.15
Total Supplies	\$159.23	\$314.85		\$474.08
Total 2260 Instruction and Curriculum Development Services	\$202,058.78	\$202,214.39	\$1,305.41	\$405,578.58

LEA : 116496503 Shamokin Area SD

Printed 12/5/2024 11:18:32 AM

General Fund (10)

2270 Instructional Staff Professional Development Services	<u>Elementary</u>	<u>Secondary</u>	<u>Federal</u>	<u>Total</u>
100 <u>Personnel Services – Salaries</u>				
100 Personnel Services – Salaries			6,864.45	6,864.45
Total Personnel Services – Salaries			\$6,864.45	\$6,864.45
200 <u>Personnel Services – Employee Benefits</u>				
220 Social Security Contributions	131.09	131.09	120.34	382.52
230 PSERS Retirement Contributions	583.48	583.48	813.74	1,980.70
240 Tuition Reimbursement	10,169.00	25,526.00		35,695.00
260 Workers' Compensation			61.75	61.75
Total Personnel Services – Employee Benefits	\$10,883.57	\$26,240.57	\$995.83	\$38,119.97
300 <u>Purchased Professional and Technical Services</u>				
329 Professional Educational Services – Other		875.00		875.00
360 Employee Training and Development Services	915.00	1,155.00	39,219.86	41,289.86
Total Purchased Professional and Technical Services	\$915.00	\$2,030.00	\$39,219.86	\$42,164.86
500 <u>Other Purchased Services</u>				
530 Communications	91.48	91.47		182.95
580 Travel	474.06	326.38		800.44
Total Other Purchased Services	\$565.54	\$417.85		\$983.39
600 <u>Supplies</u>				
650 Supplies & Fees – Technology Related			10,000.00	10,000.00
Total Supplies			\$10,000.00	\$10,000.00
Total 2270 Instructional Staff Professional Development Services	\$12,364.11	\$28,688.42	\$57,080.14	\$98,132.67

LEA : 116496503 Shamokin Area SD

Printed 12/5/2024 11:18:32 AM

General Fund (10)

2300 Support Services – Administration	Elementary	Secondary	Federal	Total
100 <u>Personnel Services – Salaries</u>				
100 Personnel Services – Salaries	239,020.52	291,724.69		797,908.06
Total Personnel Services – Salaries	\$239,020.52	\$291,724.69		\$797,908.06
200 <u>Personnel Services – Employee Benefits</u>				
210 Group Insurance – Contracted Provider	72,629.98	94,433.12		197,627.18
220 Social Security Contributions	17,416.88	21,961.05		59,251.08
230 PSERS Retirement Contributions	78,944.41	94,241.89		242,387.52
260 Workers' Compensation	2,117.57	2,634.98		7,150.02
270 Group Insurance – Self-Insurance				34,836.00
291 Other Retirement Plans	1,225.00	1,050.00		5,231.15
292 Health Savings Accounts	7,500.00	8,500.00		19,000.00
Total Personnel Services – Employee Benefits	\$179,833.84	\$222,821.04		\$565,482.95
300 <u>Purchased Professional and Technical Services</u>				
310 Official / Administrative Services				31,094.43
330 Other Professional Services				108,681.96
390 Other Purchased Professional and Technical Services				39,104.66
Total Purchased Professional and Technical Services				\$178,881.05
400 <u>Purchased Property Services</u>				
440 Rentals				2,100.60
Total Purchased Property Services				\$2,100.60
500 <u>Other Purchased Services</u>				
520 Insurance – General		100.00		540.00
530 Communications		314.85		1,220.03
Total Other Purchased Services		\$414.85		\$1,760.03
600 <u>Supplies</u>				
610 General Supplies	1,559.60	395.98		22,006.33
630 Food				380.00
640 Books and Periodicals				204.00
Total Supplies	\$1,559.60	\$395.98		\$22,590.33
800 <u>Other Objects</u>				
810 Dues and Fees	605.00			10,452.90
Total Other Objects	\$605.00			\$10,452.90
Total 2300 Support Services – Administration	\$421,018.96	\$515,356.56		\$1,579,175.92

LEA : 116496503 Shamokin Area SD

Printed 12/5/2024 11:18:32 AM

General Fund (10)

2310 Board Services	<u>Elementary</u>	<u>Secondary</u>	<u>Federal</u>	<u>Total</u>
500 <u>Other Purchased Services</u>				
520 Insurance – General				440.00
Total Other Purchased Services				\$440.00
600 <u>Supplies</u>				
630 Food				380.00
Total Supplies				\$380.00
800 <u>Other Objects</u>				
810 Dues and Fees				8,401.57
Total Other Objects				\$8,401.57
Total 2310 Board Services				\$9,221.57

LEA : 116496503 Shamokin Area SD

Printed 12/5/2024 11:18:32 AM

General Fund (10)

2320 Board Treasurer Services	<u>Elementary</u>	<u>Secondary</u>	<u>Federal</u>	<u>Total</u>
100 <u>Personnel Services – Salaries</u>				
100 Personnel Services – Salaries				2,700.10
Total Personnel Services – Salaries				\$2,700.10
200 <u>Personnel Services – Employee Benefits</u>				
220 Social Security Contributions				206.70
260 Workers’ Compensation				24.18
Total Personnel Services – Employee Benefits				\$230.88
Total 2320 Board Treasurer Services				\$2,930.98

LEA : 116496503 Shamokin Area SD

Printed 12/5/2024 11:18:32 AM

General Fund (10)				
2330 Tax Assessment and Collection Services	<u>Elementary</u>	<u>Secondary</u>	<u>Federal</u>	<u>Total</u>
100 <u>Personnel Services – Salaries</u>				
100 Personnel Services – Salaries				53,166.56
Total Personnel Services – Salaries				\$53,166.56
200 <u>Personnel Services – Employee Benefits</u>				
220 Social Security Contributions				4,067.26
260 Workers’ Compensation				478.44
Total Personnel Services – Employee Benefits				\$4,545.70
300 <u>Purchased Professional and Technical Services</u>				
310 Official / Administrative Services				31,094.43
330 Other Professional Services				29,880.40
390 Other Purchased Professional and Technical Services				39,104.66
Total Purchased Professional and Technical Services				\$100,079.49
500 <u>Other Purchased Services</u>				
530 Communications				905.18
Total Other Purchased Services				\$905.18
600 <u>Supplies</u>				
610 General Supplies				18,598.33
Total Supplies				\$18,598.33
Total 2330 Tax Assessment and Collection Services				\$177,295.26

LEA : 116496503 Shamokin Area SD

Printed 12/5/2024 11:18:32 AM

General Fund (10)

2350 Legal and Accounting Services	<u>Elementary</u>	<u>Secondary</u>	<u>Federal</u>	<u>Total</u>
300 <u>Purchased Professional and Technical Services</u>				
330 Other Professional Services				78,801.56
Total Purchased Professional and Technical Services				\$78,801.56
Total 2350 Legal and Accounting Services				\$78,801.56

LEA : 116496503 Shamokin Area SD

Printed 12/5/2024 11:18:32 AM

General Fund (10)

2360 Office of the Superintendent / Executive Director Services	<u>Elementary</u>	<u>Secondary</u>	<u>Federal</u>	<u>Total</u>
100 <u>Personnel Services – Salaries</u>				
100 Personnel Services – Salaries				211,296.19
Total Personnel Services – Salaries				\$211,296.19
200 <u>Personnel Services – Employee Benefits</u>				
210 Group Insurance – Contracted Provider				30,564.08
220 Social Security Contributions				15,599.19
230 PSERS Retirement Contributions				69,201.22
260 Workers' Compensation				1,894.85
270 Group Insurance – Self-Insurance				34,836.00
291 Other Retirement Plans				2,956.15
292 Health Savings Accounts				3,000.00
Total Personnel Services – Employee Benefits				\$158,051.49
400 <u>Purchased Property Services</u>				
440 Rentals				2,100.60
Total Purchased Property Services				\$2,100.60
600 <u>Supplies</u>				
610 General Supplies				1,452.42
640 Books and Periodicals				204.00
Total Supplies				\$1,656.42
800 <u>Other Objects</u>				
810 Dues and Fees				1,446.33
Total Other Objects				\$1,446.33
Total 2360 Office of the Superintendent / Executive Director Services				\$374,551.03

LEA : 116496503 Shamokin Area SD

Printed 12/5/2024 11:18:32 AM

General Fund (10)

2380 Office of the Principal Services	Elementary	Secondary	Federal	Total
100 <u>Personnel Services – Salaries</u>				
100 Personnel Services – Salaries	239,020.52	291,724.69		530,745.21
Total Personnel Services – Salaries	\$239,020.52	\$291,724.69		\$530,745.21
200 <u>Personnel Services – Employee Benefits</u>				
210 Group Insurance – Contracted Provider	72,629.98	94,433.12		167,063.10
220 Social Security Contributions	17,416.88	21,961.05		39,377.93
230 PSERS Retirement Contributions	78,944.41	94,241.89		173,186.30
260 Workers' Compensation	2,117.57	2,634.98		4,752.55
291 Other Retirement Plans	1,225.00	1,050.00		2,275.00
292 Health Savings Accounts	7,500.00	8,500.00		16,000.00
Total Personnel Services – Employee Benefits	\$179,833.84	\$222,821.04		\$402,654.88
500 <u>Other Purchased Services</u>				
520 Insurance – General		100.00		100.00
530 Communications		314.85		314.85
Total Other Purchased Services		\$414.85		\$414.85
600 <u>Supplies</u>				
610 General Supplies	1,559.60	395.98		1,955.58
Total Supplies	\$1,559.60	\$395.98		\$1,955.58
800 <u>Other Objects</u>				
810 Dues and Fees	605.00			605.00
Total Other Objects	\$605.00			\$605.00
Total 2380 Office of the Principal Services	\$421,018.96	\$515,356.56		\$936,375.52

LEA : 116496503 Shamokin Area SD

Printed 12/5/2024 11:18:32 AM

General Fund (10)

	<u>Elementary</u>	<u>Secondary</u>	<u>Federal</u>	<u>Total</u>
2400 Support Services – Pupil Health				
100 <u>Personnel Services – Salaries</u>				
100 Personnel Services – Salaries			80,394.46	207,823.99
Total Personnel Services – Salaries			\$80,394.46	\$207,823.99
200 <u>Personnel Services – Employee Benefits</u>				
210 Group Insurance – Contracted Provider			33,562.56	105,722.40
220 Social Security Contributions			5,987.31	15,506.34
230 PSERS Retirement Contributions			27,334.25	70,483.56
250 Unemployment Compensation				2,372.99
260 Workers' Compensation			723.57	1,870.60
270 Group Insurance – Self-Insurance				6,000.00
292 Health Savings Accounts			2,250.00	5,740.00
Total Personnel Services – Employee Benefits			\$69,857.69	\$207,695.89
300 <u>Purchased Professional and Technical Services</u>				
330 Other Professional Services				57,326.97
Total Purchased Professional and Technical Services				\$57,326.97
400 <u>Purchased Property Services</u>				
430 Repairs and Maintenance Services				692.30
Total Purchased Property Services				\$692.30
500 <u>Other Purchased Services</u>				
530 Communications				15.55
Total Other Purchased Services				\$15.55
600 <u>Supplies</u>				
610 General Supplies			11,938.11	19,547.55
Total Supplies			\$11,938.11	\$19,547.55
700 <u>Property</u>				
752 Capital Equipment – Original and Additional				1,599.99
Total Property				\$1,599.99
Total 2400 Support Services – Pupil Health			\$162,190.26	\$494,702.24

LEA : 116496503 Shamokin Area SD

Printed 12/5/2024 11:18:32 AM

General Fund (10)

2420 Medical Services

<u>Elementary</u>	<u>Secondary</u>	<u>Federal</u>	<u>Total</u>
-------------------	------------------	----------------	--------------

300 Purchased Professional and Technical Services

330 Other Professional Services			41,492.97
---------------------------------	--	--	-----------

Total Purchased Professional and Technical Services			\$41,492.97
--	--	--	--------------------

Total 2420 Medical Services			\$41,492.97
------------------------------------	--	--	--------------------

LEA : 116496503 Shamokin Area SD

Printed 12/5/2024 11:18:32 AM

General Fund (10)

2440 Nursing Services

	<u>Elementary</u>	<u>Secondary</u>	<u>Federal</u>	<u>Total</u>
100 <u>Personnel Services – Salaries</u>				
100 Personnel Services – Salaries			80,394.46	207,823.99
Total Personnel Services – Salaries			\$80,394.46	\$207,823.99
200 <u>Personnel Services – Employee Benefits</u>				
210 Group Insurance – Contracted Provider			33,562.56	105,722.40
220 Social Security Contributions			5,987.31	15,506.34
230 PSERS Retirement Contributions			27,334.25	70,483.56
250 Unemployment Compensation				2,372.99
260 Workers' Compensation			723.57	1,870.60
270 Group Insurance – Self-Insurance				6,000.00
292 Health Savings Accounts			2,250.00	5,740.00
Total Personnel Services – Employee Benefits			\$69,857.69	\$207,695.89
400 <u>Purchased Property Services</u>				
430 Repairs and Maintenance Services				381.14
Total Purchased Property Services				\$381.14
500 <u>Other Purchased Services</u>				
530 Communications				15.55
Total Other Purchased Services				\$15.55
600 <u>Supplies</u>				
610 General Supplies			11,938.11	18,042.75
Total Supplies			\$11,938.11	\$18,042.75
Total 2440 Nursing Services			\$162,190.26	\$433,959.32

LEA : 116496503 Shamokin Area SD

Printed 12/5/2024 11:18:32 AM

General Fund (10)

2450 Nonpublic Health Services	<u>Elementary</u>	<u>Secondary</u>	<u>Federal</u>	<u>Total</u>
400 <u>Purchased Property Services</u>				
430 Repairs and Maintenance Services				311.16
Total Purchased Property Services				\$311.16
600 <u>Supplies</u>				
610 General Supplies				1,504.80
Total Supplies				\$1,504.80
Total 2450 Nonpublic Health Services				\$1,815.96

LEA : 116496503 Shamokin Area SD

Printed 12/5/2024 11:18:32 AM

General Fund (10)

2490 Other Health Services

Elementary Secondary Federal Total

300 Purchased Professional and Technical Services

330 Other Professional Services 15,834.00

Total Purchased Professional and Technical Services \$15,834.00

700 Property

752 Capital Equipment – Original and Additional 1,599.99

Total Property \$1,599.99

Total 2490 Other Health Services \$17,433.99

LEA : 116496503 Shamokin Area SD

Printed 12/5/2024 11:18:32 AM

General Fund (10)				
2500 Support Services – Business	<u>Elementary</u>	<u>Secondary</u>	<u>Federal</u>	<u>Total</u>
100 <u>Personnel Services – Salaries</u>				
100 Personnel Services – Salaries			30,271.13	432,599.62
Total Personnel Services – Salaries			\$30,271.13	\$432,599.62
200 <u>Personnel Services – Employee Benefits</u>				
210 Group Insurance – Contracted Provider			14,579.55	120,046.86
220 Social Security Contributions			2,284.13	32,393.80
230 PSERS Retirement Contributions			10,292.18	142,754.16
260 Workers' Compensation			272.42	3,886.53
291 Other Retirement Plans				2,431.95
292 Health Savings Accounts				8,250.00
Total Personnel Services – Employee Benefits			\$27,428.28	\$309,763.30
300 <u>Purchased Professional and Technical Services</u>				
322 Professional Educational Services – Ius				5,000.00
330 Other Professional Services				41,240.00
Total Purchased Professional and Technical Services				\$46,240.00
400 <u>Purchased Property Services</u>				
440 Rentals				29,546.56
Total Purchased Property Services				\$29,546.56
500 <u>Other Purchased Services</u>				
530 Communications				12,553.44
549 Other Advertising/Public Relations				10,985.44
Total Other Purchased Services				\$23,538.88
600 <u>Supplies</u>				
610 General Supplies				1,995.21
630 Food				47.96
650 Supplies & Fees – Technology Related				26,106.00
Total Supplies				\$28,149.17
800 <u>Other Objects</u>				
810 Dues and Fees			1,250.00	6,489.50
830 Interest				238.21
890 Miscellaneous Expenditures				85.04
Total Other Objects			\$1,250.00	\$6,812.75
Total 2500 Support Services – Business			\$58,949.41	\$876,650.28

LEA : 116496503 Shamokin Area SD

Printed 12/5/2024 11:18:32 AM

General Fund (10)

2510 Fiscal Services

	<u>Elementary</u>	<u>Secondary</u>	<u>Federal</u>	<u>Total</u>
100 <u>Personnel Services – Salaries</u>				
100 Personnel Services – Salaries			30,271.13	404,817.54
Total Personnel Services – Salaries			\$30,271.13	\$404,817.54
200 <u>Personnel Services – Employee Benefits</u>				
210 Group Insurance – Contracted Provider			14,579.55	108,569.22
220 Social Security Contributions			2,284.13	30,292.96
230 PSERS Retirement Contributions			10,292.18	133,308.30
260 Workers' Compensation			272.42	3,636.47
291 Other Retirement Plans				2,431.95
292 Health Savings Accounts				6,750.00
Total Personnel Services – Employee Benefits			\$27,428.28	\$284,988.90
300 <u>Purchased Professional and Technical Services</u>				
330 Other Professional Services				41,240.00
Total Purchased Professional and Technical Services				\$41,240.00
500 <u>Other Purchased Services</u>				
530 Communications				2,005.41
Total Other Purchased Services				\$2,005.41
600 <u>Supplies</u>				
610 General Supplies				365.23
630 Food				47.96
650 Supplies & Fees – Technology Related				26,106.00
Total Supplies				\$26,519.19
800 <u>Other Objects</u>				
810 Dues and Fees			1,250.00	6,489.50
830 Interest				238.21
890 Miscellaneous Expenditures				85.04
Total Other Objects			\$1,250.00	\$6,812.75
Total 2510 Fiscal Services			\$58,949.41	\$766,383.79

LEA : 116496503 Shamokin Area SD

Printed 12/5/2024 11:18:32 AM

General Fund (10)				
2511 Supervision of Fiscal Services - Head of Component	<u>Elementary</u>	<u>Secondary</u>	<u>Federal</u>	<u>Total</u>
100 <u>Personnel Services – Salaries</u>				
100 Personnel Services – Salaries				162,562.07
Total Personnel Services – Salaries				\$162,562.07
200 <u>Personnel Services – Employee Benefits</u>				
210 Group Insurance – Contracted Provider				20,660.55
220 Social Security Contributions				12,363.86
230 PSERS Retirement Contributions				52,989.42
260 Workers' Compensation				1,462.90
291 Other Retirement Plans				2,431.95
292 Health Savings Accounts				3,000.00
Total Personnel Services – Employee Benefits				\$92,908.68
500 <u>Other Purchased Services</u>				
530 Communications				558.64
Total Other Purchased Services				\$558.64
600 <u>Supplies</u>				
610 General Supplies				53.47
630 Food				47.96
650 Supplies & Fees – Technology Related				14,927.02
Total Supplies				\$15,028.45
800 <u>Other Objects</u>				
810 Dues and Fees				486.34
Total Other Objects				\$486.34
Total 2511 Supervision of Fiscal Services - Head of Component				\$271,544.18

LEA : 116496503 Shamokin Area SD

Printed 12/5/2024 11:18:32 AM

General Fund (10)

2513 Receiving and Disbursing Funds Services	<u>Elementary</u>	<u>Secondary</u>	<u>Federal</u>	<u>Total</u>
100 <u>Personnel Services – Salaries</u>				
100 Personnel Services – Salaries				101,301.12
Total Personnel Services – Salaries				\$101,301.12
200 <u>Personnel Services – Employee Benefits</u>				
210 Group Insurance – Contracted Provider				21,214.56
220 Social Security Contributions				7,613.79
230 PSERS Retirement Contributions				33,187.41
260 Workers' Compensation				905.00
292 Health Savings Accounts				750.00
Total Personnel Services – Employee Benefits				\$63,670.76
Total 2513 Receiving and Disbursing Funds Services				\$164,971.88

LEA : 116496503 Shamokin Area SD

Printed 12/5/2024 11:18:32 AM

General Fund (10)

2514 Payroll Services

	<u>Elementary</u>	<u>Secondary</u>	<u>Federal</u>	<u>Total</u>
100 <u>Personnel Services – Salaries</u>				
100 Personnel Services – Salaries				62,332.30
Total Personnel Services – Salaries				\$62,332.30
200 <u>Personnel Services – Employee Benefits</u>				
210 Group Insurance – Contracted Provider				22,955.28
220 Social Security Contributions				4,423.43
230 PSERS Retirement Contributions				20,809.77
260 Workers' Compensation				560.98
292 Health Savings Accounts				1,500.00
Total Personnel Services – Employee Benefits				\$50,249.46
600 <u>Supplies</u>				
650 Supplies & Fees – Technology Related				11,178.98
Total Supplies				\$11,178.98
Total 2514 Payroll Services				\$123,760.74

LEA : 116496503 Shamokin Area SD

Printed 12/5/2024 11:18:32 AM

General Fund (10)

2515 Financial Accounting Services	<u>Elementary</u>	<u>Secondary</u>	<u>Federal</u>	<u>Total</u>
100 <u>Personnel Services – Salaries</u>				
100 Personnel Services – Salaries			30,271.13	78,622.05
Total Personnel Services – Salaries			\$30,271.13	\$78,622.05
200 <u>Personnel Services – Employee Benefits</u>				
210 Group Insurance – Contracted Provider			14,579.55	43,738.83
220 Social Security Contributions			2,284.13	5,891.88
230 PSERS Retirement Contributions			10,292.18	26,321.70
260 Workers' Compensation			272.42	707.59
292 Health Savings Accounts				1,500.00
Total Personnel Services – Employee Benefits			\$27,428.28	\$78,160.00
Total 2515 Financial Accounting Services			\$57,699.41	\$156,782.05

LEA : 116496503 Shamokin Area SD

Printed 12/5/2024 11:18:32 AM

General Fund (10)

2516 Internal Auditing Services

<u>Elementary</u>	<u>Secondary</u>	<u>Federal</u>	<u>Total</u>
-------------------	------------------	----------------	--------------

300 Purchased Professional and Technical Services

330 Other Professional Services			20,700.00
---------------------------------	--	--	-----------

Total Purchased Professional and Technical Services			\$20,700.00
--	--	--	--------------------

Total 2516 Internal Auditing Services			\$20,700.00
--	--	--	--------------------

LEA : 116496503 Shamokin Area SD

Printed 12/5/2024 11:18:32 AM

General Fund (10)

2517 Property Accounting Services

<u>Elementary</u>	<u>Secondary</u>	<u>Federal</u>	<u>Total</u>
-------------------	------------------	----------------	--------------

300 Purchased Professional and Technical Services

330 Other Professional Services				1,190.00
---------------------------------	--	--	--	----------

Total Purchased Professional and Technical Services				\$1,190.00
--	--	--	--	-------------------

Total 2517 Property Accounting Services				\$1,190.00
--	--	--	--	-------------------

LEA : 116496503 Shamokin Area SD

Printed 12/5/2024 11:18:32 AM

General Fund (10)				
2519 Other Fiscal Services	<u>Elementary</u>	<u>Secondary</u>	<u>Federal</u>	<u>Total</u>
300 <u>Purchased Professional and Technical Services</u>				
330 Other Professional Services				19,350.00
Total Purchased Professional and Technical Services				\$19,350.00
500 <u>Other Purchased Services</u>				
530 Communications				1,446.77
Total Other Purchased Services				\$1,446.77
600 <u>Supplies</u>				
610 General Supplies				311.76
Total Supplies				\$311.76
800 <u>Other Objects</u>				
810 Dues and Fees			1,250.00	6,003.16
830 Interest				238.21
890 Miscellaneous Expenditures				85.04
Total Other Objects			\$1,250.00	\$6,326.41
Total 2519 Other Fiscal Services			\$1,250.00	\$27,434.94

LEA : 116496503 Shamokin Area SD

Printed 12/5/2024 11:18:32 AM

General Fund (10)

2520 Purchasing Services	<u>Elementary</u>	<u>Secondary</u>	<u>Federal</u>	<u>Total</u>
400 <u>Purchased Property Services</u>				
440 Rentals				3,615.96
Total Purchased Property Services				\$3,615.96
500 <u>Other Purchased Services</u>				
530 Communications				10,548.03
Total Other Purchased Services				\$10,548.03
600 <u>Supplies</u>				
610 General Supplies				1,629.98
Total Supplies				\$1,629.98
Total 2520 Purchasing Services				\$15,793.97

LEA : 116496503 Shamokin Area SD

Printed 12/5/2024 11:18:32 AM

General Fund (10)

2530 Warehousing and Distributing Services	<u>Elementary</u>	<u>Secondary</u>	<u>Federal</u>	<u>Total</u>
100 <u>Personnel Services – Salaries</u>				
100 Personnel Services – Salaries				27,782.08
Total Personnel Services – Salaries				\$27,782.08
200 <u>Personnel Services – Employee Benefits</u>				
210 Group Insurance – Contracted Provider				11,477.64
220 Social Security Contributions				2,100.84
230 PSERS Retirement Contributions				9,445.86
260 Workers' Compensation				250.06
292 Health Savings Accounts				1,500.00
Total Personnel Services – Employee Benefits				\$24,774.40
Total 2530 Warehousing and Distributing Services				\$52,556.48

LEA : 116496503 Shamokin Area SD

Printed 12/5/2024 11:18:32 AM

General Fund (10)

2540 Printing, Publishing and Duplicating Services

Elementary

Secondary

Federal

Total

400 Purchased Property Services

440 Rentals				25,930.60
-------------	--	--	--	-----------

Total Purchased Property Services				\$25,930.60
-----------------------------------	--	--	--	-------------

Total 2540 Printing, Publishing and Duplicating Services				\$25,930.60
--	--	--	--	-------------

LEA : 116496503 Shamokin Area SD

Printed 12/5/2024 11:18:32 AM

General Fund (10)

2590 Other Support Services – Business	<u>Elementary</u>	<u>Secondary</u>	<u>Federal</u>	<u>Total</u>
300 <u>Purchased Professional and Technical Services</u>				
322 Professional Educational Services – lus				5,000.00
Total Purchased Professional and Technical Services				\$5,000.00
500 <u>Other Purchased Services</u>				
549 Other Advertising/Public Relations				10,985.44
Total Other Purchased Services				\$10,985.44
Total 2590 Other Support Services – Business				\$15,985.44

LEA : 116496503 Shamokin Area SD

Printed 12/5/2024 11:18:32 AM

General Fund (10)

2600 Operation and Maintenance of Plant Services	Elementary	Secondary	Federal	Total
100 <u>Personnel Services – Salaries</u>				
100 Personnel Services – Salaries				1,034,171.73
Total Personnel Services – Salaries				\$1,034,171.73
200 <u>Personnel Services – Employee Benefits</u>				
210 Group Insurance – Contracted Provider				253,807.70
220 Social Security Contributions				79,492.28
230 PSERS Retirement Contributions				328,323.12
250 Unemployment Compensation				(22.75)
260 Workers' Compensation				9,389.25
270 Group Insurance – Self-Insurance				10,043.00
291 Other Retirement Plans				1,807.05
292 Health Savings Accounts				14,875.00
Total Personnel Services – Employee Benefits				\$697,714.65
300 <u>Purchased Professional and Technical Services</u>				
330 Other Professional Services				22,508.15
Total Purchased Professional and Technical Services				\$22,508.15
400 <u>Purchased Property Services</u>				
410 Cleaning Services				49,656.02
420 Utility Services				109,891.36
430 Repairs and Maintenance Services			6,659.00	50,471.44
440 Rentals				8,631.10
450 Construction Services			205,099.00	271,950.00
460 Extermination Services				3,030.00
490 Other Purchased Property Services				6,744.00
Total Purchased Property Services			\$211,758.00	\$500,373.92
500 <u>Other Purchased Services</u>				
522 Automotive Liability Insurance				5,716.00
523 General Property and Liability Insurance				122,361.80
529 Other Insurance				40,714.23
530 Communications				6,228.95
549 Other Advertising/Public Relations				991.80
Total Other Purchased Services				\$176,012.78
600 <u>Supplies</u>				
610 General Supplies	77,427.58	106,336.72	234.65	183,998.95
620 Energy				409,432.60
650 Supplies & Fees – Technology Related				1,190.00
Total Supplies	\$77,427.58	\$106,336.72	\$234.65	\$594,621.55
700 <u>Property</u>				
752 Capital Equipment – Original and Additional				9,155.42
Total Property				\$9,155.42
800 <u>Other Objects</u>				

LEA : 116496503 Shamokin Area SD

Printed 12/5/2024 11:18:32 AM

General Fund (10)

2600 Operation and Maintenance of Plant Services

Elementary

Secondary

Federal

Total

800 Other Objects

810 Dues and Fees

294.67

Total Other Objects

\$294.67

Total 2600 Operation and Maintenance of Plant Services

\$77,427.58

\$106,336.72

\$211,992.65

\$3,034,852.87

LEA : 116496503 Shamokin Area SD

Printed 12/5/2024 11:18:32 AM

General Fund (10)

2610 Supervision of Operation and Maintenance of Plant Services	<u>Elementary</u>	<u>Secondary</u>	<u>Federal</u>	<u>Total</u>
100 <u>Personnel Services – Salaries</u>				
100 Personnel Services – Salaries				122,113.47
Total Personnel Services – Salaries				\$122,113.47
200 <u>Personnel Services – Employee Benefits</u>				
210 Group Insurance – Contracted Provider				24,954.04
220 Social Security Contributions				9,237.59
230 PSERS Retirement Contributions				27,942.38
260 Workers' Compensation				1,098.95
270 Group Insurance – Self-Insurance				10,043.00
291 Other Retirement Plans				1,807.05
292 Health Savings Accounts				3,000.00
Total Personnel Services – Employee Benefits				\$78,083.01
800 <u>Other Objects</u>				
810 Dues and Fees				133.33
Total Other Objects				\$133.33
Total 2610 Supervision of Operation and Maintenance of Plant Services				\$200,329.81

LEA : 116496503 Shamokin Area SD

Printed 12/5/2024 11:18:32 AM

General Fund (10)

2611 Supervision of Operation and Maintenance of Plant Services – Head of Component	<u>Elementary</u>	<u>Secondary</u>	<u>Federal</u>	<u>Total</u>
100 <u>Personnel Services – Salaries</u>				
100 Personnel Services – Salaries				122,113.47
Total Personnel Services – Salaries				\$122,113.47
200 <u>Personnel Services – Employee Benefits</u>				
210 Group Insurance – Contracted Provider				24,954.04
220 Social Security Contributions				9,237.59
230 PSERS Retirement Contributions				27,942.38
260 Workers' Compensation				1,098.95
270 Group Insurance – Self-Insurance				10,043.00
291 Other Retirement Plans				1,807.05
292 Health Savings Accounts				3,000.00
Total Personnel Services – Employee Benefits				\$78,083.01
800 <u>Other Objects</u>				
810 Dues and Fees				133.33
Total Other Objects				\$133.33
Total 2611 Supervision of Operation and Maintenance of Plant Services – Head of Component				\$200,329.81

LEA : 116496503 Shamokin Area SD

Printed 12/5/2024 11:18:32 AM

General Fund (10)				
2620 Operation of Buildings Services	<u>Elementary</u>	<u>Secondary</u>	<u>Federal</u>	<u>Total</u>
100 <u>Personnel Services – Salaries</u>				
100 Personnel Services – Salaries				760,948.71
Total Personnel Services – Salaries				\$760,948.71
200 <u>Personnel Services – Employee Benefits</u>				
210 Group Insurance – Contracted Provider				211,694.13
220 Social Security Contributions				58,728.44
230 PSERS Retirement Contributions				250,922.70
250 Unemployment Compensation				(180.34)
260 Workers' Compensation				6,930.44
292 Health Savings Accounts				11,250.00
Total Personnel Services – Employee Benefits				\$539,345.37
300 <u>Purchased Professional and Technical Services</u>				
330 Other Professional Services				7,050.00
Total Purchased Professional and Technical Services				\$7,050.00
400 <u>Purchased Property Services</u>				
410 Cleaning Services				42,211.52
420 Utility Services				109,891.36
430 Repairs and Maintenance Services			6,659.00	39,848.94
440 Rentals				452.70
450 Construction Services			205,099.00	205,099.00
460 Extermination Services				3,030.00
490 Other Purchased Property Services				6,744.00
Total Purchased Property Services			\$211,758.00	\$407,277.52
500 <u>Other Purchased Services</u>				
523 General Property and Liability Insurance				122,361.80
529 Other Insurance				40,714.23
530 Communications				6,228.95
549 Other Advertising/Public Relations				991.80
Total Other Purchased Services				\$170,296.78
600 <u>Supplies</u>				
610 General Supplies	55,805.04	87,187.08	234.65	143,226.77
620 Energy				398,140.69
Total Supplies	\$55,805.04	\$87,187.08	\$234.65	\$541,367.46
700 <u>Property</u>				
752 Capital Equipment – Original and Additional				9,155.42
Total Property				\$9,155.42
800 <u>Other Objects</u>				
810 Dues and Fees				161.34
Total Other Objects				\$161.34
Total 2620 Operation of Buildings Services	\$55,805.04	\$87,187.08	\$211,992.65	\$2,435,602.60

LEA : 116496503 Shamokin Area SD

Printed 12/5/2024 11:18:32 AM

General Fund (10)

2630 Care and Upkeep of Grounds Services	<u>Elementary</u>	<u>Secondary</u>	<u>Federal</u>	<u>Total</u>
300 <u>Purchased Professional and Technical Services</u>				
330 Other Professional Services				15,458.15
Total Purchased Professional and Technical Services				\$15,458.15
400 <u>Purchased Property Services</u>				
410 Cleaning Services				7,444.50
430 Repairs and Maintenance Services				2,395.00
440 Rentals				8,178.40
450 Construction Services				66,851.00
Total Purchased Property Services				\$84,868.90
600 <u>Supplies</u>				
610 General Supplies	14,798.28	14,174.43		28,972.71
620 Energy				774.32
Total Supplies	\$14,798.28	\$14,174.43		\$29,747.03
Total 2630 Care and Upkeep of Grounds Services	\$14,798.28	\$14,174.43		\$130,074.08

LEA : 116496503 Shamokin Area SD

Printed 12/5/2024 11:18:32 AM

General Fund (10)

2640 Care and Upkeep of Equipment Services	<u>Elementary</u>	<u>Secondary</u>	<u>Federal</u>	<u>Total</u>
400 <u>Purchased Property Services</u>				
430 Repairs and Maintenance Services				292.00
Total Purchased Property Services				\$292.00
600 <u>Supplies</u>				
610 General Supplies	800.50	800.51		1,601.01
Total Supplies	\$800.50	\$800.51		\$1,601.01
Total 2640 Care and Upkeep of Equipment Services	\$800.50	\$800.51		\$1,893.01

LEA : 116496503 Shamokin Area SD

Printed 12/5/2024 11:18:32 AM

General Fund (10)

2650 Vehicle Operation and Maintenance Services (Other Than Student Transportation Vehicles)	<u>Elementary</u>	<u>Secondary</u>	<u>Federal</u>	<u>Total</u>
400 <u>Purchased Property Services</u>				
430 Repairs and Maintenance Services				7,935.50
Total Purchased Property Services				\$7,935.50
500 <u>Other Purchased Services</u>				
522 Automotive Liability Insurance				5,716.00
Total Other Purchased Services				\$5,716.00
600 <u>Supplies</u>				
610 General Supplies	3,642.06	3,642.05		7,284.11
620 Energy				10,517.59
Total Supplies	\$3,642.06	\$3,642.05		\$17,801.70
Total 2650 Vehicle Operation and Maintenance Services (Other Than Student Transportation Vehicles)	\$3,642.06	\$3,642.05		\$31,453.20

LEA : 116496503 Shamokin Area SD

Printed 12/5/2024 11:18:32 AM

General Fund (10)

2660 Safety and Security Services	<u>Elementary</u>	<u>Secondary</u>	<u>Federal</u>	<u>Total</u>
100 <u>Personnel Services – Salaries</u>				
100 Personnel Services – Salaries				151,109.55
Total Personnel Services – Salaries				\$151,109.55
200 <u>Personnel Services – Employee Benefits</u>				
210 Group Insurance – Contracted Provider				17,159.53
220 Social Security Contributions				11,526.25
230 PSERS Retirement Contributions				49,458.04
250 Unemployment Compensation				157.59
260 Workers' Compensation				1,359.86
292 Health Savings Accounts				625.00
Total Personnel Services – Employee Benefits				\$80,286.27
600 <u>Supplies</u>				
610 General Supplies	2,381.70	532.65		2,914.35
650 Supplies & Fees – Technology Related				1,190.00
Total Supplies	\$2,381.70	\$532.65		\$4,104.35
Total 2660 Safety and Security Services	\$2,381.70	\$532.65		\$235,500.17

LEA : 116496503 Shamokin Area SD

Printed 12/5/2024 11:18:32 AM

General Fund (10)

2700 Student Transportation Services	<u>Elementary</u>	<u>Secondary</u>	<u>Federal</u>	<u>Total</u>
100 <u>Personnel Services – Salaries</u>				
100 Personnel Services – Salaries				9,307.00
Total Personnel Services – Salaries				\$9,307.00
200 <u>Personnel Services – Employee Benefits</u>				
220 Social Security Contributions				711.98
230 PSERS Retirement Contributions				3,164.38
260 Workers’ Compensation				83.76
Total Personnel Services – Employee Benefits				\$3,960.12
300 <u>Purchased Professional and Technical Services</u>				
390 Other Purchased Professional and Technical Services				1,290.80
Total Purchased Professional and Technical Services				\$1,290.80
500 <u>Other Purchased Services</u>				
511 Student Transportation Services from Another LEA Within the State				2,956.75
513 Contracted Carriers				1,244,376.25
516 Student Transportation Services From the IU				91,407.75
Total Other Purchased Services				\$1,338,740.75
800 <u>Other Objects</u>				
810 Dues and Fees				11.70
Total Other Objects				\$11.70
Total 2700 Student Transportation Services				\$1,353,310.37

LEA : 116496503 Shamokin Area SD

Printed 12/5/2024 11:18:32 AM

General Fund (10)

2720 Vehicle Operation Services	<u>Elementary</u>	<u>Secondary</u>	<u>Federal</u>	<u>Total</u>
300 <u>Purchased Professional and Technical Services</u>				
390 Other Purchased Professional and Technical Services				1,290.80
Total Purchased Professional and Technical Services				\$1,290.80
500 <u>Other Purchased Services</u>				
511 Student Transportation Services from Another LEA Within the State				2,956.75
513 Contracted Carriers				1,110,762.95
Total Other Purchased Services				\$1,113,719.70
800 <u>Other Objects</u>				
810 Dues and Fees				11.70
Total Other Objects				\$11.70
Total 2720 Vehicle Operation Services				\$1,115,022.20

LEA : 116496503 Shamokin Area SD

Printed 12/5/2024 11:18:32 AM

General Fund (10)

2730 Monitoring Services

Elementary Secondary Federal Total

100 <u>Personnel Services – Salaries</u>				
100 Personnel Services – Salaries				9,307.00
Total Personnel Services – Salaries				\$9,307.00
200 <u>Personnel Services – Employee Benefits</u>				
220 Social Security Contributions				711.98
230 PSERS Retirement Contributions				3,164.38
260 Workers' Compensation				83.76
Total Personnel Services – Employee Benefits				\$3,960.12
Total 2730 Monitoring Services				\$13,267.12

LEA : 116496503 Shamokin Area SD

Printed 12/5/2024 11:18:32 AM

General Fund (10)

2750 Nonpublic Transportation	<u>Elementary</u>	<u>Secondary</u>	<u>Federal</u>	<u>Total</u>
500 <u>Other Purchased Services</u>				
513 Contracted Carriers				133,613.30
Total Other Purchased Services				\$133,613.30
Total 2750 Nonpublic Transportation				\$133,613.30

LEA : 116496503 Shamokin Area SD

Printed 12/5/2024 11:18:32 AM

General Fund (10)

2790 Other Student Transportation Services	<u>Elementary</u>	<u>Secondary</u>	<u>Federal</u>	<u>Total</u>
500 <u>Other Purchased Services</u>				
516 Student Transportation Services From the IU				91,407.75
Total Other Purchased Services				\$91,407.75
Total 2790 Other Student Transportation Services				\$91,407.75

LEA : 116496503 Shamokin Area SD

Printed 12/5/2024 11:18:32 AM

General Fund (10)

2800 Support Services – Central

	<u>Elementary</u>	<u>Secondary</u>	<u>Federal</u>	<u>Total</u>
100 <u>Personnel Services – Salaries</u>				
100 Personnel Services – Salaries			12,159.68	185,922.52
Total Personnel Services – Salaries			\$12,159.68	\$185,922.52
200 <u>Personnel Services – Employee Benefits</u>				
210 Group Insurance – Contracted Provider			2,271.84	70,728.84
220 Social Security Contributions			6.27	13,855.20
230 PSERS Retirement Contributions			(14.17)	62,448.98
260 Workers' Compensation			109.46	1,666.58
291 Other Retirement Plans				1,651.44
292 Health Savings Accounts				4,500.00
Total Personnel Services – Employee Benefits			\$2,373.40	\$154,851.04
300 <u>Purchased Professional and Technical Services</u>				
360 Employee Training and Development Services			1,549.00	3,839.00
Total Purchased Professional and Technical Services			\$1,549.00	\$3,839.00
400 <u>Purchased Property Services</u>				
430 Repairs and Maintenance Services				220.00
440 Rentals				2,004.00
Total Purchased Property Services				\$2,224.00
600 <u>Supplies</u>				
610 General Supplies				53,455.18
650 Supplies & Fees – Technology Related			8,470.65	167,326.58
Total Supplies			\$8,470.65	\$220,781.76
700 <u>Property</u>				
756 Capitalized Technology Equipment – Original				22,091.51
Total Property				\$22,091.51
800 <u>Other Objects</u>				
810 Dues and Fees			100.00	216.33
Total Other Objects			\$100.00	\$216.33
Total 2800 Support Services – Central			\$24,652.73	\$589,926.16

LEA : 116496503 Shamokin Area SD

Printed 12/5/2024 11:18:32 AM

General Fund (10)

2810 Planning, Research, Development and Evaluation Services	<u>Elementary</u>	<u>Secondary</u>	<u>Federal</u>	<u>Total</u>
100 <u>Personnel Services – Salaries</u>				
100 Personnel Services – Salaries				173,762.84
Total Personnel Services – Salaries				\$173,762.84
200 <u>Personnel Services – Employee Benefits</u>				
210 Group Insurance – Contracted Provider				68,457.00
220 Social Security Contributions				12,932.86
230 PSERS Retirement Contributions				58,314.72
260 Workers' Compensation				1,557.12
291 Other Retirement Plans				1,651.44
292 Health Savings Accounts				4,500.00
Total Personnel Services – Employee Benefits				\$147,413.14
400 <u>Purchased Property Services</u>				
430 Repairs and Maintenance Services				220.00
440 Rentals				2,004.00
Total Purchased Property Services				\$2,224.00
600 <u>Supplies</u>				
610 General Supplies				53,455.18
650 Supplies & Fees – Technology Related			8,470.65	167,326.58
Total Supplies			\$8,470.65	\$220,781.76
700 <u>Property</u>				
756 Capitalized Technology Equipment – Original				22,091.51
Total Property				\$22,091.51
800 <u>Other Objects</u>				
810 Dues and Fees				116.33
Total Other Objects				\$116.33
Total 2810 Planning, Research, Development and Evaluation Services			\$8,470.65	\$566,389.58

LEA : 116496503 Shamokin Area SD

Printed 12/5/2024 11:18:32 AM

General Fund (10)

2830 Staff Services

	<u>Elementary</u>	<u>Secondary</u>	<u>Federal</u>	<u>Total</u>
300 <u>Purchased Professional and Technical Services</u>				
360 Employee Training and Development Services			1,549.00	3,839.00
Total Purchased Professional and Technical Services			\$1,549.00	\$3,839.00
Total 2830 Staff Services			\$1,549.00	\$3,839.00

LEA : 116496503 Shamokin Area SD

Printed 12/5/2024 11:18:32 AM

General Fund (10)

2834 Staff Development Services – Non-Instructional, Certified Staff Only	<u>Elementary</u>	<u>Secondary</u>	<u>Federal</u>	<u>Total</u>
300 <u>Purchased Professional and Technical Services</u>				
360 Employee Training and Development Services			1,549.00	2,942.00
Total Purchased Professional and Technical Services			\$1,549.00	\$2,942.00
Total 2834 Staff Development Services – Non-Instructional, Certified Staff Only			\$1,549.00	\$2,942.00

LEA : 116496503 Shamokin Area SD

Printed 12/5/2024 11:18:32 AM

General Fund (10)

2836 Staff Development Services – Non-Instructional, Non-Certified Staff Only	<u>Elementary</u>	<u>Secondary</u>	<u>Federal</u>	<u>Total</u>
300 <u>Purchased Professional and Technical Services</u>				
360 Employee Training and Development Services				897.00
Total Purchased Professional and Technical Services				\$897.00
Total 2836 Staff Development Services – Non-Instructional, Non-Certified Staff Only				\$897.00

LEA : 116496503 Shamokin Area SD

Printed 12/5/2024 11:18:32 AM

General Fund (10)

2850 State and Federal Agency Liaison Services	<u>Elementary</u>	<u>Secondary</u>	<u>Federal</u>	<u>Total</u>
100 <u>Personnel Services – Salaries</u>				
100 Personnel Services – Salaries			12,159.68	12,159.68
Total Personnel Services – Salaries			\$12,159.68	\$12,159.68
200 <u>Personnel Services – Employee Benefits</u>				
210 Group Insurance – Contracted Provider			2,271.84	2,271.84
220 Social Security Contributions			6.27	922.34
230 PSERS Retirement Contributions			(14.17)	4,134.26
260 Workers' Compensation			109.46	109.46
Total Personnel Services – Employee Benefits			\$2,373.40	\$7,437.90
800 <u>Other Objects</u>				
810 Dues and Fees			100.00	100.00
Total Other Objects			\$100.00	\$100.00
Total 2850 State and Federal Agency Liaison Services			\$14,633.08	\$19,697.58

LEA : 116496503 Shamokin Area SD

Printed 12/5/2024 11:18:41 AM

General Fund (10)	
3000 Operation of Non-Instructional Services	<u>Total</u>
100 <u>Personnel Services – Salaries</u>	
100 Personnel Services – Salaries	349,841.37
Total Personnel Services – Salaries	\$349,841.37
200 <u>Personnel Services – Employee Benefits</u>	
220 Social Security Contributions	26,755.83
230 PSERS Retirement Contributions	43,561.78
250 Unemployment Compensation	430.20
260 Workers' Compensation	3,149.03
270 Group Insurance – Self-Insurance	27,516.00
Total Personnel Services – Employee Benefits	\$101,412.84
300 <u>Purchased Professional and Technical Services</u>	
330 Other Professional Services	58,912.75
390 Other Purchased Professional and Technical Services	37,000.00
Total Purchased Professional and Technical Services	\$95,912.75
400 <u>Purchased Property Services</u>	
410 Cleaning Services	666.00
430 Repairs and Maintenance Services	8,106.81
440 Rentals	5,070.00
Total Purchased Property Services	\$13,842.81
500 <u>Other Purchased Services</u>	
510 Student Transportation Services	62,861.27
520 Insurance – General	12,940.00
530 Communications	110.06
580 Travel	10,719.03
Total Other Purchased Services	\$86,630.36
600 <u>Supplies</u>	
610 General Supplies	69,759.27
630 Food	950.51
640 Books and Periodicals	7,947.05
650 Supplies & Fees – Technology Related	11,400.00
Total Supplies	\$90,056.83
700 <u>Property</u>	
752 Capital Equipment – Original and Additional	1,986.99
Total Property	\$1,986.99
800 <u>Other Objects</u>	
810 Dues and Fees	14,823.00
890 Miscellaneous Expenditures	1,171.76
Total Other Objects	\$15,994.76
Total 3000 Operation of Non-Instructional Services	\$755,678.71

LEA : 116496503 Shamokin Area SD

Printed 12/5/2024 11:18:41 AM

General Fund (10)				
3200 Student Activities	<u>Elementary</u>	<u>Secondary</u>	<u>Federal</u>	<u>Total</u>
100 <u>Personnel Services – Salaries</u>				
100 Personnel Services – Salaries				346,319.37
Total Personnel Services – Salaries				\$346,319.37
200 <u>Personnel Services – Employee Benefits</u>				
220 Social Security Contributions				26,486.40
230 PSERS Retirement Contributions				42,364.30
250 Unemployment Compensation				430.20
260 Workers' Compensation				3,117.34
270 Group Insurance – Self-Insurance				27,516.00
Total Personnel Services – Employee Benefits				\$99,914.24
300 <u>Purchased Professional and Technical Services</u>				
330 Other Professional Services				58,912.75
390 Other Purchased Professional and Technical Services				37,000.00
Total Purchased Professional and Technical Services				\$95,912.75
400 <u>Purchased Property Services</u>				
410 Cleaning Services				666.00
430 Repairs and Maintenance Services				8,106.81
440 Rentals				5,070.00
Total Purchased Property Services				\$13,842.81
500 <u>Other Purchased Services</u>				
510 Student Transportation Services				62,861.27
520 Insurance – General				12,940.00
530 Communications				110.06
580 Travel				10,719.03
Total Other Purchased Services				\$86,630.36
600 <u>Supplies</u>				
610 General Supplies			150.00	66,070.24
630 Food				642.60
650 Supplies & Fees – Technology Related				11,400.00
Total Supplies			\$150.00	\$78,112.84
700 <u>Property</u>				
752 Capital Equipment – Original and Additional				1,986.99
Total Property				\$1,986.99
800 <u>Other Objects</u>				
810 Dues and Fees				14,823.00
890 Miscellaneous Expenditures				1,171.76
Total Other Objects				\$15,994.76
Total 3200 Student Activities			\$150.00	\$738,714.12

LEA : 116496503 Shamokin Area SD

Printed 12/5/2024 11:18:41 AM

General Fund (10)

3300 Community Services

Elementary Secondary Federal Total

100 <u>Personnel Services – Salaries</u>				
100 Personnel Services – Salaries			3,522.00	3,522.00
Total Personnel Services – Salaries			\$3,522.00	\$3,522.00
200 <u>Personnel Services – Employee Benefits</u>				
220 Social Security Contributions			(5.06)	269.43
230 PSERS Retirement Contributions			(45.53)	1,197.48
260 Workers’ Compensation			31.69	31.69
Total Personnel Services – Employee Benefits			(\$18.90)	\$1,498.60
600 <u>Supplies</u>				
610 General Supplies			3,497.03	3,497.03
630 Food			307.91	307.91
640 Books and Periodicals			7,947.05	7,947.05
Total Supplies			\$11,751.99	\$11,751.99
Total 3300 Community Services			\$15,255.09	\$16,772.59

LEA : 116496503 Shamokin Area SD

Printed 12/5/2024 11:18:41 AM

General Fund (10)

3400 Scholarships and Awards

Elementary

Secondary

Federal

Total

600 Supplies

610 General Supplies

192.00

Total Supplies				\$192.00
Total 3400 Scholarships and Awards				\$192.00

LEA : 116496503 Shamokin Area SD

Printed 12/5/2024 11:18:46 AM

General Fund (10)

4000 Facilities Acquisition, Construction and Improvement Services

Total

700 Property

710 Land and Improvements

25,000.00

Total Property

\$25,000.00

Total 4000 Facilities Acquisition, Construction and Improvement Services

\$25,000.00

LEA : 116496503 Shamokin Area SD

Printed 12/5/2024 11:18:46 AM

General Fund (10)

4200 Existing Site Improvement Services	<u>Elementary</u>	<u>Secondary</u>	<u>Federal</u>	<u>Total</u>
700 <u>Property</u>				
710 Land and Improvements				25,000.00
Total Property				\$25,000.00
Total 4200 Existing Site Improvement Services				\$25,000.00

LEA : 116496503 Shamokin Area SD

Printed 12/5/2024 11:18:52 AM

General Fund (10)	
5000 Other Expenditures and Financing Uses	<u>Total</u>
800 <u>Other Objects</u>	
830 Interest	395,249.68
Total Other Objects	\$395,249.68
900 <u>Other Uses of Funds</u>	
910 Redemption of Principal	456,000.00
932 Capital Reserve Fund Transfers Applicable To Fund 32	254,359.31
Total Other Uses of Funds	\$710,359.31
Total 5000 Other Expenditures and Financing Uses	\$1,105,608.99

LEA : 116496503 Shamokin Area SD

Printed 12/5/2024 11:18:52 AM

General Fund (10)

5100 Debt Service / Other Expenditures and Financing Uses	<u>Elementary</u>	<u>Secondary</u>	<u>Federal</u>	<u>Total</u>
800 <u>Other Objects</u>				
830 Interest			205,873.42	395,249.68
Total Other Objects			\$205,873.42	\$395,249.68
900 <u>Other Uses of Funds</u>				
910 Redemption of Principal			226,000.00	456,000.00
Total Other Uses of Funds			\$226,000.00	\$456,000.00
Total 5100 Debt Service / Other Expenditures and Financing Uses			\$431,873.42	\$851,249.68

LEA : 116496503 Shamokin Area SD

Printed 12/5/2024 11:18:52 AM

General Fund (10)

5110 Debt Service	<u>Elementary</u>	<u>Secondary</u>	<u>Federal</u>	<u>Total</u>
800 <u>Other Objects</u>				
830 Interest			205,873.42	395,249.68
Total Other Objects			\$205,873.42	\$395,249.68
900 <u>Other Uses of Funds</u>				
910 Redemption of Principal			226,000.00	456,000.00
Total Other Uses of Funds			\$226,000.00	\$456,000.00
Total 5110 Debt Service			\$431,873.42	\$851,249.68

LEA : 116496503 Shamokin Area SD

Printed 12/5/2024 11:18:52 AM

General Fund (10)

5200 Interfund Transfers – Out	<u>Elementary</u>	<u>Secondary</u>	<u>Federal</u>	<u>Total</u>
900 <u>Other Uses of Funds</u>				
932 Capital Reserve Fund Transfers Applicable To Fund 32				254,359.31
Total Other Uses of Funds				\$254,359.31
Total 5200 Interfund Transfers – Out				\$254,359.31

LEA : 116496503 Shamokin Area SD

Printed 12/5/2024 11:18:52 AM

General Fund (10)

5230 Capital Projects Fund Transfers	<u>Elementary</u>	<u>Secondary</u>	<u>Federal</u>	<u>Total</u>
900 <u>Other Uses of Funds</u>				
932 Capital Reserve Fund Transfers Applicable To Fund 32				254,359.31
Total Other Uses of Funds				\$254,359.31
Total 5230 Capital Projects Fund Transfers				\$254,359.31

LEA : 116496503 Shamokin Area SD

Printed 12/5/2024 11:18:43 AM

Student Sponsored Activity Fund (21)

3000 Operation of Non-Instructional Services

Total

600 Supplies

610 General Supplies

309,507.49

Total Supplies	\$309,507.49
Total 3000 Operation of Non-Instructional Services	\$309,507.49

LEA : 116496503 Shamokin Area SD

Printed 12/5/2024 11:18:43 AM

Student Sponsored Activity Fund (21)

3200 Student Activities	<u>Elementary</u>	<u>Secondary</u>	<u>Federal</u>	<u>Total</u>
600 <u>Supplies</u>				
610 General Supplies				309,507.49
Total Supplies				\$309,507.49
Total 3200 Student Activities				\$309,507.49

LEA : 116496503 Shamokin Area SD

Printed 12/5/2024 11:18:37 AM

Capital Reserve Fund - § 1431 (32)

2000 Support Services

Total

400 Purchased Property Services

420	Utility Services	2,150.00
430	Repairs and Maintenance Services	3,742.88
450	Construction Services	55,298.75

Total Purchased Property Services		\$61,191.63
-----------------------------------	--	-------------

Total 2000 Support Services		\$61,191.63
-----------------------------	--	-------------

LEA : 116496503 Shamokin Area SD

Printed 12/5/2024 11:18:37 AM

Capital Reserve Fund - § 1431 (32)

2600 Operation and Maintenance of Plant Services

Elementary Secondary Federal Total

400 <u>Purchased Property Services</u>				
420 Utility Services				2,150.00
430 Repairs and Maintenance Services				3,742.88
450 Construction Services				55,298.75
Total Purchased Property Services				\$61,191.63
Total 2600 Operation and Maintenance of Plant Services				\$61,191.63

LEA : 116496503 Shamokin Area SD

Printed 12/5/2024 11:18:37 AM

Capital Reserve Fund - § 1431 (32)

2620 Operation of Buildings Services

<u>Elementary</u>	<u>Secondary</u>	<u>Federal</u>	<u>Total</u>
-------------------	------------------	----------------	--------------

400 Purchased Property Services

420 Utility Services				2,150.00
430 Repairs and Maintenance Services				3,742.88
450 Construction Services				55,298.75

Total Purchased Property Services				\$61,191.63
Total 2620 Operation of Buildings Services				\$61,191.63

LEA : 116496503 Shamokin Area SD

Printed 12/5/2024 11:18:49 AM

Capital Reserve Fund - § 1431 (32)

4000 Facilities Acquisition, Construction and Improvement Services

Total

700 <u>Property</u>	
710 Land and Improvements	774,790.31
Total Property	\$774,790.31
Total 4000 Facilities Acquisition, Construction and Improvement Services	\$774,790.31

LEA : 116496503 Shamokin Area SD

Printed 12/5/2024 11:18:49 AM

Capital Reserve Fund - § 1431 (32)

4200 Existing Site Improvement Services	<u>Elementary</u>	<u>Secondary</u>	<u>Federal</u>	<u>Total</u>
700 <u>Property</u>				
710 Land and Improvements				774,790.31
Total Property				\$774,790.31
Total 4200 Existing Site Improvement Services				\$774,790.31

LEA : 116496503 Shamokin Area SD

Printed 12/5/2024 11:18:55 AM

Other Capital Projects Fund (39)

5000 Other Expenditures and Financing Uses

Total

900 Other Uses of Funds

939 Other Fund Transfers

24,169.68

Total Other Uses of Funds

\$24,169.68

Total 5000 Other Expenditures and Financing Uses

\$24,169.68

LEA : 116496503 Shamokin Area SD

Printed 12/5/2024 11:18:55 AM

Other Capital Projects Fund (39)

5200 Interfund Transfers – Out

<u>Elementary</u>	<u>Secondary</u>	<u>Federal</u>	<u>Total</u>
-------------------	------------------	----------------	--------------

900 Other Uses of Funds

939 Other Fund Transfers				24,169.68
--------------------------	--	--	--	-----------

Total Other Uses of Funds				\$24,169.68
----------------------------------	--	--	--	--------------------

Total 5200 Interfund Transfers – Out				\$24,169.68
---	--	--	--	--------------------

LEA : 116496503 Shamokin Area SD

Printed 12/5/2024 11:18:55 AM

Other Capital Projects Fund (39)

5210 General Fund Transfers	<u>Elementary</u>	<u>Secondary</u>	<u>Federal</u>	<u>Total</u>
900 <u>Other Uses of Funds</u>				
939 Other Fund Transfers				24,169.68
Total Other Uses of Funds				\$24,169.68
Total 5210 General Fund Transfers				\$24,169.68

LEA : 116496503 Shamokin Area SD

Printed 12/5/2024 11:18:58 AM

	<u>General Fund(10)</u>	<u>Student Sponsored Activity Fund(21)</u>	<u>Public Purpose Trust(27)</u>	<u>Other Compt Approved (28)</u>	<u>Athletic / Activity(29)</u>
1000 <u>Instruction</u>					
1100 Regular Programs - Elementary / Secondary	14,881,323.56				
1200 Special Programs - Elementary / Secondary	8,243,222.37				
1300 Vocational Education	1,101,037.04				
1400 Other Instructional Programs - Elementary / Secondary	501,811.64				
1500 Nonpublic School Programs	43,827.60				
1800 Pre-Kindergarten	457,591.34				
Total Instruction	\$25,228,813.55				
2000 <u>Support Services</u>					
2100 Support Services - Students	850,246.45				
2200 Support Services - Instructional Staff	505,511.37				
2300 Support Services - Administration	1,579,175.92				
2400 Support Services - Pupil Health	494,702.24				
2500 Support Services - Business	876,650.28				
2600 Operation and Maintenance of Plant Services	3,034,852.87				
2700 Student Transportation Services	1,353,310.37				
2800 Support Services - Central	589,926.16				
Total Support Services	\$9,284,375.66				
3000 <u>Operation of Non-Instructional Services</u>					
3200 Student Activities	738,714.12	309,507.49			
3300 Community Services	16,772.59				
3400 Scholarships and Awards	192.00				
Total Operation of Non-Instructional Services	\$755,678.71	\$309,507.49			
4000 <u>Facilities Acquisition, Construction and Improvement Services</u>					
4200 Existing Site Improvement Services	25,000.00				
Total Facilities Acquisition, Construction and Improvement Services	\$25,000.00				
5000 <u>Other Expenditures and Financing Uses</u>					
5100 Debt Service / Other Expenditures and Financing Uses	851,249.68				
5200 Interfund Transfers - Out	254,359.31				
Total Other Expenditures and Financing Uses	\$1,105,608.99				
TOTAL ACTUAL EXPENDITURES & OTHER FINANCING USES	\$36,399,476.91	\$309,507.49			

LEA : 116496503 Shamokin Area SD

Printed 12/5/2024 11:18:58 AM

	<u>Capital Reserve (690.1850)(31)</u>	<u>Capital Reserve (1431)(32)</u>	<u>Other Capital Projects Fund(39)</u>	<u>Debt Service(40)</u>	<u>Permanent(90)</u>
1000 <u>Instruction</u>					
1100 Regular Programs - Elementary / Secondary					
1200 Special Programs - Elementary / Secondary					
1300 Vocational Education					
1400 Other Instructional Programs - Elementary / Secondary					
1500 Nonpublic School Programs					
1800 Pre-Kindergarten					
Total Instruction					
2000 <u>Support Services</u>					
2100 Support Services - Students					
2200 Support Services - Instructional Staff					
2300 Support Services - Administration					
2400 Support Services - Pupil Health					
2500 Support Services - Business					
2600 Operation and Maintenance of Plant Services				61,191.63	
2700 Student Transportation Services					
2800 Support Services - Central					
Total Support Services				\$61,191.63	
3000 <u>Operation of Non-Instructional Services</u>					
3200 Student Activities					
3300 Community Services					
3400 Scholarships and Awards					
Total Operation of Non-Instructional Services					
4000 <u>Facilities Acquisition, Construction and Improvement Services</u>					
4200 Existing Site Improvement Services				774,790.31	
Total Facilities Acquisition, Construction and Improvement Services				\$774,790.31	
5000 <u>Other Expenditures and Financing Uses</u>					
5100 Debt Service / Other Expenditures and Financing Uses					
5200 Interfund Transfers - Out				24,169.68	
Total Other Expenditures and Financing Uses				\$24,169.68	
TOTAL ACTUAL EXPENDITURES & OTHER FINANCING USES				\$835,981.94	\$24,169.68

LEA : 116496503 Shamokin Area SD

Printed 12/5/2024 11:18:58 AM

	<u>Total</u>
1000 <u>Instruction</u>	
1100 Regular Programs - Elementary / Secondary	14,881,323.56
1200 Special Programs - Elementary / Secondary	8,243,222.37
1300 Vocational Education	1,101,037.04
1400 Other Instructional Programs - Elementary / Secondary	501,811.64
1500 Nonpublic School Programs	43,827.60
1800 Pre-Kindergarten	457,591.34
Total Instruction	\$25,228,813.55
2000 <u>Support Services</u>	
2100 Support Services - Students	850,246.45
2200 Support Services - Instructional Staff	505,511.37
2300 Support Services - Administration	1,579,175.92
2400 Support Services - Pupil Health	494,702.24
2500 Support Services - Business	876,650.28
2600 Operation and Maintenance of Plant Services	3,096,044.50
2700 Student Transportation Services	1,353,310.37
2800 Support Services - Central	589,926.16
Total Support Services	\$9,345,567.29
3000 <u>Operation of Non-Instructional Services</u>	
3200 Student Activities	1,048,221.61
3300 Community Services	16,772.59
3400 Scholarships and Awards	192.00
Total Operation of Non-Instructional Services	\$1,065,186.20
4000 <u>Facilities Acquisition, Construction and Improvement Services</u>	
4200 Existing Site Improvement Services	799,790.31
Total Facilities Acquisition, Construction and Improvement Services	\$799,790.31
5000 <u>Other Expenditures and Financing Uses</u>	
5100 Debt Service / Other Expenditures and Financing Uses	851,249.68
5200 Interfund Transfers - Out	278,528.99
Total Other Expenditures and Financing Uses	\$1,129,778.67
TOTAL ACTUAL EXPENDITURES & OTHER FINANCING USES	\$37,569,136.02

LEA : 116496503 Shamokin Area SD

Printed 12/5/2024 11:19:08 AM

PSERS Salary Data (Salary Data should relate to the General Fund only)

Amount	Description	Amount
	Total Salary Base for salaries subject to PSERS withholding	13,323,943.24
	Total Federally Funded salaries subject to PSERS withholding	1,569,981.98

Title I Expenditure Data

Amount	Description	Amount
	Expenditures Funded with Current Title I Funds	720,942.08
	Expenditures Funded with Carry over Title I Funds	337,131.59
Total	Title I Expenditure Data	\$1,058,073.67

Title IV Revenue Data

Amount	Description	Amount
	Revenue from Title IV-A-1: Student Support and Academic Enrichment Grants	92,561.00
	Revenue from Title IV-B: 21st Century Community Learning Centers	49,671.04

Title V Revenue Data

Amount	Description	Amount
	Revenue from Title V-B-2: Rural and Low-Income School Programs	32,590.62

LEA : 116496503 Shamokin Area SD

1 .	<u>Current Special Education Expenditures within Function 1000</u> See list of exclusions in the note below.	5,450,219.61
2 .	<u>Current Special Education Expenditures within Function 2000</u> See list of exclusions in the note below.	435,082.74
2A.	<u>Current Special Education Expenditures within Sub-Function 2100</u> This data should also be included in line 2 above. See list of exclusions in the note below.	266,410.64
2B.	<u>Current Special Education Expenditures within Sub-Function 2200</u> This data should also be included in line 2 above. See list of exclusions in the note below.	31,432.69
2C.	<u>Current Special Education Expenditures within Sub-Function 2700</u> This data should also be included in line 2 above. See list of exclusions in the note below.	48,586.61
3.	<u>Current Special Education Expenditures within Sub-Function 3100</u> See list of exclusions in the note below.	
4.	<u>Current Special Education Expenditures within Sub-Function 3200</u> See list of exclusions in the note below.	

Note: The Current Special Education Expenditure amounts for each line should be calculated as follows:

- * Include the total expenditures for special education costs from all governmental funds and the food service fund 51 for the function/sub-function requested
- * Exclude data from sub-functions: 1243,1450,1500,1600,1807,2280,2450,2750,2990
- * Exclude data from objects: 322,511,512,516,561,562,564,566,592,593,594,595,596,597,700,830,899

LEA : 116496503 Shamokin Area SD

Printed 12/5/2024 11:19:14 AM

Benefits for Staff Relative to Collective
Bargaining Agreements

	OBJECT	COVERED	NOT COVERED	TOTAL
10 General Fund	No Self Insurance data to report			
	211 Medical Insurance	3,848,706.38		3,848,706.38
	212 Dental Insurance	103,120.27		103,120.27
	215 Eye Care Insurance	14,010.38		14,010.38
	216 Prescription Insurance			
	271 Self-Insurance Medical Benefits			
	272 Self-Insurance Dental Benefits			
	275 Self-Insurance Eye Care Benefits			
	276 Self-Insurance Prescription Benefits			
	FUND TOTAL	\$3,965,837.03		\$3,965,837.03
50 Enterprise Fund	No Self Insurance data to report			
	211 Medical Insurance	37,822.38		37,822.38
	212 Dental Insurance	850.79		850.79
	215 Eye Care Insurance	75.65		75.65
	216 Prescription Insurance			
	271 Self-Insurance Medical Benefits			
	272 Self-Insurance Dental Benefits			
	275 Self-Insurance Eye Care Benefits			
	276 Self-Insurance Prescription Benefits			
	FUND TOTAL	\$38,748.82		\$38,748.82
60 Internal Service Fund	No Self Insurance data to report			
	211 Medical Insurance			
	212 Dental Insurance			
	215 Eye Care Insurance			
	216 Prescription Insurance			
	271 Self-Insurance Medical Benefits			
	272 Self-Insurance Dental Benefits			
	275 Self-Insurance Eye Care Benefits			
	276 Self-Insurance Prescription Benefits			
	FUND TOTAL			
Total of All Funds		\$4,004,585.85		\$4,004,585.85

LEA : 116496503 Shamokin Area SD

Printed 12/5/2024 11:19:17 AM

Function	Special Education (Prior Year)	Nonspecial Education (Prior Year)	Total (Prior Year)	Special Education (Current Year)	Nonspecial Education (Current Year)	Total (Current Year)
2120 Guidance Services	79,354.89	320,732.91	400,087.80	109,924.81	444,288.98	554,213.79
2140 Psychological Services	31,454.55	127,131.54	158,586.09	32,784.08	132,505.17	165,289.25
2150 Speech Pathology and Audiology Services	107.11	432.89	540.00			
2160 Social Work Services	33,564.82	135,660.72	169,225.54	25,932.13	104,811.28	130,743.41
2260 Instruction and Curriculum Development Services	80,358.91	324,790.90	405,149.81	80,443.95	325,134.63	405,578.58
2350 Legal and Accounting Services	6,411.39	25,913.28	32,324.67	15,629.79	63,171.77	78,801.56
2420 Medical Services	1,053.88	4,259.54	5,313.42	8,229.87	33,263.10	41,492.97
2440 Nursing Services	83,983.27	339,439.70	423,422.97	86,073.09	347,886.23	433,959.32
2700 Student Transportation Services	264,455.51	1,068,864.02	1,333,319.53	268,420.57	1,084,889.80	1,353,310.37
Total	\$580,744.33	\$2,347,225.50	\$2,927,969.83	\$627,438.29	\$2,535,950.96	\$3,163,389.25

LEA : 116496503 Shamokin Area SD

(PRINCIPAL AMOUNTS ONLY)								
<u>GOVERNMENTAL FUNDS/ ACTIVITIES</u>	Short-Term Borrowing	General Obligation Bonds/Notes	Authority Building Obligations	Leases, Other Right to Use Arrangements	Extended Term Financing Agreements	Other Long Term Debt/Liabilities	OPEB, Comp Abs, Net Pension Liab	Total
1. Debt at Beginning of Fiscal Year		7,472,000.00					41,659,536.00	49,131,536.00
2. Additional Debt Incurred During Year					50,001.00		36,055.00	86,056.00
3. Retirements and Repayments		456,000.00			50,001.00		154,000.00	660,001.00
4. Debt at End of Fiscal Year		7,016,000.00					41,541,591.00	48,557,591.00
5. Accreted Interest at End Of Fiscal Year								
6. Total Debt and Accreted Interest		7,016,000.00					41,541,591.00	48,557,591.00
7. Current Portion P&I - Due within 1 year		854,277.76					25,000.00	879,277.76
8. Interest Paid during current fiscal year		395,213.68			238.21			395,451.89

(PRINCIPAL AMOUNTS ONLY)							
<u>PROPRIETARY FUNDS</u>							
1. Debt at Beginning of Fiscal Year							
2. Additional Debt Incurred During Year							
3. Retirements and Repayments							
4. Debt at End of Fiscal Year							
5. Accreted Interest at End Of Fiscal Year							
6. Total Debt and Accreted Interest							
7. Current Portion P&I - Due within 1 year							
8. Interest Paid during current fiscal year							

LEA : 116496503 Shamokin Area SD

Total Principal and Interest Payments Made by Your School - All Funds

Function	Fund		Principal (910)	Principal (920)	Interest (830)	Total (Principal +Interest)	Misc Other Uses (990)
5110	10	General Fund	456,000.00		395,249.68	851,249.68	
5110	20	Special Revenue Funds					
5110	30	Capital Projects Funds					
5110	40	Debt Service Fund					
5110	90	Permanent Fund					
5120	10	General Fund					
5120	20	Special Revenue Funds					
5120	30	Capital Projects Funds					
5120	40	Debt Service Fund					
5140	10	General Fund					
5140	20	Special Revenue Funds					
5140	30	Capital Projects Funds					
5140	40	Debt Service Fund					
5140	90	Permanent Fund					
Total Debt Payments - Governmental Funds			\$456,000.00		\$395,249.68	\$851,249.68	

Function	Fund		Principal (910)	Principal (920)	Interest (830)	Total (Principal +Interest)
5110	50	Enterprise Fund				
5110	60	Internal Service Fund				
5120	50	Enterprise Fund				
5120	60	Internal Service Fund				
5140	50	Enterprise Fund				
5140	60	Internal Service Fund				
Total Debt Payments - Proprietary Funds						

LEA : 116496503 Shamokin Area SD

Debt Details
Governmental Funds/ Activities

Debt Category	Debt Issue Date (MM/YYYY)	Principal Amounts Only				Current Portion Due Within One Year (Principal and Interest)	Interest Paid During Fiscal Year
		Debt at Beginning of Fiscal Year	Additions	Reductions / Repayments	Debt at End of Fiscal Year		
General Obligation Bonds/Notes – CIB	11/2021	2,820,000.00		5,000.00	2,815,000.00	116,412.50	111,525.00
General Obligation Bonds/Notes – CIB	09/2017	3,070,000.00		225,000.00	2,845,000.00	302,851.26	77,815.26
General Obligation Bonds/Notes – CIB	11/2011	1,582,000.00		226,000.00	1,356,000.00	435,014.00	205,873.42
Extended Term Financing Agreements			50,001.00	50,001.00			238.21
Compensated Absences		348,332.00	35,961.00		384,293.00	25,000.00	
Net Pension Liability		38,501,000.00		154,000.00	38,347,000.00		
Other Post-Employment Benefits (OPEB)		2,810,204.00	94.00		2,810,298.00		
Totals for Debt Entered:		\$49,131,536.00	\$86,056.00	\$660,001.00	\$48,557,591.00	\$879,277.76	\$395,451.89

LEA : 116496503 Shamokin Area SD

Printed 12/5/2024 11:19:21 AM

General Fund (10)

Section 1: Tuition/Purchased Services as Reported within Expenditure Detail	Amount
Tuition Reported in General Fund Expenditures 1000-560	5,284,257.20
Purchased Services in General Fund Expenditures 1000-594 and 1000-597	936.21
Section 1 Total	\$5,285,193.41

Section 2: Tuition Paid to Institution Types During Fiscal Year	Tuition Paid For Nonspecial Education	Tuition Paid For Special Education	Total
1 1306 Institutions			
2 Institutionalized Children's Programs		936.21	936.21
3 Juveniles Incarcerated in Adult Facilities			
4 Residential Treatment Facilities			
5 Other Local Education Agencies	52,492.66	52,328.37	104,821.03
6 Brick and Mortar Charter Schools			
7 Cyber Charter Schools	1,345,020.59	1,894,007.41	3,239,028.00
8 Career and Technology Centers	638,699.81	19,245.19	657,945.00
9 Approved Private Schools	59,821.26		59,821.26
10 PA Chartered Schools for the Deaf and Blind			
11 Private Residential Rehabilitative Institutions	279,081.47	394,211.44	673,292.91
12 Juvenile Detention Centers			
13 Special Program Jointures			
14 Other Tuition Not Included Elsewhere In This Section		549,349.00	549,349.00
Section 2 Total	\$2,375,115.79	\$2,910,077.62	\$5,285,193.41

LEA : 116496503 Shamokin Area SD

Printed 12/5/2024 11:19:25 AM

Food Service / Cafeteria Operations Fund (51)

3000 Operation of Non-Instructional Services

Total

100	<u>Personnel Services – Salaries</u>	
100	Personnel Services – Salaries	74,835.85
Total Personnel Services – Salaries		\$74,835.85
200	<u>Personnel Services – Employee Benefits</u>	
210	Group Insurance – Contracted Provider	38,860.51
220	Social Security Contributions	4,067.76
230	PSERS Retirement Contributions	18,464.30
250	Unemployment Compensation	180.34
260	Workers' Compensation	569.51
292	Health Savings Accounts	1,500.00
Total Personnel Services – Employee Benefits		\$63,642.42
400	<u>Purchased Property Services</u>	
410	Cleaning Services	6,200.00
430	Repairs and Maintenance Services	7,542.26
440	Rentals	470.93
Total Purchased Property Services		\$14,213.19
500	<u>Other Purchased Services</u>	
540	Advertising	1,648.46
570	Food Service Management	687,955.94
Total Other Purchased Services		\$689,604.40
600	<u>Supplies</u>	
610	General Supplies	70,850.43
620	Energy	5,336.64
630	Food	622,226.41
650	Supplies & Fees – Technology Related	2,049.99
Total Supplies		\$700,463.47
700	<u>Property</u>	
740	Depreciation	6,515.00
770	Amortization Expense	283.42
Total Property		\$6,798.42
Total 3000 Operation of Non-Instructional Services		\$1,549,557.75

LEA : 116496503 Shamokin Area SD

Printed 12/5/2024 11:19:25 AM

Food Service / Cafeteria Operations Fund (51)

3100 Food Services	<u>Elementary</u>	<u>Secondary</u>	<u>Federal</u>	<u>Total</u>
100 <u>Personnel Services – Salaries</u>				
100 Personnel Services – Salaries				74,835.85
Total Personnel Services – Salaries				\$74,835.85
200 <u>Personnel Services – Employee Benefits</u>				
210 Group Insurance – Contracted Provider				38,860.51
220 Social Security Contributions				4,067.76
230 PSERS Retirement Contributions				18,464.30
250 Unemployment Compensation				180.34
260 Workers' Compensation				569.51
292 Health Savings Accounts				1,500.00
Total Personnel Services – Employee Benefits				\$63,642.42
400 <u>Purchased Property Services</u>				
410 Cleaning Services				6,200.00
430 Repairs and Maintenance Services				7,542.26
440 Rentals				470.93
Total Purchased Property Services				\$14,213.19
500 <u>Other Purchased Services</u>				
540 Advertising				1,648.46
570 Food Service Management				687,955.94
Total Other Purchased Services				\$689,604.40
600 <u>Supplies</u>				
610 General Supplies				70,850.43
620 Energy				5,336.64
630 Food				622,226.41
650 Supplies & Fees – Technology Related				2,049.99
Total Supplies				\$700,463.47
700 <u>Property</u>				
740 Depreciation				6,515.00
770 Amortization Expense				283.42
Total Property				\$6,798.42
Total 3100 Food Services				\$1,549,557.75

LEA : 116496503 Shamokin Area SD

Printed 12/5/2024 11:19:28 AM

	<u>Food Service(51)</u>	<u>Child Care Operations(52)</u>	<u>Other Enterprise(58)</u>	<u>Internal Service(60)</u>	<u>Total</u>
3000 <u>Operation of Non-Instructional Services</u>					
3100 Food Services	1,549,557.75				1,549,557.75
Total Operation of Non-Instructional Services	\$1,549,557.75				\$1,549,557.75
TOTAL ACTUAL EXPENDITURES & OTHER FINANCING USES	\$1,549,557.75				\$1,549,557.75

LEA : 116496503 Shamokin Area SD

Printed 12/5/2024 11:19:33 AM

Fund	School	School Number	Local Personnel	Local Nonpersonnel	State Personnel	State Nonpersonnel	Federal Personnel	Federal Nonpersonnel	Total	Explanation
10										
	Shamokin Area El Sch	7009	8,027,807.21	1,374,041.17	585,983.43	97,694.67	911,569.33	469,223.45	11,466,319.26	
	Shamokin Area HS	7893	7,610,918.62	1,469,119.62	310,948.24	48,825.42	882,668.72	239,301.54	10,561,782.16	
	Shamokin Area Intermediate Sch	8283	2,222,012.75	402,115.19	58,445.52	44,870.79	328,112.23	150,684.68	3,206,241.16	
	Shamokin Area MS	7892	2,351,838.82	495,862.37	123,566.19	29,036.95	440,259.05	108,818.53	3,549,381.91	
Total			20,212,577.40	3,741,138.35	1,078,943.38	220,427.83	2,562,609.33	968,028.20	28,783,724.49	

	<u>Nonspecial Education</u>	<u>Special Education</u>
1000 Instruction		
1400 Other Instructional Programs - Elementary / Secondary	209,463.00	
Total Instruction	\$209,463.00	
TOTAL ACTUAL EXPENDITURES & OTHER FINANCING USES	\$209,463.00	

LEA : 116496503 Shamokin Area SD

Printed 12/5/2024 11:19:39 AM

1000 Instruction

300 <u>Purchased Professional and Technical Services</u>	
322 Professional Educational Services - lus	25,715.00
Total Purchased Professional and Technical Services	\$25,715.00
500 <u>Other Purchased Services</u>	
561 Tuition To Other School Districts Within the State	7,156.00
562 Tuition To Pennsylvania Charter Schools	5,762.00
568 Tuition To Private Residential Rehabilitative Institutions (PRRI) [In-State] and Detention Centers	170,830.00
Total Other Purchased Services	\$183,748.00
Total 1000 Instruction	\$209,463.00

LEA : 116496503 Shamokin Area SD

Printed 12/5/2024 11:19:39 AM

1400 Other Instructional Programs - Elementary / Secondary	<u>Nonspecial Education</u>	<u>Special Education</u>
300 <u>Purchased Professional and Technical Services</u>		
322 Professional Educational Services - Ius	25,715.00	
Total Purchased Professional and Technical Services	\$25,715.00	
500 <u>Other Purchased Services</u>		
561 Tuition To Other School Districts Within the State	7,156.00	
562 Tuition To Pennsylvania Charter Schools	5,762.00	
568 Tuition To Private Residential Rehabilitative Institutions (PRRI) [In-State] and Detention Centers	170,830.00	
Total Other Purchased Services	\$183,748.00	
Total 1400 Other Instructional Programs - Elementary / Secondary	\$209,463.00	

LEA : 116496503 Shamokin Area SD

Printed 12/5/2024 11:19:39 AM

1440 Alternative Regular Education Programs	<u>Nonspecial Education</u>	<u>Special Education</u>
300 <u>Purchased Professional and Technical Services</u>		
322 Professional Educational Services - Ius	25,715.00	
Total Purchased Professional and Technical Services	\$25,715.00	
500 <u>Other Purchased Services</u>		
561 Tuition To Other School Districts Within the State	7,156.00	
562 Tuition To Pennsylvania Charter Schools	5,762.00	
568 Tuition To Private Residential Rehabilitative Institutions (PRRI) [In-State] and Detention Centers	170,830.00	
Total Other Purchased Services	\$183,748.00	
Total 1440 Alternative Regular Education Programs	\$209,463.00	

LEA : 116496503 Shamokin Area SD

Printed 12/5/2024 11:19:39 AM

1441 Adjudicated / Court-Placed Programs	<u>Nonspecial Education</u>	<u>Special Education</u>
300 <u>Purchased Professional and Technical Services</u>		
322 Professional Educational Services - Ius	25,715.00	
Total Purchased Professional and Technical Services	\$25,715.00	
500 <u>Other Purchased Services</u>		
561 Tuition To Other School Districts Within the State	7,156.00	
562 Tuition To Pennsylvania Charter Schools	5,762.00	
568 Tuition To Private Residential Rehabilitative Institutions (PRRI) [In-State] and Detention Centers	170,830.00	
Total Other Purchased Services	\$183,748.00	
Total 1441 Adjudicated / Court-Placed Programs	\$209,463.00	