

LEA Name : Shamokin Area SD
Address : 2000 W State St
Coal Township , PA 17866

County : Northumberland
AUN Number : 116496503
LEA Type : SD

Annual Financial Report Accuracy Certification Statement

For Fiscal Year Ending
6/30/2020

Pennsylvania Department of Education
&
Office of Comptroller Operations

PDE-2056: Intermediate Unit
PDE-2057: School District, AVTS/CTC, Charter School,
and Special Program Jointure

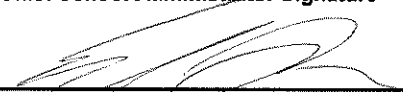
CERTIFICATION: By signing this page I agree that the electronic data submitted is a complete and accurate statement of the financial operations and status of the local education agency for the fiscal year. It has been prepared in accordance with generally accepted accounting principles and established Commonwealth of PA reporting guidelines.



Chief School Administrator Signature

11-24-20

Date



Board Secretary Signature

11/24/20

Date

Karen Colangelo

Contact Person

kcolangelo@indians.k12.pa.us

Contact Person E-mail Address

(570)648-5752 Ext :4123

Contact Person Telephone Number

(570)648-2592

Contact Person Fax Number

Audit Certification
Annual Financial Report:
For Fiscal Year Ending **6/30/2020**
(Pursuant to PA School Code Section 218(b))

LEA Name : Shamokin Area SD
AUN Number : 116496503
County : Northumberland

Audit Certification Due: 12/31/2020

This certification is applicable to the Annual Financial Report data submitted through the Consolidated Financial Reporting System (CFRS).

CERTIFICATION: By signing this page I agree that the financial statements of the school have been properly audited as noted above pursuant to Article XXIV, and in the auditor's professional opinion, the Annual Financial Report (PDE-2057) submitted through CFRS is materially consistent with the audited financial statements.

Chief School Administrator

Board Secretary

Signature

Date

Signature

Date

Karen Colangelo

Contact Person

kcolangelo@indians.k12.pa.us

Contact Person E-mail Address

(570)648-5752 Ext :4123

Contact Person Telephone Number

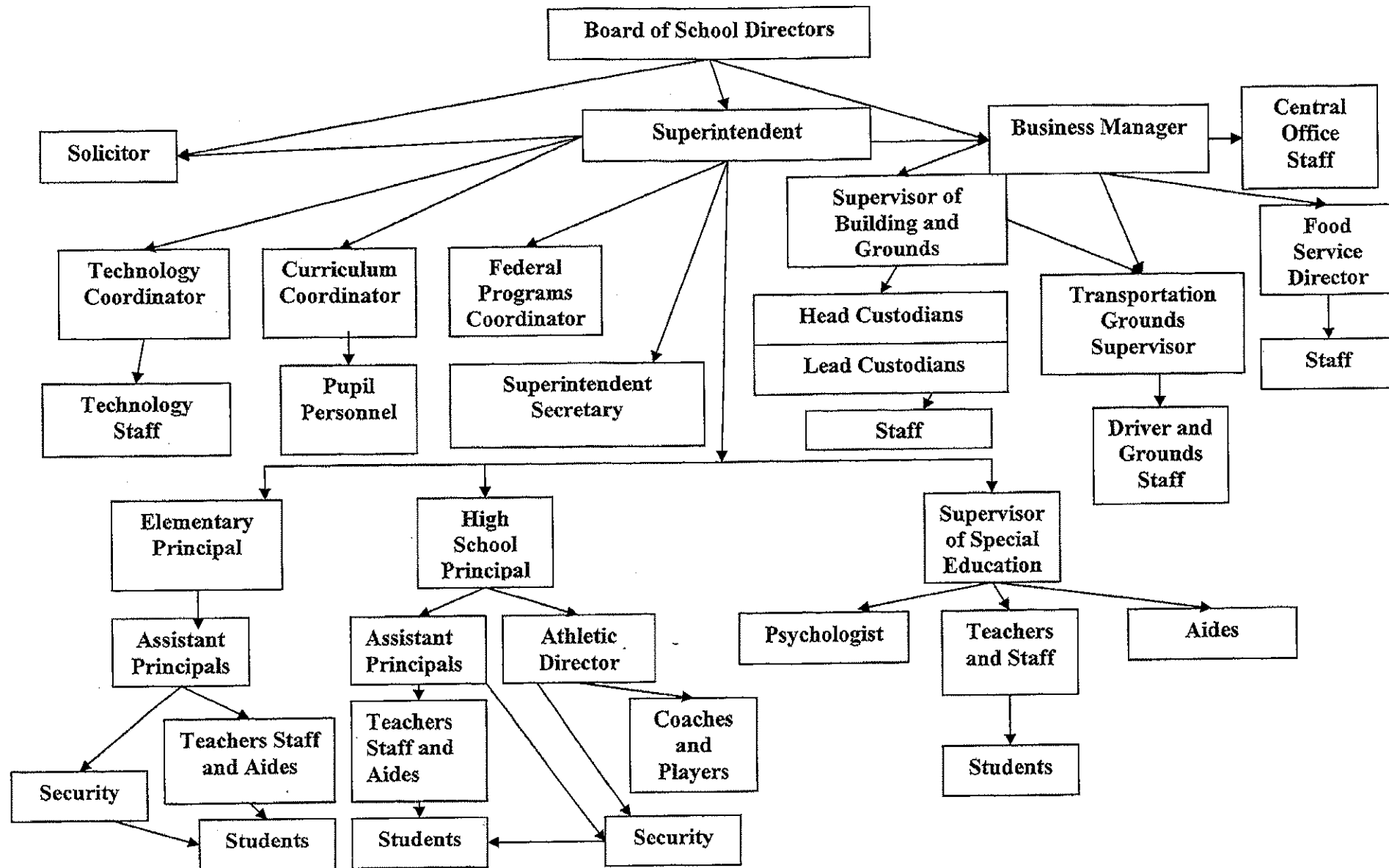
(570)648-2592

Contact Person Fax Number

**SHAMOKIN AREA SCHOOL
DISTRICT ORGANIZATIONAL
CHART**

No. 008

SECTION: Local Board Procedures
TITLE: Organization Chart
ADOPTED:
REVISED:



SECTION: FINANCES

TITLE: GASB STATEMENT 34

ADOPTED: November 11, 2003

REVISED:

SHAMOKIN AREA SCHOOL DISTRICT

	622. GASB STATEMENT 34
1. Purpose SC 613	<p>The Board recognizes the need to implement the required accounting and financial reporting standards stipulated by the Pennsylvania Department of Education.</p> <p>The primary objectives of implementing the GASB Statement 34 are to assure compliance with state requirements, and properly account for both the financial and economic resources of the district.</p>
2. Authority SC 218	<p>Participation of the school district in any such activity shall be in accordance with Board policy.</p>
3. Delegation of Responsibility	<p>The responsibility to coordinate the compilation and preparation of all information necessary to implement this policy is delegated to the Business Manager.</p> <p>The designated individual shall be responsible for implementing the necessary procedures to establish and maintain a fixed asset inventory, including depreciation schedules. Depreciation shall be computed on a straight-line basis over the useful lives of the assets, using an averaging convention. Normal maintenance and repairs shall be charged to expense as incurred; major renewals and betterments that materially extend the life or increase the value of the asset shall be capitalized. A schedule of accumulated depreciation shall be consistent from year to year. The basis for depreciation, including groups of assets and useful lives, shall be in writing and submitted for review to the independent auditors.</p> <p>The Business Manager shall prepare the required Management Discussion and Analysis (MD&A). The MD&A shall be in the form required by GASB Statement 34 and shall be submitted to the Board for approval, prior to publication.</p> <p>Prior to submission of the MD&A for Board approval, the district's independent auditors shall review the MD&A, in accordance with SAS No. 52, "Required Supplementary Information."</p>

<p>4. Guidelines</p> <p>School Code 218, 613</p>	<p>In order to associate debt with acquired assets and to avoid net asset deficits, any asset that has been acquired with debt proceeds shall be capitalized, regardless of the cost of the asset. The asset life of these assets shall be considered relative to the time of the respective debt amortizations.</p> <p>For all other assets not acquired by debt proceeds, the dollar value of any single item for inclusion in the fixed assets accounts shall be not less than \$1,500.</p> <p>The capitalization threshold shall be set at a level that will capture at least eighty percent (80%) of all fixed assets.</p> <p>The assets listed below do not normally individually meet capitalization threshold criteria:</p> <ol style="list-style-type: none"> 1. Library books. 2. Classroom texts. 3. Computer equipment. 4. Classroom furniture. <p>For group asset depreciation purposes, the estimated useful life of the group may be based on the weighted average or simple average of the useful life of individual items, or on an assessment of the life of the group as a whole. Periodically, the district shall review the estimated life of groups of assets and adjust the remaining depreciation life of the group.</p> <p>Assets that fall below the capitalization threshold for GASB 34 reporting purposes may still be significant for insurance, warranty service, and obsolescence/replacement policy tracking purposes. The district may record and maintain these non-GASB 34 asset inventories in subsidiary ledgers.</p>
---	---

<u>Val Number</u>	<u>Description</u>	<u>Justification</u>
30147	Revenue Detail – Fund 32: Revenue has been entered in account 6999 – Other Revenues not specified in other 69XX. Please provide a brief description of this revenue. Revenue Detail 6999, Fund 32: \$125,000.00	This was a donation received to be used towards the football field turf replacement. \$125,000

LEA : 116496503 Shamokin Area SD

Printed 11/25/2020 9:17:42 AM

Amounts Expressed in Whole Dollars		<u>General Fund</u> <u>(10)</u>	<u>Student Sponsored</u> <u>Activity Fund</u> <u>(21)</u>	<u>Public Purpose Trust</u> <u>(27)</u>	<u>Other Compt Approved</u> <u>(28)</u>	<u>Athletic / Activity</u> <u>(29)</u>
Assets And Deferred Outflows Of Resources						
Assets						
0100	Cash and Cash Equivalents	2,167,868				
0110	Investments	171,460				
0120	Taxes Receivable	3,212,718				
0130	Due From Other Funds	222,515				
0141	Due From Other Governments	4,020,165				
0142	State Revenue Receivable	1,062,182				
0143	Federal Revenue Receivable	824,962				
0145	Other Intergovernmental Revenue Receivable					
0146	Due from Primary Government					
0147	Due from Component Unit					
0150	Other Receivables					
0170	Inventories					
0180	Prepaid Expenses (Expenditures)					
0190	Other Current Assets					
Total Assets		\$11,681,870				
0910	Deferred Outflows of Resources					
Total Assets And Deferred Outflows Of Resources		\$11,681,870				

LEA : 116496503 Shamokin Area SD

Printed 11/25/2020 9:17:42 AM

Amounts Expressed in Whole Dollars		<u>Capital Reserve (690.</u> <u>1850)</u> <u>(31)</u>	<u>Capital Reserve (1431)</u> <u>(32)</u>	<u>Other Capital Projects</u> <u>Fund</u> <u>(39)</u>	<u>Debt Service</u> <u>(40)</u>	<u>Permanent</u> <u>(90)</u>
Assets And Deferred Outflows Of Resources						
Assets						
0100	Cash and Cash Equivalents		760,155			
0110	Investments					
0120	Taxes Receivable					
0130	Due From Other Funds		7,955			
0141	Due From Other Governments					
0142	State Revenue Receivable					
0143	Federal Revenue Receivable					
0145	Other Intergovernmental Revenue Receivable					
0146	Due from Primary Government					
0147	Due from Component Unit					
0150	Other Receivables					
0170	Inventories					
0180	Prepaid Expenses (Expenditures)					
0190	Other Current Assets					
Total Assets			\$768,110			
0910	Deferred Outflows of Resources					
Total Assets And Deferred Outflows Of Resources			\$768,110			

LEA : 116496503 Shamokin Area SD

Printed 11/25/2020 9:17:42 AM

Amounts Expressed in Whole Dollars		<u>Total Governmental</u>
		<u>Funds</u>
Assets And Deferred Outflows Of Resources		
Assets		
0100 Cash and Cash Equivalents	2,928,023	
0110 Investments	171,460	
0120 Taxes Receivable	3,212,718	
0130 Due From Other Funds	230,470	
0141 Due From Other Governments	4,020,165	
0142 State Revenue Receivable	1,062,182	
0143 Federal Revenue Receivable	824,962	
0145 Other Intergovernmental Revenue Receivable		
0146 Due from Primary Government		
0147 Due from Component Unit		
0150 Other Receivables		
0170 Inventories		
0180 Prepaid Expenses (Expenditures)		
0190 Other Current Assets		
Total Assets	\$12,449,980	
0910 Deferred Outflows of Resources		
Total Assets And Deferred Outflows Of Resources	\$12,449,980	

LEA : 116496503 Shamokin Area SD

Printed 11/25/2020 9:17:42 AM

Amounts Expressed in Whole Dollars		<u>General Fund</u> <u>(10)</u>	<u>Student Sponsored</u> <u>Activity Fund</u> <u>(21)</u>	<u>Public Purpose Trust</u> <u>(27)</u>	<u>Other Compt Approved</u> <u>(28)</u>	<u>Athletic / Activity</u> <u>(29)</u>
Liabilities And Deferred Inflows Of Resources And Fund Balances						
Liabilities						
0400	Due to Other Funds	7,955				
0411	Due to Other Governments					
0412	Due to Primary Government					
0413	Due to Component Unit					
0420	Accounts Payable	3,512,232				
0430	Contracts Payable					
0440	Current Portion of Long-Term Debt					
0450	Short-Term Payables					
0461	Accrued Salaries and Benefits	1,720,963				
0462	Payroll Deductions and Withholding	1,093,579				
0480	Unearned Revenues	13,804				
0490	Other Current Liabilities	150				
Total Liabilities		\$6,348,683				
0950	Deferred Inflows of Resources	3,034,025				
Fund Balances						
0810	Nonspendable Fund Balance					
0820	Restricted Fund Balance					
0830	Committed Fund Balance					
0840	Assigned Fund Balance	2,000,000				
0850	Unassigned Fund Balance	299,162				
Total Fund Balances		\$2,299,162				
Total Liabilities, Deferred Inflows Of Resources And Fund Balances		\$11,681,870				

LEA : 116496503 Shamokin Area SD

Printed 11/25/2020 9:17:42 AM

Amounts Expressed in Whole Dollars		<u>Capital Reserve (690.</u> <u>1850)</u> <u>(31)</u>	<u>Capital Reserve (1431)</u> <u>(32)</u>	<u>Other Capital Projects</u> <u>Fund</u> <u>(39)</u>	<u>Debt Service</u> <u>(40)</u>	<u>Permanent</u> <u>(90)</u>
Liabilities And Deferred Inflows Of Resources And Fund Balances						
Liabilities						
0400	Due to Other Funds					
0411	Due to Other Governments					
0412	Due to Primary Government					
0413	Due to Component Unit					
0420	Accounts Payable		3,610			
0430	Contracts Payable					
0440	Current Portion of Long-Term Debt					
0450	Short-Term Payables					
0461	Accrued Salaries and Benefits					
0462	Payroll Deductions and Withholding					
0480	Unearned Revenues					
0490	Other Current Liabilities					
Total Liabilities			\$3,610			
0950	Deferred Inflows of Resources					
Fund Balances						
0810	Nonspendable Fund Balance					
0820	Restricted Fund Balance		764,500			
0830	Committed Fund Balance					
0840	Assigned Fund Balance					
0850	Unassigned Fund Balance					
Total Fund Balances			\$764,500			
Total Liabilities, Deferred Inflows Of Resources And Fund Balances			\$768,110			

LEA : 116496503 Shamokin Area SD

Printed 11/25/2020 9:17:42 AM

Amounts Expressed in Whole Dollars		<u>Total Governmental</u> <u>Funds</u>
Liabilities And Deferred Inflows Of Resources And Fund Balances		
Liabilities		
0400 Due to Other Funds		7,955
0411 Due to Other Governments		
0412 Due to Primary Government		
0413 Due to Component Unit		
0420 Accounts Payable		3,515,842
0430 Contracts Payable		
0440 Current Portion of Long-Term Debt		
0450 Short-Term Payables		
0461 Accrued Salaries and Benefits		1,720,963
0462 Payroll Deductions and Withholding		1,093,579
0480 Unearned Revenues		13,804
0490 Other Current Liabilities		150
Total Liabilities		\$6,352,293
0950 Deferred Inflows of Resources		3,034,025
Fund Balances		
0810 Nonspendable Fund Balance		
0820 Restricted Fund Balance		764,500
0830 Committed Fund Balance		
0840 Assigned Fund Balance		2,000,000
0850 Unassigned Fund Balance		299,162
Total Fund Balances		\$3,063,662
Total Liabilities, Deferred Inflows Of Resources And Fund Balances		\$12,449,980

Amounts Expressed in Whole Dollars	General Fund (10)	Student Sponsored Activity Fund (21)	Public Purpose Trust (27)	Other Compt Approved (28)	Athletic / Activity (29)
Revenues					
6000 Revenue from Local Sources	6,997,549				
7000 Revenue from State Sources	20,729,064				
8000 Revenue from Federal Sources	1,431,621				
Total Revenues	\$29,158,234				
Expenditures					
1000 Instruction	21,392,433				
2000 Support Services	9,911,509				
3000 Operation of Non-Instructional Services	587,510				
4000 Facilities Acquisition, Construction and Improvement Services					
5110 Debt Service	407,850				
5130 Refund of Prior Year Revenues / Receipts	108				
Total Expenditures	\$32,299,410				
Excess (Deficiency) Of Revenues Over Expenditures	(\$3,141,176)				
Other Financing Sources (Uses)					
9110 Face Value of Bonds Issued					
9120 Proceeds from Refunding of Bonds					
9130 Bond Premiums					
9200 Proceeds from Extended-Term Financing	1,050,001				
9300 Interfund Transfers - IN					
9400 Sale of or Compensation for Loss of Fixed Assets					
9710 Transfers from Component Units					
9720 Transfers from Primary Governments					
9910 Other Financing Sources Not Listed in the 9000 Series					
9990 Insurance Recoveries					
5120 Debt Service – Refunded Bonds					
5150 Bond Discounts					
5200 Interfund Transfers – Out					
5300 Transfers Out to Component Units/Primary Governments					
Total Other Financing Sources (Uses)	\$1,050,001				

Amounts Expressed in Whole Dollars	<u>Capital Reserve (690.1850)</u> <u>(31)</u>	<u>Capital Reserve (1431)</u> <u>(32)</u>	<u>Other Capital Projects</u> <u>Fund</u> <u>(39)</u>	<u>Debt Service</u> <u>(40)</u>	<u>Permanent</u> <u>(90)</u>
Revenues					
6000 Revenue from Local Sources		140,281			
7000 Revenue from State Sources					
8000 Revenue from Federal Sources					
Total Revenues		\$140,281			
Expenditures					
1000 Instruction					
2000 Support Services		63,870			
3000 Operation of Non-Instructional Services					
4000 Facilities Acquisition, Construction and Improvement Services					
5110 Debt Service		282,133			
5130 Refund of Prior Year Revenues / Receipts					
Total Expenditures		\$346,003			
Excess (Deficiency) Of Revenues Over Expenditures		(\$205,722)			
Other Financing Sources (Uses)					
9110 Face Value of Bonds Issued					
9120 Proceeds from Refunding of Bonds					
9130 Bond Premiums					
9200 Proceeds from Extended-Term Financing					
9300 Interfund Transfers - IN					
9400 Sale of or Compensation for Loss of Fixed Assets					
9710 Transfers from Component Units					
9720 Transfers from Primary Governments					
9910 Other Financing Sources Not Listed in the 9000 Series					
9990 Insurance Recoveries					
5120 Debt Service – Refunded Bonds					
5150 Bond Discounts					
5200 Interfund Transfers – Out					
5300 Transfers Out to Component Units/Primary Governments					
Total Other Financing Sources (Uses)					

Amounts Expressed in Whole Dollars	<u>Total Governmental Funds</u>
Revenues	
6000 Revenue from Local Sources	7,137,830
7000 Revenue from State Sources	20,729,064
8000 Revenue from Federal Sources	1,431,621
Total Revenues	\$29,298,515
Expenditures	
1000 Instruction	21,392,433
2000 Support Services	9,975,379
3000 Operation of Non-Instructional Services	587,510
4000 Facilities Acquisition, Construction and Improvement Services	
5110 Debt Service	689,983
5130 Refund of Prior Year Revenues / Receipts	108
Total Expenditures	\$32,645,413
Excess (Deficiency) Of Revenues Over Expenditures	(\$3,346,898)
Other Financing Sources (Uses)	
9110 Face Value of Bonds Issued	
9120 Proceeds from Refunding of Bonds	
9130 Bond Premiums	
9200 Proceeds from Extended-Term Financing	1,050,001
9300 Interfund Transfers - IN	
9400 Sale of or Compensation for Loss of Fixed Assets	
9710 Transfers from Component Units	
9720 Transfers from Primary Governments	
9910 Other Financing Sources Not Listed in the 9000 Series	
9990 Insurance Recoveries	
5120 Debt Service – Refunded Bonds	
5150 Bond Discounts	
5200 Interfund Transfers – Out	
5300 Transfers Out to Component Units/Primary Governments	
Total Other Financing Sources (Uses)	\$1,050,001

Amounts Expressed in Whole Dollars	<u>General Fund</u> <u>(10)</u>	<u>Student Sponsored</u> <u>Activity Fund</u> <u>(21)</u>	<u>Public Purpose Trust</u> <u>(27)</u>	<u>Other Compt Approved</u> <u>(28)</u>	<u>Athletic / Activity</u> <u>(29)</u>
Special And Extraordinary Items					
9920 Special Items – Gains					
9930 Extraordinary Items – Gains					
5520 Special Items – Losses					
5530 Extraordinary Items – Losses					
Net Change In Fund Balances	(\$2,091,175)				
Fund Balance					
0001 Fund Balance - Beginning of Fiscal Year	4,390,336				
Fund Balance - End Of Year	\$2,299,161				

Amounts Expressed in Whole Dollars		<u>Capital Reserve (690.</u> <u>1850)</u> <u>(31)</u>	<u>Capital Reserve (1431)</u> <u>(32)</u>	<u>Other Capital Projects</u> <u>Fund</u> <u>(39)</u>	<u>Debt Service</u> <u>(40)</u>	<u>Permanent</u> <u>(90)</u>
Special And Extraordinary Items						
9920	Special Items – Gains					
9930	Extraordinary Items – Gains					
5520	Special Items – Losses					
5530	Extraordinary Items – Losses					
Net Change In Fund Balances			(\$205,722)			
Fund Balance						
0001	Fund Balance - Beginning of Fiscal Year		970,222			
Fund Balance - End Of Year			\$764,500			

Amounts Expressed in Whole Dollars		<u>Total Governmental Funds</u>
Special And Extraordinary Items		
9920	Special Items – Gains	
9930	Extraordinary Items – Gains	
5520	Special Items – Losses	
5530	Extraordinary Items – Losses	
Net Change In Fund Balances		(\$2,296,897)
Fund Balance		
0001	Fund Balance - Beginning of Fiscal Year	5,360,558
Fund Balance - End Of Year		\$3,063,661

LEA : 116496503 Shamokin Area SD

Printed 11/25/2020 9:17:53 AM

Amounts Expressed in Whole Dollars	<u>Food Service</u> <u>(51)</u>	<u>Child Care</u> <u>Operations</u> <u>(52)</u>	<u>Other Enterprise</u> <u>(58)</u>	<u>TOTAL</u>	<u>Internal Service</u> <u>(60)</u>
Assets And Deferred Outflows Of Resources					
Current Assets					
0100 Cash and Cash Equivalents	2,091,424			2,091,424	
0110 Investments					
0130 Due From Other Funds					
0141 Due From Other Governments					
0142 State Revenue Receivable	359			359	
0143 Federal Revenue Receivable	8,536			8,536	
0146 Due from Primary Government					
0147 Due from Component Unit					
0150 Other Receivables					
0170 Inventories	33,981			33,981	
0180 Prepaid Expenses (Expenditures)					
0190 Other Current Assets					
Total Current Assets	\$2,134,300			\$2,134,300	
Noncurrent Assets					
0211 Land					
0212 Site Improvements (Net)					
0220 Buildings and Building Improvements (Net)					
0230 Machinery, Equipment and Furniture (Net)	31,387			31,387	
0250 Construction in Progress					
0260 Long Term Prepayments					
0290 Other Noncurrent Assets					
Total Noncurrent Assets	\$31,387			\$31,387	
0910 Deferred Outflows of Resources					
Total Assets And Deferred Outflows Of Resources	\$2,165,687			\$2,165,687	

LEA : 116496503 Shamokin Area SD

Printed 11/25/2020 9:17:53 AM

Amounts Expressed in Whole Dollars	Food Service (51)	Child Care Operations (52)	Other Enterprise (58)	TOTAL	Internal Service (60)
Liabilities And Deferred Inflows Of Resources And Net Position					
Current Liabilities					
0400 Due to Other Funds	222,515			222,515	
0411 Due to Other Governments					
0413 Due to Component Unit					
0420 Accounts Payable	9,424			9,424	
0430 Contracts Payable					
0440 Current Portion of Long-Term Debt					
0450 Short-Term Payables					
0461 Accrued Salaries and Benefits					
0462 Payroll Deductions and Withholding					
0480 Unearned Revenues	17,560			17,560	
0490 Other Current Liabilities	8,709			8,709	
Total Current Liabilities	\$258,208			\$258,208	
Noncurrent Liabilities					
0510 Bonds Payable					
0520 Extended-Term Financing Agreements Payable					
0530 Lease-Purchase Obligations					
0540 Accumulated Compensated Absences					
0550 Authority Lease Obligations					
0560 Other Post-Employment Benefits (OPEB)					
0570 Net Pension Liability					
0599 Other Noncurrent Liabilities					
Total Noncurrent Liabilities					
Total Liabilities	\$258,208			\$258,208	
0950 Deferred Inflows of Resources					
Net Position					
0791 Net Investment in Capital Assets	31,520			31,520	
0008 Restricted Net Position (0792 – 0798)					
0799 Unrestricted Net Position	1,875,959			1,875,959	
Total Net Position	\$1,907,479			\$1,907,479	
Total Liabilities And Deferred Inflows Of Resources And Net Position	\$2,165,687			\$2,165,687	

Amounts Expressed in Whole Dollars	<u>Food Service</u> <u>(51)</u>	<u>Child Care Operations</u> <u>(52)</u>	<u>Other Enterprise</u> <u>(58)</u>	<u>TOTAL</u>	<u>Internal Service</u> <u>(60)</u>
Operating Revenues					
6600 Food Service Revenue	119,845			119,845	
0071 Charges for Services					
0072 Other Operating Revenue					
Total Operating Revenues	\$119,845			\$119,845	
Operating Expenses					
100 Personnel Services – Salaries	71,292			71,292	
200 Personnel Services – Employee Benefits	58,488			58,488	
300 Purchased Professional and Technical Services					
400 Purchased Property Services	13,959			13,959	
500 Other Purchased Services	475,282			475,282	
600 Supplies	645,607			645,607	
740 Depreciation	5,340			5,340	
810 Dues and Fees					
890 Miscellaneous Expenditures					
Total Operating Expenses	\$1,269,968			\$1,269,968	
Operating Income (Loss)	(\$1,150,123)			(\$1,150,123)	
Non Operating Revenues (Expenses)					
6500 Earnings on Investments	22,798			22,798	
6920 Contributions and Donations from Private Sources					
6930 Gains or Losses on Sale of Fixed Assets					
6991 Refunds of a Prior Year Expenditure					
7000 Revenue from State Sources	49,442			49,442	
8000 Revenue from Federal Sources	1,299,157			1,299,157	
9990 Insurance Recoveries					
820 Claims and Judgments Against the LEA					
830 Interest					
TOTAL Non Operating Revenues (Expenses)	\$1,371,397			\$1,371,397	
Income (Loss) Before Contributions And Transfers	\$221,274			\$221,274	

Amounts Expressed in Whole Dollars	<u>Food Service</u> (51)	<u>Child Care Operations</u> (52)	<u>Other Enterprise</u> (58)	<u>TOTAL</u>	<u>Internal Service</u> (60)
Contributions, Transfers, and Special and Extraordinary Items					
5200 Interfund Transfers – Out					
5300 Transfers Out to Component Units/Primary Governments					
5520 Special Items – Losses					
5530 Extraordinary Items – Losses					
9300 Interfund Transfers - IN					
9500 Capital Contributions					
9700 Transfers IN From Component Units/Primary Governments					
9920 Special Items – Gains					
9930 Extraordinary Items – Gains					
Change In Net Position	\$221,274			\$221,274	
0002 Net Position - Beginning of Fiscal Year	1,686,205			1,686,205	
0003 Accounting Changes / Residual Equity Transfers					
Net Position - End Of Year	\$1,907,479			\$1,907,479	

LEA : 116496503 Shamokin Area SD

Printed 11/25/2020 9:18:07 AM

Amounts Expressed in Whole Dollars	<u>Food Service</u> <u>(51)</u>	<u>Child Care Operations</u> <u>(52)</u>	<u>Other Enterprise</u> <u>(58)</u>	<u>TOTAL</u>	<u>Internal Service(60)</u>
Cash Flows From Operating Activities					
0011 Cash Receipts From Users	124,990			124,990	
0012 Cash Receipts From Assessments Made to Other Funds					
0013 Cash Receipts From Earnings on Investments					
0014 Cash Receipts From Other Operating Revenue					
0015 Cash Payments To Employees For Services	129,780			129,780	
0016 Cash Payments For Insurance Claims					
0017 Cash Payments To Suppliers For Goods and Services	1,067,328			1,067,328	
0018 Cash Payments For Other Operating Expenses					
Net Cash Provided By (Used For) Operating Activities	(\$1,072,118)			(\$1,072,118)	
Cash Flows From Non-Capital Financing Activities					
0021 Receipts From Local Sources - 6000					
0022 Receipts From State Sources - 7000	51,287			51,287	
0023 Receipts From Federal Sources -8000	1,345,934			1,345,934	
0024 Notes and Loans Received (Repaid)					
0025 Interest Paid on Notes/Loans - 5100-830					
0026 Operating Transfers In (Out)/Residual Equity Trans					
0027 Operating Transfers In (Out) Primary Government / Comp Unit					
0028 Receipts From Refund of Prior Year Expenditures - 6991					
0029 Special and Extraordinary Gains (losses)					
0030 Receipts from Insurance Recoveries -9990					
Net Cash Prov By (Used for) Non-Capital Financing Activities	\$1,397,221			\$1,397,221	
Cash Flows From Capital and Related Financing Activities					
0031 Payments For Fac Acq, Const, and Imp - 4000	(5,340)			(5,340)	
0032 Gain / (Loss) on Sale of Fixed Assets - 6930					
0033 Proceeds From Extended Term Financing - 9200					
0034 Principal Paid on Financing Agreements					
0035 Interest Paid on Financing Agreements - 5100-830					
0036 (Inc) Dec in Contributed Capital					
Net Cash Prov By (Used for) Capital and Related Financing Activities	(\$5,340)			(\$5,340)	
Cash Flows From Investing Activities					
0041 Earnings on Investments - 6500	22,798			22,798	
0042 Purchase of Inv Securities / Deposits to Inv Pools					
0043 Receipts From Investment Pool Withdrawals					
0044 Proceeds from Sale and Maturity of Inv Securities					

LEA : 116496503 Shamokin Area SD

Printed 11/25/2020 9:18:07 AM

0045 Loans Received (Paid)

Net Cash Prov By (Used for) Investing Activities	\$22,798	\$22,798
--	----------	----------

LEA : 116496503 Shamokin Area SD

Printed 11/25/2020 9:18:07 AM

	Food Service (51)	Child Care Operations (52)	Other Enterprise (58)	TOTAL	Internal Service (60)
Net Increase (Decrease) in Cash Flows	342,561			342,561	
0004 Cash and Cash Equivalents Beginning of Year	1,748,863			1,748,863	
Cash and Cash Equivalents at Year End	\$2,091,424			\$2,091,424	
Reconciliation of Operating Income (Loss) To Net Cash Provided by (Used For) Operating Activities					
0005 Operating Income (Loss) per REP	(1,150,123)			(1,150,123)	
Adjustments					
0051 Depreciation and Net Amortization	5,340			5,340	
0052 Provision for Uncollectible Accounts					
0053 Other Adjustments	3,468			3,468	
Effect of Changes in Assets, Liabilities, Deferred Outflows and Deferred Inflows					
0054 (Inc) Dec In Accounts Receivable (0120-0150)	9,424			9,424	
0055 Advances to Other Funds (0160)	59,490			59,490	
0056 (Inc) Dec in Inventories (0170)	(1,394)			(1,394)	
0057 (Inc) Dec in Prepaid Expenses (0180)					
0058 (Inc) Dec in Other Current or Noncurrent Assets					
0064 Deferred Outflows (0910)					
0059 Inc (Dec) in Accounts Payable (0400-0450)	1,677			1,677	
0060 Inc (Dec) in Accrued Salaries/Benefits (0461)					
0065 Inc (Dec) in Net Pension Liabilities (0570)					
0066 Inc (Dec) in Other Postemp Benefit Oblig (0560)					
0061 Inc (Dec) in Payroll Deductions/Withholding (0462)					
0062 Inc (Dec) in Unearned Revenue (0480)					
0063 Inc (Dec) in Other Current or Noncurrent Liabilities					
0067 Deferred Inflows (0950)					
Total Adjustments	\$78,005			\$78,005	
Cash Provided By (Used for) Total	(\$1,072,118)			(\$1,072,118)	

COMBINED STATEMENT OF CASH FLOWS
SCHEDULE OF NONCASH INVESTING, CAPITAL, AND FINANCING ACTIVITIES

Explanation of Transaction and Balance Sheet Effect	Amount
Total	

LEA : 116496503 Shamokin Area SD

Printed 11/25/2020 9:18:10 AM

Amounts Expressed in Whole Dollars	Private Purpose Trust (71)	Investment Trust (72)	Pension Trust (73)	Student Activity Custodial (81)
Assets And Deferred Outflows Of Resources				
Assets				
0100 Cash and Cash Equivalents	58,353			198,459
0110 Investments				
0130 Due From Other Funds				
0140 Due from Other Governments, Primary Government and Component Units				
0150 Other Receivables				
0170 Inventories				
0180 Prepaid Expenses (Expenditures)				
0190 Other Current Assets				
0220 Buildings and Building Improvements (Net)				
0230 Machinery, Equipment and Furniture (Net)				
Total Assets	\$58,353			\$198,459
0910 Deferred Outflows of Resources				
Total Assets And Deferred Outflows Of Resources	\$58,353			\$198,459

LEA : 116496503 Shamokin Area SD

Printed 11/25/2020 9:18:10 AM

Amounts Expressed in Whole Dollars		<u>Other Custodial</u> <u>(89)</u>	<u>Fiduciary Component Units</u> <u>(98)</u>	<u>Total Fiduciary Funds</u>
Assets And Deferred Outflows Of Resources				
Assets				
0100	Cash and Cash Equivalents			256,812
0110	Investments			
0130	Due From Other Funds			
0140	Due from Other Governments, Primary Government and Component Units			
0150	Other Receivables			
0170	Inventories			
0180	Prepaid Expenses (Expenditures)			
0190	Other Current Assets			
0220	Buildings and Building Improvements (Net)			
0230	Machinery, Equipment and Furniture (Net)			
Total Assets				\$256,812
0910	Deferred Outflows of Resources			
Total Assets And Deferred Outflows Of Resources				\$256,812

LEA : 116496503 Shamokin Area SD

Printed 11/25/2020 9:18:10 AM

Amounts Expressed in Whole Dollars		<u>Private Purpose Trust</u>	<u>Investment Trust</u>	<u>Pension Trust</u>	<u>Student Activity Custodial</u>
		<u>(71)</u>	<u>(72)</u>	<u>(73)</u>	<u>(81)</u>
Liabilities, Deferred Inflows Of Resources And Net Position					
Liabilities					
0400	Due to Other Funds				
0410	Due to Other Governments, Primary Government and Component Units				
0420	Accounts Payable				
0430	Contracts Payable				
0450	Short-Term Payables				
0460	Payroll Accruals and Withholdings				
0480	Unearned Revenues				
0490	Other Current Liabilities				198,459
Total Liabilities					\$198,459
0950	Deferred Inflows of Resources				
Net Position					
0791	Net Investment in Capital Assets				
0009	Restricted Net Position (0792 – 0798)				
0799	Unrestricted Net Position	58,353			
Total Net Position		\$58,353			
Total Liabilities, Deferred Inflows Of Resources And Net Position		\$58,353			\$198,459

LEA : 116496503 Shamokin Area SD

Printed 11/25/2020 9:18:10 AM

Amounts Expressed in Whole Dollars		<u>Other Custodial</u> <u>(89)</u>	<u>Fiduciary Component Units</u> <u>(98)</u>	<u>Total Fiduciary Funds</u>
Liabilities, Deferred Inflows Of Resources And Net Position				
Liabilities				
0400	Due to Other Funds			
0410	Due to Other Governments, Primary Government and Component Units			
0420	Accounts Payable			
0430	Contracts Payable			
0450	Short-Term Payables			
0460	Payroll Accruals and Withholdings			
0480	Unearned Revenues			
0490	Other Current Liabilities			198,459
Total Liabilities				\$198,459
0950	Deferred Inflows of Resources			
Net Position				
0791	Net Investment in Capital Assets			
0009	Restricted Net Position (0792 – 0798)			
0799	Unrestricted Net Position			58,353
Total Net Position				\$58,353
Total Liabilities, Deferred Inflows Of Resources And Net Position				\$256,812

LEA : 116496503 Shamokin Area SD

Printed 11/25/2020 9:18:13 AM

Amounts Expressed in Whole Dollars	<u>Private Purpose Trust</u> <u>(71)</u>	<u>Investment Trust</u> <u>(72)</u>	<u>Pension Trust</u> <u>(73)</u>	<u>Student Activity</u> <u>Custodial</u> <u>(81)</u>	<u>Other Custodial</u> <u>(89)</u>	<u>Fiduciary Component</u> <u>Units</u> <u>(98)</u>
Additions						
0091 Gifts and Contributions	1,189					
0095 Net Investment Earnings	6					
0092 Other Additions						
Deductions						
0093 Scholarships Awarded	2,360					
0094 Other Deductions						
Change In Net Position	(\$1,165)					
0006 Net Position – Beginning of Fiscal Year	59,518					
0007 Net Position Held in Trust for Pension Benefits						
Net Position - End of Fiscal Year	\$58,353					

LEA : 116496503 Shamokin Area SD

Printed 11/25/2020 9:18:13 AM

Amounts Expressed in Whole Dollars		<u>Total Fiduciary</u>
		<u>Funds</u>
Additions		
0091	Gifts and Contributions	1,189
0095	Net Investment Earnings	6
0092	Other Additions	
Deductions		
0093	Scholarships Awarded	2,360
0094	Other Deductions	
Change In Net Position		(\$1,165)
0006	Net Position – Beginning of Fiscal Year	59,518
0007	Net Position Held in Trust for Pension Benefits	
Net Position - End of Fiscal Year		\$58,353

	Revenue Reported In Current Year	Current Year Tax Accrual	Prior Year Tax Accrual	Taxes Collected In Current Year
Revenue from Local Sources				
6111 Current Real Estate Taxes	3,017,519.33			3,017,519.33
6114 Payments in Lieu of Current Taxes - State / Local	9,369.13			9,369.13
6120 Current Per Capita Taxes, Section 679	33,867.50			33,867.50
6141 Current Act 511 Per Capita Taxes	67,013.06			67,013.06
6143 Current Act 511 Local Services Taxes	25,450.63			25,450.63
6151 Current Act 511 Earned Income Taxes	1,456,903.82			1,456,903.82
6152 Current Act 511 Occupation Taxes	413,089.80			413,089.80
6153 Current Act 511 Real Estate Transfer Taxes	135,646.08			135,646.08
6155 Current Act 511 Business Privilege Taxes	189,149.85			189,149.85
6411 Delinquent Real Estate Taxes	480,302.31			480,302.31
6420 Delinquent Per Capita Taxes, Section 679	38,507.05			38,507.05
6451 Delinquent Act 511 Earned Income Taxes	(17,108.12)			(17,108.12)
6459 Delinquent Act 511 Taxes, Other Proportional Assessments	274,456.37			274,456.37
6500 Earnings on Investments	50,390.74			
6700 Revenues from LEA Activities	76,630.18			
6832 Federal IDEA Revenue Received as Pass Through	494,053.28			
6890 Other Revenue from Intermediary Sources	8,523.49			
6910 Rentals	1,700.00			
6920 Contributions and Donations from Private Sources	22,279.18			
6942 Summer School Tuition	735.00			
6944 Receipts from Other LEAs in Pennsylvania - Education	29,026.26			
6949 Other Tuition from Patrons	4,665.00			
6969 All Other Services Provided Other Governments	5,000.00			
6991 Refunds of a Prior Year Expenditure	147,065.64			
6999 Other Revenues Not Specified Above	33,313.03			
TOTAL Revenue from Local Sources	\$6,997,548.61			\$6,124,166.81

	Revenue Reported In Current Year			
Revenue from State Sources				
7111 Basic Education Funding-Formula	12,738,514.32			
7112 Basic Education Funding-Social Security	440,682.42			
7160 Tuition for Orphans Subsidy	25,523.11			
7250 Migratory Children	80.00			
7271 Special Education funds for School-Aged Pupils	1,756,187.90			
7292 Pre-K Counts	350,000.00			
7311 Pupil Transportation Subsidy	776,811.69			
7312 Nonpublic and Charter School Pupil Transportation Subsidy	106,260.00			
7320 Rental and Sinking Fund Payments / Building Reimbursement Subsidy	153,536.77			
7330 Health Services (Medical, Dental, Nurse, Act 25)	49,757.71			
7340 State Property Tax Reduction Allocation	351,639.27			
7369 Other Safe School Grants	37,444.13			
7505 Ready to Learn Block Grant	514,641.00			
7506 PAsmart Grants	34,999.00			
7810 State Share of Social Security and Medicare Taxes	226,613.26			
7820 State Share of Retirement Contributions	3,166,373.91			
TOTAL Revenue from State Sources	\$20,729,064.49			

	Revenue Reported In Current Year			
<u>Revenue from Federal Sources</u>				
8514 NCLB, Title I - Improving the Academic Achievement of the Disadvantaged	903,824.37			
8515 NCLB, Title II - Preparing, Training and Recruiting High Quality Teachers and Principals	179,856.00			
8517 NCLB, Title IV - 21St Century Schools	63,122.00			
8733 ARRA - Qualified Zone Academy Bonds (QZAB)	196,368.50			
8810 School-Based Access Medicaid Reimbursement Program (SBAP) Reimbursements (Access)	66,130.43			
8820 Medical Assistance Reimbursement for Administrative Claiming (Quarterly) Program	22,319.82			
TOTAL Revenue from Federal Sources	\$1,431,621.12			

	Revenue Reported In Current Year	
<u>Other Financing Sources</u>		
9290 Other Extended-Term Financing Proceeds	1,050,001.00	
TOTAL Other Financing Sources	\$1,050,001.00	
TOTAL FROM ALL SOURCES	\$30,208,235.22	\$6,124,166.81

LEA : 116496503 Shamokin Area SD

Printed 11/25/2020 9:18:19 AM

	<u>General Fund (10)</u>	<u>Student Sponsored Activity Fund (21)</u>	<u>Public Purpose Trust (27)</u>	<u>Other Compt Approved (28)</u>	<u>Athletic / Activity (29)</u>	<u>Capital Reserve (690, 1850) (31)</u>
6000 Revenue from Local Sources						
6111 Current Real Estate Taxes	3,017,519.33					
6114 Payments in Lieu of Current Taxes - State / Local	9,369.13					
6120 Current Per Capita Taxes, Section 679	33,867.50					
6141 Current Act 511 Per Capita Taxes	67,013.06					
6143 Current Act 511 Local Services Taxes	25,450.63					
6151 Current Act 511 Earned Income Taxes	1,456,903.82					
6152 Current Act 511 Occupation Taxes	413,089.80					
6153 Current Act 511 Real Estate Transfer Taxes	135,646.08					
6155 Current Act 511 Business Privilege Taxes	189,149.85					
6411 Delinquent Real Estate Taxes	480,302.31					
6420 Delinquent Per Capita Taxes, Section 679	38,507.05					
6451 Delinquent Act 511 Earned Income Taxes	(17,108.12)					
6459 Delinquent Act 511 Taxes, Other Proportional Assessments	274,456.37					
6500 Earnings on Investments	50,390.74					
6700 Revenues from LEA Activities	76,630.18					
6832 Federal IDEA Revenue Received as Pass Through	494,053.28					
6890 Other Revenue from Intermediary Sources	8,523.49					
6910 Rentals	1,700.00					
6920 Contributions and Donations from Private Sources	22,279.18					
6942 Summer School Tuition	735.00					
6944 Receipts from Other LEAs in Pennsylvania - Education	29,026.26					
6949 Other Tuition from Patrons	4,665.00					
6969 All Other Services Provided Other Governments	5,000.00					
6991 Refunds of a Prior Year Expenditure	147,065.64					
6999 Other Revenues Not Specified Above	33,313.03					
6000 Total Revenue from Local Sources	\$6,997,548.61					
7000 Revenue from State Sources						
7111 Basic Education Funding-Formula	12,738,514.32					
7112 Basic Education Funding-Social Security	440,682.42					
7160 Tuition for Orphans Subsidy	25,523.11					
7250 Migratory Children	80.00					
7271 Special Education funds for School-Aged Pupils	1,756,187.90					
7292 Pre-K Counts	350,000.00					
7311 Pupil Transportation Subsidy	776,811.69					
7312 Nonpublic and Charter School Pupil Transportation Subsidy	106,260.00					

LEA : 116496503 Shamokin Area SD

Printed 11/25/2020 9:18:19 AM

	Capital Reserve (1431) (32)	Other Capital Projects Fund (39)	Debt Service (40)	Permanent (90)	Total
6000 Revenue from Local Sources					
6111 Current Real Estate Taxes					3,017,519.33
6114 Payments in Lieu of Current Taxes - State / Local					9,369.13
6120 Current Per Capita Taxes, Section 679					33,867.50
6141 Current Act 511 Per Capita Taxes					67,013.06
6143 Current Act 511 Local Services Taxes					25,450.63
6151 Current Act 511 Earned Income Taxes					1,456,903.82
6152 Current Act 511 Occupation Taxes					413,089.80
6153 Current Act 511 Real Estate Transfer Taxes					135,646.08
6155 Current Act 511 Business Privilege Taxes					189,149.85
6411 Delinquent Real Estate Taxes					480,302.31
6420 Delinquent Per Capita Taxes, Section 679					38,507.05
6451 Delinquent Act 511 Earned Income Taxes					(17,108.12)
6459 Delinquent Act 511 Taxes, Other Proportional Assessments					274,456.37
6500 Earnings on Investments	12,899.86				63,290.60
6700 Revenues from LEA Activities					76,630.18
6832 Federal IDEA Revenue Received as Pass Through					494,053.28
6890 Other Revenue from Intermediary Sources					8,523.49
6910 Rentals					1,700.00
6920 Contributions and Donations from Private Sources					22,279.18
6942 Summer School Tuition					735.00
6944 Receipts from Other LEAs in Pennsylvania - Education					29,026.26
6949 Other Tuition from Patrons					4,665.00
6969 All Other Services Provided Other Governments					5,000.00
6991 Refunds of a Prior Year Expenditure	2,381.55				149,447.19
6999 Other Revenues Not Specified Above	125,000.00				158,313.03
6000 Total Revenue from Local Sources	\$140,281.41				\$7,137,830.02
7000 Revenue from State Sources					
7111 Basic Education Funding-Formula					12,738,514.32
7112 Basic Education Funding-Social Security					440,682.42
7160 Tuition for Orphans Subsidy					25,523.11
7250 Migratory Children					80.00
7271 Special Education funds for School-Aged Pupils					1,756,187.90
7292 Pre-K Counts					350,000.00
7311 Pupil Transportation Subsidy					776,811.69
7312 Nonpublic and Charter School Pupil Transportation Subsidy					106,260.00

LEA : 116496503 Shamokin Area SD

Printed 11/25/2020 9:18:19 AM

	<u>General Fund (10)</u>	<u>Student Sponsored Activity Fund (21)</u>	<u>Public Purpose Trust (27)</u>	<u>Other Compt Approved (28)</u>	<u>Athletic / Activity (29)</u>	<u>Capital Reserve (690, 1850) (31)</u>
7000 Revenue from State Sources						
7320 Rental and Sinking Fund Payments / Building Reimbursement Subsidy	153,536.77					
7330 Health Services (Medical, Dental, Nurse, Act 25)	49,757.71					
7340 State Property Tax Reduction Allocation	351,639.27					
7369 Other Safe School Grants	37,444.13					
7505 Ready to Learn Block Grant	514,641.00					
7506 PAsmart Grants	34,999.00					
7810 State Share of Social Security and Medicare Taxes	226,613.26					
7820 State Share of Retirement Contributions	3,166,373.91					
7000 Total Revenue from State Sources	\$20,729,064.49					
8000 Revenue from Federal Sources						
8514 NCLB, Title I - Improving the Academic Achievement of the Disadvantaged	903,824.37					
8515 NCLB, Title II - Preparing, Training and Recruiting High Quality Teachers and Principals	179,856.00					
8517 NCLB, Title IV - 21St Century Schools	63,122.00					
8733 ARRA - Qualified Zone Academy Bonds (QZAB)	196,368.50					
8810 School-Based Access Medicaid Reimbursement Program (SBAP) Reimbursements (Access)	66,130.43					
8820 Medical Assistance Reimbursement for Administrative Claiming (Quarterly) Program	22,319.82					
8000 Total Revenue from Federal Sources	\$1,431,621.12					
9000 Other Financing Sources						
9290 Other Extended-Term Financing Proceeds	1,050,001.00					
9000 Total Other Financing Sources	\$1,050,001.00					
Total From All Sources	\$30,208,235.22					

LEA : 116496503 Shamokin Area SD

Printed 11/25/2020 9:18:19 AM

	<u>Capital Reserve</u> <u>(1431) (32)</u>	<u>Other Capital</u> <u>Projects Fund (39)</u>	<u>Debt Service (40)</u>	<u>Permanent (90)</u>	<u>Total</u>
7000 Revenue from State Sources					
7320 Rental and Sinking Fund Payments / Building Reimbursement Subsidy					153,536.77
7330 Health Services (Medical, Dental, Nurse, Act 25)					49,757.71
7340 State Property Tax Reduction Allocation					351,639.27
7369 Other Safe School Grants					37,444.13
7505 Ready to Learn Block Grant					514,641.00
7506 PAsmart Grants					34,999.00
7810 State Share of Social Security and Medicare Taxes					226,613.26
7820 State Share of Retirement Contributions					3,166,373.91
7000 Total Revenue from State Sources					\$20,729,064.49
8000 Revenue from Federal Sources					
8514 NCLB, Title I - Improving the Academic Achievement of the Disadvantaged					903,824.37
8515 NCLB, Title II - Preparing, Training and Recruiting High Quality Teachers and Principals					179,856.00
8517 NCLB, Title IV - 21st Century Schools					63,122.00
8733 ARRA - Qualified Zone Academy Bonds (QZAB)					196,368.50
8810 School-Based Access Medicaid Reimbursement Program (SBAP) Reimbursements (Access)					66,130.43
8820 Medical Assistance Reimbursement for Administrative Claiming (Quarterly) Program					22,319.82
8000 Total Revenue from Federal Sources					\$1,431,621.12
9000 Other Financing Sources					
9290 Other Extended-Term Financing Proceeds					1,050,001.00
9000 Total Other Financing Sources					\$1,050,001.00
Total From All Sources	\$140,281.41				\$30,348,516.63

LEA : 116496503 Shamokin Area SD

Printed 11/25/2020 9:18:24 AM

	<u>General Fund (10)</u>	<u>Student Sponsored Activity Fund (21)</u>	<u>Public Purpose Trust (27)</u>	<u>Other Compt Approved (28)</u>	<u>Athletic / Activity (29)</u>	<u>Capital Reserve (690. 1850) (31)</u>
Revenue from Local Sources	6,997,548.61					
Revenue from State Sources	20,729,064.49					
Revenue from Federal Sources	1,431,621.12					
Other Financing Sources	1,050,001.00					
Total From All Sources	\$30,208,235.22					

LEA : 116496503 Shamokin Area SD

Printed 11/25/2020 9:18:24 AM

	<u>Capital Reserve (1431)</u> <u>(32)</u>	<u>Other Capital Projects</u> <u>Fund (39)</u>	<u>Debt Service (40)</u>	<u>Permanent (90)</u>	<u>Total</u>
Revenue from Local Sources	140,281.41				7,137,830.02
Revenue from State Sources					20,729,064.49
Revenue from Federal Sources					1,431,621.12
Other Financing Sources					1,050,001.00
Total From All Sources	\$140,281.41				\$30,348,516.63

LEA : 116496503 Shamokin Area SD

Printed 11/25/2020 9:18:29 AM

General Fund (10)	
1000 Instruction	<u>Total</u>
100 <u>Personnel Services – Salaries</u>	
100 Personnel Services – Salaries	9,011,975.47
Total Personnel Services – Salaries	\$9,011,975.47
200 <u>Personnel Services – Employee Benefits</u>	
210 Group Insurance – Contracted Provider	2,812,927.47
220 Social Security Contributions	669,746.80
230 PSERS Retirement Contributions	3,068,682.07
250 Unemployment Compensation	9,527.20
260 Workers' Compensation	81,113.24
270 Group Insurance – Self-Insurance	64,800.00
292 Health Savings Accounts	151,323.32
Total Personnel Services – Employee Benefits	\$6,858,120.10
300 <u>Purchased Professional and Technical Services</u>	
322 Professional Educational Services – Ius	644,688.40
323 Professional Educational Services – Other Educational Agencies	328,614.50
329 Professional Educational Services – Other	59,147.00
330 Other Professional Services	161,927.00
360 Employee Training and Development Services	15.00
Total Purchased Professional and Technical Services	\$1,194,391.90
400 <u>Purchased Property Services</u>	
430 Repairs and Maintenance Services	2,689.00
440 Rentals	7,790.35
490 Other Purchased Property Services	598.00
Total Purchased Property Services	\$11,077.35
500 <u>Other Purchased Services</u>	
510 Student Transportation Services	13,332.23
520 Insurance – General	2,583.60
530 Communications	820.11
550 Printing and Binding	465.08
561 Tuition To Other School Districts Within the State	159,986.16
562 Tuition To Pennsylvania Charter Schools	2,145,854.24
564 Tuition To Career and Technology Centers	933,629.24
567 Tuition To Approved Private Schools (APS) and PA Chartered Schools for the Deaf and Blind	20,475.70
568 Tuition To Private Residential Rehabilitative Institutions (PRRI) [In-State] and Detention Centers	373,303.74
569 Tuition – Other	156,430.00
580 Travel	877.95
594 IU Payment By Withholding for Institutionalized Children's Programs – Special Classes	330.14
Total Other Purchased Services	\$3,808,088.19
600 <u>Supplies</u>	
610 General Supplies	205,262.50
630 Food	3,656.00
640 Books and Periodicals	173,013.21
650 Supplies & Fees – Technology Related	96,933.70

LEA : 116496503 Shamokin Area SD

Printed 11/25/2020 9:18:29 AM

General Fund (10)

1000 Instruction		<u>Total</u>
Total Supplies		\$478,865.41
700 <u>Property</u>		
756 Capitalized Technology Equipment – Original		25,663.00
762 Capitalized Equipment - Replacement		2,692.88
Total Property		\$28,355.88
800 <u>Other Objects</u>		
810 Dues and Fees		1,558.77
Total Other Objects		\$1,558.77
Total 1000 Instruction		\$21,392,433.07

LEA : 116496503 Shamokin Area SD

Printed 11/25/2020 9:18:29 AM

General Fund (10)

1100 Regular Programs – Elementary / Secondary	Elementary	Secondary	Federal	Total
100 Personnel Services – Salaries				
100 Personnel Services – Salaries	2,822,129.83	2,936,189.58	638,824.43	6,397,143.84
Total Personnel Services – Salaries	\$2,822,129.83	\$2,936,189.58	\$638,824.43	\$6,397,143.84
200 Personnel Services – Employee Benefits				
210 Group Insurance – Contracted Provider	963,411.23	848,519.70	186,317.56	1,998,248.49
220 Social Security Contributions	209,172.13	218,599.35	48,027.56	475,799.04
230 PSERS Retirement Contributions	958,469.98	996,915.89	218,442.53	2,173,828.40
250 Unemployment Compensation		9,527.20		9,527.20
260 Workers' Compensation	25,400.02	26,426.07	5,749.30	57,575.39
270 Group Insurance – Self-Insurance	44,700.00	14,100.00		58,800.00
292 Health Savings Accounts	45,923.61	42,037.47	9,350.00	97,311.08
Total Personnel Services – Employee Benefits	\$2,247,076.97	\$2,156,125.68	\$467,886.95	\$4,871,089.60
300 Purchased Professional and Technical Services				
323 Professional Educational Services – Other Educational Agencies	39,980.00	285,646.50		325,626.50
329 Professional Educational Services – Other	48,110.16	2,036.84		50,147.00
Total Purchased Professional and Technical Services	\$88,090.16	\$287,683.34		\$375,773.50
400 Purchased Property Services				
430 Repairs and Maintenance Services	467.00	2,222.00		2,689.00
440 Rentals	2,138.44	248.93		2,387.37
Total Purchased Property Services	\$2,605.44	\$2,470.93		\$5,076.37
500 Other Purchased Services				
510 Student Transportation Services	495.57	6,038.64		6,534.21
550 Printing and Binding	465.08			465.08
561 Tuition To Other School Districts Within the State		46,785.15		46,785.15
562 Tuition To Pennsylvania Charter Schools	190,020.75	1,395,517.74		1,585,538.49
568 Tuition To Private Residential Rehabilitative Institutions (PRRI) [In-State] and Detention Centers	3,031.53	9,261.52		12,293.05
580 Travel	346.80		324.62	671.42
Total Other Purchased Services	\$194,359.73	\$1,457,603.05	\$324.62	\$1,652,287.40
600 Supplies				
610 General Supplies	77,528.71	62,645.29	9,627.80	149,801.80
640 Books and Periodicals	117,548.47	35,891.91	10,461.59	163,901.97
650 Supplies & Fees – Technology Related	18,501.69	64,052.79	703.00	83,257.48
Total Supplies	\$213,578.87	\$162,589.99	\$20,792.39	\$396,961.25
800 Other Objects				
810 Dues and Fees	95.40	344.60		440.00
Total Other Objects	\$95.40	\$344.60		\$440.00
Total 1100 Regular Programs – Elementary / Secondary	\$5,567,936.40	\$7,003,007.17	\$1,127,828.39	\$13,698,771.96

LEA : 116496503 Shamokin Area SD

Printed 11/25/2020 9:18:29 AM

General Fund (10)

1110 Regular Programs	Elementary	Secondary	Federal	Total
100 Personnel Services – Salaries				
100 Personnel Services – Salaries	2,822,129.83	2,936,189.58	44,818.41	5,803,137.82
Total Personnel Services – Salaries	\$2,822,129.83	\$2,936,189.58	\$44,818.41	\$5,803,137.82
200 Personnel Services – Employee Benefits				
210 Group Insurance – Contracted Provider	963,411.23	848,519.70	1,511.24	1,813,442.17
220 Social Security Contributions	209,172.13	218,599.35	3,429.32	431,200.80
230 PSERS Retirement Contributions	958,469.98	996,915.89	15,045.49	1,970,431.36
250 Unemployment Compensation		9,527.20		9,527.20
260 Workers' Compensation	25,400.02	26,426.07	403.45	52,229.54
270 Group Insurance – Self-Insurance	44,700.00	14,100.00		58,800.00
292 Health Savings Accounts	45,923.61	42,037.47		87,961.08
Total Personnel Services – Employee Benefits	\$2,247,076.97	\$2,156,125.68	\$20,389.50	\$4,423,592.15
300 Purchased Professional and Technical Services				
323 Professional Educational Services – Other Educational Agencies	39,980.00	285,646.50		325,626.50
329 Professional Educational Services – Other	48,110.16	2,036.84		50,147.00
Total Purchased Professional and Technical Services	\$88,090.16	\$287,683.34		\$375,773.50
400 Purchased Property Services				
430 Repairs and Maintenance Services	467.00	2,222.00		2,689.00
440 Rentals	2,138.44	248.93		2,387.37
Total Purchased Property Services	\$2,605.44	\$2,470.93		\$5,076.37
500 Other Purchased Services				
510 Student Transportation Services	495.57	6,038.64		6,534.21
550 Printing and Binding	465.08			465.08
561 Tuition To Other School Districts Within the State		46,785.15		46,785.15
562 Tuition To Pennsylvania Charter Schools	190,020.75	1,395,517.74		1,585,538.49
568 Tuition To Private Residential Rehabilitative Institutions (PRRI) [In-State] and Detention Centers	3,031.53	9,261.52		12,293.05
580 Travel	346.80		324.62	671.42
Total Other Purchased Services	\$194,359.73	\$1,457,603.05	\$324.62	\$1,652,287.40
600 Supplies				
610 General Supplies	77,528.71	62,645.29	1,534.06	141,708.06
640 Books and Periodicals	117,548.47	35,891.91	4,485.24	157,925.62
650 Supplies & Fees – Technology Related	18,501.69	64,052.79		82,554.48
Total Supplies	\$213,578.87	\$162,589.99	\$6,019.30	\$382,188.16
800 Other Objects				
810 Dues and Fees	95.40	344.60		440.00
Total Other Objects	\$95.40	\$344.60		\$440.00
Total 1110 Regular Programs	\$5,567,936.40	\$7,003,007.17	\$71,551.83	\$12,642,495.40

LEA : 116496503 Shamokin Area SD

Printed 11/25/2020 9:18:29 AM

General Fund (10)				
1190 Federally-Funded Regular Programs	<u>Elementary</u>	<u>Secondary</u>	<u>Federal</u>	<u>Total</u>
100 <u>Personnel Services – Salaries</u>				
100 Personnel Services – Salaries			594,006.02	594,006.02
Total Personnel Services – Salaries			\$594,006.02	\$594,006.02
200 <u>Personnel Services – Employee Benefits</u>				
210 Group Insurance – Contracted Provider			184,806.32	184,806.32
220 Social Security Contributions			44,598.24	44,598.24
230 PSERS Retirement Contributions			203,397.04	203,397.04
260 Workers' Compensation			5,345.85	5,345.85
292 Health Savings Accounts			9,350.00	9,350.00
Total Personnel Services – Employee Benefits			\$447,497.45	\$447,497.45
600 <u>Supplies</u>				
610 General Supplies			8,093.74	8,093.74
640 Books and Periodicals			5,976.35	5,976.35
650 Supplies & Fees – Technology Related			703.00	703.00
Total Supplies			\$14,773.09	\$14,773.09
Total 1190 Federally-Funded Regular Programs			\$1,056,276.56	\$1,056,276.56

LEA : 116496503 Shamokin Area SD

Printed 11/25/2020 9:18:29 AM

General Fund (10)				
1200 Special Programs – Elementary / Secondary	<u>Elementary</u>	<u>Secondary</u>	<u>Federal</u>	<u>Total</u>
100 <u>Personnel Services – Salaries</u>				
100 Personnel Services – Salaries	842,472.97	825,505.72	323,881.12	1,991,859.81
Total Personnel Services – Salaries	\$842,472.97	\$825,505.72	\$323,881.12	\$1,991,859.81
200 <u>Personnel Services – Employee Benefits</u>				
210 Group Insurance – Contracted Provider	225,406.44	315,287.69	97,442.80	638,136.93
220 Social Security Contributions	62,178.55	61,062.96	23,959.09	147,200.60
230 PSERS Retirement Contributions	286,017.54	282,142.49	110,921.92	679,081.95
260 Workers' Compensation	7,521.35	7,433.50	2,915.34	17,870.19
270 Group Insurance – Self-Insurance	6,000.00			6,000.00
292 Health Savings Accounts	18,605.50	19,266.00	5,220.00	43,091.50
Total Personnel Services – Employee Benefits	\$605,729.38	\$685,192.64	\$240,459.15	\$1,531,381.17
300 <u>Purchased Professional and Technical Services</u>				
322 Professional Educational Services – Ius	233,167.85	335,970.38		569,138.23
329 Professional Educational Services – Other		9,000.00		9,000.00
330 Other Professional Services	161,327.00	600.00		161,927.00
Total Purchased Professional and Technical Services	\$394,494.85	\$345,570.38		\$740,065.23
400 <u>Purchased Property Services</u>				
440 Rentals	5,454.54	(51.56)		5,402.98
490 Other Purchased Property Services		598.00		598.00
Total Purchased Property Services	\$5,454.54	\$546.44		\$6,000.98
500 <u>Other Purchased Services</u>				
510 Student Transportation Services	6,180.35	544.68		6,725.03
530 Communications		520.11		520.11
561 Tuition To Other School Districts Within the State	8,474.62	49,799.76		58,274.38
562 Tuition To Pennsylvania Charter Schools	292,549.15	267,766.60		560,315.75
567 Tuition To Approved Private Schools (APS) and PA Chartered Schools for the Deaf and Blind		20,475.70		20,475.70
568 Tuition To Private Residential Rehabilitative Institutions (PRRI) [In-State] and Detention Centers	45,290.35	225,359.80		270,650.15
569 Tuition – Other	148,600.00	7,830.00		156,430.00
580 Travel	161.98			161.98
594 IU Payment By Withholding for Institutionalized Children's Programs – Special Classes		330.14		330.14
Total Other Purchased Services	\$501,256.45	\$572,626.79		\$1,073,883.24
600 <u>Supplies</u>				
610 General Supplies	3,370.08	3,822.63	3,291.42	10,484.13
640 Books and Periodicals	515.48	519.59	776.67	1,811.74
650 Supplies & Fees – Technology Related	3,094.26	4,872.26		7,966.52
Total Supplies	\$6,979.82	\$9,214.48	\$4,068.09	\$20,262.39
700 <u>Property</u>				
756 Capitalized Technology Equipment – Original			25,663.00	25,663.00
Total Property			\$25,663.00	\$25,663.00
800 <u>Other Objects</u>				
810 Dues and Fees	596.00			596.00

LEA : 116496503 Shamokin Area SD

Printed 11/25/2020 9:18:29 AM

General Fund (10)

1200 Special Programs – Elementary / Secondary	<u>Elementary</u>	<u>Secondary</u>	<u>Federal</u>	<u>Total</u>
Total Other Objects	\$596.00			\$596.00
Total 1200 Special Programs – Elementary / Secondary	\$2,356,984.01	\$2,438,656.45	\$594,071.36	\$5,389,711.82

LEA : 116496503 Shamokin Area SD

Printed 11/25/2020 9:18:29 AM

General Fund (10)				
1210 Life Skills Support	<u>Elementary</u>	<u>Secondary</u>	<u>Federal</u>	<u>Total</u>
100 <u>Personnel Services – Salaries</u>				
100 Personnel Services – Salaries	146,563.53	178,991.67	129,537.33	455,092.53
Total Personnel Services – Salaries	\$146,563.53	\$178,991.67	\$129,537.33	\$455,092.53
200 <u>Personnel Services – Employee Benefits</u>				
210 Group Insurance – Contracted Provider	68,841.78	70,767.47	29,823.36	169,432.61
220 Social Security Contributions	10,727.86	13,152.14	9,683.34	33,563.34
230 PSERS Retirement Contributions	50,256.47	61,463.42	44,363.65	156,083.54
260 Workers' Compensation	1,318.99	1,614.59	1,165.96	4,099.54
292 Health Savings Accounts	4,900.00	4,900.00	1,920.00	11,720.00
Total Personnel Services – Employee Benefits	\$136,045.10	\$151,897.62	\$86,956.31	\$374,899.03
300 <u>Purchased Professional and Technical Services</u>				
322 Professional Educational Services – lus		215,781.41		215,781.41
Total Purchased Professional and Technical Services		\$215,781.41		\$215,781.41
500 <u>Other Purchased Services</u>				
510 Student Transportation Services	92.64			92.64
Total Other Purchased Services	\$92.64			\$92.64
600 <u>Supplies</u>				
610 General Supplies	235.52	672.40		907.92
650 Supplies & Fees – Technology Related		2,335.77		2,335.77
Total Supplies	\$235.52	\$3,008.17		\$3,243.69
Total 1210 Life Skills Support	\$282,936.79	\$549,678.87	\$216,493.64	\$1,049,109.30

LEA : 116496503 Shamokin Area SD

Printed 11/25/2020 9:18:29 AM

General Fund (10)

1220 Sensory Support	Elementary	Secondary	Federal	Total
100 <u>Personnel Services – Salaries</u>				
100 Personnel Services – Salaries	123,676.90	36,755.10		160,432.00
Total Personnel Services – Salaries	\$123,676.90	\$36,755.10		\$160,432.00
200 <u>Personnel Services – Employee Benefits</u>				
210 Group Insurance – Contracted Provider		34,057.64		34,057.64
220 Social Security Contributions	9,137.06	2,738.29		11,875.35
230 PSERS Retirement Contributions	42,011.14	12,603.36		54,614.50
260 Workers' Compensation	1,113.06	330.78		1,443.84
292 Health Savings Accounts	840.00	810.00		1,650.00
Total Personnel Services – Employee Benefits	\$53,101.26	\$50,540.07		\$103,641.33
300 <u>Purchased Professional and Technical Services</u>				
322 Professional Educational Services – lus	85,683.82	56,457.85		142,141.67
Total Purchased Professional and Technical Services	\$85,683.82	\$56,457.85		\$142,141.67
400 <u>Purchased Property Services</u>				
440 Rentals	2,727.27			2,727.27
Total Purchased Property Services	\$2,727.27			\$2,727.27
500 <u>Other Purchased Services</u>				
568 Tuition To Private Residential Rehabilitative Institutions (PRRI) [In-State] and Detention Centers	880.00			880.00
Total Other Purchased Services	\$880.00			\$880.00
600 <u>Supplies</u>				
610 General Supplies	800.61			800.61
Total Supplies	\$800.61			\$800.61
800 <u>Other Objects</u>				
810 Dues and Fees	596.00			596.00
Total Other Objects	\$596.00			\$596.00
Total 1220 Sensory Support	\$267,465.86	\$143,753.02		\$411,218.88

LEA : 116496503 Shamokin Area SD

Printed 11/25/2020 9:18:29 AM

General Fund (10)

1230 Emotional Support	Elementary	Secondary	Federal	Total
100 <u>Personnel Services – Salaries</u>				
100 Personnel Services – Salaries	239,553.96	164,956.99	105,583.00	510,093.95
Total Personnel Services – Salaries	\$239,553.96	\$164,956.99	\$105,583.00	\$510,093.95
200 <u>Personnel Services – Employee Benefits</u>				
210 Group Insurance – Contracted Provider	66,835.64	57,226.68	30,311.78	154,374.10
220 Social Security Contributions	17,732.29	12,084.99	7,608.60	37,425.88
230 PSERS Retirement Contributions	82,061.02	56,508.88	36,122.10	174,692.00
260 Workers' Compensation	2,156.16	1,484.59	950.36	4,591.11
292 Health Savings Accounts	7,760.00	2,190.00	1,650.00	11,600.00
Total Personnel Services – Employee Benefits	\$176,545.11	\$129,495.14	\$76,642.84	\$382,683.09
300 <u>Purchased Professional and Technical Services</u>				
322 Professional Educational Services – lus		10,274.12		10,274.12
330 Other Professional Services	161,327.00			161,327.00
Total Purchased Professional and Technical Services	\$161,327.00	\$10,274.12		\$171,601.12
500 <u>Other Purchased Services</u>				
561 Tuition To Other School Districts Within the State	7,415.50	48,489.12		55,904.62
568 Tuition To Private Residential Rehabilitative Institutions (PRRI) [In-State] and Detention Centers	1,395.00	132,967.80		134,362.80
569 Tuition – Other	127,540.00	7,830.00		135,370.00
580 Travel	161.98			161.98
Total Other Purchased Services	\$136,512.48	\$189,286.92		\$325,799.40
600 <u>Supplies</u>				
610 General Supplies	1,896.87	1,537.42	2,736.20	6,170.49
640 Books and Periodicals	410.03			410.03
650 Supplies & Fees – Technology Related	262.50			262.50
Total Supplies	\$2,569.40	\$1,537.42	\$2,736.20	\$6,843.02
Total 1230 Emotional Support	\$716,507.95	\$495,550.59	\$184,962.04	\$1,397,020.58

LEA : 116496503 Shamokin Area SD

Printed 11/25/2020 9:18:29 AM

General Fund (10)

1240 Academic Support	Elementary	Secondary	Federal	Total
100 Personnel Services – Salaries				
100 Personnel Services – Salaries	229,562.10	394,005.25	364.84	623,932.19
Total Personnel Services – Salaries	\$229,562.10	\$394,005.25	\$364.84	\$623,932.19
200 Personnel Services – Employee Benefits				
210 Group Insurance – Contracted Provider	80,696.88	135,946.36		216,643.24
220 Social Security Contributions	16,786.52	29,264.01	27.91	46,078.44
230 PSERS Retirement Contributions	76,329.89	134,148.44	125.10	210,603.43
260 Workers' Compensation	2,005.20	3,546.44	3.28	5,554.92
270 Group Insurance – Self-Insurance	6,000.00			6,000.00
292 Health Savings Accounts	3,755.50	8,666.00		12,421.50
Total Personnel Services – Employee Benefits	\$185,573.99	\$311,571.25	\$156.29	\$497,301.53
300 Purchased Professional and Technical Services				
322 Professional Educational Services – Ius	2,127.14	1,434.41		3,561.55
329 Professional Educational Services – Other		9,000.00		9,000.00
330 Other Professional Services		600.00		600.00
Total Purchased Professional and Technical Services	\$2,127.14	\$11,034.41		\$13,161.55
400 Purchased Property Services				
440 Rentals		(51.56)		(51.56)
490 Other Purchased Property Services		598.00		598.00
Total Purchased Property Services		\$546.44		\$546.44
500 Other Purchased Services				
510 Student Transportation Services	187.71			187.71
530 Communications		520.11		520.11
561 Tuition To Other School Districts Within the State		1,310.64		1,310.64
562 Tuition To Pennsylvania Charter Schools	292,549.15	267,766.60		560,315.75
568 Tuition To Private Residential Rehabilitative Institutions (PRRI) [In-State] and Detention Centers	1,639.52	10,565.00		12,204.52
Total Other Purchased Services	\$294,376.38	\$280,162.35		\$574,538.73
600 Supplies				
610 General Supplies	368.00	906.56	256.22	1,530.78
640 Books and Periodicals		519.59	776.67	1,296.26
650 Supplies & Fees – Technology Related	2,831.76	2,536.49		5,368.25
Total Supplies	\$3,199.76	\$3,962.64	\$1,032.89	\$8,195.29
700 Property				
756 Capitalized Technology Equipment– Original			25,663.00	25,663.00
Total Property			\$25,663.00	\$25,663.00
Total 1240 Academic Support	\$714,839.37	\$1,001,282.34	\$27,217.02	\$1,743,338.73

LEA : 116496503 Shamokin Area SD

Printed 11/25/2020 9:18:29 AM

General Fund (10)

1241 Learning Support – Public	Elementary	Secondary	Federal	Total
100 Personnel Services – Salaries				
100 Personnel Services – Salaries	229,562.10	391,207.53	364.84	621,134.47
Total Personnel Services – Salaries	\$229,562.10	\$391,207.53	\$364.84	\$621,134.47
200 Personnel Services – Employee Benefits				
210 Group Insurance – Contracted Provider	80,696.88	135,852.02		216,548.90
220 Social Security Contributions	16,786.52	29,049.94	27.91	45,864.37
230 PSERS Retirement Contributions	76,329.89	133,209.25	125.10	209,664.24
260 Workers' Compensation	2,005.20	3,521.26	3.28	5,529.74
270 Group Insurance – Self-Insurance	6,000.00			6,000.00
292 Health Savings Accounts	3,755.50	8,666.00		12,421.50
Total Personnel Services – Employee Benefits	\$185,573.99	\$310,298.47	\$156.29	\$496,028.75
300 Purchased Professional and Technical Services				
322 Professional Educational Services – Ius	2,127.14	1,434.41		3,561.55
329 Professional Educational Services – Other		9,000.00		9,000.00
330 Other Professional Services		600.00		600.00
Total Purchased Professional and Technical Services	\$2,127.14	\$11,034.41		\$13,161.55
400 Purchased Property Services				
440 Rentals		(51.56)		(51.56)
490 Other Purchased Property Services		598.00		598.00
Total Purchased Property Services		\$546.44		\$546.44
500 Other Purchased Services				
510 Student Transportation Services	187.71			187.71
530 Communications		520.11		520.11
561 Tuition To Other School Districts Within the State		1,310.64		1,310.64
562 Tuition To Pennsylvania Charter Schools	292,549.15	267,766.60		560,315.75
568 Tuition To Private Residential Rehabilitative Institutions (PRRI) [In-State] and Detention Centers	378.00	9,292.00		9,670.00
Total Other Purchased Services	\$293,114.86	\$278,889.35		\$572,004.21
600 Supplies				
610 General Supplies	368.00	906.56	256.22	1,530.78
640 Books and Periodicals		519.59	776.67	1,296.26
650 Supplies & Fees – Technology Related	2,831.76	2,536.49		5,368.25
Total Supplies	\$3,199.76	\$3,962.64	\$1,032.89	\$8,195.29
700 Property				
756 Capitalized Technology Equipment– Original			25,663.00	25,663.00
Total Property			\$25,663.00	\$25,663.00
Total 1241 Learning Support – Public	\$713,577.85	\$995,938.84	\$27,217.02	\$1,736,733.71

LEA : 116496503 Shamokin Area SD

Printed 11/25/2020 9:18:29 AM

General Fund (10)

1242 Learning Support – PRRI

500 Other Purchased Services

	<u>Elementary</u>	<u>Secondary</u>	<u>Federal</u>	<u>Total</u>
568 Tuition To Private Residential Rehabilitative Institutions (PRRI) [In-State] and Detention Centers	1,261.52	1,273.00		2,534.52
Total Other Purchased Services	\$1,261.52	\$1,273.00		\$2,534.52
Total 1242 Learning Support – PRRI	\$1,261.52	\$1,273.00		\$2,534.52

LEA : 116496503 Shamokin Area SD

Printed 11/25/2020 9:18:29 AM

General Fund (10)

1243 Gifted Support

	Elementary	Secondary	Federal	Total
100 Personnel Services – Salaries				
100 Personnel Services – Salaries		2,797.72		2,797.72
Total Personnel Services – Salaries		\$2,797.72		\$2,797.72
200 Personnel Services – Employee Benefits				
210 Group Insurance – Contracted Provider		94.34		94.34
220 Social Security Contributions		214.07		214.07
230 PSERS Retirement Contributions		939.19		939.19
260 Workers' Compensation		25.18		25.18
Total Personnel Services – Employee Benefits		\$1,272.78		\$1,272.78
Total 1243 Gifted Support		\$4,070.50		\$4,070.50

LEA : 116496503 Shamokin Area SD

Printed 11/25/2020 9:18:29 AM

General Fund (10)

1260 Physical Support

	<u>Elementary</u>	<u>Secondary</u>	<u>Federal</u>	<u>Total</u>
300 <u>Purchased Professional and Technical Services</u>				
322 Professional Educational Services – lus	3,810.90			3,810.90
Total Purchased Professional and Technical Services	\$3,810.90			\$3,810.90
Total 1260 Physical Support	\$3,810.90			\$3,810.90

LEA : 116496503 Shamokin Area SD

Printed 11/25/2020 9:18:29 AM

General Fund (10)				
1270 Multi-Handicapped Support	<u>Elementary</u>	<u>Secondary</u>	<u>Federal</u>	<u>Total</u>
100 <u>Personnel Services – Salaries</u>				
100 Personnel Services – Salaries	103,116.48	50,796.71	88,395.95	242,309.14
Total Personnel Services – Salaries	\$103,116.48	\$50,796.71	\$88,395.95	\$242,309.14
200 <u>Personnel Services – Employee Benefits</u>				
210 Group Insurance – Contracted Provider	9,032.14	17,289.54	37,307.66	63,629.34
220 Social Security Contributions	7,794.82	3,823.53	6,639.24	18,257.59
230 PSERS Retirement Contributions	35,359.02	17,418.39	30,311.07	83,088.48
260 Workers' Compensation	927.94	457.10	795.74	2,180.78
292 Health Savings Accounts	1,350.00	2,700.00	1,650.00	5,700.00
Total Personnel Services – Employee Benefits	\$54,463.92	\$41,688.56	\$76,703.71	\$172,856.19
300 <u>Purchased Professional and Technical Services</u>				
322 Professional Educational Services – lus	56,284.13	11,330.33		67,614.46
Total Purchased Professional and Technical Services	\$56,284.13	\$11,330.33		\$67,614.46
400 <u>Purchased Property Services</u>				
440 Rentals	2,727.27			2,727.27
Total Purchased Property Services	\$2,727.27			\$2,727.27
500 <u>Other Purchased Services</u>				
510 Student Transportation Services		544.68		544.68
Total Other Purchased Services		\$544.68		\$544.68
600 <u>Supplies</u>				
610 General Supplies	69.08	706.25	299.00	1,074.33
Total Supplies	\$69.08	\$706.25	\$299.00	\$1,074.33
Total 1270 Multi-Handicapped Support	\$216,660.88	\$105,066.53	\$165,398.66	\$487,126.07

LEA : 116496503 Shamokin Area SD

Printed 11/25/2020 9:18:29 AM

General Fund (10)				
1290 Special Programs - Other Support	<u>Elementary</u>	<u>Secondary</u>	<u>Federal</u>	<u>Total</u>
300 <u>Purchased Professional and Technical Services</u>				
322 Professional Educational Services – Ius	85,261.86	40,692.26		125,954.12
Total Purchased Professional and Technical Services	\$85,261.86	\$40,692.26		\$125,954.12
500 <u>Other Purchased Services</u>				
510 Student Transportation Services	5,900.00			5,900.00
561 Tuition To Other School Districts Within the State	1,059.12			1,059.12
567 Tuition To Approved Private Schools (APS) and PA Chartered Schools for the Deaf and Blind		20,475.70		20,475.70
568 Tuition To Private Residential Rehabilitative Institutions (PRRI) [In-State] and Detention Centers	41,375.83	81,827.00		123,202.83
569 Tuition – Other	21,060.00			21,060.00
594 IU Payment By Withholding for Institutionalized Children's Programs – Special Classes		330.14		330.14
Total Other Purchased Services	\$69,394.95	\$102,632.84		\$172,027.79
600 <u>Supplies</u>				
640 Books and Periodicals	105.45			105.45
Total Supplies	\$105.45			\$105.45
Total 1290 Special Programs - Other Support	\$154,762.26	\$143,325.10		\$298,087.36

LEA : 116496503 Shamokin Area SD

Printed 11/25/2020 9:18:29 AM

General Fund (10)

1300 Vocational Education	Elementary	Secondary	Federal	Total
100 <u>Personnel Services – Salaries</u>				
100 Personnel Services – Salaries		272,076.82		272,076.82
Total Personnel Services – Salaries		\$272,076.82		\$272,076.82
200 <u>Personnel Services – Employee Benefits</u>				
210 Group Insurance – Contracted Provider		78,845.81		78,845.81
220 Social Security Contributions		19,927.10		19,927.10
230 PSERS Retirement Contributions		93,185.53		93,185.53
260 Workers' Compensation		2,448.85		2,448.85
292 Health Savings Accounts		3,819.00		3,819.00
Total Personnel Services – Employee Benefits		\$198,226.29		\$198,226.29
500 <u>Other Purchased Services</u>				
510 Student Transportation Services		72.99		72.99
564 Tuition To Career and Technology Centers		933,629.24		933,629.24
580 Travel		44.55		44.55
Total Other Purchased Services		\$933,746.78		\$933,746.78
600 <u>Supplies</u>				
610 General Supplies		19,842.20		19,842.20
640 Books and Periodicals		6,000.00		6,000.00
650 Supplies & Fees – Technology Related		3,005.70		3,005.70
Total Supplies		\$28,847.90		\$28,847.90
700 <u>Property</u>				
762 Capitalized Equipment - Replacement		2,692.88		2,692.88
Total Property		\$2,692.88		\$2,692.88
Total 1300 Vocational Education		\$1,435,590.67		\$1,435,590.67

LEA : 116496503 Shamokin Area SD

Printed 11/25/2020 9:18:29 AM

General Fund (10)

1400 Other Instructional Programs – Elementary / Secondary	Elementary	Secondary	Federal	Total
100 <u>Personnel Services – Salaries</u>				
100 Personnel Services – Salaries		117,860.46	21,868.75	139,729.21
Total Personnel Services – Salaries		\$117,860.46	\$21,868.75	\$139,729.21
200 <u>Personnel Services – Employee Benefits</u>				
210 Group Insurance – Contracted Provider		51,570.10		51,570.10
220 Social Security Contributions		8,780.55	1,660.86	10,441.41
230 PSERS Retirement Contributions		40,414.34	7,498.81	47,913.15
260 Workers' Compensation		1,060.69	196.94	1,257.63
292 Health Savings Accounts		4,378.03	243.71	4,621.74
Total Personnel Services – Employee Benefits		\$106,203.71	\$9,600.32	\$115,804.03
300 <u>Purchased Professional and Technical Services</u>				
322 Professional Educational Services – lus		38,044.39		38,044.39
323 Professional Educational Services – Other Educational Agencies		2,988.00		2,988.00
Total Purchased Professional and Technical Services		\$41,032.39		\$41,032.39
500 <u>Other Purchased Services</u>				
561 Tuition To Other School Districts Within the State		54,926.63		54,926.63
568 Tuition To Private Residential Rehabilitative Institutions (PRRI) [In-State] and Detention Centers	11,340.00	79,020.54		90,360.54
Total Other Purchased Services	\$11,340.00	\$133,947.17		\$145,287.17
600 <u>Supplies</u>				
650 Supplies & Fees – Technology Related		1,906.00		1,906.00
Total Supplies		\$1,906.00		\$1,906.00
800 <u>Other Objects</u>				
810 Dues and Fees		522.77		522.77
Total Other Objects		\$522.77		\$522.77
Total 1400 Other Instructional Programs – Elementary / Secondary	\$11,340.00	\$401,472.50	\$31,469.07	\$444,281.57

LEA : 116496503 Shamokin Area SD

Printed 11/25/2020 9:18:29 AM

General Fund (10)				
1420 Summer School	<u>Elementary</u>	<u>Secondary</u>	<u>Federal</u>	<u>Total</u>
100 <u>Personnel Services – Salaries</u>				
100 Personnel Services – Salaries		1,914.74		1,914.74
Total Personnel Services – Salaries		\$1,914.74		\$1,914.74
200 <u>Personnel Services – Employee Benefits</u>				
220 Social Security Contributions		146.52		146.52
230 PSERS Retirement Contributions		656.56		656.56
260 Workers’ Compensation		17.23		17.23
Total Personnel Services – Employee Benefits		\$820.31		\$820.31
Total 1420 Summer School		\$2,735.05		\$2,735.05

LEA : 116496503 Shamokin Area SD

Printed 11/25/2020 9:18:29 AM

General Fund (10)

1430 Homebound Instruction	<u>Elementary</u>	<u>Secondary</u>	<u>Federal</u>	<u>Total</u>
100 <u>Personnel Services – Salaries</u>				
100 Personnel Services – Salaries		925.00		925.00
Total Personnel Services – Salaries		\$925.00		\$925.00
200 <u>Personnel Services – Employee Benefits</u>				
220 Social Security Contributions		69.42		69.42
230 PSERS Retirement Contributions		317.19		317.19
260 Workers’ Compensation		8.33		8.33
Total Personnel Services – Employee Benefits		\$394.94		\$394.94
Total 1430 Homebound Instruction		\$1,319.94		\$1,319.94

LEA : 116496503 Shamokin Area SD

Printed 11/25/2020 9:18:29 AM

General Fund (10)

1440 Alternative Regular Education Programs	Elementary	Secondary	Federal	Total
100 <u>Personnel Services – Salaries</u>				
100 Personnel Services – Salaries		115,020.72		115,020.72
Total Personnel Services – Salaries		\$115,020.72		\$115,020.72
200 <u>Personnel Services – Employee Benefits</u>				
210 Group Insurance – Contracted Provider		51,570.10		51,570.10
220 Social Security Contributions		8,564.61		8,564.61
230 PSERS Retirement Contributions		39,440.59		39,440.59
260 Workers' Compensation		1,035.13		1,035.13
292 Health Savings Accounts		4,378.03		4,378.03
Total Personnel Services – Employee Benefits		\$104,988.46		\$104,988.46
300 <u>Purchased Professional and Technical Services</u>				
322 Professional Educational Services – Ius		38,044.39		38,044.39
323 Professional Educational Services – Other Educational Agencies		2,988.00		2,988.00
Total Purchased Professional and Technical Services		\$41,032.39		\$41,032.39
500 <u>Other Purchased Services</u>				
561 Tuition To Other School Districts Within the State		54,926.63		54,926.63
568 Tuition To Private Residential Rehabilitative Institutions (PRRI) [In-State] and Detention Centers	11,340.00	79,020.54		90,360.54
Total Other Purchased Services	\$11,340.00	\$133,947.17		\$145,287.17
600 <u>Supplies</u>				
650 Supplies & Fees – Technology Related		1,906.00		1,906.00
Total Supplies		\$1,906.00		\$1,906.00
800 <u>Other Objects</u>				
810 Dues and Fees		522.77		522.77
Total Other Objects		\$522.77		\$522.77
Total 1440 Alternative Regular Education Programs	\$11,340.00	\$397,417.51		\$408,757.51

LEA : 116496503 Shamokin Area SD

Printed 11/25/2020 9:18:29 AM

General Fund (10)				
1441 Adjudicated / Court-Placed Programs	<u>Elementary</u>	<u>Secondary</u>	<u>Federal</u>	<u>Total</u>
300 <u>Purchased Professional and Technical Services</u>				
322 Professional Educational Services – Ius		38,044.39		38,044.39
Total Purchased Professional and Technical Services		\$38,044.39		\$38,044.39
500 <u>Other Purchased Services</u>				
561 Tuition To Other School Districts Within the State		51,581.73		51,581.73
568 Tuition To Private Residential Rehabilitative Institutions (PRRI) [In-State] and Detention Centers		6,490.34		6,490.34
Total Other Purchased Services		\$58,072.07		\$58,072.07
800 <u>Other Objects</u>				
810 Dues and Fees		122.77		122.77
Total Other Objects		\$122.77		\$122.77
Total 1441 Adjudicated / Court-Placed Programs		\$96,239.23		\$96,239.23

LEA : 116496503 Shamokin Area SD

Printed 11/25/2020 9:18:29 AM

General Fund (10)				
1442 Alternative Education Programs	<u>Elementary</u>	<u>Secondary</u>	<u>Federal</u>	<u>Total</u>
100 <u>Personnel Services – Salaries</u>				
100 Personnel Services – Salaries		115,020.72		115,020.72
Total Personnel Services – Salaries		\$115,020.72		\$115,020.72
200 <u>Personnel Services – Employee Benefits</u>				
210 Group Insurance – Contracted Provider		51,570.10		51,570.10
220 Social Security Contributions		8,564.61		8,564.61
230 PSERS Retirement Contributions		39,440.59		39,440.59
260 Workers' Compensation		1,035.13		1,035.13
292 Health Savings Accounts		4,378.03		4,378.03
Total Personnel Services – Employee Benefits		\$104,988.46		\$104,988.46
300 <u>Purchased Professional and Technical Services</u>				
323 Professional Educational Services – Other Educational Agencies		2,988.00		2,988.00
Total Purchased Professional and Technical Services		\$2,988.00		\$2,988.00
500 <u>Other Purchased Services</u>				
561 Tuition To Other School Districts Within the State		3,344.90		3,344.90
568 Tuition To Private Residential Rehabilitative Institutions (PRRI) [In-State] and Detention Centers	11,340.00	72,530.20		83,870.20
Total Other Purchased Services	\$11,340.00	\$75,875.10		\$87,215.10
600 <u>Supplies</u>				
650 Supplies & Fees – Technology Related		1,906.00		1,906.00
Total Supplies		\$1,906.00		\$1,906.00
800 <u>Other Objects</u>				
810 Dues and Fees		400.00		400.00
Total Other Objects		\$400.00		\$400.00
Total 1442 Alternative Education Programs	\$11,340.00	\$301,178.28		\$312,518.28

LEA : 116496503 Shamokin Area SD

Printed 11/25/2020 9:18:29 AM

General Fund (10)

1450 Instructional Programs Outside the Established School Day	<u>Elementary</u>	<u>Secondary</u>	<u>Federal</u>	<u>Total</u>
100 <u>Personnel Services – Salaries</u>				
100 Personnel Services – Salaries			21,868.75	21,868.75
Total Personnel Services – Salaries			\$21,868.75	\$21,868.75
200 <u>Personnel Services – Employee Benefits</u>				
220 Social Security Contributions			1,660.86	1,660.86
230 PSERS Retirement Contributions			7,498.81	7,498.81
260 Workers’ Compensation			196.94	196.94
292 Health Savings Accounts			243.71	243.71
Total Personnel Services – Employee Benefits			\$9,600.32	\$9,600.32
Total 1450 Instructional Programs Outside the Established School Day			\$31,469.07	\$31,469.07

LEA : 116496503 Shamokin Area SD

Printed 11/25/2020 9:18:29 AM

General Fund (10)

1500 Nonpublic School Programs

	<u>Elementary</u>	<u>Secondary</u>	<u>Federal</u>	<u>Total</u>
300 <u>Purchased Professional and Technical Services</u>				
322 Professional Educational Services – lus			37,505.78	37,505.78
Total Purchased Professional and Technical Services			\$37,505.78	\$37,505.78
Total 1500 Nonpublic School Programs			\$37,505.78	\$37,505.78

LEA : 116496503 Shamokin Area SD

Printed 11/25/2020 9:18:29 AM

General Fund (10)				
1800 Pre-Kindergarten				
	<u>Elementary</u>	<u>Secondary</u>	<u>Federal</u>	<u>Total</u>
100 <u>Personnel Services – Salaries</u>				
100 Personnel Services – Salaries				211,165.79
Total Personnel Services – Salaries				\$211,165.79
200 <u>Personnel Services – Employee Benefits</u>				
210 Group Insurance – Contracted Provider				46,126.14
220 Social Security Contributions				16,378.65
230 PSERS Retirement Contributions				74,673.04
260 Workers' Compensation				1,961.18
292 Health Savings Accounts				2,480.00
Total Personnel Services – Employee Benefits				\$141,619.01
300 <u>Purchased Professional and Technical Services</u>				
360 Employee Training and Development Services				15.00
Total Purchased Professional and Technical Services				\$15.00
500 <u>Other Purchased Services</u>				
520 Insurance – General				2,583.60
530 Communications				300.00
Total Other Purchased Services				\$2,883.60
600 <u>Supplies</u>				
610 General Supplies				25,134.37
630 Food				3,656.00
640 Books and Periodicals				1,299.50
650 Supplies & Fees – Technology Related				798.00
Total Supplies				\$30,887.87
Total 1800 Pre-Kindergarten				\$386,571.27

LEA : 116496503 Shamokin Area SD

Printed 11/25/2020 9:18:29 AM

General Fund (10)				
1801 Pre-K Instruction	<u>Elementary</u>	<u>Secondary</u>	<u>Federal</u>	<u>Total</u>
100 <u>Personnel Services – Salaries</u>				
100 Personnel Services – Salaries				211,165.79
Total Personnel Services – Salaries				\$211,165.79
200 <u>Personnel Services – Employee Benefits</u>				
210 Group Insurance – Contracted Provider				46,126.14
220 Social Security Contributions				16,378.65
230 PSERS Retirement Contributions				74,673.04
260 Workers' Compensation				1,961.18
292 Health Savings Accounts				2,480.00
Total Personnel Services – Employee Benefits				\$141,619.01
500 <u>Other Purchased Services</u>				
520 Insurance – General				2,583.60
530 Communications				300.00
Total Other Purchased Services				\$2,883.60
600 <u>Supplies</u>				
610 General Supplies				25,134.37
640 Books and Periodicals				1,299.50
650 Supplies & Fees – Technology Related				798.00
Total Supplies				\$27,231.87
Total 1801 Pre-K Instruction				\$382,900.27

LEA : 116496503 Shamokin Area SD

Printed 11/25/2020 9:18:29 AM

General Fund (10)

1805 Pre-K Food Services

<u>Elementary</u>	<u>Secondary</u>	<u>Federal</u>	<u>Total</u>
-------------------	------------------	----------------	--------------

600 <u>Supplies</u>				
630 Food				3,656.00

Total Supplies				\$3,656.00
Total 1805 Pre-K Food Services				\$3,656.00

LEA : 116496503 Shamokin Area SD

Printed 11/25/2020 9:18:29 AM

General Fund (10)				
1806 Pre-K Professional Development	<u>Elementary</u>	<u>Secondary</u>	<u>Federal</u>	<u>Total</u>
300 <u>Purchased Professional and Technical Services</u>				
360 Employee Training and Development Services				15.00
Total Purchased Professional and Technical Services				\$15.00
Total 1806 Pre-K Professional Development				\$15.00

LEA : 116496503 Shamokin Area SD

Printed 11/25/2020 9:18:39 AM

General Fund (10)

2000 Support Services

	Total
100 Personnel Services – Salaries	
100 Personnel Services – Salaries	3,380,104.43
Total Personnel Services – Salaries	\$3,380,104.43
200 Personnel Services – Employee Benefits	
210 Group Insurance – Contracted Provider	1,078,775.30
220 Social Security Contributions	256,544.18
230 PSERS Retirement Contributions	1,095,820.28
240 Tuition Reimbursement	82,326.50
250 Unemployment Compensation	3,670.91
260 Workers' Compensation	30,497.61
270 Group Insurance – Self-Insurance	177,129.50
291 Other Retirement Plans	17,233.43
292 Health Savings Accounts	96,414.50
Total Personnel Services – Employee Benefits	\$2,838,412.21
300 Purchased Professional and Technical Services	
310 Official / Administrative Services	22,562.40
322 Professional Educational Services – Ius	4,200.00
329 Professional Educational Services – Other	2,625.00
330 Other Professional Services	143,444.33
360 Employee Training and Development Services	35,578.97
390 Other Purchased Professional and Technical Services	38,377.56
Total Purchased Professional and Technical Services	\$246,788.26
400 Purchased Property Services	
410 Cleaning Services	55,053.36
420 Utility Services	88,773.35
430 Repairs and Maintenance Services	40,398.07
440 Rentals	44,641.83
450 Construction Services	9,635.00
490 Other Purchased Property Services	8,458.00
Total Purchased Property Services	\$246,959.61
500 Other Purchased Services	
513 Contracted Carriers	1,145,790.97
516 Student Transportation Services From the IU	67,267.80
520 Insurance – General	760.00
522 Automotive Liability Insurance	21,102.00
523 General Property and Liability Insurance	111,704.40
529 Other Insurance	11,857.45
530 Communications	41,523.52
549 Other Advertising/Public Relations	2,233.10
580 Travel	995.39
Total Other Purchased Services	\$1,403,234.63
600 Supplies	
610 General Supplies	334,230.82
620 Energy	277,040.60

LEA : 116496503 Shamokin Area SD

Printed 11/25/2020 9:18:39 AM

General Fund (10)

2000 Support Services

Total

600	<u>Supplies</u>	
630	Food	1,297.50
640	Books and Periodicals	889.50
650	Supplies & Fees – Technology Related	44,629.38
Total Supplies		\$658,087.80
700	<u>Property</u>	
752	Capital Equipment – Original and Additional	2,020.00
756	Capitalized Technology Equipment – Original	(10,394.91)
758	Capitalized Technology Software - Original	43,744.98
762	Capitalized Equipment - Replacement	3,299.99
766	Capitalized Technology Equipment – Replacement	22,193.10
Total Property		\$60,863.16
800	<u>Other Objects</u>	
810	Dues and Fees	23,026.82
830	Interest	4,030.89
890	Miscellaneous Expenditures	1,050,001.00
Total Other Objects		\$1,077,058.71
Total 2000 Support Services		\$9,911,508.81

LEA : 116496503 Shamokin Area SD

Printed 11/25/2020 9:18:39 AM

General Fund (10)				
2100 Support Services – Students	<u>Elementary</u>	<u>Secondary</u>	<u>Federal</u>	<u>Total</u>
100 <u>Personnel Services – Salaries</u>				
100 Personnel Services – Salaries	80,898.11	170,211.75		341,763.92
Total Personnel Services – Salaries	\$80,898.11	\$170,211.75		\$341,763.92
200 <u>Personnel Services – Employee Benefits</u>				
210 Group Insurance – Contracted Provider	11,584.20	57,113.24		86,761.72
220 Social Security Contributions	6,104.07	12,585.48		25,495.56
230 PSERS Retirement Contributions	27,369.61	58,310.60		116,737.98
260 Workers' Compensation	728.04	1,531.83		3,075.70
292 Health Savings Accounts	604.97	3,495.03		6,327.50
Total Personnel Services – Employee Benefits	\$46,390.89	\$133,036.18		\$238,398.46
300 <u>Purchased Professional and Technical Services</u>				
330 Other Professional Services		9,200.00		9,200.00
Total Purchased Professional and Technical Services		\$9,200.00		\$9,200.00
500 <u>Other Purchased Services</u>				
580 Travel	117.91			117.91
Total Other Purchased Services	\$117.91			\$117.91
600 <u>Supplies</u>				
610 General Supplies	4,500.39		2,403.00	7,188.76
640 Books and Periodicals				149.90
Total Supplies	\$4,500.39		\$2,403.00	\$7,338.66
800 <u>Other Objects</u>				
810 Dues and Fees	295.00			295.00
Total Other Objects	\$295.00			\$295.00
Total 2100 Support Services – Students	\$132,202.30	\$312,447.93	\$2,403.00	\$597,113.95

LEA : 116496503 Shamokin Area SD

Printed 11/25/2020 9:18:39 AM

General Fund (10)				
2120 Guidance Services	Elementary	Secondary	Federal	Total
100 Personnel Services – Salaries				
100 Personnel Services – Salaries	46,583.00	143,658.23		190,241.23
Total Personnel Services – Salaries	\$46,583.00	\$143,658.23		\$190,241.23
200 Personnel Services – Employee Benefits				
210 Group Insurance – Contracted Provider	68.40	47,367.64		47,436.04
220 Social Security Contributions	3,564.27	10,623.90		14,188.17
230 PSERS Retirement Contributions	15,630.50	49,205.41		64,835.91
260 Workers' Compensation	419.30	1,292.88		1,712.18
292 Health Savings Accounts		3,000.00		3,000.00
Total Personnel Services – Employee Benefits	\$19,682.47	\$111,489.83		\$131,172.30
600 Supplies				
610 General Supplies	258.96			258.96
Total Supplies	\$258.96			\$258.96
Total 2120 Guidance Services	\$66,524.43	\$255,148.06		\$321,672.49

LEA : 116496503 Shamokin Area SD

Printed 11/25/2020 9:18:39 AM

General Fund (10)				
2140 Psychological Services	<u>Elementary</u>	<u>Secondary</u>	<u>Federal</u>	<u>Total</u>
100 <u>Personnel Services – Salaries</u>				
100 Personnel Services – Salaries	34,315.11	26,553.52		60,868.63
Total Personnel Services – Salaries	\$34,315.11	\$26,553.52		\$60,868.63
200 <u>Personnel Services – Employee Benefits</u>				
210 Group Insurance – Contracted Provider	11,515.80	9,745.60		21,261.40
220 Social Security Contributions	2,539.80	1,961.58		4,501.38
230 PSERS Retirement Contributions	11,739.11	9,105.19		20,844.30
260 Workers' Compensation	308.74	238.95		547.69
292 Health Savings Accounts	604.97	495.03		1,100.00
Total Personnel Services – Employee Benefits	\$26,708.42	\$21,546.35		\$48,254.77
300 <u>Purchased Professional and Technical Services</u>				
330 Other Professional Services		9,200.00		9,200.00
Total Purchased Professional and Technical Services		\$9,200.00		\$9,200.00
500 <u>Other Purchased Services</u>				
580 Travel	117.91			117.91
Total Other Purchased Services	\$117.91			\$117.91
600 <u>Supplies</u>				
610 General Supplies	4,241.43		2,403.00	6,644.43
Total Supplies	\$4,241.43		\$2,403.00	\$6,644.43
800 <u>Other Objects</u>				
810 Dues and Fees	295.00			295.00
Total Other Objects	\$295.00			\$295.00
Total 2140 Psychological Services	\$65,677.87	\$57,299.87	\$2,403.00	\$125,380.74

LEA : 116496503 Shamokin Area SD

Printed 11/25/2020 9:18:39 AM

General Fund (10)				
2160 Social Work Services	<u>Elementary</u>	<u>Secondary</u>	<u>Federal</u>	<u>Total</u>
100 <u>Personnel Services – Salaries</u>				
100 Personnel Services – Salaries				90,654.06
Total Personnel Services – Salaries				\$90,654.06
200 <u>Personnel Services – Employee Benefits</u>				
210 Group Insurance – Contracted Provider				18,064.28
220 Social Security Contributions				6,806.01
230 PSERS Retirement Contributions				31,057.77
260 Workers' Compensation				815.83
292 Health Savings Accounts				2,227.50
Total Personnel Services – Employee Benefits				\$58,971.39
600 <u>Supplies</u>				
610 General Supplies				285.37
640 Books and Periodicals				149.90
Total Supplies				\$435.27
Total 2160 Social Work Services				\$150,060.72

LEA : 116496503 Shamokin Area SD

Printed 11/25/2020 9:18:39 AM

General Fund (10)

2200 Support Services – Instructional Staff	Elementary	Secondary	Federal	Total
100 Personnel Services – Salaries				
100 Personnel Services – Salaries	124,852.35	201,249.75	12,028.70	338,130.80
Total Personnel Services – Salaries	\$124,852.35	\$201,249.75	\$12,028.70	\$338,130.80
200 Personnel Services – Employee Benefits				
210 Group Insurance – Contracted Provider	28,218.79	62,132.49		90,351.28
220 Social Security Contributions	9,472.23	15,274.79	912.86	25,659.88
230 PSERS Retirement Contributions	39,284.32	64,954.16	3,991.49	108,229.97
240 Tuition Reimbursement	27,578.00	50,149.50		77,727.50
260 Workers' Compensation	1,123.87	1,810.94	108.20	3,043.01
270 Group Insurance – Self-Insurance		48,478.50		48,478.50
291 Other Retirement Plans		4,940.00		4,940.00
292 Health Savings Accounts		2,450.00		2,450.00
Total Personnel Services – Employee Benefits	\$105,677.21	\$250,190.38	\$5,012.55	\$360,880.14
300 Purchased Professional and Technical Services				
329 Professional Educational Services – Other		2,625.00		2,625.00
360 Employee Training and Development Services	300.00	970.00	27,955.00	29,225.00
Total Purchased Professional and Technical Services	\$300.00	\$3,595.00	\$27,955.00	\$31,850.00
500 Other Purchased Services				
530 Communications		520.11		520.11
Total Other Purchased Services		\$520.11		\$520.11
600 Supplies				
610 General Supplies	845.71	930.12	300.00	2,075.83
630 Food		1,027.50		1,027.50
640 Books and Periodicals	248.50			248.50
650 Supplies & Fees – Technology Related	744.83	744.83		1,489.66
Total Supplies	\$1,839.04	\$2,702.45	\$300.00	\$4,841.49
800 Other Objects				
810 Dues and Fees		1,843.00		1,843.00
Total Other Objects		\$1,843.00		\$1,843.00
Total 2200 Support Services – Instructional Staff	\$232,668.60	\$460,100.69	\$45,296.25	\$738,065.54

LEA : 116496503 Shamokin Area SD

Printed 11/25/2020 9:18:39 AM

General Fund (10)				
2250 School Library Services				
	<u>Elementary</u>	<u>Secondary</u>	<u>Federal</u>	<u>Total</u>
100 <u>Personnel Services – Salaries</u>				
100 Personnel Services – Salaries	8,901.97	3,798.74		12,700.71
Total Personnel Services – Salaries	\$8,901.97	\$3,798.74		\$12,700.71
200 <u>Personnel Services – Employee Benefits</u>				
220 Social Security Contributions	681.16	290.62		971.78
230 PSERS Retirement Contributions	3,052.53	1,302.62		4,355.15
260 Workers’ Compensation	80.20	34.10		114.30
Total Personnel Services – Employee Benefits	\$3,813.89	\$1,627.34		\$5,441.23
600 <u>Supplies</u>				
640 Books and Periodicals	248.50			248.50
650 Supplies & Fees – Technology Related	744.83	744.83		1,489.66
Total Supplies	\$993.33	\$744.83		\$1,738.16
Total 2250 School Library Services	\$13,709.19	\$6,170.91		\$19,880.10

LEA : 116496503 Shamokin Area SD

Printed 11/25/2020 9:18:39 AM

General Fund (10)				
2260 Instruction and Curriculum Development Services	<u>Elementary</u>	<u>Secondary</u>	<u>Federal</u>	<u>Total</u>
100 <u>Personnel Services – Salaries</u>				
100 Personnel Services – Salaries	115,950.38	197,451.01		313,401.39
Total Personnel Services – Salaries	\$115,950.38	\$197,451.01		\$313,401.39
200 <u>Personnel Services – Employee Benefits</u>				
210 Group Insurance – Contracted Provider	28,218.79	62,132.49		90,351.28
220 Social Security Contributions	8,791.07	14,984.17		23,775.24
230 PSERS Retirement Contributions	36,231.79	63,651.54		99,883.33
260 Workers' Compensation	1,043.67	1,776.84		2,820.51
270 Group Insurance – Self-Insurance		48,478.50		48,478.50
291 Other Retirement Plans		4,940.00		4,940.00
292 Health Savings Accounts		2,450.00		2,450.00
Total Personnel Services – Employee Benefits	\$74,285.32	\$198,413.54		\$272,698.86
600 <u>Supplies</u>				
610 General Supplies		180.16		180.16
630 Food		22.50		22.50
Total Supplies		\$202.66		\$202.66
800 <u>Other Objects</u>				
810 Dues and Fees		1,843.00		1,843.00
Total Other Objects		\$1,843.00		\$1,843.00
Total 2260 Instruction and Curriculum Development Services	\$190,235.70	\$397,910.21		\$588,145.91

LEA : 116496503 Shamokin Area SD

Printed 11/25/2020 9:18:39 AM

General Fund (10)				
2270 Instructional Staff Professional Development Services	<u>Elementary</u>	<u>Secondary</u>	<u>Federal</u>	<u>Total</u>
100 <u>Personnel Services – Salaries</u>				
100 Personnel Services – Salaries			12,028.70	12,028.70
Total Personnel Services – Salaries			\$12,028.70	\$12,028.70
200 <u>Personnel Services – Employee Benefits</u>				
220 Social Security Contributions			912.86	912.86
230 PSERS Retirement Contributions			3,991.49	3,991.49
240 Tuition Reimbursement	27,578.00	50,149.50		77,727.50
260 Workers' Compensation			108.20	108.20
Total Personnel Services – Employee Benefits	\$27,578.00	\$50,149.50	\$5,012.55	\$82,740.05
300 <u>Purchased Professional and Technical Services</u>				
329 Professional Educational Services – Other		2,625.00		2,625.00
360 Employee Training and Development Services	300.00	970.00	27,955.00	29,225.00
Total Purchased Professional and Technical Services	\$300.00	\$3,595.00	\$27,955.00	\$31,850.00
500 <u>Other Purchased Services</u>				
530 Communications		520.11		520.11
Total Other Purchased Services		\$520.11		\$520.11
600 <u>Supplies</u>				
610 General Supplies	845.71	749.96	300.00	1,895.67
630 Food		1,005.00		1,005.00
Total Supplies	\$845.71	\$1,754.96	\$300.00	\$2,900.67
Total 2270 Instructional Staff Professional Development Services	\$28,723.71	\$56,019.57	\$45,296.25	\$130,039.53

LEA : 116496503 Shamokin Area SD

Printed 11/25/2020 9:18:39 AM

General Fund (10)				
2300 Support Services – Administration	<u>Elementary</u>	<u>Secondary</u>	<u>Federal</u>	<u>Total</u>
100 <u>Personnel Services – Salaries</u>				
100 Personnel Services – Salaries	285,166.97	308,692.27		846,221.21
Total Personnel Services – Salaries	\$285,166.97	\$308,692.27		\$846,221.21
200 <u>Personnel Services – Employee Benefits</u>				
210 Group Insurance – Contracted Provider	105,312.48	127,072.17		275,349.19
220 Social Security Contributions	21,502.97	23,138.38		63,446.49
230 PSERS Retirement Contributions	93,090.26	101,477.84		254,809.56
260 Workers' Compensation	2,566.55	2,778.07		7,615.87
291 Other Retirement Plans	1,950.00	628.30		6,518.05
292 Health Savings Accounts	6,750.00	9,450.00		17,550.00
Total Personnel Services – Employee Benefits	\$231,172.26	\$264,544.76		\$625,289.16
300 <u>Purchased Professional and Technical Services</u>				
310 Official / Administrative Services				22,562.40
330 Other Professional Services				71,119.62
390 Other Purchased Professional and Technical Services				34,935.56
Total Purchased Professional and Technical Services				\$128,617.58
400 <u>Purchased Property Services</u>				
430 Repairs and Maintenance Services		580.00		580.00
440 Rentals	758.91			1,174.57
Total Purchased Property Services	\$758.91	\$580.00		\$1,754.57
500 <u>Other Purchased Services</u>				
520 Insurance – General		200.00		760.00
530 Communications		977.04		2,128.45
Total Other Purchased Services		\$1,177.04		\$2,888.45
600 <u>Supplies</u>				
610 General Supplies	2,708.94	835.72		8,187.66
630 Food				270.00
640 Books and Periodicals				204.00
Total Supplies	\$2,708.94	\$835.72		\$8,661.66
800 <u>Other Objects</u>				
810 Dues and Fees	1,308.00	1,249.00		10,730.04
Total Other Objects	\$1,308.00	\$1,249.00		\$10,730.04
Total 2300 Support Services – Administration	\$521,115.08	\$577,078.79		\$1,624,162.67

LEA : 116496503 Shamokin Area SD

Printed 11/25/2020 9:18:39 AM

General Fund (10)				
2310 Board Services				
	<u>Elementary</u>	<u>Secondary</u>	<u>Federal</u>	<u>Total</u>
100 <u>Personnel Services – Salaries</u>				
100 Personnel Services – Salaries				2,646.05
Total Personnel Services – Salaries				\$2,646.05
200 <u>Personnel Services – Employee Benefits</u>				
220 Social Security Contributions				202.59
260 Workers’ Compensation				23.73
Total Personnel Services – Employee Benefits				\$226.32
500 <u>Other Purchased Services</u>				
520 Insurance – General				560.00
Total Other Purchased Services				\$560.00
600 <u>Supplies</u>				
610 General Supplies				107.09
630 Food				270.00
Total Supplies				\$377.09
800 <u>Other Objects</u>				
810 Dues and Fees				6,865.04
Total Other Objects				\$6,865.04
Total 2310 Board Services				\$10,674.50

LEA : 116496503 Shamokin Area SD

Printed 11/25/2020 9:18:39 AM

General Fund (10)

2320 Board Treasurer Services		<u>Elementary</u>	<u>Secondary</u>	<u>Federal</u>	<u>Total</u>
100	<u>Personnel Services – Salaries</u>				
100	Personnel Services – Salaries				2,700.10
Total Personnel Services – Salaries					\$2,700.10
200	<u>Personnel Services – Employee Benefits</u>				
220	Social Security Contributions				206.70
260	Workers’ Compensation				24.18
Total Personnel Services – Employee Benefits					\$230.88
Total 2320 Board Treasurer Services					\$2,930.98

LEA : 116496503 Shamokin Area SD

Printed 11/25/2020 9:18:39 AM

General Fund (10)				
2330 Tax Assessment and Collection Services	<u>Elementary</u>	<u>Secondary</u>	<u>Federal</u>	<u>Total</u>
100 <u>Personnel Services – Salaries</u>				
100 Personnel Services – Salaries				44,979.56
Total Personnel Services – Salaries				\$44,979.56
200 <u>Personnel Services – Employee Benefits</u>				
220 Social Security Contributions				3,440.88
260 Workers’ Compensation				405.04
Total Personnel Services – Employee Benefits				\$3,845.92
300 <u>Purchased Professional and Technical Services</u>				
310 Official / Administrative Services				22,562.40
330 Other Professional Services				20,084.63
390 Other Purchased Professional and Technical Services				34,935.56
Total Purchased Professional and Technical Services				\$77,582.59
500 <u>Other Purchased Services</u>				
530 Communications				1,151.41
Total Other Purchased Services				\$1,151.41
600 <u>Supplies</u>				
610 General Supplies				4,313.95
Total Supplies				\$4,313.95
Total 2330 Tax Assessment and Collection Services				\$131,873.43

LEA : 116496503 Shamokin Area SD

Printed 11/25/2020 9:18:39 AM

General Fund (10)

2350 Legal and Accounting Services	<u>Elementary</u>	<u>Secondary</u>	<u>Federal</u>	<u>Total</u>
300 <u>Purchased Professional and Technical Services</u>				
330 Other Professional Services				31,034.99
Total Purchased Professional and Technical Services				\$31,034.99
Total 2350 Legal and Accounting Services				\$31,034.99

LEA : 116496503 Shamokin Area SD

Printed 11/25/2020 9:18:39 AM

General Fund (10)				
2360 Office of the Superintendent / Executive Director Services	<u>Elementary</u>	<u>Secondary</u>	<u>Federal</u>	<u>Total</u>
100 <u>Personnel Services – Salaries</u>				
100 Personnel Services – Salaries				202,036.26
Total Personnel Services – Salaries				\$202,036.26
200 <u>Personnel Services – Employee Benefits</u>				
210 Group Insurance – Contracted Provider				42,964.54
220 Social Security Contributions				14,954.97
230 PSERS Retirement Contributions				60,241.46
260 Workers' Compensation				1,818.30
291 Other Retirement Plans				3,939.75
292 Health Savings Accounts				1,350.00
Total Personnel Services – Employee Benefits				\$125,269.02
400 <u>Purchased Property Services</u>				
440 Rentals				415.66
Total Purchased Property Services				\$415.66
500 <u>Other Purchased Services</u>				
530 Communications		520.12		520.12
Total Other Purchased Services		\$520.12		\$520.12
600 <u>Supplies</u>				
610 General Supplies				221.96
640 Books and Periodicals				204.00
Total Supplies				\$425.96
800 <u>Other Objects</u>				
810 Dues and Fees				1,224.00
Total Other Objects				\$1,224.00
Total 2360 Office of the Superintendent / Executive Director Services		\$520.12		\$329,891.02

LEA : 116496503 Shamokin Area SD

Printed 11/25/2020 9:18:39 AM

General Fund (10)

2370 Community Relations Services

<u>Elementary</u>	<u>Secondary</u>	<u>Federal</u>	<u>Total</u>
-------------------	------------------	----------------	--------------

300 Purchased Professional and Technical Services

330 Other Professional Services				15,000.00
---------------------------------	--	--	--	-----------

Total Purchased Professional and Technical Services				\$15,000.00
--	--	--	--	--------------------

Total 2370 Community Relations Services				\$15,000.00
--	--	--	--	--------------------

LEA : 116496503 Shamokin Area SD

Printed 11/25/2020 9:18:39 AM

General Fund (10)				
2380 Office of the Principal Services	<u>Elementary</u>	<u>Secondary</u>	<u>Federal</u>	<u>Total</u>
100 <u>Personnel Services – Salaries</u>				
100 Personnel Services – Salaries	285,166.97	308,692.27		593,859.24
Total Personnel Services – Salaries	\$285,166.97	\$308,692.27		\$593,859.24
200 <u>Personnel Services – Employee Benefits</u>				
210 Group Insurance – Contracted Provider	105,312.48	127,072.17		232,384.65
220 Social Security Contributions	21,502.97	23,138.38		44,641.35
230 PSERS Retirement Contributions	93,090.26	101,477.84		194,568.10
260 Workers' Compensation	2,566.55	2,778.07		5,344.62
291 Other Retirement Plans	1,950.00	628.30		2,578.30
292 Health Savings Accounts	6,750.00	9,450.00		16,200.00
Total Personnel Services – Employee Benefits	\$231,172.26	\$264,544.76		\$495,717.02
400 <u>Purchased Property Services</u>				
430 Repairs and Maintenance Services		580.00		580.00
440 Rentals	758.91			758.91
Total Purchased Property Services	\$758.91	\$580.00		\$1,338.91
500 <u>Other Purchased Services</u>				
520 Insurance – General		200.00		200.00
530 Communications		456.92		456.92
Total Other Purchased Services		\$656.92		\$656.92
600 <u>Supplies</u>				
610 General Supplies	2,708.94	835.72		3,544.66
Total Supplies	\$2,708.94	\$835.72		\$3,544.66
800 <u>Other Objects</u>				
810 Dues and Fees	1,308.00	1,249.00		2,557.00
Total Other Objects	\$1,308.00	\$1,249.00		\$2,557.00
Total 2380 Office of the Principal Services	\$521,115.08	\$576,558.67		\$1,097,673.75

LEA : 116496503 Shamokin Area SD

Printed 11/25/2020 9:18:39 AM

General Fund (10)				
2390 Other Administration Services	<u>Elementary</u>	<u>Secondary</u>	<u>Federal</u>	<u>Total</u>
300 <u>Purchased Professional and Technical Services</u>				
330 Other Professional Services				5,000.00
Total Purchased Professional and Technical Services				\$5,000.00
800 <u>Other Objects</u>				
810 Dues and Fees				84.00
Total Other Objects				\$84.00
Total 2390 Other Administration Services				\$5,084.00

LEA : 116496503 Shamokin Area SD

Printed 11/25/2020 9:18:39 AM

General Fund (10)					
2400 Support Services – Pupil Health		Elementary	Secondary	Federal	Total
100 Personnel Services – Salaries					
100 Personnel Services – Salaries				35,606.36	202,542.71
Total Personnel Services – Salaries				\$35,606.36	\$202,542.71
200 Personnel Services – Employee Benefits					
210 Group Insurance – Contracted Provider				24,662.14	111,006.04
220 Social Security Contributions				2,626.68	15,119.73
230 PSERS Retirement Contributions				12,024.20	65,269.13
260 Workers' Compensation				320.49	1,823.04
270 Group Insurance – Self-Insurance					16,120.00
292 Health Savings Accounts				2,700.00	11,750.00
Total Personnel Services – Employee Benefits				\$42,333.51	\$221,087.94
300 Purchased Professional and Technical Services					
330 Other Professional Services					17,599.67
Total Purchased Professional and Technical Services					\$17,599.67
400 Purchased Property Services					
430 Repairs and Maintenance Services					336.00
Total Purchased Property Services					\$336.00
500 Other Purchased Services					
530 Communications					172.71
Total Other Purchased Services					\$172.71
600 Supplies					
610 General Supplies					6,813.94
Total Supplies					\$6,813.94
800 Other Objects					
810 Dues and Fees					100.00
Total Other Objects					\$100.00
Total 2400 Support Services – Pupil Health				\$77,939.87	\$448,652.97

LEA : 116496503 Shamokin Area SD

Printed 11/25/2020 9:18:39 AM

General Fund (10)

2420 Medical Services

<u>Elementary</u>	<u>Secondary</u>	<u>Federal</u>	<u>Total</u>
-------------------	------------------	----------------	--------------

300 Purchased Professional and Technical Services

330 Other Professional Services			5,052.17
---------------------------------	--	--	----------

Total Purchased Professional and Technical Services			\$5,052.17
--	--	--	-------------------

Total 2420 Medical Services			\$5,052.17
------------------------------------	--	--	-------------------

LEA : 116496503 Shamokin Area SD

Printed 11/25/2020 9:18:39 AM

General Fund (10)				
2430 Dental Services	<u>Elementary</u>	<u>Secondary</u>	<u>Federal</u>	<u>Total</u>
300 <u>Purchased Professional and Technical Services</u>				
330 Other Professional Services				145.50
Total Purchased Professional and Technical Services				\$145.50
600 <u>Supplies</u>				
610 General Supplies				59.97
Total Supplies				\$59.97
Total 2430 Dental Services				\$205.47

LEA : 116496503 Shamokin Area SD

Printed 11/25/2020 9:18:39 AM

General Fund (10)				
2440 Nursing Services				
	<u>Elementary</u>	<u>Secondary</u>	<u>Federal</u>	<u>Total</u>
100 <u>Personnel Services – Salaries</u>				
100 Personnel Services – Salaries			35,606.36	197,810.13
Total Personnel Services – Salaries			\$35,606.36	\$197,810.13
200 <u>Personnel Services – Employee Benefits</u>				
210 Group Insurance – Contracted Provider			24,662.14	107,838.98
220 Social Security Contributions			2,626.68	14,773.34
230 PSERS Retirement Contributions			12,024.20	63,646.35
260 Workers' Compensation			320.49	1,780.42
270 Group Insurance – Self-Insurance				16,120.00
292 Health Savings Accounts			2,700.00	10,670.00
Total Personnel Services – Employee Benefits			\$42,333.51	\$214,829.09
400 <u>Purchased Property Services</u>				
430 Repairs and Maintenance Services				291.00
Total Purchased Property Services				\$291.00
500 <u>Other Purchased Services</u>				
530 Communications				172.71
Total Other Purchased Services				\$172.71
600 <u>Supplies</u>				
610 General Supplies				5,621.36
Total Supplies				\$5,621.36
800 <u>Other Objects</u>				
810 Dues and Fees				100.00
Total Other Objects				\$100.00
Total 2440 Nursing Services			\$77,939.87	\$418,824.29

LEA : 116496503 Shamokin Area SD

Printed 11/25/2020 9:18:39 AM

General Fund (10)

2450 Nonpublic Health Services	<u>Elementary</u>	<u>Secondary</u>	<u>Federal</u>	<u>Total</u>
100 <u>Personnel Services – Salaries</u>				
100 Personnel Services – Salaries				4,732.58
Total Personnel Services – Salaries				\$4,732.58
200 <u>Personnel Services – Employee Benefits</u>				
210 Group Insurance – Contracted Provider				3,167.06
220 Social Security Contributions				346.39
230 PSERS Retirement Contributions				1,622.78
260 Workers' Compensation				42.62
292 Health Savings Accounts				1,080.00
Total Personnel Services – Employee Benefits				\$6,258.85
400 <u>Purchased Property Services</u>				
430 Repairs and Maintenance Services				45.00
Total Purchased Property Services				\$45.00
600 <u>Supplies</u>				
610 General Supplies				1,132.61
Total Supplies				\$1,132.61
Total 2450 Nonpublic Health Services				\$12,169.04

LEA : 116496503 Shamokin Area SD

Printed 11/25/2020 9:18:39 AM

General Fund (10)

2490 Other Health Services

<u>Elementary</u>	<u>Secondary</u>	<u>Federal</u>	<u>Total</u>
-------------------	------------------	----------------	--------------

300 Purchased Professional and Technical Services

330 Other Professional Services			12,402.00
---------------------------------	--	--	-----------

Total Purchased Professional and Technical Services			\$12,402.00
--	--	--	--------------------

Total 2490 Other Health Services			\$12,402.00
---	--	--	--------------------

LEA : 116496503 Shamokin Area SD

Printed 11/25/2020 9:18:39 AM

General Fund (10)

2500 Support Services – Business	Elementary	Secondary	Federal	Total
100 <u>Personnel Services – Salaries</u>				
100 Personnel Services – Salaries			15,780.64	376,736.86
Total Personnel Services – Salaries			\$15,780.64	\$376,736.86
200 <u>Personnel Services – Employee Benefits</u>				
210 Group Insurance – Contracted Provider			12,330.94	137,045.16
220 Social Security Contributions			1,182.33	28,488.27
230 PSERS Retirement Contributions			5,411.13	123,880.28
260 Workers' Compensation			142.02	3,391.19
270 Group Insurance – Self-Insurance				92,050.00
291 Other Retirement Plans				2,730.00
292 Health Savings Accounts			1,350.00	11,012.00
Total Personnel Services – Employee Benefits			\$20,416.42	\$398,596.90
300 <u>Purchased Professional and Technical Services</u>				
322 Professional Educational Services – Ius				4,200.00
330 Other Professional Services				44,497.24
Total Purchased Professional and Technical Services				\$48,697.24
400 <u>Purchased Property Services</u>				
430 Repairs and Maintenance Services				360.00
440 Rentals				29,455.80
Total Purchased Property Services				\$29,815.80
500 <u>Other Purchased Services</u>				
530 Communications				15,714.92
549 Other Advertising/Public Relations				2,233.10
Total Other Purchased Services				\$17,948.02
600 <u>Supplies</u>				
610 General Supplies				2,531.03
650 Supplies & Fees – Technology Related				22,835.04
Total Supplies				\$25,366.07
800 <u>Other Objects</u>				
810 Dues and Fees			1,250.00	9,580.64
830 Interest				4,030.89
890 Miscellaneous Expenditures				1,050,001.00
Total Other Objects			\$1,250.00	\$1,063,612.53
Total 2500 Support Services – Business			\$37,447.06	\$1,960,773.42

LEA : 116496503 Shamokin Area SD

Printed 11/25/2020 9:18:39 AM

General Fund (10)				
2510 Fiscal Services				
	<u>Elementary</u>	<u>Secondary</u>	<u>Federal</u>	<u>Total</u>
100 <u>Personnel Services – Salaries</u>				
100 Personnel Services – Salaries			15,780.64	343,368.22
Total Personnel Services – Salaries			\$15,780.64	\$343,368.22
200 <u>Personnel Services – Employee Benefits</u>				
210 Group Insurance – Contracted Provider			12,330.94	122,455.95
220 Social Security Contributions			1,182.33	25,972.75
230 PSERS Retirement Contributions			5,411.13	112,438.19
260 Workers' Compensation			142.02	3,090.84
270 Group Insurance – Self-Insurance				92,050.00
291 Other Retirement Plans				2,730.00
292 Health Savings Accounts			1,350.00	11,012.00
Total Personnel Services – Employee Benefits			\$20,416.42	\$369,749.73
300 <u>Purchased Professional and Technical Services</u>				
330 Other Professional Services				44,497.24
Total Purchased Professional and Technical Services				\$44,497.24
500 <u>Other Purchased Services</u>				
530 Communications				1,014.92
Total Other Purchased Services				\$1,014.92
600 <u>Supplies</u>				
650 Supplies & Fees – Technology Related				22,835.04
Total Supplies				\$22,835.04
800 <u>Other Objects</u>				
810 Dues and Fees			1,250.00	9,580.64
830 Interest				4,030.89
890 Miscellaneous Expenditures				1,050,001.00
Total Other Objects			\$1,250.00	\$1,063,612.53
Total 2510 Fiscal Services			\$37,447.06	\$1,845,077.68

LEA : 116496503 Shamokin Area SD

Printed 11/25/2020 9:18:39 AM

General Fund (10)				
2511 Supervision of Fiscal Services - Head of Component	<u>Elementary</u>	<u>Secondary</u>	<u>Federal</u>	<u>Total</u>
100 <u>Personnel Services – Salaries</u>				
100 Personnel Services – Salaries				173,907.26
Total Personnel Services – Salaries				\$173,907.26
200 <u>Personnel Services – Employee Benefits</u>				
210 Group Insurance – Contracted Provider				35,813.94
220 Social Security Contributions				13,286.59
230 PSERS Retirement Contributions				55,993.26
260 Workers' Compensation				1,565.56
291 Other Retirement Plans				2,730.00
292 Health Savings Accounts				1,350.00
Total Personnel Services – Employee Benefits				\$110,739.35
600 <u>Supplies</u>				
650 Supplies & Fees – Technology Related				12,543.04
Total Supplies				\$12,543.04
800 <u>Other Objects</u>				
810 Dues and Fees				575.00
Total Other Objects				\$575.00
Total 2511 Supervision of Fiscal Services - Head of Component				\$297,764.65

LEA : 116496503 Shamokin Area SD

Printed 11/25/2020 9:18:39 AM

General Fund (10)

2513 Receiving and Disbursing Funds Services	<u>Elementary</u>	<u>Secondary</u>	<u>Federal</u>	<u>Total</u>
100 <u>Personnel Services – Salaries</u>				
100 Personnel Services – Salaries				64,590.60
Total Personnel Services – Salaries				\$64,590.60
200 <u>Personnel Services – Employee Benefits</u>				
210 Group Insurance – Contracted Provider				30,188.79
220 Social Security Contributions				4,869.99
230 PSERS Retirement Contributions				21,754.91
260 Workers' Compensation				581.31
270 Group Insurance – Self-Insurance				92,050.00
292 Health Savings Accounts				4,100.00
Total Personnel Services – Employee Benefits				\$153,545.00
Total 2513 Receiving and Disbursing Funds Services				\$218,135.60

LEA : 116496503 Shamokin Area SD

Printed 11/25/2020 9:18:39 AM

General Fund (10)

2514 Payroll Services

	<u>Elementary</u>	<u>Secondary</u>	<u>Federal</u>	<u>Total</u>
100 <u>Personnel Services – Salaries</u>				
100 Personnel Services – Salaries				54,439.01
Total Personnel Services – Salaries				\$54,439.01
200 <u>Personnel Services – Employee Benefits</u>				
210 Group Insurance – Contracted Provider				19,460.14
220 Social Security Contributions				4,072.40
230 PSERS Retirement Contributions				17,628.65
260 Workers' Compensation				489.97
292 Health Savings Accounts				1,512.00
Total Personnel Services – Employee Benefits				\$43,163.16
600 <u>Supplies</u>				
650 Supplies & Fees – Technology Related				10,292.00
Total Supplies				\$10,292.00
Total 2514 Payroll Services				\$107,894.17

LEA : 116496503 Shamokin Area SD

Printed 11/25/2020 9:18:39 AM

General Fund (10)

2515 Financial Accounting Services	<u>Elementary</u>	<u>Secondary</u>	<u>Federal</u>	<u>Total</u>
100 <u>Personnel Services – Salaries</u>				
100 Personnel Services – Salaries			15,780.64	50,431.35
Total Personnel Services – Salaries			\$15,780.64	\$50,431.35
200 <u>Personnel Services – Employee Benefits</u>				
210 Group Insurance – Contracted Provider			12,330.94	36,993.08
220 Social Security Contributions			1,182.33	3,743.77
230 PSERS Retirement Contributions			5,411.13	17,061.37
260 Workers' Compensation			142.02	454.00
292 Health Savings Accounts			1,350.00	4,050.00
Total Personnel Services – Employee Benefits			\$20,416.42	\$62,302.22
Total 2515 Financial Accounting Services			\$36,197.06	\$112,733.57

LEA : 116496503 Shamokin Area SD

Printed 11/25/2020 9:18:39 AM

General Fund (10)				
2516 Internal Auditing Services	<u>Elementary</u>	<u>Secondary</u>	<u>Federal</u>	<u>Total</u>
300 <u>Purchased Professional and Technical Services</u>				
330 Other Professional Services				19,000.00
Total Purchased Professional and Technical Services				\$19,000.00
Total 2516 Internal Auditing Services				\$19,000.00

LEA : 116496503 Shamokin Area SD

Printed 11/25/2020 9:18:39 AM

General Fund (10)				
2517 Property Accounting Services	<u>Elementary</u>	<u>Secondary</u>	<u>Federal</u>	<u>Total</u>
300 <u>Purchased Professional and Technical Services</u>				
330 Other Professional Services				1,050.00
Total Purchased Professional and Technical Services				\$1,050.00
Total 2517 Property Accounting Services				\$1,050.00

LEA : 116496503 Shamokin Area SD

Printed 11/25/2020 9:18:39 AM

General Fund (10)				
2519 Other Fiscal Services	<u>Elementary</u>	<u>Secondary</u>	<u>Federal</u>	<u>Total</u>
300 <u>Purchased Professional and Technical Services</u>				
330 Other Professional Services				24,447.24
Total Purchased Professional and Technical Services				\$24,447.24
500 <u>Other Purchased Services</u>				
530 Communications				1,014.92
Total Other Purchased Services				\$1,014.92
800 <u>Other Objects</u>				
810 Dues and Fees			1,250.00	9,005.64
830 Interest				4,030.89
890 Miscellaneous Expenditures				1,050,001.00
Total Other Objects			\$1,250.00	\$1,063,037.53
Total 2519 Other Fiscal Services			\$1,250.00	\$1,088,499.69

LEA : 116496503 Shamokin Area SD

Printed 11/25/2020 9:18:39 AM

General Fund (10)				
2520 Purchasing Services	<u>Elementary</u>	<u>Secondary</u>	<u>Federal</u>	<u>Total</u>
400 <u>Purchased Property Services</u>				
430 Repairs and Maintenance Services				360.00
440 Rentals				3,615.96
Total Purchased Property Services				\$3,975.96
500 <u>Other Purchased Services</u>				
530 Communications				14,700.00
Total Other Purchased Services				\$14,700.00
600 <u>Supplies</u>				
610 General Supplies				2,097.31
Total Supplies				\$2,097.31
Total 2520 Purchasing Services				\$20,773.27

LEA : 116496503 Shamokin Area SD

Printed 11/25/2020 9:18:39 AM

General Fund (10)

2530 Warehousing and Distributing Services	<u>Elementary</u>	<u>Secondary</u>	<u>Federal</u>	<u>Total</u>
100 <u>Personnel Services – Salaries</u>				
100 Personnel Services – Salaries				33,368.64
Total Personnel Services – Salaries				\$33,368.64
200 <u>Personnel Services – Employee Benefits</u>				
210 Group Insurance – Contracted Provider				14,589.21
220 Social Security Contributions				2,515.52
230 PSERS Retirement Contributions				11,442.09
260 Workers' Compensation				300.35
Total Personnel Services – Employee Benefits				\$28,847.17
Total 2530 Warehousing and Distributing Services				\$62,215.81

LEA : 116496503 Shamokin Area SD

Printed 11/25/2020 9:18:39 AM

General Fund (10)

2540 Printing, Publishing and Duplicating Services	<u>Elementary</u>	<u>Secondary</u>	<u>Federal</u>	<u>Total</u>
400 <u>Purchased Property Services</u>				
440 Rentals				25,839.84
Total Purchased Property Services				\$25,839.84
600 <u>Supplies</u>				
610 General Supplies				433.72
Total Supplies				\$433.72
Total 2540 Printing, Publishing and Duplicating Services				\$26,273.56

LEA : 116496503 Shamokin Area SD

Printed 11/25/2020 9:18:39 AM

General Fund (10)				
2590 Other Support Services – Business	<u>Elementary</u>	<u>Secondary</u>	<u>Federal</u>	<u>Total</u>
300 <u>Purchased Professional and Technical Services</u>				
322 Professional Educational Services – lus				4,200.00
Total Purchased Professional and Technical Services				\$4,200.00
500 <u>Other Purchased Services</u>				
549 Other Advertising/Public Relations				2,233.10
Total Other Purchased Services				\$2,233.10
Total 2590 Other Support Services – Business				\$6,433.10

LEA : 116496503 Shamokin Area SD

Printed 11/25/2020 9:18:39 AM

General Fund (10)

2600 Operation and Maintenance of Plant Services	Elementary	Secondary	Federal	Total
100 <u>Personnel Services – Salaries</u>				
100 Personnel Services – Salaries				1,123,445.64
Total Personnel Services – Salaries				\$1,123,445.64
200 <u>Personnel Services – Employee Benefits</u>				
210 Group Insurance – Contracted Provider				322,595.01
220 Social Security Contributions				86,914.53
230 PSERS Retirement Contributions				377,884.38
250 Unemployment Compensation				3,670.91
260 Workers' Compensation				10,187.43
291 Other Retirement Plans				2,409.61
292 Health Savings Accounts				44,625.00
Total Personnel Services – Employee Benefits				\$848,286.87
300 <u>Purchased Professional and Technical Services</u>				
330 Other Professional Services				877.80
Total Purchased Professional and Technical Services				\$877.80
400 <u>Purchased Property Services</u>				
410 Cleaning Services				55,053.36
420 Utility Services				88,773.35
430 Repairs and Maintenance Services				30,865.30
440 Rentals				3,239.57
450 Construction Services				9,635.00
490 Other Purchased Property Services				8,458.00
Total Purchased Property Services				\$196,024.58
500 <u>Other Purchased Services</u>				
522 Automotive Liability Insurance				22,960.00
523 General Property and Liability Insurance				111,704.40
529 Other Insurance				11,857.45
530 Communications				22,336.97
Total Other Purchased Services				\$168,858.82
600 <u>Supplies</u>				
610 General Supplies	52,687.23	145,503.91	140.00	198,331.14
620 Energy				277,040.60
640 Books and Periodicals				287.10
650 Supplies & Fees – Technology Related				1,275.00
Total Supplies	\$52,687.23	\$145,503.91	\$140.00	\$476,933.84
700 <u>Property</u>				
752 Capital Equipment – Original and Additional				2,020.00
762 Capitalized Equipment - Replacement				3,299.99
Total Property				\$5,319.99
800 <u>Other Objects</u>				
810 Dues and Fees				252.00

LEA : 116496503 Shamokin Area SD

Printed 11/25/2020 9:18:39 AM

General Fund (10)

2600 Operation and Maintenance of Plant Services

	<u>Elementary</u>	<u>Secondary</u>	<u>Federal</u>	<u>Total</u>
Total Other Objects				\$252.00
Total 2600 Operation and Maintenance of Plant Services	\$52,687.23	\$145,503.91	\$140.00	\$2,819,999.54

LEA : 116496503 Shamokin Area SD

Printed 11/25/2020 9:18:39 AM

General Fund (10)

2610 Supervision of Operation and Maintenance of Plant Services	<u>Elementary</u>	<u>Secondary</u>	<u>Federal</u>	<u>Total</u>
100 <u>Personnel Services – Salaries</u>				
100 Personnel Services – Salaries				86,578.62
Total Personnel Services – Salaries				\$86,578.62
200 <u>Personnel Services – Employee Benefits</u>				
210 Group Insurance – Contracted Provider				28,074.70
220 Social Security Contributions				6,554.61
230 PSERS Retirement Contributions				27,541.79
260 Workers' Compensation				779.13
291 Other Retirement Plans				2,409.61
Total Personnel Services – Employee Benefits				\$65,359.84
500 <u>Other Purchased Services</u>				
530 Communications				788.38
Total Other Purchased Services				\$788.38
800 <u>Other Objects</u>				
810 Dues and Fees				217.00
Total Other Objects				\$217.00
Total 2610 Supervision of Operation and Maintenance of Plant Services				\$152,943.84

LEA : 116496503 Shamokin Area SD

Printed 11/25/2020 9:18:39 AM

General Fund (10)				
2611 Supervision of Operation and Maintenance of Plant Services – Head of Component	<u>Elementary</u>	<u>Secondary</u>	<u>Federal</u>	<u>Total</u>
100 <u>Personnel Services – Salaries</u>				
100 Personnel Services – Salaries				86,578.62
Total Personnel Services – Salaries				\$86,578.62
200 <u>Personnel Services – Employee Benefits</u>				
210 Group Insurance – Contracted Provider				28,074.70
220 Social Security Contributions				6,554.61
230 PSERS Retirement Contributions				27,541.79
260 Workers' Compensation				779.13
291 Other Retirement Plans				2,409.61
Total Personnel Services – Employee Benefits				\$65,359.84
500 <u>Other Purchased Services</u>				
530 Communications				788.38
Total Other Purchased Services				\$788.38
800 <u>Other Objects</u>				
810 Dues and Fees				217.00
Total Other Objects				\$217.00
Total 2611 Supervision of Operation and Maintenance of Plant Services – Head of Component				\$152,943.84

LEA : 116496503 Shamokin Area SD

Printed 11/25/2020 9:18:39 AM

General Fund (10)				
2620 Operation of Buildings Services	<u>Elementary</u>	<u>Secondary</u>	<u>Federal</u>	<u>Total</u>
100 <u>Personnel Services – Salaries</u>				
100 Personnel Services – Salaries				745,515.13
Total Personnel Services – Salaries				\$745,515.13
200 <u>Personnel Services – Employee Benefits</u>				
210 Group Insurance – Contracted Provider				275,637.29
220 Social Security Contributions				57,426.32
230 PSERS Retirement Contributions				250,252.09
250 Unemployment Compensation				3,789.56
260 Workers' Compensation				6,789.58
292 Health Savings Accounts				41,925.00
Total Personnel Services – Employee Benefits				\$635,819.84
300 <u>Purchased Professional and Technical Services</u>				
330 Other Professional Services				877.80
Total Purchased Professional and Technical Services				\$877.80
400 <u>Purchased Property Services</u>				
410 Cleaning Services				40,692.28
420 Utility Services				88,773.35
430 Repairs and Maintenance Services				25,762.96
440 Rentals				198.00
490 Other Purchased Property Services				8,458.00
Total Purchased Property Services				\$163,884.59
500 <u>Other Purchased Services</u>				
523 General Property and Liability Insurance				111,704.40
529 Other Insurance				11,857.45
530 Communications				15,852.17
Total Other Purchased Services				\$139,414.02
600 <u>Supplies</u>				
610 General Supplies	51,364.46	113,561.50	140.00	165,065.96
620 Energy				261,964.35
640 Books and Periodicals				287.10
Total Supplies	\$51,364.46	\$113,561.50	\$140.00	\$427,317.41
700 <u>Property</u>				
752 Capital Equipment – Original and Additional				2,020.00
Total Property				\$2,020.00
800 <u>Other Objects</u>				
810 Dues and Fees				35.00
Total Other Objects				\$35.00
Total 2620 Operation of Buildings Services	\$51,364.46	\$113,561.50	\$140.00	\$2,114,883.79

LEA : 116496503 Shamokin Area SD

Printed 11/25/2020 9:18:39 AM

General Fund (10)				
2630 Care and Upkeep of Grounds Services	<u>Elementary</u>	<u>Secondary</u>	<u>Federal</u>	<u>Total</u>
100 <u>Personnel Services – Salaries</u>				
100 Personnel Services – Salaries				44,178.00
Total Personnel Services – Salaries				\$44,178.00
200 <u>Personnel Services – Employee Benefits</u>				
210 Group Insurance – Contracted Provider				18,812.14
220 Social Security Contributions				3,336.43
230 PSERS Retirement Contributions				14,515.07
260 Workers' Compensation				397.60
292 Health Savings Accounts				2,700.00
Total Personnel Services – Employee Benefits				\$39,761.24
400 <u>Purchased Property Services</u>				
410 Cleaning Services				14,361.08
430 Repairs and Maintenance Services				484.95
440 Rentals				3,041.57
450 Construction Services				9,635.00
Total Purchased Property Services				\$27,522.60
500 <u>Other Purchased Services</u>				
530 Communications				172.96
Total Other Purchased Services				\$172.96
600 <u>Supplies</u>				
610 General Supplies	70.99	25,864.46		25,935.45
620 Energy				1,261.69
Total Supplies	\$70.99	\$25,864.46		\$27,197.14
700 <u>Property</u>				
762 Capitalized Equipment - Replacement				3,299.99
Total Property				\$3,299.99
Total 2630 Care and Upkeep of Grounds Services	\$70.99	\$25,864.46		\$142,131.93

LEA : 116496503 Shamokin Area SD

Printed 11/25/2020 9:18:39 AM

General Fund (10)

2640 Care and Upkeep of Equipment Services	<u>Elementary</u>	<u>Secondary</u>	<u>Federal</u>	<u>Total</u>
400 <u>Purchased Property Services</u>				
430 Repairs and Maintenance Services				261.43
Total Purchased Property Services				\$261.43
600 <u>Supplies</u>				
610 General Supplies		867.36		867.36
Total Supplies		\$867.36		\$867.36
Total 2640 Care and Upkeep of Equipment Services		\$867.36		\$1,128.79

LEA : 116496503 Shamokin Area SD

Printed 11/25/2020 9:18:39 AM

General Fund (10)				
2650 Vehicle Operation and Maintenance Services (Other Than Student Transportation Vehicles)	<u>Elementary</u>	<u>Secondary</u>	<u>Federal</u>	<u>Total</u>
400 <u>Purchased Property Services</u>				
430 Repairs and Maintenance Services				4,355.96
Total Purchased Property Services				\$4,355.96
500 <u>Other Purchased Services</u>				
522 Automotive Liability Insurance				22,960.00
Total Other Purchased Services				\$22,960.00
600 <u>Supplies</u>				
610 General Supplies		3,922.37		3,922.37
620 Energy				13,814.56
Total Supplies		\$3,922.37		\$17,736.93
Total 2650 Vehicle Operation and Maintenance Services (Other Than Student Transportation Vehicles)		\$3,922.37		\$45,052.89

LEA : 116496503 Shamokin Area SD

Printed 11/25/2020 9:18:39 AM

General Fund (10)				
2660 Safety and Security Services	<u>Elementary</u>	<u>Secondary</u>	<u>Federal</u>	<u>Total</u>
100 <u>Personnel Services – Salaries</u>				
100 Personnel Services – Salaries				247,173.89
Total Personnel Services – Salaries				\$247,173.89
200 <u>Personnel Services – Employee Benefits</u>				
210 Group Insurance – Contracted Provider				70.88
220 Social Security Contributions				19,597.17
230 PSERS Retirement Contributions				85,575.43
250 Unemployment Compensation				(118.65)
260 Workers' Compensation				2,221.12
Total Personnel Services – Employee Benefits				\$107,345.95
500 <u>Other Purchased Services</u>				
530 Communications				5,523.46
Total Other Purchased Services				\$5,523.46
600 <u>Supplies</u>				
610 General Supplies	1,251.78	1,288.22		2,540.00
650 Supplies & Fees – Technology Related				1,275.00
Total Supplies	\$1,251.78	\$1,288.22		\$3,815.00
Total 2660 Safety and Security Services	\$1,251.78	\$1,288.22		\$363,858.30

LEA : 116496503 Shamokin Area SD

Printed 11/25/2020 9:18:39 AM

General Fund (10)

2700 Student Transportation Services	<u>Elementary</u>	<u>Secondary</u>	<u>Federal</u>	<u>Total</u>
300 <u>Purchased Professional and Technical Services</u>				
330 Other Professional Services				150.00
390 Other Purchased Professional and Technical Services				3,442.00
Total Purchased Professional and Technical Services				\$3,592.00
500 <u>Other Purchased Services</u>				
513 Contracted Carriers				1,145,790.97
516 Student Transportation Services From the IU				67,267.80
522 Automotive Liability Insurance				(1,858.00)
Total Other Purchased Services				\$1,211,200.77
Total 2700 Student Transportation Services				\$1,214,792.77

LEA : 116496503 Shamokin Area SD

Printed 11/25/2020 9:18:39 AM

General Fund (10)				
2720 Vehicle Operation Services	<u>Elementary</u>	<u>Secondary</u>	<u>Federal</u>	<u>Total</u>
300 <u>Purchased Professional and Technical Services</u>				
330 Other Professional Services				150.00
390 Other Purchased Professional and Technical Services				3,442.00
Total Purchased Professional and Technical Services				\$3,592.00
500 <u>Other Purchased Services</u>				
513 Contracted Carriers				1,004,955.37
516 Student Transportation Services From the IU				67,267.80
Total Other Purchased Services				\$1,072,223.17
Total 2720 Vehicle Operation Services				\$1,075,815.17

LEA : 116496503 Shamokin Area SD

Printed 11/25/2020 9:18:39 AM

General Fund (10)				
2750 Nonpublic Transportation	<u>Elementary</u>	<u>Secondary</u>	<u>Federal</u>	<u>Total</u>
500 <u>Other Purchased Services</u>				
513 Contracted Carriers				140,835.60
Total Other Purchased Services				\$140,835.60
Total 2750 Nonpublic Transportation				\$140,835.60

LEA : 116496503 Shamokin Area SD

Printed 11/25/2020 9:18:39 AM

General Fund (10)

2790 Other Student Transportation Services	<u>Elementary</u>	<u>Secondary</u>	<u>Federal</u>	<u>Total</u>
500 <u>Other Purchased Services</u>				
522 Automotive Liability Insurance				(1,858.00)
Total Other Purchased Services				(\$1,858.00)
Total 2790 Other Student Transportation Services				(\$1,858.00)

LEA : 116496503 Shamokin Area SD

Printed 11/25/2020 9:18:39 AM

General Fund (10)					
2800 Support Services – Central		Elementary	Secondary	Federal	Total
100 Personnel Services – Salaries					
100 Personnel Services – Salaries				10,804.02	151,263.29
Total Personnel Services – Salaries				\$10,804.02	\$151,263.29
200 Personnel Services – Employee Benefits					
210 Group Insurance – Contracted Provider				2,956.06	55,666.90
220 Social Security Contributions				829.88	11,419.72
230 PSERS Retirement Contributions				3,704.73	49,008.98
240 Tuition Reimbursement					4,599.00
260 Workers' Compensation				97.24	1,361.37
270 Group Insurance – Self-Insurance					20,481.00
291 Other Retirement Plans					635.77
292 Health Savings Accounts					2,700.00
Total Personnel Services – Employee Benefits				\$7,587.91	\$145,872.74
300 Purchased Professional and Technical Services					
360 Employee Training and Development Services				1,039.97	6,353.97
Total Purchased Professional and Technical Services				\$1,039.97	\$6,353.97
400 Purchased Property Services					
430 Repairs and Maintenance Services					8,256.77
440 Rentals					10,771.89
Total Purchased Property Services					\$19,028.66
500 Other Purchased Services					
530 Communications					650.36
580 Travel					877.48
Total Other Purchased Services					\$1,527.84
600 Supplies					
610 General Supplies					109,102.46
650 Supplies & Fees – Technology Related					19,029.68
Total Supplies					\$128,132.14
700 Property					
756 Capitalized Technology Equipment – Original					(10,394.91)
758 Capitalized Technology Software - Original					43,744.98
766 Capitalized Technology Equipment – Replacement					22,193.10
Total Property					\$55,543.17
800 Other Objects					
810 Dues and Fees				100.00	226.14
Total Other Objects				\$100.00	\$226.14
Total 2800 Support Services – Central				\$19,531.90	\$507,947.95

LEA : 116496503 Shamokin Area SD

Printed 11/25/2020 9:18:39 AM

General Fund (10)				
2810 Planning, Research, Development and Evaluation Services	<u>Elementary</u>	<u>Secondary</u>	<u>Federal</u>	<u>Total</u>
100 <u>Personnel Services – Salaries</u>				
100 Personnel Services – Salaries				140,459.27
Total Personnel Services – Salaries				\$140,459.27
200 <u>Personnel Services – Employee Benefits</u>				
210 Group Insurance – Contracted Provider				52,710.84
220 Social Security Contributions				10,589.84
230 PSERS Retirement Contributions				45,304.25
260 Workers' Compensation				1,264.13
270 Group Insurance – Self-Insurance				20,481.00
291 Other Retirement Plans				635.77
292 Health Savings Accounts				2,700.00
Total Personnel Services – Employee Benefits				\$133,685.83
400 <u>Purchased Property Services</u>				
430 Repairs and Maintenance Services				8,256.77
440 Rentals				10,771.89
Total Purchased Property Services				\$19,028.66
500 <u>Other Purchased Services</u>				
530 Communications				650.36
Total Other Purchased Services				\$650.36
600 <u>Supplies</u>				
610 General Supplies				109,102.46
650 Supplies & Fees – Technology Related				19,029.68
Total Supplies				\$128,132.14
700 <u>Property</u>				
756 Capitalized Technology Equipment – Original				(10,394.91)
758 Capitalized Technology Software - Original				43,744.98
766 Capitalized Technology Equipment – Replacement				22,193.10
Total Property				\$55,543.17
800 <u>Other Objects</u>				
810 Dues and Fees				126.14
Total Other Objects				\$126.14
Total 2810 Planning, Research, Development and Evaluation Services				\$477,625.57

LEA : 116496503 Shamokin Area SD

Printed 11/25/2020 9:18:39 AM

General Fund (10)				
2830 Staff Services				
	<u>Elementary</u>	<u>Secondary</u>	<u>Federal</u>	<u>Total</u>
200 <u>Personnel Services – Employee Benefits</u>				
240 Tuition Reimbursement				4,599.00
Total Personnel Services – Employee Benefits				\$4,599.00
300 <u>Purchased Professional and Technical Services</u>				
360 Employee Training and Development Services			1,039.97	6,353.97
Total Purchased Professional and Technical Services			\$1,039.97	\$6,353.97
500 <u>Other Purchased Services</u>				
580 Travel				877.48
Total Other Purchased Services				\$877.48
Total 2830 Staff Services			\$1,039.97	\$11,830.45

LEA : 116496503 Shamokin Area SD

Printed 11/25/2020 9:18:39 AM

General Fund (10)				
2834 Staff Development Services – Non-Instructional, Certified Staff Only	<u>Elementary</u>	<u>Secondary</u>	<u>Federal</u>	<u>Total</u>
200 <u>Personnel Services – Employee Benefits</u>				
240 Tuition Reimbursement				4,599.00
Total Personnel Services – Employee Benefits				\$4,599.00
300 <u>Purchased Professional and Technical Services</u>				
360 Employee Training and Development Services			100.00	564.00
Total Purchased Professional and Technical Services			\$100.00	\$564.00
500 <u>Other Purchased Services</u>				
580 Travel				327.48
Total Other Purchased Services				\$327.48
Total 2834 Staff Development Services – Non-Instructional, Certified Staff Only			\$100.00	\$5,490.48

LEA : 116496503 Shamokin Area SD

Printed 11/25/2020 9:18:39 AM

General Fund (10)

2836 Staff Development Services – Non-Instructional, Non-Certified Staff Only	<u>Elementary</u>	<u>Secondary</u>	<u>Federal</u>	<u>Total</u>
300 <u>Purchased Professional and Technical Services</u>				
360 Employee Training and Development Services			939.97	5,789.97
Total Purchased Professional and Technical Services			\$939.97	\$5,789.97
500 <u>Other Purchased Services</u>				
580 Travel				550.00
Total Other Purchased Services				\$550.00
Total 2836 Staff Development Services – Non-Instructional, Non-Certified Staff Only			\$939.97	\$6,339.97

LEA : 116496503 Shamokin Area SD

Printed 11/25/2020 9:18:39 AM

General Fund (10)

2850 State and Federal Agency Liaison Services	<u>Elementary</u>	<u>Secondary</u>	<u>Federal</u>	<u>Total</u>
100 <u>Personnel Services – Salaries</u>				
100 Personnel Services – Salaries			10,804.02	10,804.02
Total Personnel Services – Salaries			\$10,804.02	\$10,804.02
200 <u>Personnel Services – Employee Benefits</u>				
210 Group Insurance – Contracted Provider			2,956.06	2,956.06
220 Social Security Contributions			829.88	829.88
230 PSERS Retirement Contributions			3,704.73	3,704.73
260 Workers' Compensation			97.24	97.24
Total Personnel Services – Employee Benefits			\$7,587.91	\$7,587.91
800 <u>Other Objects</u>				
810 Dues and Fees			100.00	100.00
Total Other Objects			\$100.00	\$100.00
Total 2850 State and Federal Agency Liaison Services			\$18,491.93	\$18,491.93

LEA : 116496503 Shamokin Area SD

Printed 11/25/2020 9:18:46 AM

General Fund (10)	
3000 Operation of Non-Instructional Services	<u>Total</u>
100 <u>Personnel Services – Salaries</u>	
100 Personnel Services – Salaries	259,990.97
Total Personnel Services – Salaries	\$259,990.97
200 <u>Personnel Services – Employee Benefits</u>	
210 Group Insurance – Contracted Provider	29,250.13
220 Social Security Contributions	19,794.76
230 PSERS Retirement Contributions	50,572.42
250 Unemployment Compensation	590.47
260 Workers' Compensation	2,345.77
292 Health Savings Accounts	2,177.18
Total Personnel Services – Employee Benefits	\$104,730.73
300 <u>Purchased Professional and Technical Services</u>	
330 Other Professional Services	36,347.00
390 Other Purchased Professional and Technical Services	35,000.00
Total Purchased Professional and Technical Services	\$71,347.00
400 <u>Purchased Property Services</u>	
410 Cleaning Services	1,326.25
430 Repairs and Maintenance Services	7,104.20
440 Rentals	2,975.00
Total Purchased Property Services	\$11,405.45
500 <u>Other Purchased Services</u>	
510 Student Transportation Services	25,837.22
520 Insurance – General	16,600.00
530 Communications	601.43
580 Travel	1,956.84
Total Other Purchased Services	\$44,995.49
600 <u>Supplies</u>	
610 General Supplies	73,075.26
630 Food	104.97
640 Books and Periodicals	1,612.22
Total Supplies	\$74,792.45
700 <u>Property</u>	
752 Capital Equipment – Original and Additional	7,999.00
Total Property	\$7,999.00
800 <u>Other Objects</u>	
810 Dues and Fees	9,949.00
860 Grants To Municipal and Community Service Organizations	2,000.00
890 Miscellaneous Expenditures	300.09
Total Other Objects	\$12,249.09
Total 3000 Operation of Non-Instructional Services	\$587,510.18

LEA : 116496503 Shamokin Area SD

Printed 11/25/2020 9:18:46 AM

General Fund (10)				
3200 Student Activities	<u>Elementary</u>	<u>Secondary</u>	<u>Federal</u>	<u>Total</u>
100 <u>Personnel Services – Salaries</u>				
100 Personnel Services – Salaries				257,483.20
Total Personnel Services – Salaries				\$257,483.20
200 <u>Personnel Services – Employee Benefits</u>				
210 Group Insurance – Contracted Provider				29,250.13
220 Social Security Contributions				19,603.29
230 PSERS Retirement Contributions				49,712.54
250 Unemployment Compensation				590.47
260 Workers' Compensation				2,323.21
292 Health Savings Accounts				2,177.18
Total Personnel Services – Employee Benefits				\$103,656.82
300 <u>Purchased Professional and Technical Services</u>				
330 Other Professional Services				36,347.00
390 Other Purchased Professional and Technical Services				35,000.00
Total Purchased Professional and Technical Services				\$71,347.00
400 <u>Purchased Property Services</u>				
410 Cleaning Services				1,326.25
430 Repairs and Maintenance Services				7,104.20
440 Rentals				2,975.00
Total Purchased Property Services				\$11,405.45
500 <u>Other Purchased Services</u>				
510 Student Transportation Services				25,837.22
520 Insurance – General				16,600.00
530 Communications				601.43
580 Travel				1,956.84
Total Other Purchased Services				\$44,995.49
600 <u>Supplies</u>				
610 General Supplies				71,517.22
630 Food				67.97
Total Supplies				\$71,585.19
700 <u>Property</u>				
752 Capital Equipment – Original and Additional				7,999.00
Total Property				\$7,999.00
800 <u>Other Objects</u>				
810 Dues and Fees				9,949.00
890 Miscellaneous Expenditures				300.09
Total Other Objects				\$10,249.09
Total 3200 Student Activities				\$578,721.24

LEA : 116496503 Shamokin Area SD

Printed 11/25/2020 9:18:46 AM

General Fund (10)				
3300 Community Services				
	<u>Elementary</u>	<u>Secondary</u>	<u>Federal</u>	<u>Total</u>
100 <u>Personnel Services – Salaries</u>				
100 Personnel Services – Salaries			2,507.77	2,507.77
Total Personnel Services – Salaries			\$2,507.77	\$2,507.77
200 <u>Personnel Services – Employee Benefits</u>				
220 Social Security Contributions			191.47	191.47
230 PSERS Retirement Contributions			859.88	859.88
260 Workers’ Compensation			22.56	22.56
Total Personnel Services – Employee Benefits			\$1,073.91	\$1,073.91
600 <u>Supplies</u>				
610 General Supplies			1,376.60	1,376.60
630 Food			37.00	37.00
640 Books and Periodicals			1,612.22	1,612.22
Total Supplies			\$3,025.82	\$3,025.82
800 <u>Other Objects</u>				
860 Grants To Municipal and Community Service Organizations				2,000.00
Total Other Objects				\$2,000.00
Total 3300 Community Services			\$6,607.50	\$8,607.50

LEA : 116496503 Shamokin Area SD

Printed 11/25/2020 9:18:46 AM

General Fund (10)				
3400 Scholarships and Awards	<u>Elementary</u>	<u>Secondary</u>	<u>Federal</u>	<u>Total</u>
600 <u>Supplies</u>				
610 General Supplies				181.44
Total Supplies				\$181.44
Total 3400 Scholarships and Awards				\$181.44

LEA : 116496503 Shamokin Area SD

Printed 11/25/2020 9:18:50 AM

General Fund (10)

5000 Other Expenditures and Financing Uses		<u>Total</u>
800 <u>Other Objects</u>		
830 Interest		197,849.64
880 Refunds of Prior Years' Receipts		107.80
Total Other Objects		\$197,957.44
900 <u>Other Uses of Funds</u>		
910 Redemption of Principal		210,000.00
Total Other Uses of Funds		\$210,000.00
Total 5000 Other Expenditures and Financing Uses		\$407,957.44

LEA : 116496503 Shamokin Area SD

Printed 11/25/2020 9:18:50 AM

General Fund (10)

5100 Debt Service / Other Expenditures and Financing Uses	<u>Elementary</u>	<u>Secondary</u>	<u>Federal</u>	<u>Total</u>
800 <u>Other Objects</u>				
830 Interest			104,323.38	197,849.64
880 Refunds of Prior Years' Receipts				107.80
Total Other Objects			\$104,323.38	\$197,957.44
900 <u>Other Uses of Funds</u>				
910 Redemption of Principal				210,000.00
Total Other Uses of Funds				\$210,000.00
Total 5100 Debt Service / Other Expenditures and Financing Uses			\$104,323.38	\$407,957.44

LEA : 116496503 Shamokin Area SD

Printed 11/25/2020 9:18:50 AM

General Fund (10)

5110 Debt Service	<u>Elementary</u>	<u>Secondary</u>	<u>Federal</u>	<u>Total</u>
800 <u>Other Objects</u>				
830 Interest			104,323.38	197,849.64
Total Other Objects			\$104,323.38	\$197,849.64
900 <u>Other Uses of Funds</u>				
910 Redemption of Principal				210,000.00
Total Other Uses of Funds				\$210,000.00
Total 5110 Debt Service			\$104,323.38	\$407,849.64

LEA : 116496503 Shamokin Area SD

Printed 11/25/2020 9:18:50 AM

General Fund (10)

5130 Refund of Prior Year Revenues / Receipts	<u>Elementary</u>	<u>Secondary</u>	<u>Federal</u>	<u>Total</u>
800 <u>Other Objects</u>				
880 Refunds of Prior Years' Receipts				107.80
Total Other Objects				\$107.80
Total 5130 Refund of Prior Year Revenues / Receipts				\$107.80

LEA : 116496503 Shamokin Area SD

Printed 11/25/2020 9:18:42 AM

Capital Reserve Fund - § 1431 (32)

		<u>Total</u>
2000 Support Services		
400 <u>Purchased Property Services</u>		
420 Utility Services		2,325.00
430 Repairs and Maintenance Services		60,765.12
Total Purchased Property Services		\$63,090.12
800 <u>Other Objects</u>		
810 Dues and Fees		780.00
Total Other Objects		\$780.00
Total 2000 Support Services		\$63,870.12

LEA : 116496503 Shamokin Area SD

Printed 11/25/2020 9:18:42 AM

Capital Reserve Fund - § 1431 (32)

2500 Support Services – Business

800 Other Objects

	<u>Elementary</u>	<u>Secondary</u>	<u>Federal</u>	<u>Total</u>
810 Dues and Fees				780.00
Total Other Objects				\$780.00
Total 2500 Support Services – Business				\$780.00

LEA : 116496503 Shamokin Area SD

Printed 11/25/2020 9:18:42 AM

Capital Reserve Fund - § 1431 (32)

2510 Fiscal Services	<u>Elementary</u>	<u>Secondary</u>	<u>Federal</u>	<u>Total</u>
800 <u>Other Objects</u>				
810 Dues and Fees				780.00
Total Other Objects				\$780.00
Total 2510 Fiscal Services				\$780.00

LEA : 116496503 Shamokin Area SD

Printed 11/25/2020 9:18:42 AM

Capital Reserve Fund - § 1431 (32)

2519 Other Fiscal Services

	<u>Elementary</u>	<u>Secondary</u>	<u>Federal</u>	<u>Total</u>
800 <u>Other Objects</u>				
810 Dues and Fees				780.00
Total Other Objects				\$780.00
Total 2519 Other Fiscal Services				\$780.00

LEA : 116496503 Shamokin Area SD

Printed 11/25/2020 9:18:42 AM

Capital Reserve Fund - § 1431 (32)

2600 Operation and Maintenance of Plant Services

<u>Elementary</u>	<u>Secondary</u>	<u>Federal</u>	<u>Total</u>
-------------------	------------------	----------------	--------------

400 Purchased Property Services

420 Utility Services			2,325.00
----------------------	--	--	----------

430 Repairs and Maintenance Services			60,765.12
--------------------------------------	--	--	-----------

Total Purchased Property Services			\$63,090.12
Total 2600 Operation and Maintenance of Plant Services			\$63,090.12

LEA : 116496503 Shamokin Area SD

Printed 11/25/2020 9:18:42 AM

Capital Reserve Fund - § 1431 (32)				
2620 Operation of Buildings Services	<u>Elementary</u>	<u>Secondary</u>	<u>Federal</u>	<u>Total</u>
400 <u>Purchased Property Services</u>				
420 Utility Services				2,325.00
430 Repairs and Maintenance Services				41,840.12
Total Purchased Property Services				\$44,165.12
Total 2620 Operation of Buildings Services				\$44,165.12

LEA : 116496503 Shamokin Area SD

Printed 11/25/2020 9:18:42 AM

Capital Reserve Fund - § 1431 (32)				
2630 Care and Upkeep of Grounds Services	<u>Elementary</u>	<u>Secondary</u>	<u>Federal</u>	<u>Total</u>
400 <u>Purchased Property Services</u>				
430 Repairs and Maintenance Services				18,925.00
Total Purchased Property Services				\$18,925.00
Total 2630 Care and Upkeep of Grounds Services				\$18,925.00

LEA : 116496503 Shamokin Area SD

Printed 11/25/2020 9:18:51 AM

Capital Reserve Fund - § 1431 (32)	
5000 Other Expenditures and Financing Uses	<u>Total</u>
800 <u>Other Objects</u>	
830 Interest	56,132.92
Total Other Objects	\$56,132.92
900 <u>Other Uses of Funds</u>	
910 Redemption of Principal	226,000.00
Total Other Uses of Funds	\$226,000.00
Total 5000 Other Expenditures and Financing Uses	\$282,132.92

LEA : 116496503 Shamokin Area SD

Printed 11/25/2020 9:18:51 AM

Capital Reserve Fund - § 1431 (32)

5100 Debt Service / Other Expenditures and Financing Uses	<u>Elementary</u>	<u>Secondary</u>	<u>Federal</u>	<u>Total</u>
800 <u>Other Objects</u>				
830 Interest			56,132.92	56,132.92
Total Other Objects			\$56,132.92	\$56,132.92
900 <u>Other Uses of Funds</u>				
910 Redemption of Principal			226,000.00	226,000.00
Total Other Uses of Funds			\$226,000.00	\$226,000.00
Total 5100 Debt Service / Other Expenditures and Financing Uses			\$282,132.92	\$282,132.92

LEA : 116496503 Shamokin Area SD

Printed 11/25/2020 9:18:51 AM

Capital Reserve Fund - § 1431 (32)

5110 Debt Service	<u>Elementary</u>	<u>Secondary</u>	<u>Federal</u>	<u>Total</u>
800 <u>Other Objects</u>				
830 Interest			56,132.92	56,132.92
Total Other Objects			\$56,132.92	\$56,132.92
900 <u>Other Uses of Funds</u>				
910 Redemption of Principal			226,000.00	226,000.00
Total Other Uses of Funds			\$226,000.00	\$226,000.00
Total 5110 Debt Service			\$282,132.92	\$282,132.92

LEA : 116496503 Shamokin Area SD

Printed 11/25/2020 9:19:05 AM

	General Fund(10)	Student Sponsored Activity Fund(21)	Public Purpose Trust(27)	Other Compt Approved (28)	Athletic / Activity(29)
1000 Instruction					
1100 Regular Programs - Elementary / Secondary	13,698,771.96				
1200 Special Programs - Elementary / Secondary	5,389,711.82				
1300 Vocational Education	1,435,590.67				
1400 Other Instructional Programs - Elementary / Secondary	444,281.57				
1500 Nonpublic School Programs	37,505.78				
1800 Pre-Kindergarten	386,571.27				
Total Instruction	\$21,392,433.07				
2000 Support Services					
2100 Support Services - Students	597,113.95				
2200 Support Services - Instructional Staff	738,065.54				
2300 Support Services - Administration	1,624,162.67				
2400 Support Services - Pupil Health	448,652.97				
2500 Support Services - Business	1,960,773.42				
2600 Operation and Maintenance of Plant Services	2,819,999.54				
2700 Student Transportation Services	1,214,792.77				
2800 Support Services - Central	507,947.95				
Total Support Services	\$9,911,508.81				
3000 Operation of Non-Instructional Services					
3200 Student Activities	578,721.24				
3300 Community Services	8,607.50				
3400 Scholarships and Awards	181.44				
Total Operation of Non-Instructional Services	\$587,510.18				
5000 Other Expenditures and Financing Uses					
5100 Debt Service / Other Expenditures and Financing Uses	407,957.44				
Total Other Expenditures and Financing Uses	\$407,957.44				
TOTAL ACTUAL EXPENDITURES & OTHER FINANCING USES	\$32,299,409.50				

LEA : 116496503 Shamokin Area SD

Printed 11/25/2020 9:19:05 AM

	<u>Capital Reserve (690.1850)(31)</u>	<u>Capital Reserve (1431)(32)</u>	<u>Other Capital Projects Fund(39)</u>	<u>Debt Service(40)</u>	<u>Permanent(90)</u>
1000 <u>Instruction</u>					
1100 Regular Programs - Elementary / Secondary					
1200 Special Programs - Elementary / Secondary					
1300 Vocational Education					
1400 Other Instructional Programs - Elementary / Secondary					
1500 Nonpublic School Programs					
1800 Pre-Kindergarten					
Total Instruction					
2000 <u>Support Services</u>					
2100 Support Services - Students					
2200 Support Services - Instructional Staff					
2300 Support Services - Administration					
2400 Support Services - Pupil Health					
2500 Support Services - Business				780.00	
2600 Operation and Maintenance of Plant Services				63,090.12	
2700 Student Transportation Services					
2800 Support Services - Central					
Total Support Services				\$63,870.12	
3000 <u>Operation of Non-Instructional Services</u>					
3200 Student Activities					
3300 Community Services					
3400 Scholarships and Awards					
Total Operation of Non-Instructional Services					
5000 <u>Other Expenditures and Financing Uses</u>					
5100 Debt Service / Other Expenditures and Financing Uses				282,132.92	
Total Other Expenditures and Financing Uses				\$282,132.92	
TOTAL ACTUAL EXPENDITURES & OTHER FINANCING USES				\$346,003.04	

	<u>Total</u>
1000 <u>Instruction</u>	
1100 Regular Programs - Elementary / Secondary	13,698,771.96
1200 Special Programs - Elementary / Secondary	5,389,711.82
1300 Vocational Education	1,435,590.67
1400 Other Instructional Programs - Elementary / Secondary	444,281.57
1500 Nonpublic School Programs	37,505.78
1800 Pre-Kindergarten	386,571.27
Total Instruction	\$21,392,433.07
2000 <u>Support Services</u>	
2100 Support Services - Students	597,113.95
2200 Support Services - Instructional Staff	738,065.54
2300 Support Services - Administration	1,624,162.67
2400 Support Services - Pupil Health	448,652.97
2500 Support Services - Business	1,961,553.42
2600 Operation and Maintenance of Plant Services	2,883,089.66
2700 Student Transportation Services	1,214,792.77
2800 Support Services - Central	507,947.95
Total Support Services	\$9,975,378.93
3000 <u>Operation of Non-Instructional Services</u>	
3200 Student Activities	578,721.24
3300 Community Services	8,607.50
3400 Scholarships and Awards	181.44
Total Operation of Non-Instructional Services	\$587,510.18
5000 <u>Other Expenditures and Financing Uses</u>	
5100 Debt Service / Other Expenditures and Financing Uses	690,090.36
Total Other Expenditures and Financing Uses	\$690,090.36
TOTAL ACTUAL EXPENDITURES & OTHER FINANCING USES	\$32,645,412.54

LEA : 116496503 Shamokin Area SD

Printed 11/25/2020 9:19:14 AM

PSERS Salary Data (Salary Data should relate to the General Fund only)

Amount	Description	Amount
	Total Salary Base for salaries subject to PSERS withholding	11,222,955.83
	Total Federally Funded salaries subject to PSERS withholding	1,033,542.32

Title I Expenditure Data

Amount	Description	Amount
	Expenditures Funded with Current Title I Funds	803,950.66
	Expenditures Funded with Carry over Title I Funds	117,193.33
Total Title I Expenditure Data		\$921,143.99

Benefits for Staff Relative to Collective Bargaining Agreements

	OBJECT	COVERED	NOT COVERED	TOTAL
10 General Fund	No Self Insurance data to report			
	211 Medical Insurance	3,765,654.28		3,765,654.28
	212 Dental Insurance	116,098.34		116,098.34
	215 Eye Care Insurance	22,548.09		22,548.09
	216 Prescription Insurance			
	271 Self-Insurance Medical Benefits			
	272 Self-Insurance Dental Benefits			
	275 Self-Insurance Eye Care Benefits			
	276 Self-Insurance Prescription Benefits			
	FUND TOTAL	\$3,904,300.71		\$3,904,300.71
50 Enterprise Fund	No Self Insurance data to report			
	211 Medical Insurance			
	212 Dental Insurance			
	215 Eye Care Insurance			
	216 Prescription Insurance			
	271 Self-Insurance Medical Benefits			
	272 Self-Insurance Dental Benefits			
	275 Self-Insurance Eye Care Benefits			
	276 Self-Insurance Prescription Benefits			
	FUND TOTAL			
60 Internal Service Fund	No Self Insurance data to report			
	211 Medical Insurance			
	212 Dental Insurance			
	215 Eye Care Insurance			
	216 Prescription Insurance			
	271 Self-Insurance Medical Benefits			
	272 Self-Insurance Dental Benefits			
	275 Self-Insurance Eye Care Benefits			
	276 Self-Insurance Prescription Benefits			
	FUND TOTAL			
Total of All Funds		\$3,904,300.71		\$3,904,300.71

LEA : 116496503 Shamokin Area SD

Printed 11/25/2020 9:19:20 AM

Function	Special Education (Prior Year)	Nonspecial Education (Prior Year)	Total (Prior Year)	Special Education (Current Year)	Nonspecial Education (Current Year)	Total (Current Year)
2120 Guidance Services	61,884.73	250,122.85	312,007.58	63,801.71	257,870.78	321,672.49
2140 Psychological Services	22,629.17	91,461.52	114,090.69	24,868.48	100,512.26	125,380.74
2150 Speech Pathology and Audiology Services						
2160 Social Work Services	28,497.34	115,179.25	143,676.59	29,763.60	120,297.12	150,060.72
2260 Instruction and Curriculum Development Services	111,668.10	451,334.94	563,003.04	116,655.03	471,490.88	588,145.91
2350 Legal and Accounting Services	8,893.25	35,944.32	44,837.57	6,155.59	24,879.40	31,034.99
2420 Medical Services	1,221.86	4,938.48	6,160.34	1,002.07	4,050.10	5,052.17
2440 Nursing Services	107,896.34	436,090.45	543,986.79	83,071.15	335,753.14	418,824.29
2700 Student Transportation Services	252,366.33	1,020,002.56	1,272,368.89	240,946.47	973,846.30	1,214,792.77
Total	\$595,057.12	\$2,405,074.37	\$3,000,131.49	\$566,264.10	\$2,288,699.98	\$2,854,964.08

LEA : 116496503 Shamokin Area SD

Printed 11/25/2020 9:19:24 AM

	(PRINCIPAL AMOUNTS ONLY)							
<u>GOVERNMENTAL FUNDS/ ACTIVITIES</u>	Short-Term Borrowing	General Obligation Bonds/Notes	Authority Building Obligations	Other Long-Term Debt	Other Post- Employment Benefits (OPEB)	Compensated Absences	Net Pension Liability	Total
1. Debt at Beginning of Fiscal Year		6,411,000.00			3,051,169.00	415,946.40	41,668,000.00	51,546,115.40
2. Additional Debt Incurred During Year					107,341.00			107,341.00
3. Retirements and Repayments		436,000.00				60,413.65	312,000.00	808,413.65
4. Debt at End of Fiscal Year		5,975,000.00			3,158,510.00	355,532.75	41,356,000.00	50,845,042.75
5. Accreted Interest at End Of Fiscal Year								
6. Total Debt and Accreted Interest		5,975,000.00			3,158,510.00	355,532.75	41,356,000.00	50,845,042.75
7. Current Portion P&I - Due within 1 year		738,540.00				50,000.00		788,540.00
8. Interest Paid during current fiscal year		302,540.00						302,540.00

(PRINCIPAL AMOUNTS ONLY)							
PROPRIETARY FUNDS							
1. Debt at Beginning of Fiscal Year							
2. Additional Debt Incurred During Year							
3. Retirements and Repayments							
4. Debt at End of Fiscal Year							
5. Accreted Interest at End Of Fiscal Year							
6. Total Debt and Accreted Interest							
7. Current Portion P&I - Due within 1 year							
8. Interest Paid during current fiscal year							

LEA : 116496503 Shamokin Area SD

Printed 11/25/2020 9:19:24 AM

Total Principal and Interest Payments Made by Your School - All Funds

Function	Fund		Principal (910)	Principal (920)	Interest (830)	Total (Principal +Interest)	Misc Other Uses (990)
5110	10	General Fund	210,000.00		197,849.64	407,849.64	
5110	20	Special Revenue Funds					
5110	30	Capital Projects Funds	226,000.00		56,132.92	282,132.92	
5110	40	Debt Service Fund					
5110	90	Permanent Fund					
5120	10	General Fund					
5120	20	Special Revenue Funds					
5120	30	Capital Projects Funds					
5120	40	Debt Service Fund					
Total Debt Payments - Governmental Funds			\$436,000.00		\$253,982.56	\$689,982.56	
Function	Fund		Principal (910)	Principal (920)	Interest (830)	Total (Principal +Interest)	
5110	50	Enterprise Fund					
5110	60	Internal Service Fund					
5120	50	Enterprise Fund					
5120	60	Internal Service Fund					
Total Debt Payments - Proprietary Funds							

LEA : 116496503 Shamokin Area SD

Printed 11/25/2020 9:19:24 AM

Debt Details
Governmental Funds/ Activities

Debt Category	Debt Issue Date (MM/YYYY)	Principal Amounts Only				Current Portion Due Within One Year (Principal and Interest)	Interest Paid During Fiscal Year
		Debt at Beginning of Fiscal Year	Additions	Reductions / Repayments	Debt at End of Fiscal Year		
General Obligation Bonds/Notes – CIB	09/2017	3,925,000.00		210,000.00	3,715,000.00	303,526.00	93,526.00
General Obligation Bonds/Notes – CIB	11/2011	2,486,000.00		226,000.00	2,260,000.00	435,014.00	209,014.00
Compensated Absences		415,946.40		60,413.65	355,532.75	50,000.00	
Other Post-Employment Benefits (OPEB)		3,051,169.00	107,341.00		3,158,510.00		
Net Pension Liability		41,668,000.00		312,000.00	41,356,000.00		
Totals for Debt Entered:		\$51,546,115.40	\$107,341.00	\$808,413.65	\$50,845,042.75	\$788,540.00	\$302,540.00

LEA : 116496503 Shamokin Area SD

Printed 11/25/2020 9:19:27 AM

General Fund (10)

Section 1: Tuition/Purchased Services as Reported within Expenditure Detail	Amount
Tuition Reported in General Fund Expenditures 1000-560	3,789,679.08
Purchased Services in General Fund Expenditures 1000-594 and 1000-597	330.14
Section 1 Total	\$3,790,009.22

Section 2: Tuition Paid to Institution Types During Fiscal Year	Tuition Paid For Nonspecial Education	Tuition Paid For Special Education	Total
1 1306 Institutions			
2 Institutionalized Children's Programs		330.14	330.14
3 Juveniles Incarcerated in Adult Facilities			
4 Residential Treatment Facilities			
5 Other Local Education Agencies	101,711.78	58,274.38	159,986.16
6 Brick and Mortar Charter Schools			
7 Cyber Charter Schools	1,585,538.49	560,315.75	2,145,854.24
8 Career and Technology Centers	933,629.24		933,629.24
9 Approved Private Schools		20,475.70	20,475.70
10 PA Chartered Schools for the Deaf and Blind			
11 Private Residential Rehabilitative Institutions	102,653.59	270,650.15	373,303.74
12 Juvenile Detention Centers			
13 Special Program Jointures			
14 Other Tuition Not Included Elsewhere In This Section		156,430.00	156,430.00
Section 2 Total	\$2,723,533.10	\$1,066,476.12	\$3,790,009.22

LEA : 116496503 Shamokin Area SD

Printed 11/25/2020 9:19:30 AM

Food Service / Cafeteria Operations Fund (51)

3000 Operation of Non-Instructional Services		Total
100 <u>Personnel Services – Salaries</u>		
100	Personnel Services – Salaries	71,292.43
Total Personnel Services – Salaries		\$71,292.43
200 <u>Personnel Services – Employee Benefits</u>		
210	Group Insurance – Contracted Provider	35,212.26
220	Social Security Contributions	4,135.40
230	PSERS Retirement Contributions	18,272.26
250	Unemployment Compensation	306.96
260	Workers' Compensation	561.46
Total Personnel Services – Employee Benefits		\$58,488.34
400 <u>Purchased Property Services</u>		
410	Cleaning Services	5,200.00
430	Repairs and Maintenance Services	8,676.56
490	Other Purchased Property Services	82.00
Total Purchased Property Services		\$13,958.56
500 <u>Other Purchased Services</u>		
540	Advertising	1,144.42
570	Food Service Management	474,137.49
Total Other Purchased Services		\$475,281.91
600 <u>Supplies</u>		
610	General Supplies	78,770.45
620	Energy	70,023.54
630	Food	494,951.53
650	Supplies & Fees – Technology Related	1,861.38
Total Supplies		\$645,606.90
700 <u>Property</u>		
740	Depreciation	5,340.00
Total Property		\$5,340.00
Total 3000 Operation of Non-Instructional Services		\$1,269,968.14

LEA : 116496503 Shamokin Area SD

Printed 11/25/2020 9:19:30 AM

Food Service / Cafeteria Operations Fund (51)

3100 Food Services	Elementary	Secondary	Federal	Total
100 <u>Personnel Services – Salaries</u>				
100 Personnel Services – Salaries				71,292.43
Total Personnel Services – Salaries				\$71,292.43
200 <u>Personnel Services – Employee Benefits</u>				
210 Group Insurance – Contracted Provider				35,212.26
220 Social Security Contributions				4,135.40
230 PSERS Retirement Contributions				18,272.26
250 Unemployment Compensation				306.96
260 Workers' Compensation				561.46
Total Personnel Services – Employee Benefits				\$58,488.34
400 <u>Purchased Property Services</u>				
410 Cleaning Services				5,200.00
430 Repairs and Maintenance Services				8,676.56
490 Other Purchased Property Services				82.00
Total Purchased Property Services				\$13,958.56
500 <u>Other Purchased Services</u>				
540 Advertising				1,144.42
570 Food Service Management				474,137.49
Total Other Purchased Services				\$475,281.91
600 <u>Supplies</u>				
610 General Supplies				78,770.45
620 Energy				70,023.54
630 Food				494,951.53
650 Supplies & Fees – Technology Related				1,861.38
Total Supplies				\$645,606.90
700 <u>Property</u>				
740 Depreciation				5,340.00
Total Property				\$5,340.00
Total 3100 Food Services				\$1,269,968.14

	<u>Food Service(51)</u>	<u>Child Care Operations(52)</u>	<u>Other Enterprise(58)</u>	<u>Internal Service(60)</u>	<u>Total</u>
3000 <u>Operation of Non-Instructional Services</u>					
3100 Food Services	1,269,968.14				1,269,968.14
Total Operation of Non-Instructional Services	\$1,269,968.14				\$1,269,968.14
TOTAL ACTUAL EXPENDITURES & OTHER FINANCING USES	\$1,269,968.14				\$1,269,968.14

LEA : 116496503 Shamokin Area SD

Printed 11/25/2020 9:19:44 AM

Fund	School	School Number	Local Personnel	Local Nonpersonnel	State Personnel	State Nonpersonnel	Federal Personnel	Federal Nonpersonnel	Total	Explanation
10										
	Shamokin Area El Sch	7009	7,319,658.52	1,578,124.92	864,063.13	83,162.12	1,415,527.48	41,229.08	11,301,765.25	
	Shamokin Area HS	7893	7,355,252.25	1,616,257.91	272,797.02	51,129.56	236,357.69	9,162.14	9,540,956.57	
	Shamokin Area Intermediate Sch	8283	2,063,139.06	589,616.42	10,066.07	51,642.45	76,529.91	4,071.50	2,795,065.41	
	Shamokin Area MS	7892	2,684,787.50	718,886.84	16,906.42	3,887.98	92,206.68	3,910.35	3,520,585.77	
Total			19,422,837.33	4,502,886.09	1,163,832.64	189,822.11	1,820,621.76	58,373.07	27,158,373.00	

	<u>Nonspecial Education</u>	<u>Special Education</u>
1000 Instruction		
1100 Regular Programs - Elementary / Secondary	25,772.00	12,272.00
Total Instruction	\$25,772.00	\$12,272.00
TOTAL ACTUAL EXPENDITURES & OTHER FINANCING USES	\$25,772.00	\$12,272.00

LEA : 116496503 Shamokin Area SD

Printed 11/25/2020 9:19:50 AM

1000 Instruction

300 <u>Purchased Professional and Technical Services</u>		
322 Professional Educational Services - lus	25,772.00	12,272.00
Total Purchased Professional and Technical Services	\$25,772.00	\$12,272.00
Total 1000 Instruction	\$25,772.00	\$12,272.00

LEA : 116496503 Shamokin Area SD

Printed 11/25/2020 9:19:50 AM

1100 Regular Programs - Elementary / Secondary	<u>Nonspecial Education</u>	<u>Special Education</u>
300 <u>Purchased Professional and Technical Services</u>		
322 Professional Educational Services - Ius	25,772.00	12,272.00
Total Purchased Professional and Technical Services	\$25,772.00	\$12,272.00
Total 1100 Regular Programs - Elementary / Secondary	\$25,772.00	\$12,272.00

LEA : 116496503 Shamokin Area SD

Printed 11/25/2020 9:19:50 AM

1110 Regular Programs	<u>Nonspecial Education</u>	<u>Special Education</u>
300 <u>Purchased Professional and Technical Services</u>		
322 Professional Educational Services - Ius	25,772.00	12,272.00
Total Purchased Professional and Technical Services	\$25,772.00	\$12,272.00
Total 1110 Regular Programs	\$25,772.00	\$12,272.00