

LEA Name : Shamokin Area SD  
Address : 2000 W State St  
Coal Township , PA 17866

County : Northumberland  
AUN Number : 116496503  
LEA Type : SD

**Annual Financial Report  
Accuracy Certification Statement**

For Fiscal Year Ending

**6/30/2019**

Pennsylvania Department of Education

&

Office of Comptroller Operations

PDE-2056: Intermediate Unit

PDE-2057: School District, AVTS/CTC, Charter School,  
and Special Program Jointure

**CERTIFICATION: By signing this page I agree that the electronic data submitted is a complete and accurate statement of the financial operations and status of the local education agency for the fiscal year. It has been prepared in accordance with generally accepted accounting principles and established Commonwealth of PA reporting guidelines.**

  
Chief School Administrator Signature

Date

11-26-19

  
Board Secretary Signature

Date

11-26-19

karen colangelo

Contact Person

(570)648-5752

Ext :4123

Contact Person Telephone Number

kcolangelo@indians.k12.pa.us

Contact Person E-mail Address

(570)648-2592

Contact Person Fax Number

**(Pursuant to PA School Code Section 218(b))**

**County : Northumberland**

12/31/2019

Date \_\_\_\_\_

**Auditing Firm:**

CERTIFICATION: By signing this page I agree that the financial statements of the school have been properly audited as noted above pursuant to Article XXIV, and in the auditor's professional opinion, the Annual Financial Report (PDE-2057) submitted on the date referenced is materially consistent with the audited financial statements.

**Chief School Administrator**

**Board Secretary**

Signature \_\_\_\_\_ Date \_\_\_\_\_

karen colangelo

**Contact Person**

kcolangelo@indians.k12.pa.us

Contact Person E-mail Address

Signature \_\_\_\_\_ Date \_\_\_\_\_

(570)648-5752      Ext :4123

Contact Person Telephone Number

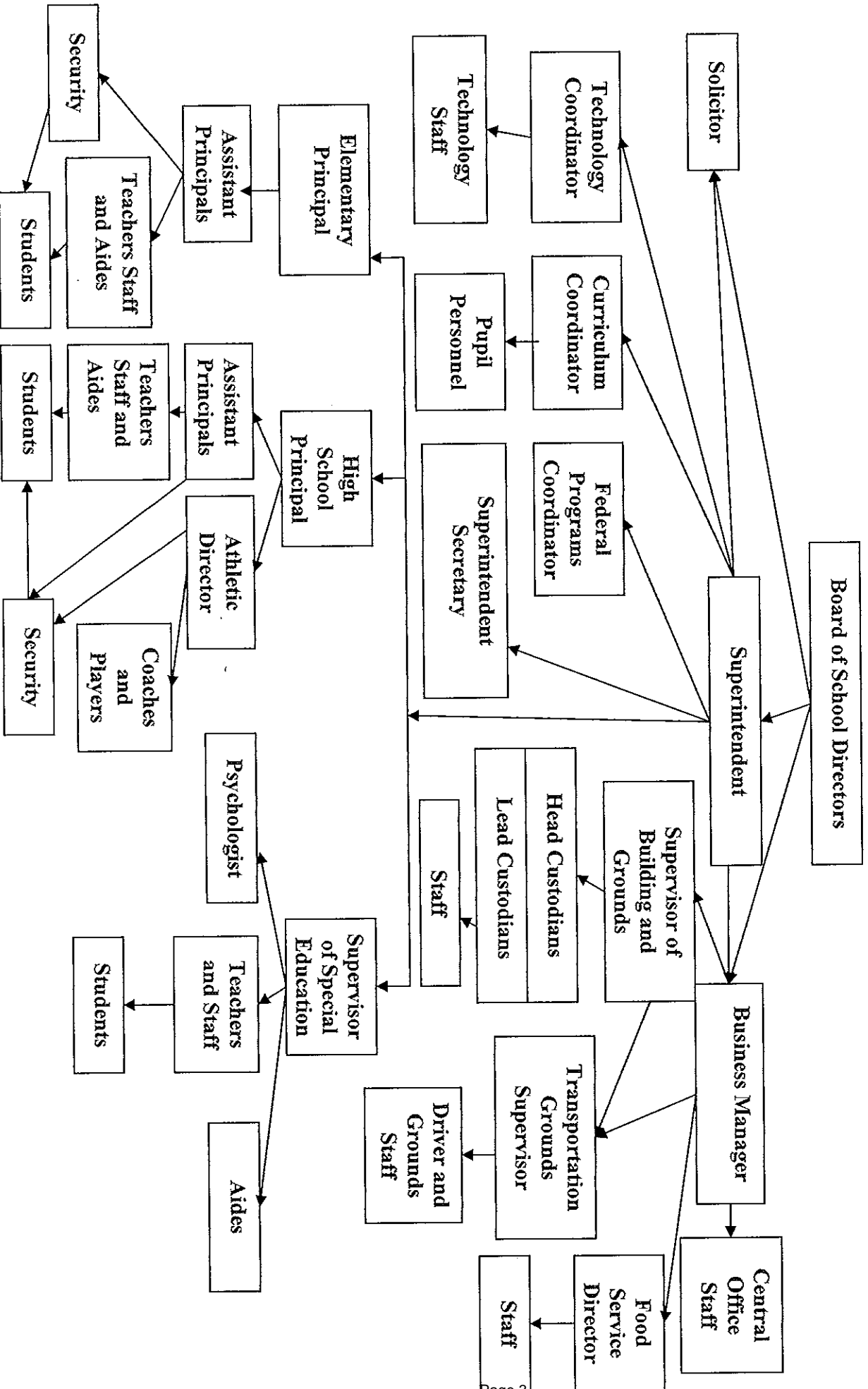
(570)648-2592

Contact Person Fax Number

# SHAMOKIN AREA SCHOOL DISTRICT ORGANIZATIONAL CHART

No. 008

SECTION: Local Board Procedures  
TITLE: Organization Chart  
ADOPTED:  
REVISED:



<u>Val Number</u>	<u>Description</u>	<u>Justification</u>
13092	REG: A large amount has been reported as local revenue in Fund 32, account 6000 which should only include interest earnings of this fund. Correct or provide a brief explanation of the revenue reported.  REG, Fund 32, Local Revenue Line 6000: \$68,696.00	interest earnings: \$26,760.05 and other earnings on investment: \$41,935.73
50450	SESS - 2350 Legal and Accounting Services: SESS Schedule amounts for Special Education vary from prior year by 40% or more. Correct the data or enter a justification.  SESS Schedule 2350: \$8,893.25 Prior Year SESS Schedule 2350: \$15,767.96	In prior year, we were involved in negotiations of contract agreements between our instructional and non-instructional staff. For 2018-19, less time was required to address the legal matters of the district.

LEA : 116496503      Shamokin Area SD

Printed 11/26/2019 7:08:42 PM

Amounts Expressed in Whole Dollars		<u>General Fund</u> <u>(10)</u>	<u>Public Purpose Trust</u> <u>(27)</u>	<u>Other Compt Approved</u> <u>(28)</u>	<u>Athletic / Activity</u> <u>(29)</u>	<u>Capital Reserve (690.</u> <u>1850)</u> <u>(31)</u>
<b>Assets And Deferred Outflows Of Resources</b>						
<b>Assets</b>						
0100	Cash and Cash Equivalents	4,423,412				
0110	Investments	190,647				
0120	Taxes Receivable	3,312,051				
0130	Due From Other Funds	163,025				
0141	Due From Other Governments	3,879,227				
0142	State Revenue Receivable	1,094,060				
0143	Federal Revenue Receivable	303,200				
0145	Other Intergovernmental Revenue Receivable					
0146	Due from Primary Government					
0147	Due from Component Unit					
0150	Other Receivables					
0170	Inventories					
0180	Prepaid Expenses (Expenditures)					
0190	Other Current Assets					
<b>Total Assets</b>		<b>\$13,365,622</b>				
0910	Deferred Outflows of Resources					
<b>Total Assets And Deferred Outflows Of Resources</b>		<b>\$13,365,622</b>				

LEA : 116496503      Shamokin Area SD

Printed 11/26/2019 7:08:42 PM

Amounts Expressed in Whole Dollars		<u>Capital Reserve (1431)</u> <u>(32)</u>	<u>Other Capital Projects</u> <u>Fund</u> <u>(39)</u>	<u>Debt Service</u> <u>(40)</u>	<u>Permanent</u> <u>(90)</u>	<u>Total Governmental</u> <u>Funds</u>
<b>Assets And Deferred Outflows Of Resources</b>						
<b>Assets</b>						
0100	Cash and Cash Equivalents	965,877				5,389,289
0110	Investments					190,647
0120	Taxes Receivable					3,312,051
0130	Due From Other Funds	7,955				170,980
0141	Due From Other Governments					3,879,227
0142	State Revenue Receivable					1,094,060
0143	Federal Revenue Receivable					303,200
0145	Other Intergovernmental Revenue Receivable					
0146	Due from Primary Government					
0147	Due from Component Unit					
0150	Other Receivables					
0170	Inventories					
0180	Prepaid Expenses (Expenditures)					
0190	Other Current Assets					
<b>Total Assets</b>		<b>\$973,832</b>				<b>\$14,339,454</b>
0910	Deferred Outflows of Resources					
<b>Total Assets And Deferred Outflows Of Resources</b>		<b>\$973,832</b>				<b>\$14,339,454</b>

LEA : 116496503      Shamokin Area SD

Printed 11/26/2019 7:08:42 PM

Amounts Expressed in Whole Dollars	<u>General Fund</u> <u>(10)</u>	<u>Public Purpose Trust</u> <u>(27)</u>	<u>Other Compt Approved</u> <u>(28)</u>	<u>Athletic / Activity</u> <u>(29)</u>	<u>Capital Reserve (690.</u> <u>1850)</u> <u>(31)</u>
<b>Liabilities And Deferred Inflows Of Resources And Fund Balances</b>					
<b>Liabilities</b>					
0400 Due to Other Funds	7,955				
0411 Due to Other Governments					
0412 Due to Primary Government					
0413 Due to Component Unit					
0420 Accounts Payable	2,976,507				
0430 Contracts Payable					
0440 Current Portion of Long-Term Debt					
0450 Short-Term Payables					
0461 Accrued Salaries and Benefits	1,602,926				
0462 Payroll Deductions and Withholding	1,068,140				
0480 Unearned Revenues	13,804				
0490 Other Current Liabilities	150				
<b>Total Liabilities</b>	<b>\$5,669,482</b>				
0950 Deferred Inflows of Resources	3,298,804				
<b>Fund Balances</b>					
0810 Nonspendable Fund Balance					
0820 Restricted Fund Balance					
0830 Committed Fund Balance					
0840 Assigned Fund Balance	2,000,000				
0850 Unassigned Fund Balance	2,397,336				
<b>Total Fund Balances</b>	<b>\$4,397,336</b>				
<b>Total Liabilities, Deferred Inflows Of Resources And Fund Balances</b>	<b>\$13,365,622</b>				

LEA : 116496503      Shamokin Area SD

Printed 11/26/2019 7:08:42 PM

Amounts Expressed in Whole Dollars		<u>Capital Reserve (1431)</u> <u>(32)</u>	<u>Other Capital Projects</u> <u>Fund</u> <u>(39)</u>	<u>Debt Service</u> <u>(40)</u>	<u>Permanent</u> <u>(90)</u>	<u>Total Governmental</u> <u>Funds</u>
<b>Liabilities And Deferred Inflows Of Resources And Fund Balances</b>						
<b>Liabilities</b>						
0400	Due to Other Funds					7,955
0411	Due to Other Governments					
0412	Due to Primary Government					
0413	Due to Component Unit					
0420	Accounts Payable	3,610				2,980,117
0430	Contracts Payable					
0440	Current Portion of Long-Term Debt					
0450	Short-Term Payables					
0461	Accrued Salaries and Benefits					1,602,926
0462	Payroll Deductions and Withholding					1,068,140
0480	Unearned Revenues					13,804
0490	Other Current Liabilities					150
<b>Total Liabilities</b>		<b>\$3,610</b>				<b>\$5,673,092</b>
0950	Deferred Inflows of Resources					3,298,804
<b>Fund Balances</b>						
0810	Nonspendable Fund Balance					
0820	Restricted Fund Balance	970,222				970,222
0830	Committed Fund Balance					
0840	Assigned Fund Balance					2,000,000
0850	Unassigned Fund Balance					2,397,336
<b>Total Fund Balances</b>		<b>\$970,222</b>				<b>\$5,367,558</b>
<b>Total Liabilities, Deferred Inflows Of Resources And Fund Balances</b>		<b>\$973,832</b>				<b>\$14,339,454</b>



LEA : 116496503     Shamokin Area SD

Printed 11/26/2019 7:08:49 PM

Amounts Expressed in Whole Dollars	<u>General Fund</u> <u>(10)</u>	<u>Public Purpose Trust</u> <u>(27)</u>	<u>Other Compt Approved</u> <u>(28)</u>	<u>Athletic / Activity</u> <u>(29)</u>	<u>Capital Reserve (690.</u> <u>1850)</u> <u>(31)</u>
<b>Revenues</b>					
6000 Revenue from Local Sources	6,931,996				
7000 Revenue from State Sources	20,233,965				
8000 Revenue from Federal Sources	1,323,409				
<b>Total Revenues</b>	<b>\$28,489,370</b>				
<b>Expenditures</b>					
1000 Instruction	20,822,630				
2000 Support Services	9,113,835				
3000 Operation of Non-Instructional Services	674,178				
4000 Facilities Acquisition, Construction and Improvement Services					
5110 Debt Service					
5130 Refund of Prior Year Revenues / Receipts	65				
<b>Total Expenditures</b>	<b>\$30,610,708</b>				
<b>Excess (Deficiency) Of Revenues Over Expenditures</b>	<b>(\$2,121,338)</b>				
<b>Other Financing Sources (Uses)</b>					
9110 Face Value of Bonds Issued					
9120 Proceeds from Refunding of Bonds					
9130 Bond Premiums					
9200 Proceeds from Extended-Term Financing					
9300 Interfund Transfers - IN					
9400 Sale of or Compensation for Loss of Fixed Assets	2,750				
9710 Transfers from Component Units					
9720 Transfers from Primary Governments					
9910 Other Financing Sources Not Listed in the 9000 Series					
9990 Insurance Recoveries	30,574				
5120 Debt Service – Refunded Bonds					
5150 Bond Discounts					
5200 Interfund Transfers – Out	172,432				
5300 Transfers Out to Component Units/Primary Governments					
<b>Total Other Financing Sources (Uses)</b>	<b>(\$139,108)</b>				

LEA : 116496503      Shamokin Area SD

Printed 11/26/2019 7:08:49 PM

Amounts Expressed in Whole Dollars	Capital Reserve (1431) (32)	Other Capital Projects Fund (39)	Debt Service (40)	Permanent (90)	Total Governmental Funds
<b>Revenues</b>					
6000 Revenue from Local Sources	68,696				7,000,692
7000 Revenue from State Sources					20,233,965
8000 Revenue from Federal Sources					1,323,409
<b>Total Revenues</b>	<b>\$68,696</b>				<b>\$28,558,066</b>
<b>Expenditures</b>					
1000 Instruction					20,822,630
2000 Support Services	108,416				9,222,251
3000 Operation of Non-Instructional Services					674,178
4000 Facilities Acquisition, Construction and Improvement Services					
5110 Debt Service	736,140				736,140
5130 Refund of Prior Year Revenues / Receipts					65
<b>Total Expenditures</b>	<b>\$844,556</b>				<b>\$31,455,264</b>
<b>Excess (Deficiency) Of Revenues Over Expenditures</b>	<b>(\$775,860)</b>				<b>(\$2,897,198)</b>
<b>Other Financing Sources (Uses)</b>					
9110 Face Value of Bonds Issued					
9120 Proceeds from Refunding of Bonds					
9130 Bond Premiums					
9200 Proceeds from Extended-Term Financing					
9300 Interfund Transfers - IN	105,316				105,316
9400 Sale of or Compensation for Loss of Fixed Assets					2,750
9710 Transfers from Component Units					
9720 Transfers from Primary Governments					
9910 Other Financing Sources Not Listed in the 9000 Series					
9990 Insurance Recoveries					30,574
5120 Debt Service – Refunded Bonds					
5150 Bond Discounts					
5200 Interfund Transfers – Out					172,432
5300 Transfers Out to Component Units/Primary Governments					
<b>Total Other Financing Sources (Uses)</b>	<b>\$105,316</b>				<b>(\$33,792)</b>

Amounts Expressed in Whole Dollars		<u>General Fund</u> <u>(10)</u>	<u>Public Purpose Trust</u> <u>(27)</u>	<u>Other Compt Approved</u> <u>(28)</u>	<u>Athletic / Activity</u> <u>(29)</u>	<u>Capital Reserve</u> <u>(690.</u> <u>1850)</u> <u>(31)</u>
<b>Special And Extraordinary Items</b>						
9920	Special Items – Gains					
9930	Extraordinary Items – Gains					
5520	Special Items – Losses					
5530	Extraordinary Items – Losses					
<b>Net Change In Fund Balances</b>		<b>(\$2,260,446)</b>				
<b>Fund Balance</b>						
0001	Fund Balance - Beginning of Fiscal Year	6,657,782				
<b>Fund Balance - End Of Year</b>		<b>\$4,397,336</b>				

Amounts Expressed in Whole Dollars		<u>Capital Reserve (1431</u> <u>(32)</u>	<u>Other Capital Projects</u> <u>Fund</u> <u>(39)</u>	<u>Debt Service</u> <u>(40)</u>	<u>Permanent</u> <u>(90)</u>	<u>Total Governmental</u> <u>Funds</u>
<b>Special And Extraordinary Items</b>						
9920	Special Items – Gains					
9930	Extraordinary Items – Gains					
5520	Special Items – Losses					
5530	Extraordinary Items – Losses					
<b>Net Change In Fund Balances</b>		<b>(\$670,544)</b>				<b>(\$2,930,990)</b>
<b>Fund Balance</b>						
0001	Fund Balance - Beginning of Fiscal Year	1,640,766	1			8,298,549
<b>Fund Balance - End Of Year</b>		<b>\$970,222</b>	<b>\$1</b>			<b>\$5,367,559</b>

LEA : 116496503      Shamokin Area SD

Printed 11/26/2019 7:08:52 PM

Amounts Expressed in Whole Dollars	Food Service (51)	Child Care Operations (52)	Other Enterprise (58)	TOTAL	Internal Service (60)
<b>Assets And Deferred Outflows Of Resources</b>					
<b>Current Assets</b>					
0100 Cash and Cash Equivalents	1,748,863			1,748,863	
0110 Investments					
0130 Due From Other Funds					
0141 Due From Other Governments					
0142 State Revenue Receivable	2,204			2,204	
0143 Federal Revenue Receivable	53,441			53,441	
0146 Due from Primary Government					
0147 Due from Component Unit					
0150 Other Receivables					
0170 Inventories	32,587			32,587	
0180 Prepaid Expenses (Expenditures)					
0190 Other Current Assets					
<b>Total Current Assets</b>	<b>\$1,837,095</b>			<b>\$1,837,095</b>	
<b>Noncurrent Assets</b>					
0211 Land					
0212 Site Improvements (Net)					
0220 Buildings and Building Improvements (Net)					
0230 Machinery, Equipment and Furniture (Net)	36,727			36,727	
0250 Construction in Progress					
0260 Long Term Prepayments					
0290 Other Noncurrent Assets					
<b>Total Noncurrent Assets</b>	<b>\$36,727</b>			<b>\$36,727</b>	
0910 Deferred Outflows of Resources					
<b>Total Assets And Deferred Outflows Of Resources</b>	<b>\$1,873,822</b>			<b>\$1,873,822</b>	

LEA : 116496503      Shamokin Area SD

Printed 11/26/2019 7:08:52 PM

Amounts Expressed in Whole Dollars	<u>Food Service</u> <u>(51)</u>	<u>Child Care</u> <u>Operations</u> <u>(52)</u>	<u>Other Enterprise</u> <u>(58)</u>	<u>TOTAL</u>	<u>Internal Service</u> <u>(60)</u>
<b>Liabilities And Deferred Inflows Of Resources And Net Position</b>					
<b>Current Liabilities</b>					
0400 Due to Other Funds	163,025			163,025	
0411 Due to Other Governments					
0413 Due to Component Unit					
0420 Accounts Payable					
0430 Contracts Payable					
0440 Current Portion of Long-Term Debt					
0450 Short-Term Payables					
0461 Accrued Salaries and Benefits					
0462 Payroll Deductions and Withholding					
0480 Unearned Revenues	18,048			18,048	
0490 Other Current Liabilities	6,544			6,544	
<b>Total Current Liabilities</b>	<b>\$187,617</b>			<b>\$187,617</b>	
<b>Noncurrent Liabilities</b>					
0510 Bonds Payable					
0520 Extended-Term Financing Agreements Payable					
0530 Lease-Purchase Obligations					
0540 Accumulated Compensated Absences					
0550 Authority Lease Obligations					
0560 Other Post-Employment Benefits (OPEB)					
0570 Net Pension Liability					
0599 Other Noncurrent Liabilities					
<b>Total Noncurrent Liabilities</b>					
<b>Total Liabilities</b>	<b>\$187,617</b>			<b>\$187,617</b>	
0950 Deferred Inflows of Resources					
<b>Net Position</b>					
0791 Net Investment in Capital Assets	57,865			57,865	
0008 Restricted Net Position (0792 – 0798)					
0799 Unrestricted Net Position	1,628,340			1,628,340	
<b>Total Net Position</b>	<b>\$1,686,205</b>			<b>\$1,686,205</b>	
<b>Total Liabilities And Deferred Inflows Of Resources And Net Position</b>	<b>\$1,873,822</b>			<b>\$1,873,822</b>	

Amounts Expressed in Whole Dollars	<u>Food Service</u> <u>(51)</u>	<u>Child Care Operations</u> <u>(52)</u>	<u>Other Enterprise</u> <u>(58)</u>	<u>TOTAL</u>	<u>Internal Service</u> <u>(60)</u>
<b>Operating Revenues</b>					
6600 Food Service Revenue	155,577			155,577	
0071 Charges for Services					
0072 Other Operating Revenue					
<b>Total Operating Revenues</b>	<b>\$155,577</b>			<b>\$155,577</b>	
<b>Operating Expenses</b>					
100 Personnel Services – Salaries	73,369			73,369	
200 Personnel Services – Employee Benefits	64,585			64,585	
300 Purchased Professional and Technical Services					
400 Purchased Property Services	14,509			14,509	
500 Other Purchased Services	584,122			584,122	
600 Supplies	752,722			752,722	
740 Depreciation	26,208			26,208	
810 Dues and Fees					
890 Miscellaneous Expenditures					
<b>Total Operating Expenses</b>	<b>\$1,515,515</b>			<b>\$1,515,515</b>	
<b>Operating Income (Loss)</b>	<b>(\$1,359,938)</b>			<b>(\$1,359,938)</b>	
<b>Non Operating Revenues (Expenses)</b>					
6500 Earnings on Investments	37,004			37,004	
6920 Contributions and Donations from Private Sources					
6930 Gains or Losses on Sale of Fixed Assets					
6991 Refunds of a Prior Year Expenditure					
7000 Revenue from State Sources	48,385			48,385	
8000 Revenue from Federal Sources	1,246,435			1,246,435	
9990 Insurance Recoveries					
820 Claims and Judgments Against the LEA					
830 Interest					
<b>TOTAL Non Operating Revenues (Expenses)</b>	<b>\$1,331,824</b>			<b>\$1,331,824</b>	
<b>Income (Loss) Before Contributions And Transfers</b>	<b>(\$28,114)</b>			<b>(\$28,114)</b>	

Amounts Expressed in Whole Dollars	<u>Food Service</u> <u>(51)</u>	<u>Child Care Operations</u> <u>(52)</u>	<u>Other Enterprise</u> <u>(58)</u>	<u>TOTAL</u>	<u>Internal Service</u> <u>(60)</u>
<b>Contributions, Transfers, and Special and Extraordinary Items</b>					
5200 Interfund Transfers – Out					
5300 Transfers Out to Component Units/Primary Governments					
5520 Special Items – Losses					
5530 Extraordinary Items – Losses					
9300 Interfund Transfers - IN	67,116			67,116	
9500 Capital Contributions					
9700 Transfers IN From Component Units/Primary Governments					
9920 Special Items – Gains					
9930 Extraordinary Items – Gains					
<b>Change In Net Position</b>	<b>\$39,002</b>			<b>\$39,002</b>	
0002 Net Position - Beginning of Fiscal Year	1,647,203			1,647,203	
0003 Accounting Changes / Residual Equity Transfers					
<b>Net Position - End Of Year</b>	<b>\$1,686,205</b>			<b>\$1,686,205</b>	



LEA : 116496503      Shamokin Area SD

Printed 11/26/2019 7:09:04 PM

Amounts Expressed in Whole Dollars	<u>Food Service</u> <u>(51)</u>	<u>Child Care Operations</u> <u>(52)</u>	<u>Other Enterprise</u> <u>(58)</u>	<u>TOTAL</u>	<u>Internal Service(60)</u>
<b>Cash Flows From Operating Activities</b>					
0011 Cash Receipts From Users	163,466			163,466	
0012 Cash Receipts From Assessments Made to Other Funds					
0013 Cash Receipts From Earnings on Investments					
0014 Cash Receipts From Other Operating Revenue					
0015 Cash Payments To Employees For Services	137,954			137,954	
0016 Cash Payments For Insurance Claims					
0017 Cash Payments To Suppliers For Goods and Services	1,373,367			1,373,367	
0018 Cash Payments For Other Operating Expenses					
<b>Net Cash Provided By (Used For) Operating Activities</b>	<b>(\$1,347,855)</b>			<b>(\$1,347,855)</b>	
<b>Cash Flows From Non-Capital Financing Activities</b>					
0021 Receipts From Local Sources - 6000					
0022 Receipts From State Sources - 7000	54,262			54,262	
0023 Receipts From Federal Sources -8000	1,266,853			1,266,853	
0024 Notes and Loans Received (Repaid)					
0025 Interest Paid on Notes/Loans - 5100-830					
0026 Operating Transfers In (Out)/Residual Equity Trans					
0027 Operating Transfers In (Out) Primary Government / Comp Unit	67,116			67,116	
0028 Receipts From Refund of Prior Year Expenditures - 6991					
0029 Special and Extraordinary Gains (losses)					
0030 Receipts from Insurance Recoveries -9990					
<b>Net Cash Prov By (Used for) Non-Capital Financing Activities</b>	<b>\$1,388,231</b>			<b>\$1,388,231</b>	
<b>Cash Flows From Capital and Related Financing Activities</b>					
0031 Payments For Fac Acq, Const, and Imp - 4000	(4,000)			(4,000)	
0032 Gain / (Loss) on Sale of Fixed Assets - 6930					
0033 Proceeds From Extended Term Financing - 9200					
0034 Principal Paid on Financing Agreements					
0035 Interest Paid on Financing Agreements - 5100-830					
0036 (Inc) Dec in Contributed Capital					
<b>Net Cash Prov By (Used for) Capital and Related Financing Activities</b>	<b>(\$4,000)</b>			<b>(\$4,000)</b>	
<b>Cash Flows From Investing Activities</b>					
0041 Earnings on Investments - 6500	37,004			37,004	
0042 Purchase of Inv Securities / Deposits to Inv Pools					
0043 Receipts From Investment Pool Withdrawals					
0044 Proceeds from Sale and Maturity of Inv Securities					

LEA : 116496503      Shamokin Area SD

Printed 11/26/2019 7:09:04 PM

0045   Loans Received (Paid)

Net Cash Prov By (Used for) Investing Activities	\$37,004	\$37,004
--	----------	----------

LEA : 116496503      Shamokin Area SD

Printed 11/26/2019 7:09:04 PM

	Food Service (51)	Child Care Operations (52)	Other Enterprise (58)	TOTAL	Internal Service (60)
Net Increase (Decrease) in Cash Flows	73,380			73,380	
0004 Cash and Cash Equivalents Beginning of Year	1,675,483			1,675,483	
Cash and Cash Equivalents at Year End	\$1,748,863			\$1,748,863	
Reconciliation of Operating Income (Loss) To Net Cash Provided by (Used For) Operating Activities					
0005 Operating Income (Loss) per REP	(1,359,938)			(1,359,938)	
Adjustments					
0051 Depreciation and Net Amortization	25,138			25,138	
0052 Provision for Uncollectible Accounts					
0053 Other Adjustments	92,071			92,071	
Effect of Changes in Assets, Liabilities, Deferred Outflows and Deferred Inflows					
0054 (Inc) Dec In Accounts Receivable (0120-0150)	(113,980)			(113,980)	
0055 Advances to Other Funds (0160)	13,110			13,110	
0056 (Inc) Dec in Inventories (0170)	(3,526)			(3,526)	
0057 (Inc) Dec in Prepaid Expenses (0180)					
0058 (Inc) Dec in Other Current or Noncurrent Assets					
0064 Deferred Outflows (0910)					
0059 Inc (Dec) in Accounts Payable (0400-0450)	(729)			(729)	
0060 Inc (Dec) in Accrued Salaries/Benefits (0461)					
0065 Inc (Dec) in Net Pension Liabilities (0570)					
0066 Inc (Dec) in Other Postemp Benefit Oblig (0560)					
0061 Inc (Dec) in Payroll Deductions/Withholding (0462)					
0062 Inc (Dec) in Unearned Revenue (0480)					
0063 Inc (Dec) in Other Current or Noncurrent Liabilities					
0067 Deferred Inflows (0950)					
Total Adjustments	\$12,084			\$12,084	
Cash Provided By (Used for) Total	(\$1,347,854)			(\$1,347,854)	

COMBINED STATEMENT OF CASH FLOWS  
SCHEDULE OF NONCASH INVESTING, CAPITAL, AND FINANCING ACTIVITIES

Explanation of Transaction and Balance Sheet Effect	Amount
Total	

LEA : 116496503      Shamokin Area SD

Printed 11/26/2019 7:09:06 PM

Amounts Expressed in Whole Dollars	<u>Private Purpose Trust</u> <u>(71)</u>	<u>Investment Trust</u> <u>(72)</u>	<u>Pension Trust</u> <u>(73)</u>	<u>Activity</u> <u>(81)</u>
<b>Assets And Deferred Outflows Of Resources</b>				
<b>Assets</b>				
0100 Cash and Cash Equivalents	59,518			177,667
0110 Investments			505,286	
0130 Due From Other Funds				
0147 Due from Component Unit				
0150 Other Receivables				
0170 Inventories				
0180 Prepaid Expenses (Expenditures)				
0190 Other Current Assets				
0220 Buildings and Building Improvements (Net)				
0230 Machinery, Equipment and Furniture (Net)				
<b>Total Assets</b>	<b>\$59,518</b>		<b>\$505,286</b>	<b>\$177,667</b>
0910 Deferred Outflows of Resources				
<b>Total Assets And Deferred Outflows Of Resources</b>	<b>\$59,518</b>		<b>\$505,286</b>	<b>\$177,667</b>

LEA : 116496503      Shamokin Area SD

Printed 11/26/2019 7:09:06 PM

Amounts Expressed in Whole Dollars		<u>Other Agency</u> <u>(89)</u>	<u>Discrete Component Units</u> <u>(98)</u>	<u>Discrete Component Units</u> <u>(99)</u>	<u>Total Fiduciary Funds</u>
<b>Assets And Deferred Outflows Of Resources</b>					
<b>Assets</b>					
0100	Cash and Cash Equivalents				237,185
0110	Investments				505,286
0130	Due From Other Funds				
0147	Due from Component Unit				
0150	Other Receivables				
0170	Inventories				
0180	Prepaid Expenses (Expenditures)				
0190	Other Current Assets				
0220	Buildings and Building Improvements (Net)				
0230	Machinery, Equipment and Furniture (Net)				
<b>Total Assets</b>					<b>\$742,471</b>
0910	Deferred Outflows of Resources				
<b>Total Assets And Deferred Outflows Of Resources</b>					<b>\$742,471</b>

LEA : 116496503      Shamokin Area SD

Printed 11/26/2019 7:09:06 PM

Amounts Expressed in Whole Dollars	<u>Private Purpose Trust</u> <u>(71)</u>	<u>Investment Trust</u> <u>(72)</u>	<u>Pension Trust</u> <u>(73)</u>	<u>Activity</u> <u>(81)</u>
<b>Liabilities, Deferred Inflows Of Resources And Net Position</b>				
<b>Liabilities</b>				
0400 Due to Other Funds				
0411 Due to Other Governments				
0412 Due to Primary Government				
0413 Due to Component Unit				
0420 Accounts Payable				
0430 Contracts Payable				
0450 Short-Term Payables				
0461 Accrued Salaries and Benefits				
0462 Payroll Deductions and Withholding				
0480 Unearned Revenues				
0490 Other Current Liabilities				177,667
<b>Total Liabilities</b>				<b>\$177,667</b>
0950 Deferred Inflows of Resources				
<b>Net Position</b>				
0791 Net Investment in Capital Assets				
0009 Restricted Net Position (0792 – 0798)			505,286	
0799 Unrestricted Net Position	59,518			
<b>Total Net Position</b>	<b>\$59,518</b>		<b>\$505,286</b>	
<b>Total Liabilities, Deferred Inflows Of Resources And Net Position</b>	<b>\$59,518</b>		<b>\$505,286</b>	<b>\$177,667</b>

LEA : 116496503     Shamokin Area SD

Printed 11/26/2019 7:09:06 PM

Amounts Expressed in Whole Dollars

<u>Other Agency</u> <u>(89)</u>	<u>Discrete Component Units</u> <u>(98)</u>	<u>Discrete Component Units</u> <u>(99)</u>	<u>Total Fiduciary Funds</u>
------------------------------------	--	--	------------------------------

Liabilities, Deferred Inflows Of Resources And Net Position

Liabilities

0400	Due to Other Funds			
0411	Due to Other Governments			
0412	Due to Primary Government			
0413	Due to Component Unit			
0420	Accounts Payable			
0430	Contracts Payable			
0450	Short-Term Payables			
0461	Accrued Salaries and Benefits			
0462	Payroll Deductions and Withholding			
0480	Unearned Revenues			
0490	Other Current Liabilities			177,667

<b>Total Liabilities</b>				<b>\$177,667</b>
--------------------------	--	--	--	------------------

0950 Deferred Inflows of Resources

Net Position

0791	Net Investment in Capital Assets			
0009	Restricted Net Position (0792 – 0798)			505,286
0799	Unrestricted Net Position			59,518

<b>Total Net Position</b>				<b>\$564,804</b>
---------------------------	--	--	--	------------------

<b>Total Liabilities, Deferred Inflows Of Resources And Net Position</b>				<b>\$742,471</b>
--	--	--	--	------------------



LEA : 116496503      Shamokin Area SD

Printed 11/26/2019 7:09:08 PM

Amounts Expressed in Whole Dollars	<u>Private Purpose Trust</u> <u>(71)</u>	<u>Investment Trust</u> <u>(72)</u>	<u>Pension Trust</u> <u>(73)</u>	<u>Discrete Component</u> <u>Units</u> <u>(98)</u>	<u>Discrete Component</u> <u>Units</u> <u>(99)</u>	<u>Total Fiduciary</u> <u>Funds</u>
<b>Additions</b>						
0091 Gifts and Contributions	1,183					1,183
0092 Other Additions	6		35,944			35,950
<b>Deductions</b>						
0093 Scholarships Awarded	4,850					4,850
0094 Other Deductions			4,219			4,219
<b>Change In Net Position</b>	<b>(\$3,661)</b>		<b>\$31,725</b>			<b>\$28,064</b>
0006 Net Position – Beginning of Fiscal Year	63,179		473,561			536,740
0007 Net Position Held in Trust for Pension Benefits						
<b>Net Position - End of Fiscal Year</b>	<b>\$59,518</b>		<b>\$505,286</b>			<b>\$564,804</b>

LEA : 116496503      Shamokin Area SD

General Fund (10)

Printed 11/26/2019 7:09:10 PM

Page - 1 of 4

	Revenue Reported In Current Year	Current Year Tax Accrual	Prior Year Tax Accrual	Taxes Collected In Current Year
<b>Revenue from Local Sources</b>				
6111 Current Real Estate Taxes	2,938,842.73			2,938,842.73
6113 Public Utility Realty Taxes	5,713.77			5,713.77
6114 Payments in Lieu of Current Taxes - State / Local	31,235.42			31,235.42
6120 Current Per Capita Taxes, Section 679	34,394.20			34,394.20
6141 Current Act 511 Per Capita Taxes	34,394.20			34,394.20
6143 Current Act 511 Local Services Taxes	28,400.96			28,400.96
6151 Current Act 511 Earned Income Taxes	1,447,550.55			1,447,550.55
6152 Current Act 511 Occupation Taxes	437,879.00			437,879.00
6153 Current Act 511 Real Estate Transfer Taxes	109,829.63			109,829.63
6155 Current Act 511 Business Privilege Taxes	201,244.84			201,244.84
6411 Delinquent Real Estate Taxes	334,335.31			334,335.31
6420 Delinquent Per Capita Taxes, Section 679	19,561.72			19,561.72
6451 Delinquent Act 511 Earned Income Taxes	12,797.96			12,797.96
6459 Delinquent Act 511 Taxes, Other Proportional Assessments	188,637.89			188,637.89
6500 Earnings on Investments	130,104.50			
6700 Revenues from LEA Activities	84,569.21			
6831 Federal Revenue Received from Other Pennsylvania Public LEAs	33,435.31			
6832 Federal IDEA Revenue Received as Pass Through	499,468.77			
6910 Rentals	4,850.00			
6920 Contributions and Donations from Private Sources	5,500.00			
6942 Summer School Tuition	5,480.00			
6949 Other Tuition from Patrons	120,471.97			
6991 Refunds of a Prior Year Expenditure	216,085.13			
6999 Other Revenues Not Specified Above	7,212.45			
<b>TOTAL Revenue from Local Sources</b>	<b>\$6,931,995.52</b>			<b>\$5,824,818.18</b>

	Revenue Reported In Current Year			
<b><u>Revenue from State Sources</u></b>				
7110 Basic Education Funding	12,628,027.91			
7160 Tuition for Orphans Subsidy	29,238.51			
7271 Special Education funds for School-Aged Pupils	1,718,175.98			
7292 Pre-K Counts	340,000.00			
7299 Program Revenues Not Listed Previously in the 7200 Series	3,139.58			
7311 Pupil Transportation Subsidy	786,203.64			
7312 Nonpublic and Charter School Pupil Transportation Subsidy	104,720.00			
7330 Health Services (Medical, Dental, Nurse, Act 25)	89,264.78			
7340 State Property Tax Reduction Allocation	351,447.48			
7361 School Safety and Security Grants	25,000.00			
7505 Ready to Learn Block Grant	514,641.00			
7598 Revenue for the Support of Public Schools	3,900.00			
7810 State Share of Social Security and Medicare Taxes	620,084.80			
7820 State Share of Retirement Contributions	3,020,121.31			
<b>TOTAL Revenue from State Sources</b>	<b>\$20,233,964.99</b>			

	Revenue Reported In Current Year			
<b><u>Revenue from Federal Sources</u></b>				
8514 NCLB, Title I - Improving the Academic Achievement of the Disadvantaged	876,415.79			
8515 NCLB, Title II - Preparing, Training and Recruiting High Quality Teachers and Principals	74,029.82			
8517 NCLB, Title IV - 21St Century Schools	59,371.00			
8519 NCLB, Title VI - Flexibility and Accountability	41,412.00			
8733 ARRA - Qualified Zone Academy Bonds (QZAB)	195,636.95			
8810 School-Based Access Medicaid Reimbursement Program (SBAP) Reimbursements (Access)	55,144.00			
8820 Medical Assistance Reimbursement for Administrative Claiming (Quarterly) Program	21,399.33			
<b>TOTAL Revenue from Federal Sources</b>	<b>\$1,323,408.89</b>			

Revenue Reported In Current Year				
<b><u>Other Financing Sources</u></b>				
9400	Sale of or Compensation for Loss of Fixed Assets	2,750.00		
9990	Insurance Recoveries	30,574.16		
<b>TOTAL Other Financing Sources</b>		<b>\$33,324.16</b>		
<b>TOTAL FROM ALL SOURCES</b>		<b>\$28,522,693.56</b>		<b>\$5,824,818.18</b>

Revenue from Local Sources	6,931,995.52
Revenue from State Sources	20,233,964.99
Revenue from Federal Sources	1,323,408.89
Other Financing Sources	33,324.16
<b>TOTAL FROM ALL SOURCES</b>	<b>\$28,522,693.56</b>

LEA : 116496503      Shamokin Area SD

Printed 11/26/2019 7:09:16 PM

General Fund (10)

1000 Instruction	Total
<b>100 <u>Personnel Services – Salaries</u></b>	
100 Personnel Services – Salaries	8,730,172.94
<b>Total Personnel Services – Salaries</b>	<b>\$8,730,172.94</b>
<b>200 <u>Personnel Services – Employee Benefits</u></b>	
210 Group Insurance – Contracted Provider	2,883,311.52
220 Social Security Contributions	651,201.73
230 PSERS Retirement Contributions	2,923,837.40
250 Unemployment Compensation	984.00
260 Workers' Compensation	78,597.21
270 Group Insurance – Self-Insurance	147,600.00
292 Health Savings Accounts	125,010.00
<b>Total Personnel Services – Employee Benefits</b>	<b>\$6,810,541.86</b>
<b>300 <u>Purchased Professional and Technical Services</u></b>	
322 Professional Educational Services – Ius	583,179.16
323 Professional Educational Services – Other Educational Agencies	255,166.00
329 Professional Educational Services – Other	2,400.00
330 Other Professional Services	184,408.75
340 Technical Services	595.00
360 Employee Training and Development Services	150.00
<b>Total Purchased Professional and Technical Services</b>	<b>\$1,025,898.91</b>
<b>400 <u>Purchased Property Services</u></b>	
410 Cleaning Services	2,553.00
430 Repairs and Maintenance Services	5,071.00
440 Rentals	7,466.41
490 Other Purchased Property Services	837.25
<b>Total Purchased Property Services</b>	<b>\$15,927.66</b>
<b>500 <u>Other Purchased Services</u></b>	
510 Student Transportation Services	18,387.40
530 Communications	514.37
550 Printing and Binding	2,185.67
561 Tuition To Other School Districts Within the State	177,194.80
562 Tuition To Pennsylvania Charter Schools	1,952,524.15
564 Tuition To Career and Technology Centers	905,043.00
567 Tuition To Approved Private Schools (APS) and PA Chartered Schools for the Deaf and Blind	21,915.78
568 Tuition To Private Residential Rehabilitative Institutions (PRRI) [In-State] and Detention Centers	372,132.83
569 Tuition – Other	228,330.00
580 Travel	1,489.02
594 IU Payment By Withholding for Institutionalized Children's Programs – Special Classes	2,116.91
<b>Total Other Purchased Services</b>	<b>\$3,681,833.93</b>
<b>600 <u>Supplies</u></b>	
610 General Supplies	249,124.49
630 Food	5,228.80
640 Books and Periodicals	168,497.56
650 Supplies & Fees – Technology Related	112,948.19

LEA : 116496503      Shamokin Area SD

Printed 11/26/2019 7:09:16 PM

General Fund (10)

1000 Instruction		<u>Total</u>
Total Supplies		\$535,799.04
700 <u>Property</u>		
752 Capital Equipment – Original and Additional		7,347.00
756 Capitalized Technology Equipment – Original		13,698.97
Total Property		\$21,045.97
800 <u>Other Objects</u>		
810 Dues and Fees		1,409.98
Total Other Objects		\$1,409.98
Total 1000 Instruction		\$20,822,630.29



LEA : 116496503      Shamokin Area SD

Printed 11/26/2019 7:09:16 PM

General Fund (10)

1100 Regular Programs – Elementary / Secondary

	Elementary	Secondary	Federal	Total
<b>100 Personnel Services – Salaries</b>				
100 Personnel Services – Salaries	2,803,190.95	2,848,563.90	566,905.50	6,218,660.35
<b>Total Personnel Services – Salaries</b>	<b>\$2,803,190.95</b>	<b>\$2,848,563.90</b>	<b>\$566,905.50</b>	<b>\$6,218,660.35</b>
<b>200 Personnel Services – Employee Benefits</b>				
210 Group Insurance – Contracted Provider	1,014,933.47	864,699.98	176,075.41	2,055,708.86
220 Social Security Contributions	208,382.57	212,711.23	42,553.07	463,646.87
230 PSERS Retirement Contributions	942,677.25	940,691.30	189,422.72	2,072,791.27
250 Unemployment Compensation		984.00		984.00
260 Workers' Compensation	25,249.52	25,640.96	5,102.15	55,992.63
270 Group Insurance – Self-Insurance	82,675.00	50,000.00		132,675.00
292 Health Savings Accounts		125,010.00		125,010.00
<b>Total Personnel Services – Employee Benefits</b>	<b>\$2,273,917.81</b>	<b>\$2,219,737.47</b>	<b>\$413,153.35</b>	<b>\$4,906,808.63</b>
<b>300 Purchased Professional and Technical Services</b>				
323 Professional Educational Services – Other Educational Agencies	53,973.00	176,483.50		230,456.50
329 Professional Educational Services – Other	1,272.00	1,128.00		2,400.00
340 Technical Services	422.45	172.55		595.00
<b>Total Purchased Professional and Technical Services</b>	<b>\$55,667.45</b>	<b>\$177,784.05</b>		<b>\$233,451.50</b>
<b>400 Purchased Property Services</b>				
410 Cleaning Services		995.00		995.00
430 Repairs and Maintenance Services	447.00	1,258.00		1,705.00
440 Rentals	5,428.30	455.64	4.82	5,888.76
<b>Total Purchased Property Services</b>	<b>\$5,875.30</b>	<b>\$2,708.64</b>	<b>\$4.82</b>	<b>\$8,588.76</b>
<b>500 Other Purchased Services</b>				
510 Student Transportation Services	3,164.13	7,046.57		10,210.70
530 Communications		41.81		41.81
550 Printing and Binding	2,185.67			2,185.67
561 Tuition To Other School Districts Within the State	11,969.81	37,214.23		49,184.04
562 Tuition To Pennsylvania Charter Schools		1,952,524.15		1,952,524.15
568 Tuition To Private Residential Rehabilitative Institutions (PRRI) [In-State] and Detention Centers	24,833.33	31,237.19		56,070.52
580 Travel		490.15	211.13	701.28
<b>Total Other Purchased Services</b>	<b>\$42,152.94</b>	<b>\$2,028,554.10</b>	<b>\$211.13</b>	<b>\$2,070,918.17</b>
<b>600 Supplies</b>				
610 General Supplies	60,965.69	81,659.62	3,962.99	146,588.30
640 Books and Periodicals	86,865.71	60,458.28	6,132.88	153,456.87
650 Supplies & Fees – Technology Related	18,078.64	40,639.86	43,770.34	102,488.84
<b>Total Supplies</b>	<b>\$165,910.04</b>	<b>\$182,757.76</b>	<b>\$53,866.21</b>	<b>\$402,534.01</b>
<b>800 Other Objects</b>				
810 Dues and Fees	53.00	77.00		130.00
<b>Total Other Objects</b>	<b>\$53.00</b>	<b>\$77.00</b>		<b>\$130.00</b>
<b>Total 1100 Regular Programs – Elementary / Secondary</b>	<b>\$5,346,767.49</b>	<b>\$7,460,182.92</b>	<b>\$1,034,141.01</b>	<b>\$13,841,091.42</b>

LEA : 116496503      Shamokin Area SD

Printed 11/26/2019 7:09:16 PM

General Fund (10)

1110 Regular Programs

	Elementary	Secondary	Federal	Total
<b>100 Personnel Services – Salaries</b>				
100 Personnel Services – Salaries	2,803,190.95	2,848,563.90	41,379.75	5,693,134.60
<b>Total Personnel Services – Salaries</b>	<b>\$2,803,190.95</b>	<b>\$2,848,563.90</b>	<b>\$41,379.75</b>	<b>\$5,693,134.60</b>
<b>200 Personnel Services – Employee Benefits</b>				
210 Group Insurance – Contracted Provider	1,014,933.47	864,699.98	9,317.25	1,888,950.70
220 Social Security Contributions	208,382.57	212,711.23	3,109.26	424,203.06
230 PSERS Retirement Contributions	942,677.25	940,691.30	13,833.17	1,897,201.72
250 Unemployment Compensation		984.00		984.00
260 Workers' Compensation	25,249.52	25,640.96	372.51	51,262.99
270 Group Insurance – Self-Insurance	82,675.00	50,000.00		132,675.00
292 Health Savings Accounts		125,010.00		125,010.00
<b>Total Personnel Services – Employee Benefits</b>	<b>\$2,273,917.81</b>	<b>\$2,219,737.47</b>	<b>\$26,632.19</b>	<b>\$4,520,287.47</b>
<b>300 Purchased Professional and Technical Services</b>				
323 Professional Educational Services – Other Educational Agencies	53,973.00	176,483.50		230,456.50
329 Professional Educational Services – Other	1,272.00	1,128.00		2,400.00
340 Technical Services	422.45	172.55		595.00
<b>Total Purchased Professional and Technical Services</b>	<b>\$55,667.45</b>	<b>\$177,784.05</b>		<b>\$233,451.50</b>
<b>400 Purchased Property Services</b>				
410 Cleaning Services		995.00		995.00
430 Repairs and Maintenance Services	447.00	1,258.00		1,705.00
440 Rentals	5,428.30	455.64		5,883.94
<b>Total Purchased Property Services</b>	<b>\$5,875.30</b>	<b>\$2,708.64</b>		<b>\$8,583.94</b>
<b>500 Other Purchased Services</b>				
510 Student Transportation Services	3,164.13	7,046.57		10,210.70
530 Communications		41.81		41.81
550 Printing and Binding	2,185.67			2,185.67
561 Tuition To Other School Districts Within the State	11,969.81	37,214.23		49,184.04
562 Tuition To Pennsylvania Charter Schools		1,952,524.15		1,952,524.15
568 Tuition To Private Residential Rehabilitative Institutions (PRRI) [In-State] and Detention Centers	24,833.33	31,237.19		56,070.52
580 Travel		490.15	211.13	701.28
<b>Total Other Purchased Services</b>	<b>\$42,152.94</b>	<b>\$2,028,554.10</b>	<b>\$211.13</b>	<b>\$2,070,918.17</b>
<b>600 Supplies</b>				
610 General Supplies	60,965.69	81,659.62		142,625.31
640 Books and Periodicals	86,865.71	60,458.28	57.93	147,381.92
650 Supplies & Fees – Technology Related	18,078.64	40,639.86	43,034.34	101,752.84
<b>Total Supplies</b>	<b>\$165,910.04</b>	<b>\$182,757.76</b>	<b>\$43,092.27</b>	<b>\$391,760.07</b>
<b>800 Other Objects</b>				
810 Dues and Fees	53.00	77.00		130.00
<b>Total Other Objects</b>	<b>\$53.00</b>	<b>\$77.00</b>		<b>\$130.00</b>
<b>Total 1110 Regular Programs</b>	<b>\$5,346,767.49</b>	<b>\$7,460,182.92</b>	<b>\$111,315.34</b>	<b>\$12,918,265.75</b>

LEA : 116496503      Shamokin Area SD

Printed 11/26/2019 7:09:16 PM

<b>General Fund (10)</b>				
<b>1190 Federally-Funded Regular Programs</b>	<b><u>Elementary</u></b>	<b><u>Secondary</u></b>	<b><u>Federal</u></b>	<b><u>Total</u></b>
<b>100 <u>Personnel Services – Salaries</u></b>				
100 Personnel Services – Salaries			525,525.75	525,525.75
<b>Total Personnel Services – Salaries</b>			<b>\$525,525.75</b>	<b>\$525,525.75</b>
<b>200 <u>Personnel Services – Employee Benefits</u></b>				
210 Group Insurance – Contracted Provider			166,758.16	166,758.16
220 Social Security Contributions			39,443.81	39,443.81
230 PSERS Retirement Contributions			175,589.55	175,589.55
260 Workers' Compensation			4,729.64	4,729.64
<b>Total Personnel Services – Employee Benefits</b>			<b>\$386,521.16</b>	<b>\$386,521.16</b>
<b>400 <u>Purchased Property Services</u></b>				
440 Rentals			4.82	4.82
<b>Total Purchased Property Services</b>			<b>\$4.82</b>	<b>\$4.82</b>
<b>600 <u>Supplies</u></b>				
610 General Supplies			3,962.99	3,962.99
640 Books and Periodicals			6,074.95	6,074.95
650 Supplies & Fees – Technology Related			736.00	736.00
<b>Total Supplies</b>			<b>\$10,773.94</b>	<b>\$10,773.94</b>
<b>Total 1190 Federally-Funded Regular Programs</b>			<b>\$922,825.67</b>	<b>\$922,825.67</b>

LEA : 116496503      Shamokin Area SD

Printed 11/26/2019 7:09:16 PM

General Fund (10)

1200 Special Programs – Elementary / Secondary	Elementary	Secondary	Federal	Total
<b>100 Personnel Services – Salaries</b>				
100 Personnel Services – Salaries	589,731.20	1,049,689.83	270,107.85	1,909,528.88
<b>Total Personnel Services – Salaries</b>	<b>\$589,731.20</b>	<b>\$1,049,689.83</b>	<b>\$270,107.85</b>	<b>\$1,909,528.88</b>
<b>200 Personnel Services – Employee Benefits</b>				
210 Group Insurance – Contracted Provider	215,038.51	330,796.85	103,896.92	649,732.28
220 Social Security Contributions	44,187.96	78,602.40	20,186.75	142,977.11
230 PSERS Retirement Contributions	197,066.87	352,030.07	90,296.96	639,393.90
250 Unemployment Compensation		5.20		5.20
260 Workers' Compensation	5,307.80	9,448.88	2,430.89	17,187.57
270 Group Insurance – Self-Insurance	6,000.00	8,925.00		14,925.00
<b>Total Personnel Services – Employee Benefits</b>	<b>\$467,601.14</b>	<b>\$779,808.40</b>	<b>\$216,811.52</b>	<b>\$1,464,221.06</b>
<b>300 Purchased Professional and Technical Services</b>				
322 Professional Educational Services – Ius	140,145.53	392,202.65		532,348.18
323 Professional Educational Services – Other Educational Agencies		14,034.00		14,034.00
330 Other Professional Services	183,808.75	600.00		184,408.75
<b>Total Purchased Professional and Technical Services</b>	<b>\$323,954.28</b>	<b>\$406,836.65</b>		<b>\$730,790.93</b>
<b>400 Purchased Property Services</b>				
440 Rentals		1,577.65		1,577.65
490 Other Purchased Property Services		837.25		837.25
<b>Total Purchased Property Services</b>		<b>\$2,414.90</b>		<b>\$2,414.90</b>
<b>500 Other Purchased Services</b>				
510 Student Transportation Services	4,411.43	3,034.70		7,446.13
530 Communications		472.56		472.56
561 Tuition To Other School Districts Within the State	49,501.72	57,474.23		106,975.95
567 Tuition To Approved Private Schools (APS) and PA Chartered Schools for the Deaf and Blind		21,915.78		21,915.78
568 Tuition To Private Residential Rehabilitative Institutions (PRRI) [In-State] and Detention Centers	45,765.97	137,798.64		183,564.61
569 Tuition – Other	136,530.00	91,800.00		228,330.00
580 Travel		679.79		679.79
594 IU Payment By Withholding for Institutionalized Children's Programs – Special Classes		2,116.91		2,116.91
<b>Total Other Purchased Services</b>	<b>\$236,209.12</b>	<b>\$315,292.61</b>		<b>\$551,501.73</b>
<b>600 Supplies</b>				
610 General Supplies	3,674.40	5,618.77	37,460.88	46,754.05
640 Books and Periodicals	2,925.49	1,296.30	314.65	4,536.44
650 Supplies & Fees – Technology Related	2,696.92	6,957.93		9,654.85
<b>Total Supplies</b>	<b>\$9,296.81</b>	<b>\$13,873.00</b>	<b>\$37,775.53</b>	<b>\$60,945.34</b>
<b>700 Property</b>				
756 Capitalized Technology Equipment– Original	1,202.99	2,405.98	4,236.00	7,844.97
<b>Total Property</b>	<b>\$1,202.99</b>	<b>\$2,405.98</b>	<b>\$4,236.00</b>	<b>\$7,844.97</b>
<b>800 Other Objects</b>				
810 Dues and Fees	298.00	608.03		906.03
<b>Total Other Objects</b>	<b>\$298.00</b>	<b>\$608.03</b>		<b>\$906.03</b>
<b>Total 1200 Special Programs – Elementary / Secondary</b>	<b>\$1,628,293.54</b>	<b>\$2,570,929.40</b>	<b>\$528,930.90</b>	<b>\$4,728,153.84</b>

LEA : 116496503      Shamokin Area SD

Printed 11/26/2019 7:09:16 PM

<b>General Fund (10)</b>				
<b>1210 Life Skills Support</b>	<b><u>Elementary</u></b>	<b><u>Secondary</u></b>	<b><u>Federal</u></b>	<b><u>Total</u></b>
<b>100 <u>Personnel Services – Salaries</u></b>				
100 Personnel Services – Salaries	141,035.84	261,893.33	85,334.00	488,263.17
<b>Total Personnel Services – Salaries</b>	<b>\$141,035.84</b>	<b>\$261,893.33</b>	<b>\$85,334.00</b>	<b>\$488,263.17</b>
<b>200 <u>Personnel Services – Employee Benefits</u></b>				
210 Group Insurance – Contracted Provider	66,106.42	67,638.52	36,136.07	169,881.01
220 Social Security Contributions	10,458.57	19,660.08	6,350.39	36,469.04
230 PSERS Retirement Contributions	47,067.93	87,163.07	28,527.13	162,758.13
260 Workers' Compensation	1,269.24	2,357.00	768.00	4,394.24
<b>Total Personnel Services – Employee Benefits</b>	<b>\$124,902.16</b>	<b>\$176,818.67</b>	<b>\$71,781.59</b>	<b>\$373,502.42</b>
<b>300 <u>Purchased Professional and Technical Services</u></b>				
322 Professional Educational Services – lus		196,410.14		196,410.14
<b>Total Purchased Professional and Technical Services</b>		<b>\$196,410.14</b>		<b>\$196,410.14</b>
<b>500 <u>Other Purchased Services</u></b>				
510 Student Transportation Services	414.88	1,210.98		1,625.86
<b>Total Other Purchased Services</b>	<b>\$414.88</b>	<b>\$1,210.98</b>		<b>\$1,625.86</b>
<b>600 <u>Supplies</u></b>				
610 General Supplies	437.45	729.92	1,223.75	2,391.12
640 Books and Periodicals		300.06		300.06
650 Supplies & Fees – Technology Related		2,291.34		2,291.34
<b>Total Supplies</b>	<b>\$437.45</b>	<b>\$3,321.32</b>	<b>\$1,223.75</b>	<b>\$4,982.52</b>
<b>Total 1210 Life Skills Support</b>	<b>\$266,790.33</b>	<b>\$639,654.44</b>	<b>\$158,339.34</b>	<b>\$1,064,784.11</b>

LEA : 116496503      Shamokin Area SD

Printed 11/26/2019 7:09:16 PM

General Fund (10)

1220 Sensory Support

	<u>Elementary</u>	<u>Secondary</u>	<u>Federal</u>	<u>Total</u>
<b>100 <u>Personnel Services – Salaries</u></b>				
100 Personnel Services – Salaries		151,942.63		151,942.63
<b>Total Personnel Services – Salaries</b>		<b>\$151,942.63</b>		<b>\$151,942.63</b>
<b>200 <u>Personnel Services – Employee Benefits</u></b>				
210 Group Insurance – Contracted Provider		39,512.59		39,512.59
220 Social Security Contributions		11,352.94		11,352.94
230 PSERS Retirement Contributions		50,794.51		50,794.51
260 Workers' Compensation		1,367.57		1,367.57
<b>Total Personnel Services – Employee Benefits</b>		<b>\$103,027.61</b>		<b>\$103,027.61</b>
<b>300 <u>Purchased Professional and Technical Services</u></b>				
322 Professional Educational Services – Ius	93,888.24	30,739.78		124,628.02
<b>Total Purchased Professional and Technical Services</b>	<b>\$93,888.24</b>	<b>\$30,739.78</b>		<b>\$124,628.02</b>
<b>500 <u>Other Purchased Services</u></b>				
561 Tuition To Other School Districts Within the State		22.57		22.57
<b>Total Other Purchased Services</b>		<b>\$22.57</b>		<b>\$22.57</b>
<b>600 <u>Supplies</u></b>				
610 General Supplies	566.40			566.40
640 Books and Periodicals	178.87			178.87
<b>Total Supplies</b>	<b>\$745.27</b>			<b>\$745.27</b>
<b>800 <u>Other Objects</u></b>				
810 Dues and Fees	298.00			298.00
<b>Total Other Objects</b>	<b>\$298.00</b>			<b>\$298.00</b>
<b>Total 1220 Sensory Support</b>	<b>\$94,931.51</b>	<b>\$285,732.59</b>		<b>\$380,664.10</b>

LEA : 116496503      Shamokin Area SD

Printed 11/26/2019 7:09:16 PM

<b>General Fund (10)</b>				
<b>1230 Emotional Support</b>	<u>Elementary</u>	<u>Secondary</u>	<u>Federal</u>	<u>Total</u>
<b>100 <u>Personnel Services – Salaries</u></b>				
100 Personnel Services – Salaries	144,206.78	225,917.58	56,805.00	426,929.36
<b>Total Personnel Services – Salaries</b>	<b>\$144,206.78</b>	<b>\$225,917.58</b>	<b>\$56,805.00</b>	<b>\$426,929.36</b>
<b>200 <u>Personnel Services – Employee Benefits</u></b>				
210 Group Insurance – Contracted Provider	66,380.71	78,280.28	9,212.53	153,873.52
220 Social Security Contributions	10,844.49	16,707.27	4,244.27	31,796.03
230 PSERS Retirement Contributions	48,208.56	75,443.84	18,989.87	142,642.27
260 Workers' Compensation	1,298.00	2,033.38	511.17	3,842.55
<b>Total Personnel Services – Employee Benefits</b>	<b>\$126,731.76</b>	<b>\$172,464.77</b>	<b>\$32,957.84</b>	<b>\$332,154.37</b>
<b>300 <u>Purchased Professional and Technical Services</u></b>				
322 Professional Educational Services – Ius		104,208.70		104,208.70
330 Other Professional Services	183,808.75			183,808.75
<b>Total Purchased Professional and Technical Services</b>	<b>\$183,808.75</b>	<b>\$104,208.70</b>		<b>\$288,017.45</b>
<b>500 <u>Other Purchased Services</u></b>				
510 Student Transportation Services	45.20	109.80		155.00
561 Tuition To Other School Districts Within the State		29,104.66		29,104.66
568 Tuition To Private Residential Rehabilitative Institutions (PRRI) [In-State] and Detention Centers	12,463.00	46,573.03		59,036.03
569 Tuition – Other	136,530.00	91,800.00		228,330.00
<b>Total Other Purchased Services</b>	<b>\$149,038.20</b>	<b>\$167,587.49</b>		<b>\$316,625.69</b>
<b>600 <u>Supplies</u></b>				
610 General Supplies	1,993.61	498.73	2,558.59	5,050.93
640 Books and Periodicals	2,606.65			2,606.65
<b>Total Supplies</b>	<b>\$4,600.26</b>	<b>\$498.73</b>	<b>\$2,558.59</b>	<b>\$7,657.58</b>
<b>Total 1230 Emotional Support</b>	<b>\$608,385.75</b>	<b>\$670,677.27</b>	<b>\$92,321.43</b>	<b>\$1,371,384.45</b>

LEA : 116496503      Shamokin Area SD

Printed 11/26/2019 7:09:16 PM

General Fund (10)

1240 Academic Support	Elementary	Secondary	Federal	Total
<b>100 <u>Personnel Services – Salaries</u></b>				
100 Personnel Services – Salaries	232,784.53	389,679.87	2,200.60	624,665.00
<b>Total Personnel Services – Salaries</b>	<b>\$232,784.53</b>	<b>\$389,679.87</b>	<b>\$2,200.60</b>	<b>\$624,665.00</b>
<b>200 <u>Personnel Services – Employee Benefits</u></b>				
210 Group Insurance – Contracted Provider	67,883.45	135,763.42		203,646.87
220 Social Security Contributions	17,435.67	29,361.77	168.36	46,965.80
230 PSERS Retirement Contributions	77,819.61	131,856.94	735.67	210,412.22
250 Unemployment Compensation		5.20		5.20
260 Workers' Compensation	2,095.01	3,508.64	19.81	5,623.46
270 Group Insurance – Self-Insurance	6,000.00	8,925.00		14,925.00
<b>Total Personnel Services – Employee Benefits</b>	<b>\$171,233.74</b>	<b>\$309,420.97</b>	<b>\$923.84</b>	<b>\$481,578.55</b>
<b>300 <u>Purchased Professional and Technical Services</u></b>				
323 Professional Educational Services – Other Educational Agencies		14,034.00		14,034.00
330 Other Professional Services		600.00		600.00
<b>Total Purchased Professional and Technical Services</b>		<b>\$14,634.00</b>		<b>\$14,634.00</b>
<b>400 <u>Purchased Property Services</u></b>				
440 Rentals		1,577.65		1,577.65
490 Other Purchased Property Services		837.25		837.25
<b>Total Purchased Property Services</b>		<b>\$2,414.90</b>		<b>\$2,414.90</b>
<b>500 <u>Other Purchased Services</u></b>				
510 Student Transportation Services	161.35			161.35
530 Communications		472.56		472.56
561 Tuition To Other School Districts Within the State	34,144.48	28,347.00		62,491.48
568 Tuition To Private Residential Rehabilitative Institutions (PRRI) [In-State] and Detention Centers	23,119.40	28,620.91		51,740.31
580 Travel		679.79		679.79
<b>Total Other Purchased Services</b>	<b>\$57,425.23</b>	<b>\$58,120.26</b>		<b>\$115,545.49</b>
<b>600 <u>Supplies</u></b>				
610 General Supplies	610.62	3,072.78	32,399.26	36,082.66
640 Books and Periodicals	139.97	996.24	314.65	1,450.86
650 Supplies & Fees – Technology Related	2,696.92	4,666.59		7,363.51
<b>Total Supplies</b>	<b>\$3,447.51</b>	<b>\$8,735.61</b>	<b>\$32,713.91</b>	<b>\$44,897.03</b>
<b>700 <u>Property</u></b>				
756 Capitalized Technology Equipment – Original	1,202.99	2,405.98	4,236.00	7,844.97
<b>Total Property</b>	<b>\$1,202.99</b>	<b>\$2,405.98</b>	<b>\$4,236.00</b>	<b>\$7,844.97</b>
<b>800 <u>Other Objects</u></b>				
810 Dues and Fees		608.03		608.03
<b>Total Other Objects</b>		<b>\$608.03</b>		<b>\$608.03</b>
<b>Total 1240 Academic Support</b>	<b>\$466,094.00</b>	<b>\$786,019.62</b>	<b>\$40,074.35</b>	<b>\$1,292,187.97</b>



LEA : 116496503      Shamokin Area SD

Printed 11/26/2019 7:09:16 PM

General Fund (10)

1241 Learning Support – Public	Elementary	Secondary	Federal	Total
<b>100 Personnel Services – Salaries</b>				
100 Personnel Services – Salaries	232,784.53	389,679.87	2,200.60	624,665.00
<b>Total Personnel Services – Salaries</b>	<b>\$232,784.53</b>	<b>\$389,679.87</b>	<b>\$2,200.60</b>	<b>\$624,665.00</b>
<b>200 Personnel Services – Employee Benefits</b>				
210 Group Insurance – Contracted Provider	67,883.45	135,763.42		203,646.87
220 Social Security Contributions	17,435.67	29,361.77	168.36	46,965.80
230 PSERS Retirement Contributions	77,819.61	131,856.94	735.67	210,412.22
250 Unemployment Compensation		5.20		5.20
260 Workers' Compensation	2,095.01	3,508.64	19.81	5,623.46
270 Group Insurance – Self-Insurance	6,000.00	8,925.00		14,925.00
<b>Total Personnel Services – Employee Benefits</b>	<b>\$171,233.74</b>	<b>\$309,420.97</b>	<b>\$923.84</b>	<b>\$481,578.55</b>
<b>300 Purchased Professional and Technical Services</b>				
323 Professional Educational Services – Other Educational Agencies		14,034.00		14,034.00
330 Other Professional Services		600.00		600.00
<b>Total Purchased Professional and Technical Services</b>		<b>\$14,634.00</b>		<b>\$14,634.00</b>
<b>400 Purchased Property Services</b>				
440 Rentals		1,577.65		1,577.65
490 Other Purchased Property Services		837.25		837.25
<b>Total Purchased Property Services</b>		<b>\$2,414.90</b>		<b>\$2,414.90</b>
<b>500 Other Purchased Services</b>				
510 Student Transportation Services	161.35			161.35
530 Communications		472.56		472.56
580 Travel		679.79		679.79
<b>Total Other Purchased Services</b>	<b>\$161.35</b>	<b>\$1,152.35</b>		<b>\$1,313.70</b>
<b>600 Supplies</b>				
610 General Supplies	466.39	3,072.78	32,399.26	35,938.43
640 Books and Periodicals	108.49	996.24	314.65	1,419.38
650 Supplies & Fees – Technology Related	2,696.92	4,666.59		7,363.51
<b>Total Supplies</b>	<b>\$3,271.80</b>	<b>\$8,735.61</b>	<b>\$32,713.91</b>	<b>\$44,721.32</b>
<b>700 Property</b>				
756 Capitalized Technology Equipment – Original	1,202.99	2,405.98	4,236.00	7,844.97
<b>Total Property</b>	<b>\$1,202.99</b>	<b>\$2,405.98</b>	<b>\$4,236.00</b>	<b>\$7,844.97</b>
<b>800 Other Objects</b>				
810 Dues and Fees		595.00		595.00
<b>Total Other Objects</b>		<b>\$595.00</b>		<b>\$595.00</b>
<b>Total 1241 Learning Support – Public</b>	<b>\$408,654.41</b>	<b>\$729,038.68</b>	<b>\$40,074.35</b>	<b>\$1,177,767.44</b>

LEA : 116496503     Shamokin Area SD

Printed 11/26/2019 7:09:16 PM

General Fund (10)

1242 Learning Support – PRRI

	<u>Elementary</u>	<u>Secondary</u>	<u>Federal</u>	<u>Total</u>
<b>500 <u>Other Purchased Services</u></b>				
561 Tuition To Other School Districts Within the State	34,144.48	28,347.00		62,491.48
568 Tuition To Private Residential Rehabilitative Institutions (PRRI) [In-State] and Detention Centers	23,119.40	28,620.91		51,740.31
<b>Total Other Purchased Services</b>	<b>\$57,263.88</b>	<b>\$56,967.91</b>		<b>\$114,231.79</b>
<b>800 <u>Other Objects</u></b>				
810 Dues and Fees		13.03		13.03
<b>Total Other Objects</b>		<b>\$13.03</b>		<b>\$13.03</b>
<b>Total 1242 Learning Support – PRRI</b>	<b>\$57,263.88</b>	<b>\$56,980.94</b>		<b>\$114,244.82</b>

LEA : 116496503     Shamokin Area SD

Printed 11/26/2019 7:09:16 PM

General Fund (10)

1243 Gifted Support

	<u>Elementary</u>	<u>Secondary</u>	<u>Federal</u>	<u>Total</u>
600 <u>Supplies</u>				
610 General Supplies	144.23			144.23
640 Books and Periodicals	31.48			31.48
<b>Total Supplies</b>	<b>\$175.71</b>			<b>\$175.71</b>
<b>Total 1243 Gifted Support</b>	<b>\$175.71</b>			<b>\$175.71</b>

LEA : 116496503     Shamokin Area SD

Printed 11/26/2019 7:09:16 PM

General Fund (10)

1260 Physical Support

	<u>Elementary</u>	<u>Secondary</u>	<u>Federal</u>	<u>Total</u>
300 <u>Purchased Professional and Technical Services</u>				
322 Professional Educational Services – lus	780.00			780.00
<b>Total Purchased Professional and Technical Services</b>	<b>\$780.00</b>			<b>\$780.00</b>
<b>Total 1260 Physical Support</b>	<b>\$780.00</b>			<b>\$780.00</b>

LEA : 116496503      Shamokin Area SD

Printed 11/26/2019 7:09:16 PM

<b>General Fund (10)</b>				
<b>1270 Multi-Handicapped Support</b>	<b><u>Elementary</u></b>	<b><u>Secondary</u></b>	<b><u>Federal</u></b>	<b><u>Total</u></b>
<b>100 <u>Personnel Services – Salaries</u></b>				
100 Personnel Services – Salaries	71,704.05	20,256.42	125,768.25	217,728.72
<b>Total Personnel Services – Salaries</b>	<b>\$71,704.05</b>	<b>\$20,256.42</b>	<b>\$125,768.25</b>	<b>\$217,728.72</b>
<b>200 <u>Personnel Services – Employee Benefits</u></b>				
210 Group Insurance – Contracted Provider	14,667.93	9,602.04	58,548.32	82,818.29
220 Social Security Contributions	5,449.23	1,520.34	9,423.73	16,393.30
230 PSERS Retirement Contributions	23,970.77	6,771.71	42,044.29	72,786.77
260 Workers' Compensation	645.55	182.29	1,131.91	1,959.75
<b>Total Personnel Services – Employee Benefits</b>	<b>\$44,733.48</b>	<b>\$18,076.38</b>	<b>\$111,148.25</b>	<b>\$173,958.11</b>
<b>300 <u>Purchased Professional and Technical Services</u></b>				
322 Professional Educational Services – Ius	45,152.57			45,152.57
<b>Total Purchased Professional and Technical Services</b>	<b>\$45,152.57</b>			<b>\$45,152.57</b>
<b>500 <u>Other Purchased Services</u></b>				
510 Student Transportation Services		1,713.92		1,713.92
<b>Total Other Purchased Services</b>		<b>\$1,713.92</b>		<b>\$1,713.92</b>
<b>600 <u>Supplies</u></b>				
610 General Supplies	66.32	1,317.34	1,279.28	2,662.94
<b>Total Supplies</b>	<b>\$66.32</b>	<b>\$1,317.34</b>	<b>\$1,279.28</b>	<b>\$2,662.94</b>
<b>Total 1270 Multi-Handicapped Support</b>	<b>\$161,656.42</b>	<b>\$41,364.06</b>	<b>\$238,195.78</b>	<b>\$441,216.26</b>

LEA : 116496503      Shamokin Area SD

Printed 11/26/2019 7:09:16 PM

<b>General Fund (10)</b>				
<b>1290 Special Programs - Other Support</b>	<u><b>Elementary</b></u>	<u><b>Secondary</b></u>	<u><b>Federal</b></u>	<u><b>Total</b></u>
<b>300 <u>Purchased Professional and Technical Services</u></b>				
322 Professional Educational Services – lus	324.72	60,844.03		61,168.75
<b>Total Purchased Professional and Technical Services</b>	<b>\$324.72</b>	<b>\$60,844.03</b>		<b>\$61,168.75</b>
<b>500 <u>Other Purchased Services</u></b>				
510 Student Transportation Services	3,790.00			3,790.00
561 Tuition To Other School Districts Within the State	15,357.24			15,357.24
567 Tuition To Approved Private Schools (APS) and PA Chartered Schools for the Deaf and Blind		21,915.78		21,915.78
568 Tuition To Private Residential Rehabilitative Institutions (PRRI) [In-State] and Detention Centers	10,183.57	62,604.70		72,788.27
594 IU Payment By Withholding for Institutionalized Children’s Programs – Special Classes		2,116.91		2,116.91
<b>Total Other Purchased Services</b>	<b>\$29,330.81</b>	<b>\$86,637.39</b>		<b>\$115,968.20</b>
<b>Total 1290 Special Programs - Other Support</b>	<b>\$29,655.53</b>	<b>\$147,481.42</b>		<b>\$177,136.95</b>

LEA : 116496503      Shamokin Area SD

Printed 11/26/2019 7:09:16 PM

<b>General Fund (10)</b>				
<b>1300 Vocational Education</b>	<b><u>Elementary</u></b>	<b><u>Secondary</u></b>	<b><u>Federal</u></b>	<b><u>Total</u></b>
<b>100 <u>Personnel Services – Salaries</u></b>				
100 Personnel Services – Salaries		280,103.70		280,103.70
<b>Total Personnel Services – Salaries</b>		<b>\$280,103.70</b>		<b>\$280,103.70</b>
<b>200 <u>Personnel Services – Employee Benefits</u></b>				
210 Group Insurance – Contracted Provider		99,533.76		99,533.76
220 Social Security Contributions		20,359.32		20,359.32
230 PSERS Retirement Contributions		104,087.76		104,087.76
260 Workers' Compensation		2,521.08		2,521.08
<b>Total Personnel Services – Employee Benefits</b>		<b>\$226,501.92</b>		<b>\$226,501.92</b>
<b>400 <u>Purchased Property Services</u></b>				
430 Repairs and Maintenance Services		3,366.00		3,366.00
<b>Total Purchased Property Services</b>		<b>\$3,366.00</b>		<b>\$3,366.00</b>
<b>500 <u>Other Purchased Services</u></b>				
564 Tuition To Career and Technology Centers		905,043.00		905,043.00
580 Travel		83.42		83.42
<b>Total Other Purchased Services</b>		<b>\$905,126.42</b>		<b>\$905,126.42</b>
<b>600 <u>Supplies</u></b>				
610 General Supplies		21,039.00		21,039.00
640 Books and Periodicals		4,275.53		4,275.53
<b>Total Supplies</b>		<b>\$25,314.53</b>		<b>\$25,314.53</b>
<b>Total 1300 Vocational Education</b>		<b>\$1,440,412.57</b>		<b>\$1,440,412.57</b>

LEA : 116496503      Shamokin Area SD

Printed 11/26/2019 7:09:16 PM

General Fund (10)				
1400 Other Instructional Programs – Elementary / Secondary	<u>Elementary</u>	<u>Secondary</u>	<u>Federal</u>	<u>Total</u>
100 <u>Personnel Services – Salaries</u>				
100 Personnel Services – Salaries		104,639.98	28,675.00	133,314.98
Total Personnel Services – Salaries		\$104,639.98	\$28,675.00	\$133,314.98
200 <u>Personnel Services – Employee Benefits</u>				
210 Group Insurance – Contracted Provider		40,246.98		40,246.98
220 Social Security Contributions		7,845.33	2,194.00	10,039.33
230 PSERS Retirement Contributions		34,981.18	9,586.17	44,567.35
260 Workers' Compensation		941.96	258.19	1,200.15
Total Personnel Services – Employee Benefits		\$84,015.45	\$12,038.36	\$96,053.81
300 <u>Purchased Professional and Technical Services</u>				
322 Professional Educational Services – Ius		24,791.98		24,791.98
323 Professional Educational Services – Other Educational Agencies		10,675.50		10,675.50
Total Purchased Professional and Technical Services		\$35,467.48		\$35,467.48
500 <u>Other Purchased Services</u>				
561 Tuition To Other School Districts Within the State	550.00	20,484.81		21,034.81
568 Tuition To Private Residential Rehabilitative Institutions (PRRI) [In-State] and Detention Centers	9,608.91	122,888.79		132,497.70
Total Other Purchased Services	\$10,158.91	\$143,373.60		\$153,532.51
600 <u>Supplies</u>				
650 Supplies & Fees – Technology Related		374.50		374.50
Total Supplies		\$374.50		\$374.50
800 <u>Other Objects</u>				
810 Dues and Fees	20.87	153.08		173.95
Total Other Objects	\$20.87	\$153.08		\$173.95
Total 1400 Other Instructional Programs – Elementary / Secondary	\$10,179.78	\$368,024.09	\$40,713.36	\$418,917.23



LEA : 116496503      Shamokin Area SD

Printed 11/26/2019 7:09:16 PM

General Fund (10)

1420 Summer School

	<u>Elementary</u>	<u>Secondary</u>	<u>Federal</u>	<u>Total</u>
<b>100 <u>Personnel Services – Salaries</u></b>				
100 Personnel Services – Salaries		2,109.00		2,109.00
<b>Total Personnel Services – Salaries</b>		<b>\$2,109.00</b>		<b>\$2,109.00</b>
<b>200 <u>Personnel Services – Employee Benefits</u></b>				
220 Social Security Contributions		161.34		161.34
230 PSERS Retirement Contributions		705.04		705.04
260 Workers’ Compensation		18.98		18.98
<b>Total Personnel Services – Employee Benefits</b>		<b>\$885.36</b>		<b>\$885.36</b>
<b>Total 1420 Summer School</b>		<b>\$2,994.36</b>		<b>\$2,994.36</b>

LEA : 116496503      Shamokin Area SD

Printed 11/26/2019 7:09:16 PM

General Fund (10)

1430 Homebound Instruction	<u>Elementary</u>	<u>Secondary</u>	<u>Federal</u>	<u>Total</u>
<b>100 <u>Personnel Services – Salaries</u></b>				
100 Personnel Services – Salaries		3,408.66		3,408.66
<b>Total Personnel Services – Salaries</b>		<b>\$3,408.66</b>		<b>\$3,408.66</b>
<b>200 <u>Personnel Services – Employee Benefits</u></b>				
220 Social Security Contributions		260.78		260.78
230 PSERS Retirement Contributions		1,139.52		1,139.52
260 Workers’ Compensation		30.67		30.67
<b>Total Personnel Services – Employee Benefits</b>		<b>\$1,430.97</b>		<b>\$1,430.97</b>
<b>Total 1430 Homebound Instruction</b>		<b>\$4,839.63</b>		<b>\$4,839.63</b>

LEA : 116496503      Shamokin Area SD

Printed 11/26/2019 7:09:16 PM

General Fund (10)

1440 Alternative Regular Education Programs	Elementary	Secondary	Federal	Total
<b>100 Personnel Services – Salaries</b>				
100 Personnel Services – Salaries		99,122.32		99,122.32
<b>Total Personnel Services – Salaries</b>		<b>\$99,122.32</b>		<b>\$99,122.32</b>
<b>200 Personnel Services – Employee Benefits</b>				
210 Group Insurance – Contracted Provider		40,246.98		40,246.98
220 Social Security Contributions		7,423.21		7,423.21
230 PSERS Retirement Contributions		33,136.62		33,136.62
260 Workers' Compensation		892.31		892.31
<b>Total Personnel Services – Employee Benefits</b>		<b>\$81,699.12</b>		<b>\$81,699.12</b>
<b>300 Purchased Professional and Technical Services</b>				
322 Professional Educational Services – Ius		24,791.98		24,791.98
323 Professional Educational Services – Other Educational Agencies		10,675.50		10,675.50
<b>Total Purchased Professional and Technical Services</b>		<b>\$35,467.48</b>		<b>\$35,467.48</b>
<b>500 Other Purchased Services</b>				
561 Tuition To Other School Districts Within the State	550.00	20,484.81		21,034.81
568 Tuition To Private Residential Rehabilitative Institutions (PRRI) [In-State] and Detention Centers	9,608.91	122,888.79		132,497.70
<b>Total Other Purchased Services</b>	<b>\$10,158.91</b>	<b>\$143,373.60</b>		<b>\$153,532.51</b>
<b>600 Supplies</b>				
650 Supplies & Fees – Technology Related		374.50		374.50
<b>Total Supplies</b>		<b>\$374.50</b>		<b>\$374.50</b>
<b>800 Other Objects</b>				
810 Dues and Fees	20.87	153.08		173.95
<b>Total Other Objects</b>	<b>\$20.87</b>	<b>\$153.08</b>		<b>\$173.95</b>
<b>Total 1440 Alternative Regular Education Programs</b>	<b>\$10,179.78</b>	<b>\$360,190.10</b>		<b>\$370,369.88</b>

LEA : 116496503      Shamokin Area SD

Printed 11/26/2019 7:09:16 PM

General Fund (10)				
1441 Adjudicated / Court-Placed Programs	<u>Elementary</u>	<u>Secondary</u>	<u>Federal</u>	<u>Total</u>
300 <u>Purchased Professional and Technical Services</u>				
322 Professional Educational Services – Ius		24,791.98		24,791.98
323 Professional Educational Services – Other Educational Agencies		8,082.00		8,082.00
<b>Total Purchased Professional and Technical Services</b>		<b>\$32,873.98</b>		<b>\$32,873.98</b>
500 <u>Other Purchased Services</u>				
561 Tuition To Other School Districts Within the State		7,300.46		7,300.46
568 Tuition To Private Residential Rehabilitative Institutions (PRRI) [In-State] and Detention Centers	347.91	2,551.34		2,899.25
<b>Total Other Purchased Services</b>	<b>\$347.91</b>	<b>\$9,851.80</b>		<b>\$10,199.71</b>
600 <u>Supplies</u>				
650 Supplies & Fees – Technology Related		224.70		224.70
<b>Total Supplies</b>		<b>\$224.70</b>		<b>\$224.70</b>
800 <u>Other Objects</u>				
810 Dues and Fees	20.87	153.08		173.95
<b>Total Other Objects</b>	<b>\$20.87</b>	<b>\$153.08</b>		<b>\$173.95</b>
<b>Total 1441 Adjudicated / Court-Placed Programs</b>	<b>\$368.78</b>	<b>\$43,103.56</b>		<b>\$43,472.34</b>

LEA : 116496503      Shamokin Area SD

Printed 11/26/2019 7:09:16 PM

<b>General Fund (10)</b>				
<b>1442 Alternative Education Programs</b>	<u><b>Elementary</b></u>	<u><b>Secondary</b></u>	<u><b>Federal</b></u>	<u><b>Total</b></u>
<b>100 <u>Personnel Services – Salaries</u></b>				
100 Personnel Services – Salaries		99,122.32		99,122.32
<b>Total Personnel Services – Salaries</b>		<b>\$99,122.32</b>		<b>\$99,122.32</b>
<b>200 <u>Personnel Services – Employee Benefits</u></b>				
210 Group Insurance – Contracted Provider		40,246.98		40,246.98
220 Social Security Contributions		7,423.21		7,423.21
230 PSERS Retirement Contributions		33,136.62		33,136.62
260 Workers' Compensation		892.31		892.31
<b>Total Personnel Services – Employee Benefits</b>		<b>\$81,699.12</b>		<b>\$81,699.12</b>
<b>300 <u>Purchased Professional and Technical Services</u></b>				
323 Professional Educational Services – Other Educational Agencies		2,593.50		2,593.50
<b>Total Purchased Professional and Technical Services</b>		<b>\$2,593.50</b>		<b>\$2,593.50</b>
<b>500 <u>Other Purchased Services</u></b>				
561 Tuition To Other School Districts Within the State	550.00	13,184.35		13,734.35
568 Tuition To Private Residential Rehabilitative Institutions (PRRI) [In-State] and Detention Centers	9,261.00	120,337.45		129,598.45
<b>Total Other Purchased Services</b>	<b>\$9,811.00</b>	<b>\$133,521.80</b>		<b>\$143,332.80</b>
<b>600 <u>Supplies</u></b>				
650 Supplies & Fees – Technology Related		149.80		149.80
<b>Total Supplies</b>		<b>\$149.80</b>		<b>\$149.80</b>
<b>Total 1442 Alternative Education Programs</b>	<b>\$9,811.00</b>	<b>\$317,086.54</b>		<b>\$326,897.54</b>

LEA : 116496503      Shamokin Area SD

Printed 11/26/2019 7:09:16 PM

General Fund (10)

1450 Instructional Programs Outside the Established School Day	<u>Elementary</u>	<u>Secondary</u>	<u>Federal</u>	<u>Total</u>
100 <u>Personnel Services – Salaries</u>				
100 Personnel Services – Salaries			28,675.00	28,675.00
Total Personnel Services – Salaries			\$28,675.00	\$28,675.00
200 <u>Personnel Services – Employee Benefits</u>				
220 Social Security Contributions			2,194.00	2,194.00
230 PSERS Retirement Contributions			9,586.17	9,586.17
260 Workers’ Compensation			258.19	258.19
Total Personnel Services – Employee Benefits			\$12,038.36	\$12,038.36
Total 1450 Instructional Programs Outside the Established School Day			\$40,713.36	\$40,713.36

LEA : 116496503     Shamokin Area SD

Printed 11/26/2019 7:09:16 PM

General Fund (10)

1500 Nonpublic School Programs

300 Purchased Professional and Technical Services

	<u>Elementary</u>	<u>Secondary</u>	<u>Federal</u>	<u>Total</u>
322 Professional Educational Services – lus			26,039.00	26,039.00
<b>Total Purchased Professional and Technical Services</b>			<b>\$26,039.00</b>	<b>\$26,039.00</b>
<b>Total 1500 Nonpublic School Programs</b>			<b>\$26,039.00</b>	<b>\$26,039.00</b>

LEA : 116496503      Shamokin Area SD

Printed 11/26/2019 7:09:16 PM

<b>General Fund (10)</b>				
<b>1800 Pre-Kindergarten</b>	<b><u>Elementary</u></b>	<b><u>Secondary</u></b>	<b><u>Federal</u></b>	<b><u>Total</u></b>
<b>100 <u>Personnel Services – Salaries</u></b>				
100 Personnel Services – Salaries				188,565.03
<b>Total Personnel Services – Salaries</b>				<b>\$188,565.03</b>
<b>200 <u>Personnel Services – Employee Benefits</u></b>				
210 Group Insurance – Contracted Provider				38,089.64
220 Social Security Contributions				14,179.10
230 PSERS Retirement Contributions				62,997.12
250 Unemployment Compensation				(5.20)
260 Workers' Compensation				1,695.78
<b>Total Personnel Services – Employee Benefits</b>				<b>\$116,956.44</b>
<b>300 <u>Purchased Professional and Technical Services</u></b>				
360 Employee Training and Development Services				150.00
<b>Total Purchased Professional and Technical Services</b>				<b>\$150.00</b>
<b>400 <u>Purchased Property Services</u></b>				
410 Cleaning Services				1,558.00
<b>Total Purchased Property Services</b>				<b>\$1,558.00</b>
<b>500 <u>Other Purchased Services</u></b>				
510 Student Transportation Services				730.57
580 Travel				24.53
<b>Total Other Purchased Services</b>				<b>\$755.10</b>
<b>600 <u>Supplies</u></b>				
610 General Supplies				34,743.14
630 Food				5,228.80
640 Books and Periodicals				6,228.72
650 Supplies & Fees – Technology Related				430.00
<b>Total Supplies</b>				<b>\$46,630.66</b>
<b>700 <u>Property</u></b>				
752 Capital Equipment – Original and Additional				7,347.00
756 Capitalized Technology Equipment – Original				5,854.00
<b>Total Property</b>				<b>\$13,201.00</b>
<b>800 <u>Other Objects</u></b>				
810 Dues and Fees				200.00
<b>Total Other Objects</b>				<b>\$200.00</b>
<b>Total 1800 Pre-Kindergarten</b>				<b>\$368,016.23</b>



LEA : 116496503      Shamokin Area SD

Printed 11/26/2019 7:09:16 PM

General Fund (10)				
1801 Pre-K Instruction	<u>Elementary</u>	<u>Secondary</u>	<u>Federal</u>	<u>Total</u>
100 <u>Personnel Services – Salaries</u>				
100 Personnel Services – Salaries				188,565.03
Total Personnel Services – Salaries				\$188,565.03
200 <u>Personnel Services – Employee Benefits</u>				
210 Group Insurance – Contracted Provider				38,089.64
220 Social Security Contributions				14,179.10
230 PSERS Retirement Contributions				62,997.12
250 Unemployment Compensation				(5.20)
260 Workers' Compensation				1,695.78
Total Personnel Services – Employee Benefits				\$116,956.44
400 <u>Purchased Property Services</u>				
410 Cleaning Services				1,558.00
Total Purchased Property Services				\$1,558.00
500 <u>Other Purchased Services</u>				
510 Student Transportation Services				730.57
580 Travel				24.53
Total Other Purchased Services				\$755.10
600 <u>Supplies</u>				
610 General Supplies				34,743.14
640 Books and Periodicals				6,228.72
650 Supplies & Fees – Technology Related				430.00
Total Supplies				\$41,401.86
700 <u>Property</u>				
752 Capital Equipment – Original and Additional				7,347.00
756 Capitalized Technology Equipment – Original				5,854.00
Total Property				\$13,201.00
800 <u>Other Objects</u>				
810 Dues and Fees				200.00
Total Other Objects				\$200.00
Total 1801 Pre-K Instruction				\$362,637.43

LEA : 116496503      Shamokin Area SD

Printed 11/26/2019 7:09:16 PM

General Fund (10)

1805 Pre-K Food Services

<u>Elementary</u>	<u>Secondary</u>	<u>Federal</u>	<u>Total</u>
-------------------	------------------	----------------	--------------

600 <u>Supplies</u>				
630 Food				5,228.80

Total Supplies				\$5,228.80
Total 1805 Pre-K Food Services				\$5,228.80

LEA : 116496503     Shamokin Area SD

Printed 11/26/2019 7:09:16 PM

General Fund (10)

1806 Pre-K Professional Development	<u>Elementary</u>	<u>Secondary</u>	<u>Federal</u>	<u>Total</u>
300 <u>Purchased Professional and Technical Services</u>				
360 Employee Training and Development Services				150.00
Total Purchased Professional and Technical Services				\$150.00
Total 1806 Pre-K Professional Development				\$150.00

LEA : 116496503      Shamokin Area SD

Printed 11/26/2019 7:09:24 PM

General Fund (10)

2000 Support Services

Total

100	<u>Personnel Services – Salaries</u>	
100	Personnel Services – Salaries	3,502,143.05
<b>Total Personnel Services – Salaries</b>		<b>\$3,502,143.05</b>
200	<u>Personnel Services – Employee Benefits</u>	
210	Group Insurance – Contracted Provider	1,145,130.72
220	Social Security Contributions	264,681.59
230	PSERS Retirement Contributions	1,101,452.66
240	Tuition Reimbursement	104,124.36
250	Unemployment Compensation	(574.54)
260	Workers' Compensation	31,595.02
270	Group Insurance – Self-Insurance	76,137.12
291	Other Retirement Plans	21,448.65
<b>Total Personnel Services – Employee Benefits</b>		<b>\$2,743,995.58</b>
300	<u>Purchased Professional and Technical Services</u>	
310	Official / Administrative Services	21,093.56
322	Professional Educational Services – Ius	4,782.00
329	Professional Educational Services – Other	16,262.60
330	Other Professional Services	119,078.50
360	Employee Training and Development Services	43,814.97
390	Other Purchased Professional and Technical Services	33,787.05
<b>Total Purchased Professional and Technical Services</b>		<b>\$238,818.68</b>
400	<u>Purchased Property Services</u>	
410	Cleaning Services	41,596.08
420	Utility Services	104,413.85
430	Repairs and Maintenance Services	67,850.31
440	Rentals	41,605.30
450	Construction Services	23,065.06
490	Other Purchased Property Services	8,227.25
<b>Total Purchased Property Services</b>		<b>\$286,757.85</b>
500	<u>Other Purchased Services</u>	
513	Contracted Carriers	1,217,630.06
516	Student Transportation Services From the IU	53,571.49
520	Insurance – General	420.00
522	Automotive Liability Insurance	21,125.00
523	General Property and Liability Insurance	101,412.00
529	Other Insurance	11,998.45
530	Communications	38,993.27
549	Other Advertising/Public Relations	2,943.34
580	Travel	3,242.87
<b>Total Other Purchased Services</b>		<b>\$1,451,336.48</b>
600	<u>Supplies</u>	
610	General Supplies	298,538.35
620	Energy	229,519.89
630	Food	809.60

LEA : 116496503      Shamokin Area SD

Printed 11/26/2019 7:09:24 PM

General Fund (10)

2000 Support Services

Total

600 <u>Supplies</u>	
640 Books and Periodicals	4,413.30
650 Supplies & Fees – Technology Related	106,066.35
<b>Total Supplies</b>	<b>\$639,347.49</b>
700 <u>Property</u>	
752 Capital Equipment – Original and Additional	34,908.87
756 Capitalized Technology Equipment – Original	186,650.57
762 Capitalized Equipment - Replacement	12,836.92
766 Capitalized Technology Equipment – Replacement	2,660.00
<b>Total Property</b>	<b>\$237,056.36</b>
800 <u>Other Objects</u>	
810 Dues and Fees	14,308.98
890 Miscellaneous Expenditures	71.02
<b>Total Other Objects</b>	<b>\$14,380.00</b>
<b>Total 2000 Support Services</b>	<b>\$9,113,835.49</b>

LEA : 116496503      Shamokin Area SD

Printed 11/26/2019 7:09:24 PM

General Fund (10)

2100 Support Services – Students	Elementary	Secondary	Federal	Total
100 <u>Personnel Services – Salaries</u>				
100 Personnel Services – Salaries	86,090.60	150,257.72	323.75	324,024.02
<b>Total Personnel Services – Salaries</b>	<b>\$86,090.60</b>	<b>\$150,257.72</b>	<b>\$323.75</b>	<b>\$324,024.02</b>
200 <u>Personnel Services – Employee Benefits</u>				
210 Group Insurance – Contracted Provider	21,239.15	51,895.33		91,590.56
220 Social Security Contributions	6,489.93	10,948.94	24.76	24,046.72
230 PSERS Retirement Contributions	28,445.76	50,231.25	108.23	107,933.53
260 Workers' Compensation	774.79	1,352.35	2.91	2,916.10
270 Group Insurance – Self-Insurance		10,000.00		10,000.00
<b>Total Personnel Services – Employee Benefits</b>	<b>\$56,949.63</b>	<b>\$124,427.87</b>	<b>\$135.90</b>	<b>\$236,486.91</b>
300 <u>Purchased Professional and Technical Services</u>				
322 Professional Educational Services – lus				582.00
329 Professional Educational Services – Other	1,500.00	3,987.60		5,487.60
<b>Total Purchased Professional and Technical Services</b>	<b>\$1,500.00</b>	<b>\$3,987.60</b>		<b>\$6,069.60</b>
500 <u>Other Purchased Services</u>				
580 Travel	101.95			101.95
<b>Total Other Purchased Services</b>	<b>\$101.95</b>			<b>\$101.95</b>
600 <u>Supplies</u>				
610 General Supplies	2,572.90			2,768.64
640 Books and Periodicals				113.74
<b>Total Supplies</b>	<b>\$2,572.90</b>			<b>\$2,882.38</b>
800 <u>Other Objects</u>				
810 Dues and Fees	210.00			210.00
<b>Total Other Objects</b>	<b>\$210.00</b>			<b>\$210.00</b>
<b>Total 2100 Support Services – Students</b>	<b>\$147,425.08</b>	<b>\$278,673.19</b>	<b>\$459.65</b>	<b>\$569,774.86</b>

LEA : 116496503      Shamokin Area SD

Printed 11/26/2019 7:09:24 PM

General Fund (10)

2120 Guidance Services

	<u>Elementary</u>	<u>Secondary</u>	<u>Federal</u>	<u>Total</u>
<b>100 <u>Personnel Services – Salaries</u></b>				
100 Personnel Services – Salaries	43,541.00	135,587.06		179,128.06
<b>Total Personnel Services – Salaries</b>	<b>\$43,541.00</b>	<b>\$135,587.06</b>		<b>\$179,128.06</b>
<b>200 <u>Personnel Services – Employee Benefits</u></b>				
210 Group Insurance – Contracted Provider	75.60	48,372.65		48,448.25
220 Social Security Contributions	3,331.71	9,870.08		13,201.79
230 PSERS Retirement Contributions	14,221.44	45,326.76		59,548.20
260 Workers' Compensation	391.94	1,220.33		1,612.27
270 Group Insurance – Self-Insurance		10,000.00		10,000.00
<b>Total Personnel Services – Employee Benefits</b>	<b>\$18,020.69</b>	<b>\$114,789.82</b>		<b>\$132,810.51</b>
<b>600 <u>Supplies</u></b>				
610 General Supplies	69.01			69.01
<b>Total Supplies</b>	<b>\$69.01</b>			<b>\$69.01</b>
<b>Total 2120 Guidance Services</b>	<b>\$61,630.70</b>	<b>\$250,376.88</b>		<b>\$312,007.58</b>

LEA : 116496503      Shamokin Area SD

Printed 11/26/2019 7:09:24 PM

General Fund (10)

2140 Psychological Services	Elementary	Secondary	Federal	Total
100 <u>Personnel Services – Salaries</u>				
100 Personnel Services – Salaries	42,549.60	14,670.66		57,220.26
<b>Total Personnel Services – Salaries</b>	<b>\$42,549.60</b>	<b>\$14,670.66</b>		<b>\$57,220.26</b>
200 <u>Personnel Services – Employee Benefits</u>				
210 Group Insurance – Contracted Provider	21,163.55	3,522.68		24,686.23
220 Social Security Contributions	3,158.22	1,078.86		4,237.08
230 PSERS Retirement Contributions	14,224.32	4,904.49		19,128.81
260 Workers' Compensation	382.85	132.02		514.87
<b>Total Personnel Services – Employee Benefits</b>	<b>\$38,928.94</b>	<b>\$9,638.05</b>		<b>\$48,566.99</b>
300 <u>Purchased Professional and Technical Services</u>				
329 Professional Educational Services – Other	1,500.00	3,987.60		5,487.60
<b>Total Purchased Professional and Technical Services</b>	<b>\$1,500.00</b>	<b>\$3,987.60</b>		<b>\$5,487.60</b>
500 <u>Other Purchased Services</u>				
580 Travel	101.95			101.95
<b>Total Other Purchased Services</b>	<b>\$101.95</b>			<b>\$101.95</b>
600 <u>Supplies</u>				
610 General Supplies	2,503.89			2,503.89
<b>Total Supplies</b>	<b>\$2,503.89</b>			<b>\$2,503.89</b>
800 <u>Other Objects</u>				
810 Dues and Fees	210.00			210.00
<b>Total Other Objects</b>	<b>\$210.00</b>			<b>\$210.00</b>
<b>Total 2140 Psychological Services</b>	<b>\$85,794.38</b>	<b>\$28,296.31</b>		<b>\$114,090.69</b>



LEA : 116496503      Shamokin Area SD

Printed 11/26/2019 7:09:24 PM

General Fund (10)				
2160 Social Work Services	<u>Elementary</u>	<u>Secondary</u>	<u>Federal</u>	<u>Total</u>
100 <u>Personnel Services – Salaries</u>				
100 Personnel Services – Salaries			323.75	87,675.70
Total Personnel Services – Salaries			\$323.75	\$87,675.70
200 <u>Personnel Services – Employee Benefits</u>				
210 Group Insurance – Contracted Provider				18,456.08
220 Social Security Contributions			24.76	6,607.85
230 PSERS Retirement Contributions			108.23	29,256.52
260 Workers' Compensation			2.91	788.96
Total Personnel Services – Employee Benefits			\$135.90	\$55,109.41
300 <u>Purchased Professional and Technical Services</u>				
322 Professional Educational Services – Ius				582.00
Total Purchased Professional and Technical Services				\$582.00
600 <u>Supplies</u>				
610 General Supplies				195.74
640 Books and Periodicals				113.74
Total Supplies				\$309.48
Total 2160 Social Work Services			\$459.65	\$143,676.59

LEA : 116496503      Shamokin Area SD

Printed 11/26/2019 7:09:24 PM

General Fund (10)

2200 Support Services – Instructional Staff	Elementary	Secondary	Federal	Total
<b>100 Personnel Services – Salaries</b>				
100 Personnel Services – Salaries	129,565.73	197,437.27	14,377.46	341,380.46
<b>Total Personnel Services – Salaries</b>	<b>\$129,565.73</b>	<b>\$197,437.27</b>	<b>\$14,377.46</b>	<b>\$341,380.46</b>
<b>200 Personnel Services – Employee Benefits</b>				
210 Group Insurance – Contracted Provider	32,763.71	62,551.16		95,314.87
220 Social Security Contributions	9,672.52	14,915.37	1,099.51	25,687.40
230 PSERS Retirement Contributions	40,102.14	61,780.88	4,806.30	106,689.32
240 Tuition Reimbursement	55,418.00	48,706.36		104,124.36
260 Workers' Compensation	1,149.06	1,774.10	129.38	3,052.54
270 Group Insurance – Self-Insurance		32,294.56		32,294.56
291 Other Retirement Plans		6,108.86		6,108.86
<b>Total Personnel Services – Employee Benefits</b>	<b>\$139,105.43</b>	<b>\$228,131.29</b>	<b>\$6,035.19</b>	<b>\$373,271.91</b>
<b>300 Purchased Professional and Technical Services</b>				
329 Professional Educational Services – Other	4,500.00	3,675.00		8,175.00
360 Employee Training and Development Services	1,880.00	18,185.00	16,934.00	36,999.00
<b>Total Purchased Professional and Technical Services</b>	<b>\$6,380.00</b>	<b>\$21,860.00</b>	<b>\$16,934.00</b>	<b>\$45,174.00</b>
<b>500 Other Purchased Services</b>				
530 Communications		472.54		472.54
580 Travel		1,224.40	358.05	1,582.45
<b>Total Other Purchased Services</b>		<b>\$1,696.94</b>	<b>\$358.05</b>	<b>\$2,054.99</b>
<b>600 Supplies</b>				
610 General Supplies		108.89	214.74	323.63
630 Food		494.60		494.60
640 Books and Periodicals	1,947.94	499.64		2,447.58
650 Supplies & Fees – Technology Related	957.50	1,022.50		1,980.00
<b>Total Supplies</b>	<b>\$2,905.44</b>	<b>\$2,125.63</b>	<b>\$214.74</b>	<b>\$5,245.81</b>
<b>800 Other Objects</b>				
810 Dues and Fees		653.00		653.00
<b>Total Other Objects</b>		<b>\$653.00</b>		<b>\$653.00</b>
<b>Total 2200 Support Services – Instructional Staff</b>	<b>\$277,956.60</b>	<b>\$451,904.13</b>	<b>\$37,919.44</b>	<b>\$767,780.17</b>

LEA : 116496503      Shamokin Area SD

Printed 11/26/2019 7:09:24 PM

General Fund (10)

2250 School Library Services	<u>Elementary</u>	<u>Secondary</u>	<u>Federal</u>	<u>Total</u>
<b>100 <u>Personnel Services – Salaries</u></b>				
100 Personnel Services – Salaries	9,712.24	1,811.81		11,524.05
<b>Total Personnel Services – Salaries</b>	<b>\$9,712.24</b>	<b>\$1,811.81</b>		<b>\$11,524.05</b>
<b>200 <u>Personnel Services – Employee Benefits</u></b>				
220 Social Security Contributions	742.94	138.60		881.54
230 PSERS Retirement Contributions	3,246.78	605.66		3,852.44
260 Workers’ Compensation	87.39	16.28		103.67
270 Group Insurance – Self-Insurance		10,000.00		10,000.00
<b>Total Personnel Services – Employee Benefits</b>	<b>\$4,077.11</b>	<b>\$10,760.54</b>		<b>\$14,837.65</b>
<b>600 <u>Supplies</u></b>				
640 Books and Periodicals	1,947.94	499.64		2,447.58
650 Supplies & Fees – Technology Related	957.50	1,022.50		1,980.00
<b>Total Supplies</b>	<b>\$2,905.44</b>	<b>\$1,522.14</b>		<b>\$4,427.58</b>
<b>Total 2250 School Library Services</b>	<b>\$16,694.79</b>	<b>\$14,094.49</b>		<b>\$30,789.28</b>

LEA : 116496503      Shamokin Area SD

Printed 11/26/2019 7:09:24 PM

<b>General Fund (10)</b>				
<b>2260 Instruction and Curriculum Development Services</b>	<b><u>Elementary</u></b>	<b><u>Secondary</u></b>	<b><u>Federal</u></b>	<b><u>Total</u></b>
<b>100 <u>Personnel Services – Salaries</u></b>				
100 Personnel Services – Salaries	117,963.49	195,292.96		313,256.45
<b>Total Personnel Services – Salaries</b>	<b>\$117,963.49</b>	<b>\$195,292.96</b>		<b>\$313,256.45</b>
<b>200 <u>Personnel Services – Employee Benefits</u></b>				
210 Group Insurance – Contracted Provider	32,763.71	62,551.16		95,314.87
220 Social Security Contributions	8,929.58	14,776.77		23,706.35
230 PSERS Retirement Contributions	36,855.36	61,175.22		98,030.58
260 Workers' Compensation	1,061.67	1,757.82		2,819.49
270 Group Insurance – Self-Insurance		22,294.56		22,294.56
291 Other Retirement Plans		6,108.86		6,108.86
<b>Total Personnel Services – Employee Benefits</b>	<b>\$79,610.32</b>	<b>\$168,664.39</b>		<b>\$248,274.71</b>
<b>500 <u>Other Purchased Services</u></b>				
580 Travel		324.28		324.28
<b>Total Other Purchased Services</b>		<b>\$324.28</b>		<b>\$324.28</b>
<b>600 <u>Supplies</u></b>				
630 Food		494.60		494.60
<b>Total Supplies</b>		<b>\$494.60</b>		<b>\$494.60</b>
<b>800 <u>Other Objects</u></b>				
810 Dues and Fees		653.00		653.00
<b>Total Other Objects</b>		<b>\$653.00</b>		<b>\$653.00</b>
<b>Total 2260 Instruction and Curriculum Development Services</b>	<b>\$197,573.81</b>	<b>\$365,429.23</b>		<b>\$563,003.04</b>

LEA : 116496503      Shamokin Area SD

Printed 11/26/2019 7:09:24 PM

General Fund (10)

2270 Instructional Staff Professional Development Services	Elementary	Secondary	Federal	Total
100 <u>Personnel Services – Salaries</u>				
100 Personnel Services – Salaries	1,890.00	332.50	14,377.46	16,599.96
<b>Total Personnel Services – Salaries</b>	<b>\$1,890.00</b>	<b>\$332.50</b>	<b>\$14,377.46</b>	<b>\$16,599.96</b>
200 <u>Personnel Services – Employee Benefits</u>				
220 Social Security Contributions			1,099.51	1,099.51
230 PSERS Retirement Contributions			4,806.30	4,806.30
240 Tuition Reimbursement	55,418.00	48,706.36		104,124.36
260 Workers' Compensation			129.38	129.38
<b>Total Personnel Services – Employee Benefits</b>	<b>\$55,418.00</b>	<b>\$48,706.36</b>	<b>\$6,035.19</b>	<b>\$110,159.55</b>
300 <u>Purchased Professional and Technical Services</u>				
329 Professional Educational Services – Other	4,500.00	3,675.00		8,175.00
360 Employee Training and Development Services	1,880.00	18,185.00	16,634.00	36,699.00
<b>Total Purchased Professional and Technical Services</b>	<b>\$6,380.00</b>	<b>\$21,860.00</b>	<b>\$16,634.00</b>	<b>\$44,874.00</b>
500 <u>Other Purchased Services</u>				
530 Communications		472.54		472.54
580 Travel		900.12	358.05	1,258.17
<b>Total Other Purchased Services</b>		<b>\$1,372.66</b>	<b>\$358.05</b>	<b>\$1,730.71</b>
600 <u>Supplies</u>				
610 General Supplies		108.89	214.74	323.63
<b>Total Supplies</b>		<b>\$108.89</b>	<b>\$214.74</b>	<b>\$323.63</b>
<b>Total 2270 Instructional Staff Professional Development Services</b>	<b>\$63,688.00</b>	<b>\$72,380.41</b>	<b>\$37,619.44</b>	<b>\$173,687.85</b>

LEA : 116496503     Shamokin Area SD

Printed 11/26/2019 7:09:24 PM

General Fund (10)

2280 Nonpublic Support Services

	<u>Elementary</u>	<u>Secondary</u>	<u>Federal</u>	<u>Total</u>
300 <u>Purchased Professional and Technical Services</u>				
360 Employee Training and Development Services			300.00	300.00
<b>Total Purchased Professional and Technical Services</b>			<b>\$300.00</b>	<b>\$300.00</b>
<b>Total 2280 Nonpublic Support Services</b>			<b>\$300.00</b>	<b>\$300.00</b>

LEA : 116496503      Shamokin Area SD

Printed 11/26/2019 7:09:24 PM

General Fund (10)

2300 Support Services – Administration	Elementary	Secondary	Federal	Total
100 <u>Personnel Services – Salaries</u>				
100 Personnel Services – Salaries	263,886.70	287,225.30		922,929.91
<b>Total Personnel Services – Salaries</b>	<b>\$263,886.70</b>	<b>\$287,225.30</b>		<b>\$922,929.91</b>
200 <u>Personnel Services – Employee Benefits</u>				
210 Group Insurance – Contracted Provider	92,879.61	125,283.68		283,132.59
220 Social Security Contributions	19,793.43	21,589.15		69,156.88
230 PSERS Retirement Contributions	85,992.59	91,512.28		274,209.15
260 Workers' Compensation	2,374.65	2,585.28		8,306.20
291 Other Retirement Plans	3,655.00	610.00		9,233.13
<b>Total Personnel Services – Employee Benefits</b>	<b>\$204,695.28</b>	<b>\$241,580.39</b>		<b>\$644,037.95</b>
300 <u>Purchased Professional and Technical Services</u>				
310 Official / Administrative Services				21,093.56
329 Professional Educational Services – Other				2,600.00
330 Other Professional Services				64,308.32
390 Other Purchased Professional and Technical Services				32,305.96
<b>Total Purchased Professional and Technical Services</b>				<b>\$120,307.84</b>
400 <u>Purchased Property Services</u>				
430 Repairs and Maintenance Services		902.00		902.00
440 Rentals	833.64			1,521.95
<b>Total Purchased Property Services</b>	<b>\$833.64</b>	<b>\$902.00</b>		<b>\$2,423.95</b>
500 <u>Other Purchased Services</u>				
520 Insurance – General		100.00		420.00
530 Communications		917.44		1,943.69
<b>Total Other Purchased Services</b>		<b>\$1,017.44</b>		<b>\$2,363.69</b>
600 <u>Supplies</u>				
610 General Supplies	2,343.20	1,287.94		9,849.05
630 Food				315.00
640 Books and Periodicals				1,579.88
<b>Total Supplies</b>	<b>\$2,343.20</b>	<b>\$1,287.94</b>		<b>\$11,743.93</b>
700 <u>Property</u>				
762 Capitalized Equipment - Replacement		4,986.00		4,986.00
<b>Total Property</b>		<b>\$4,986.00</b>		<b>\$4,986.00</b>
800 <u>Other Objects</u>				
810 Dues and Fees	1,844.00	1,249.00		11,015.34
890 Miscellaneous Expenditures				71.02
<b>Total Other Objects</b>	<b>\$1,844.00</b>	<b>\$1,249.00</b>		<b>\$11,086.36</b>
<b>Total 2300 Support Services – Administration</b>	<b>\$473,602.82</b>	<b>\$538,248.07</b>		<b>\$1,719,879.63</b>

LEA : 116496503      Shamokin Area SD

Printed 11/26/2019 7:09:24 PM

General Fund (10)				
2310 Board Services	<u>Elementary</u>	<u>Secondary</u>	<u>Federal</u>	<u>Total</u>
100 <u>Personnel Services – Salaries</u>				
100 Personnel Services – Salaries				5,400.20
Total Personnel Services – Salaries				\$5,400.20
200 <u>Personnel Services – Employee Benefits</u>				
220 Social Security Contributions				413.40
260 Workers’ Compensation				48.36
Total Personnel Services – Employee Benefits				\$461.76
500 <u>Other Purchased Services</u>				
520 Insurance – General				320.00
Total Other Purchased Services				\$320.00
600 <u>Supplies</u>				
630 Food				315.00
Total Supplies				\$315.00
800 <u>Other Objects</u>				
810 Dues and Fees				6,522.34
890 Miscellaneous Expenditures				71.02
Total Other Objects				\$6,593.36
Total 2310 Board Services				\$13,090.32



LEA : 116496503      Shamokin Area SD

Printed 11/26/2019 7:09:24 PM

<b>General Fund (10)</b>				
<b>2330 Tax Assessment and Collection Services</b>	<b><u>Elementary</u></b>	<b><u>Secondary</u></b>	<b><u>Federal</u></b>	<b><u>Total</u></b>
<b>100 <u>Personnel Services – Salaries</u></b>				
100 Personnel Services – Salaries				43,505.48
<b>Total Personnel Services – Salaries</b>				<b>\$43,505.48</b>
<b>200 <u>Personnel Services – Employee Benefits</u></b>				
220 Social Security Contributions				3,328.17
260 Workers’ Compensation				391.81
<b>Total Personnel Services – Employee Benefits</b>				<b>\$3,719.98</b>
<b>300 <u>Purchased Professional and Technical Services</u></b>				
310 Official / Administrative Services				21,093.56
330 Other Professional Services				19,470.75
390 Other Purchased Professional and Technical Services				32,305.96
<b>Total Purchased Professional and Technical Services</b>				<b>\$72,870.27</b>
<b>500 <u>Other Purchased Services</u></b>				
530 Communications				1,026.25
<b>Total Other Purchased Services</b>				<b>\$1,026.25</b>
<b>600 <u>Supplies</u></b>				
610 General Supplies				5,543.93
<b>Total Supplies</b>				<b>\$5,543.93</b>
<b>Total 2330 Tax Assessment and Collection Services</b>				<b>\$126,665.91</b>

LEA : 116496503     Shamokin Area SD

Printed 11/26/2019 7:09:24 PM

General Fund (10)

2350 Legal and Accounting Services	<u>Elementary</u>	<u>Secondary</u>	<u>Federal</u>	<u>Total</u>
300 <u>Purchased Professional and Technical Services</u>				
330 Other Professional Services				44,837.57
<b>Total Purchased Professional and Technical Services</b>				<b>\$44,837.57</b>
<b>Total 2350 Legal and Accounting Services</b>				<b>\$44,837.57</b>

LEA : 116496503      Shamokin Area SD

Printed 11/26/2019 7:09:24 PM

General Fund (10)				
2360 Office of the Superintendent / Executive Director Services	<u>Elementary</u>	<u>Secondary</u>	<u>Federal</u>	<u>Total</u>
100 <u>Personnel Services – Salaries</u>				
100 Personnel Services – Salaries				322,912.23
Total Personnel Services – Salaries				\$322,912.23
200 <u>Personnel Services – Employee Benefits</u>				
210 Group Insurance – Contracted Provider				64,969.30
220 Social Security Contributions				24,032.73
230 PSERS Retirement Contributions				96,704.28
260 Workers' Compensation				2,906.10
291 Other Retirement Plans				4,968.13
Total Personnel Services – Employee Benefits				\$193,580.54
400 <u>Purchased Property Services</u>				
440 Rentals				688.31
Total Purchased Property Services				\$688.31
500 <u>Other Purchased Services</u>				
530 Communications		503.91		503.91
Total Other Purchased Services		\$503.91		\$503.91
600 <u>Supplies</u>				
610 General Supplies				673.98
640 Books and Periodicals				216.88
Total Supplies				\$890.86
800 <u>Other Objects</u>				
810 Dues and Fees				1,400.00
Total Other Objects				\$1,400.00
Total 2360 Office of the Superintendent / Executive Director Services		\$503.91		\$519,975.85

LEA : 116496503      Shamokin Area SD

Printed 11/26/2019 7:09:24 PM

<b>General Fund (10)</b>				
<b>2380 Office of the Principal Services</b>	<b><u>Elementary</u></b>	<b><u>Secondary</u></b>	<b><u>Federal</u></b>	<b><u>Total</u></b>
<b>100 <u>Personnel Services – Salaries</u></b>				
100 Personnel Services – Salaries	263,886.70	287,225.30		551,112.00
<b>Total Personnel Services – Salaries</b>	<b>\$263,886.70</b>	<b>\$287,225.30</b>		<b>\$551,112.00</b>
<b>200 <u>Personnel Services – Employee Benefits</u></b>				
210 Group Insurance – Contracted Provider	92,879.61	125,283.68		218,163.29
220 Social Security Contributions	19,793.43	21,589.15		41,382.58
230 PSERS Retirement Contributions	85,992.59	91,512.28		177,504.87
260 Workers' Compensation	2,374.65	2,585.28		4,959.93
291 Other Retirement Plans	3,655.00	610.00		4,265.00
<b>Total Personnel Services – Employee Benefits</b>	<b>\$204,695.28</b>	<b>\$241,580.39</b>		<b>\$446,275.67</b>
<b>400 <u>Purchased Property Services</u></b>				
430 Repairs and Maintenance Services		902.00		902.00
440 Rentals	833.64			833.64
<b>Total Purchased Property Services</b>	<b>\$833.64</b>	<b>\$902.00</b>		<b>\$1,735.64</b>
<b>500 <u>Other Purchased Services</u></b>				
520 Insurance – General		100.00		100.00
530 Communications		413.53		413.53
<b>Total Other Purchased Services</b>		<b>\$513.53</b>		<b>\$513.53</b>
<b>600 <u>Supplies</u></b>				
610 General Supplies	2,343.20	1,287.94		3,631.14
<b>Total Supplies</b>	<b>\$2,343.20</b>	<b>\$1,287.94</b>		<b>\$3,631.14</b>
<b>700 <u>Property</u></b>				
762 Capitalized Equipment - Replacement		4,986.00		4,986.00
<b>Total Property</b>		<b>\$4,986.00</b>		<b>\$4,986.00</b>
<b>800 <u>Other Objects</u></b>				
810 Dues and Fees	1,844.00	1,249.00		3,093.00
<b>Total Other Objects</b>	<b>\$1,844.00</b>	<b>\$1,249.00</b>		<b>\$3,093.00</b>
<b>Total 2380 Office of the Principal Services</b>	<b>\$473,602.82</b>	<b>\$537,744.16</b>		<b>\$1,011,346.98</b>

LEA : 116496503      Shamokin Area SD

Printed 11/26/2019 7:09:24 PM

General Fund (10)				
2390 Other Administration Services	<u>Elementary</u>	<u>Secondary</u>	<u>Federal</u>	<u>Total</u>
300 <u>Purchased Professional and Technical Services</u>				
329 Professional Educational Services – Other				2,600.00
Total Purchased Professional and Technical Services				\$2,600.00
600 <u>Supplies</u>				
640 Books and Periodicals				1,363.00
Total Supplies				\$1,363.00
Total 2390 Other Administration Services				\$3,963.00

LEA : 116496503      Shamokin Area SD

Printed 11/26/2019 7:09:24 PM

General Fund (10)				
2400 Support Services – Pupil Health	<u>Elementary</u>	<u>Secondary</u>	<u>Federal</u>	<u>Total</u>
100 <u>Personnel Services – Salaries</u>				
100 Personnel Services – Salaries			33,704.05	306,541.07
Total Personnel Services – Salaries			\$33,704.05	\$306,541.07
200 <u>Personnel Services – Employee Benefits</u>				
210 Group Insurance – Contracted Provider			25,128.04	123,548.26
220 Social Security Contributions			2,500.98	22,825.00
230 PSERS Retirement Contributions			11,066.74	99,376.07
250 Unemployment Compensation				(210.98)
260 Workers' Compensation			303.29	2,758.98
Total Personnel Services – Employee Benefits			\$38,999.05	\$248,297.33
300 <u>Purchased Professional and Technical Services</u>				
330 Other Professional Services				25,363.42
Total Purchased Professional and Technical Services				\$25,363.42
400 <u>Purchased Property Services</u>				
430 Repairs and Maintenance Services				565.00
Total Purchased Property Services				\$565.00
500 <u>Other Purchased Services</u>				
530 Communications				413.53
580 Travel				8.39
Total Other Purchased Services				\$421.92
600 <u>Supplies</u>				
610 General Supplies				5,377.79
Total Supplies				\$5,377.79
700 <u>Property</u>				
752 Capital Equipment – Original and Additional				3,438.80
762 Capitalized Equipment - Replacement				3,777.92
Total Property				\$7,216.72
Total 2400 Support Services – Pupil Health			\$72,703.10	\$593,783.25

LEA : 116496503     Shamokin Area SD

Printed 11/26/2019 7:09:24 PM

General Fund (10)

2420 Medical Services

Elementary                      Secondary                      Federal                      Total

300 Purchased Professional and Technical Services

330 Other Professional Services 5,930.92

**Total Purchased Professional and Technical Services \$5,930.92**

600 Supplies

610 General Supplies 229.42

**Total Supplies \$229.42**

**Total 2420 Medical Services \$6,160.34**

LEA : 116496503     Shamokin Area SD

Printed 11/26/2019 7:09:24 PM

General Fund (10)

2430 Dental Services

<u>Elementary</u>	<u>Secondary</u>	<u>Federal</u>	<u>Total</u>
-------------------	------------------	----------------	--------------

300 Purchased Professional and Technical Services

330 Other Professional Services			472.50
---------------------------------	--	--	--------

<b>Total Purchased Professional and Technical Services</b>			<b>\$472.50</b>
--	--	--	-----------------

<b>Total 2430 Dental Services</b>			<b>\$472.50</b>
-----------------------------------	--	--	-----------------



LEA : 116496503     Shamokin Area SD

Printed 11/26/2019 7:09:24 PM

General Fund (10)

2440 Nursing Services

	<u>Elementary</u>	<u>Secondary</u>	<u>Federal</u>	<u>Total</u>
<b>100 <u>Personnel Services – Salaries</u></b>				
100 Personnel Services – Salaries			33,704.05	294,326.82
<b>Total Personnel Services – Salaries</b>			<b>\$33,704.05</b>	<b>\$294,326.82</b>
<b>200 <u>Personnel Services – Employee Benefits</u></b>				
210 Group Insurance – Contracted Provider			25,128.04	117,709.01
220 Social Security Contributions			2,500.98	21,918.54
230 PSERS Retirement Contributions			11,066.74	95,292.86
250 Unemployment Compensation				(210.98)
260 Workers' Compensation			303.29	2,649.03
<b>Total Personnel Services – Employee Benefits</b>			<b>\$38,999.05</b>	<b>\$237,358.46</b>
<b>400 <u>Purchased Property Services</u></b>				
430 Repairs and Maintenance Services				489.25
<b>Total Purchased Property Services</b>				<b>\$489.25</b>
<b>500 <u>Other Purchased Services</u></b>				
530 Communications				413.53
580 Travel				8.39
<b>Total Other Purchased Services</b>				<b>\$421.92</b>
<b>600 <u>Supplies</u></b>				
610 General Supplies				4,173.62
<b>Total Supplies</b>				<b>\$4,173.62</b>
<b>700 <u>Property</u></b>				
752 Capital Equipment – Original and Additional				3,438.80
762 Capitalized Equipment - Replacement				3,777.92
<b>Total Property</b>				<b>\$7,216.72</b>
<b>Total 2440 Nursing Services</b>			<b>\$72,703.10</b>	<b>\$543,986.79</b>

LEA : 116496503      Shamokin Area SD

Printed 11/26/2019 7:09:24 PM

<b>General Fund (10)</b>				
<b>2450 Nonpublic Health Services</b>	<b><u>Elementary</u></b>	<b><u>Secondary</u></b>	<b><u>Federal</u></b>	<b><u>Total</u></b>
<b>100 <u>Personnel Services – Salaries</u></b>				
100 Personnel Services – Salaries				12,214.25
<b>Total Personnel Services – Salaries</b>				<b>\$12,214.25</b>
<b>200 <u>Personnel Services – Employee Benefits</u></b>				
210 Group Insurance – Contracted Provider				5,839.25
220 Social Security Contributions				906.46
230 PSERS Retirement Contributions				4,083.21
260 Workers' Compensation				109.95
<b>Total Personnel Services – Employee Benefits</b>				<b>\$10,938.87</b>
<b>400 <u>Purchased Property Services</u></b>				
430 Repairs and Maintenance Services				75.75
<b>Total Purchased Property Services</b>				<b>\$75.75</b>
<b>600 <u>Supplies</u></b>				
610 General Supplies				974.75
<b>Total Supplies</b>				<b>\$974.75</b>
<b>Total 2450 Nonpublic Health Services</b>				<b>\$24,203.62</b>

LEA : 116496503     Shamokin Area SD

Printed 11/26/2019 7:09:24 PM

General Fund (10)

2490 Other Health Services

<u>Elementary</u>	<u>Secondary</u>	<u>Federal</u>	<u>Total</u>
-------------------	------------------	----------------	--------------

300 Purchased Professional and Technical Services

330 Other Professional Services			18,960.00
---------------------------------	--	--	-----------

<b>Total Purchased Professional and Technical Services</b>			<b>\$18,960.00</b>
--	--	--	--------------------

<b>Total 2490 Other Health Services</b>			<b>\$18,960.00</b>
---	--	--	--------------------

LEA : 116496503      Shamokin Area SD

Printed 11/26/2019 7:09:24 PM

<b>General Fund (10)</b>				
<b>2500 Support Services – Business</b>	<b><u>Elementary</u></b>	<b><u>Secondary</u></b>	<b><u>Federal</u></b>	<b><u>Total</u></b>
<b>100 <u>Personnel Services – Salaries</u></b>				
100 Personnel Services – Salaries			13,781.38	372,383.22
<b>Total Personnel Services – Salaries</b>			<b>\$13,781.38</b>	<b>\$372,383.22</b>
<b>200 <u>Personnel Services – Employee Benefits</u></b>				
210 Group Insurance – Contracted Provider			12,561.84	134,474.11
220 Social Security Contributions			1,031.12	28,231.63
230 PSERS Retirement Contributions			4,607.07	120,421.02
260 Workers' Compensation			124.09	3,351.57
270 Group Insurance – Self-Insurance				7,500.00
291 Other Retirement Plans				3,150.00
<b>Total Personnel Services – Employee Benefits</b>			<b>\$18,324.12</b>	<b>\$297,128.33</b>
<b>300 <u>Purchased Professional and Technical Services</u></b>				
322 Professional Educational Services – Ius				4,200.00
330 Other Professional Services				27,915.00
<b>Total Purchased Professional and Technical Services</b>				<b>\$32,115.00</b>
<b>400 <u>Purchased Property Services</u></b>				
430 Repairs and Maintenance Services				360.00
440 Rentals				25,898.05
<b>Total Purchased Property Services</b>				<b>\$26,258.05</b>
<b>500 <u>Other Purchased Services</u></b>				
530 Communications				12,076.64
549 Other Advertising/Public Relations				2,943.34
<b>Total Other Purchased Services</b>				<b>\$15,019.98</b>
<b>600 <u>Supplies</u></b>				
610 General Supplies				2,447.36
650 Supplies & Fees – Technology Related				22,459.20
<b>Total Supplies</b>				<b>\$24,906.56</b>
<b>800 <u>Other Objects</u></b>				
810 Dues and Fees				2,066.09
<b>Total Other Objects</b>				<b>\$2,066.09</b>
<b>Total 2500 Support Services – Business</b>			<b>\$32,105.50</b>	<b>\$769,877.23</b>

LEA : 116496503      Shamokin Area SD

Printed 11/26/2019 7:09:24 PM

<b>General Fund (10)</b>				
<b>2510 Fiscal Services</b>	<u><b>Elementary</b></u>	<u><b>Secondary</b></u>	<u><b>Federal</b></u>	<u><b>Total</b></u>
<b>100 <u>Personnel Services – Salaries</u></b>				
100 Personnel Services – Salaries			13,781.38	346,047.38
<b>Total Personnel Services – Salaries</b>			<b>\$13,781.38</b>	<b>\$346,047.38</b>
<b>200 <u>Personnel Services – Employee Benefits</u></b>				
210 Group Insurance – Contracted Provider			12,561.84	125,146.67
220 Social Security Contributions			1,031.12	26,238.25
230 PSERS Retirement Contributions			4,607.07	111,616.96
260 Workers' Compensation			124.09	3,114.53
270 Group Insurance – Self-Insurance				7,500.00
291 Other Retirement Plans				3,150.00
<b>Total Personnel Services – Employee Benefits</b>			<b>\$18,324.12</b>	<b>\$276,766.41</b>
<b>300 <u>Purchased Professional and Technical Services</u></b>				
330 Other Professional Services				27,915.00
<b>Total Purchased Professional and Technical Services</b>				<b>\$27,915.00</b>
<b>500 <u>Other Purchased Services</u></b>				
530 Communications				976.64
<b>Total Other Purchased Services</b>				<b>\$976.64</b>
<b>600 <u>Supplies</u></b>				
610 General Supplies				377.94
650 Supplies & Fees – Technology Related				22,459.20
<b>Total Supplies</b>				<b>\$22,837.14</b>
<b>800 <u>Other Objects</u></b>				
810 Dues and Fees				2,066.09
<b>Total Other Objects</b>				<b>\$2,066.09</b>
<b>Total 2510 Fiscal Services</b>			<b>\$32,105.50</b>	<b>\$676,608.66</b>

LEA : 116496503      Shamokin Area SD

Printed 11/26/2019 7:09:24 PM

General Fund (10)

2511 Supervision of Fiscal Services - Head of Component

	<u>Elementary</u>	<u>Secondary</u>	<u>Federal</u>	<u>Total</u>
<b>100 <u>Personnel Services – Salaries</u></b>				
100 Personnel Services – Salaries				169,596.24
<b>Total Personnel Services – Salaries</b>				<b>\$169,596.24</b>
<b>200 <u>Personnel Services – Employee Benefits</u></b>				
210 Group Insurance – Contracted Provider			(159.00)	41,669.01
220 Social Security Contributions				12,953.26
230 PSERS Retirement Contributions				54,819.03
260 Workers' Compensation				1,526.31
291 Other Retirement Plans				3,150.00
<b>Total Personnel Services – Employee Benefits</b>			<b>(\$159.00)</b>	<b>\$114,117.61</b>
<b>600 <u>Supplies</u></b>				
650 Supplies & Fees – Technology Related				11,866.95
<b>Total Supplies</b>				<b>\$11,866.95</b>
<b>800 <u>Other Objects</u></b>				
810 Dues and Fees				715.00
<b>Total Other Objects</b>				<b>\$715.00</b>
<b>Total 2511 Supervision of Fiscal Services - Head of Component</b>			<b>(\$159.00)</b>	<b>\$296,295.80</b>

LEA : 116496503      Shamokin Area SD

Printed 11/26/2019 7:09:24 PM

General Fund (10)

2513 Receiving and Disbursing Funds Services	<u>Elementary</u>	<u>Secondary</u>	<u>Federal</u>	<u>Total</u>
100 <u>Personnel Services – Salaries</u>				
100 Personnel Services – Salaries				80,079.28
<b>Total Personnel Services – Salaries</b>				<b>\$80,079.28</b>
200 <u>Personnel Services – Employee Benefits</u>				
210 Group Insurance – Contracted Provider				25,822.74
220 Social Security Contributions				6,061.85
230 PSERS Retirement Contributions				25,228.37
260 Workers' Compensation				720.84
270 Group Insurance – Self-Insurance				7,500.00
<b>Total Personnel Services – Employee Benefits</b>				<b>\$65,333.80</b>
<b>Total 2513 Receiving and Disbursing Funds Services</b>				<b>\$145,413.08</b>

LEA : 116496503      Shamokin Area SD

Printed 11/26/2019 7:09:24 PM

General Fund (10)

2514 Payroll Services

Elementary                      Secondary                      Federal                      Total

100 <u>Personnel Services – Salaries</u>				
100 Personnel Services – Salaries				51,917.50
Total Personnel Services – Salaries				\$51,917.50
200 <u>Personnel Services – Employee Benefits</u>				
210 Group Insurance – Contracted Provider				19,806.04
220 Social Security Contributions				3,910.91
230 PSERS Retirement Contributions				16,708.44
260 Workers' Compensation				467.29
Total Personnel Services – Employee Benefits				\$40,892.68
600 <u>Supplies</u>				
650 Supplies & Fees – Technology Related				10,592.25
Total Supplies				\$10,592.25
Total 2514 Payroll Services				\$103,402.43



LEA : 116496503      Shamokin Area SD

Printed 11/26/2019 7:09:24 PM

General Fund (10)

2515 Financial Accounting Services	<u>Elementary</u>	<u>Secondary</u>	<u>Federal</u>	<u>Total</u>
100 <u>Personnel Services – Salaries</u>				
100 Personnel Services – Salaries			13,781.38	44,454.36
<b>Total Personnel Services – Salaries</b>			<b>\$13,781.38</b>	<b>\$44,454.36</b>
200 <u>Personnel Services – Employee Benefits</u>				
210 Group Insurance – Contracted Provider			12,720.84	37,848.88
220 Social Security Contributions			1,031.12	3,312.23
230 PSERS Retirement Contributions			4,607.07	14,861.12
260 Workers' Compensation			124.09	400.09
<b>Total Personnel Services – Employee Benefits</b>			<b>\$18,483.12</b>	<b>\$56,422.32</b>
<b>Total 2515 Financial Accounting Services</b>			<b>\$32,264.50</b>	<b>\$100,876.68</b>

LEA : 116496503     Shamokin Area SD

Printed 11/26/2019 7:09:24 PM

General Fund (10)

2516 Internal Auditing Services

<u>Elementary</u>	<u>Secondary</u>	<u>Federal</u>	<u>Total</u>
-------------------	------------------	----------------	--------------

300 Purchased Professional and Technical Services

330 Other Professional Services				20,500.00
---------------------------------	--	--	--	-----------

<b>Total Purchased Professional and Technical Services</b>				<b>\$20,500.00</b>
--	--	--	--	--------------------

<b>Total 2516 Internal Auditing Services</b>				<b>\$20,500.00</b>
--	--	--	--	--------------------

LEA : 116496503     Shamokin Area SD

Printed 11/26/2019 7:09:24 PM

General Fund (10)

2517 Property Accounting Services	<u>Elementary</u>	<u>Secondary</u>	<u>Federal</u>	<u>Total</u>
300 <u>Purchased Professional and Technical Services</u>				
330 Other Professional Services				1,015.00
<b>Total Purchased Professional and Technical Services</b>				<b>\$1,015.00</b>
<b>Total 2517 Property Accounting Services</b>				<b>\$1,015.00</b>

LEA : 116496503      Shamokin Area SD

Printed 11/26/2019 7:09:24 PM

General Fund (10)				
2519 Other Fiscal Services	<u>Elementary</u>	<u>Secondary</u>	<u>Federal</u>	<u>Total</u>
300 <u>Purchased Professional and Technical Services</u>				
330 Other Professional Services				6,400.00
Total Purchased Professional and Technical Services				\$6,400.00
500 <u>Other Purchased Services</u>				
530 Communications				976.64
Total Other Purchased Services				\$976.64
600 <u>Supplies</u>				
610 General Supplies				377.94
Total Supplies				\$377.94
800 <u>Other Objects</u>				
810 Dues and Fees				1,351.09
Total Other Objects				\$1,351.09
Total 2519 Other Fiscal Services				\$9,105.67

LEA : 116496503      Shamokin Area SD

Printed 11/26/2019 7:09:24 PM

General Fund (10)

2520 Purchasing Services

Elementary                      Secondary                      Federal                      Total

400 <u>Purchased Property Services</u>				
430 Repairs and Maintenance Services				360.00
440 Rentals				5,361.94
<b>Total Purchased Property Services</b>				<b>\$5,721.94</b>
500 <u>Other Purchased Services</u>				
530 Communications				11,100.00
<b>Total Other Purchased Services</b>				<b>\$11,100.00</b>
600 <u>Supplies</u>				
610 General Supplies				1,710.14
<b>Total Supplies</b>				<b>\$1,710.14</b>
<b>Total 2520 Purchasing Services</b>				<b>\$18,532.08</b>

LEA : 116496503      Shamokin Area SD

Printed 11/26/2019 7:09:24 PM

General Fund (10)

2530 Warehousing and Distributing Services	<u>Elementary</u>	<u>Secondary</u>	<u>Federal</u>	<u>Total</u>
100 <u>Personnel Services – Salaries</u>				
100 Personnel Services – Salaries				26,335.84
Total Personnel Services – Salaries				\$26,335.84
200 <u>Personnel Services – Employee Benefits</u>				
210 Group Insurance – Contracted Provider				9,327.44
220 Social Security Contributions				1,993.38
230 PSERS Retirement Contributions				8,804.06
260 Workers' Compensation				237.04
Total Personnel Services – Employee Benefits				\$20,361.92
Total 2530 Warehousing and Distributing Services				\$46,697.76

LEA : 116496503      Shamokin Area SD

Printed 11/26/2019 7:09:24 PM

General Fund (10)

2540 Printing, Publishing and Duplicating Services	<u>Elementary</u>	<u>Secondary</u>	<u>Federal</u>	<u>Total</u>
400 <u>Purchased Property Services</u>				
440 Rentals				20,536.11
Total Purchased Property Services				\$20,536.11
600 <u>Supplies</u>				
610 General Supplies				359.28
Total Supplies				\$359.28
Total 2540 Printing, Publishing and Duplicating Services				\$20,895.39

LEA : 116496503     Shamokin Area SD

Printed 11/26/2019 7:09:24 PM

General Fund (10)

2590 Other Support Services – Business	<u>Elementary</u>	<u>Secondary</u>	<u>Federal</u>	<u>Total</u>
300 <u>Purchased Professional and Technical Services</u>				
322 Professional Educational Services – lus				4,200.00
Total Purchased Professional and Technical Services				\$4,200.00
500 <u>Other Purchased Services</u>				
549 Other Advertising/Public Relations				2,943.34
Total Other Purchased Services				\$2,943.34
Total 2590 Other Support Services – Business				\$7,143.34



LEA : 116496503      Shamokin Area SD

Printed 11/26/2019 7:09:24 PM

General Fund (10)				
2600 Operation and Maintenance of Plant Services				
	<u>Elementary</u>	<u>Secondary</u>	<u>Federal</u>	<u>Total</u>
100 <u>Personnel Services – Salaries</u>				
100 Personnel Services – Salaries				1,089,302.10
Total Personnel Services – Salaries				\$1,089,302.10
200 <u>Personnel Services – Employee Benefits</u>				
210 Group Insurance – Contracted Provider				362,630.13
220 Social Security Contributions				83,740.85
230 PSERS Retirement Contributions				347,224.75
250 Unemployment Compensation				(363.56)
260 Workers' Compensation				9,899.22
270 Group Insurance – Self-Insurance				7,000.00
291 Other Retirement Plans				2,339.42
Total Personnel Services – Employee Benefits				\$812,470.81
300 <u>Purchased Professional and Technical Services</u>				
330 Other Professional Services				1,471.76
Total Purchased Professional and Technical Services				\$1,471.76
400 <u>Purchased Property Services</u>				
410 Cleaning Services				41,596.08
420 Utility Services				104,413.85
430 Repairs and Maintenance Services				57,928.44
440 Rentals				205.00
450 Construction Services				23,065.06
490 Other Purchased Property Services				8,227.25
Total Purchased Property Services				\$235,435.68
500 <u>Other Purchased Services</u>				
522 Automotive Liability Insurance				21,125.00
523 General Property and Liability Insurance				101,412.00
529 Other Insurance				11,998.45
530 Communications				23,602.71
Total Other Purchased Services				\$158,138.16
600 <u>Supplies</u>				
610 General Supplies	64,069.96	105,536.04		169,606.00
620 Energy			(17.54)	229,519.89
640 Books and Periodicals				272.10
650 Supplies & Fees – Technology Related				1,275.00
Total Supplies				\$64,069.96      \$105,536.04      (\$17.54)      \$400,672.99
700 <u>Property</u>				
752 Capital Equipment – Original and Additional				31,470.07
762 Capitalized Equipment - Replacement				4,073.00
Total Property				\$35,543.07
800 <u>Other Objects</u>				
810 Dues and Fees				245.55

LEA : 116496503      Shamokin Area SD

Printed 11/26/2019 7:09:24 PM

General Fund (10)

2600 Operation and Maintenance of Plant Services	<u>Elementary</u>	<u>Secondary</u>	<u>Federal</u>	<u>Total</u>
Total Other Objects				\$245.55
Total 2600 Operation and Maintenance of Plant Services	\$64,069.96	\$105,536.04	(\$17.54)	\$2,733,280.12

LEA : 116496503      Shamokin Area SD

Printed 11/26/2019 7:09:24 PM

General Fund (10)

2610 Supervision of Operation and Maintenance of Plant Services	<u>Elementary</u>	<u>Secondary</u>	<u>Federal</u>	<u>Total</u>
100 <u>Personnel Services – Salaries</u>				
100 Personnel Services – Salaries				84,539.40
Total Personnel Services – Salaries				\$84,539.40
200 <u>Personnel Services – Employee Benefits</u>				
210 Group Insurance – Contracted Provider				26,546.88
220 Social Security Contributions				6,402.95
230 PSERS Retirement Contributions				26,068.92
260 Workers' Compensation				760.77
291 Other Retirement Plans				2,339.42
Total Personnel Services – Employee Benefits				\$62,118.94
500 <u>Other Purchased Services</u>				
530 Communications				552.55
Total Other Purchased Services				\$552.55
800 <u>Other Objects</u>				
810 Dues and Fees				210.55
Total Other Objects				\$210.55
Total 2610 Supervision of Operation and Maintenance of Plant Services				\$147,421.44

LEA : 116496503     Shamokin Area SD

Printed 11/26/2019 7:09:24 PM

General Fund (10)

2611 Supervision of Operation and Maintenance of Plant Services – Head of Component	<u>Elementary</u>	<u>Secondary</u>	<u>Federal</u>	<u>Total</u>
100 <u>Personnel Services – Salaries</u>				
100 Personnel Services – Salaries				84,539.40
Total Personnel Services – Salaries				\$84,539.40
200 <u>Personnel Services – Employee Benefits</u>				
210 Group Insurance – Contracted Provider				26,546.88
220 Social Security Contributions				6,402.95
230 PSERS Retirement Contributions				26,068.92
260 Workers' Compensation				760.77
291 Other Retirement Plans				2,339.42
Total Personnel Services – Employee Benefits				\$62,118.94
500 <u>Other Purchased Services</u>				
530 Communications				552.55
Total Other Purchased Services				\$552.55
800 <u>Other Objects</u>				
810 Dues and Fees				210.55
Total Other Objects				\$210.55
Total 2611 Supervision of Operation and Maintenance of Plant Services – Head of Component				\$147,421.44

LEA : 116496503      Shamokin Area SD

Printed 11/26/2019 7:09:24 PM

General Fund (10)				
2620 Operation of Buildings Services	<u>Elementary</u>	<u>Secondary</u>	<u>Federal</u>	<u>Total</u>
100 <u>Personnel Services – Salaries</u>				
100 Personnel Services – Salaries				730,320.32
Total Personnel Services – Salaries				\$730,320.32
200 <u>Personnel Services – Employee Benefits</u>				
210 Group Insurance – Contracted Provider				296,941.99
220 Social Security Contributions				56,420.87
230 PSERS Retirement Contributions				235,428.10
250 Unemployment Compensation				(366.73)
260 Workers' Compensation				6,668.38
270 Group Insurance – Self-Insurance				7,000.00
Total Personnel Services – Employee Benefits				\$602,092.61
300 <u>Purchased Professional and Technical Services</u>				
330 Other Professional Services				1,321.76
Total Purchased Professional and Technical Services				\$1,321.76
400 <u>Purchased Property Services</u>				
410 Cleaning Services				35,316.08
420 Utility Services				104,413.85
430 Repairs and Maintenance Services				46,179.64
440 Rentals				170.00
490 Other Purchased Property Services				8,227.25
Total Purchased Property Services				\$194,306.82
500 <u>Other Purchased Services</u>				
523 General Property and Liability Insurance				101,412.00
529 Other Insurance				11,998.45
530 Communications				16,872.60
Total Other Purchased Services				\$130,283.05
600 <u>Supplies</u>				
610 General Supplies	63,368.37	68,564.95		131,933.32
620 Energy			(17.54)	212,421.38
640 Books and Periodicals				272.10
Total Supplies	\$63,368.37	\$68,564.95	(\$17.54)	\$344,626.80
700 <u>Property</u>				
752 Capital Equipment – Original and Additional				2,503.00
762 Capitalized Equipment - Replacement				4,073.00
Total Property				\$6,576.00
800 <u>Other Objects</u>				
810 Dues and Fees				35.00
Total Other Objects				\$35.00
Total 2620 Operation of Buildings Services	\$63,368.37	\$68,564.95	(\$17.54)	\$2,009,562.36

LEA : 116496503      Shamokin Area SD

Printed 11/26/2019 7:09:24 PM

General Fund (10)				
2630 Care and Upkeep of Grounds Services	<u>Elementary</u>	<u>Secondary</u>	<u>Federal</u>	<u>Total</u>
100 <u>Personnel Services – Salaries</u>				
100 Personnel Services – Salaries				73,722.99
Total Personnel Services – Salaries				\$73,722.99
200 <u>Personnel Services – Employee Benefits</u>				
210 Group Insurance – Contracted Provider				38,996.36
220 Social Security Contributions				5,561.91
230 PSERS Retirement Contributions				23,656.01
260 Workers' Compensation				663.48
Total Personnel Services – Employee Benefits				\$68,877.76
300 <u>Purchased Professional and Technical Services</u>				
330 Other Professional Services				150.00
Total Purchased Professional and Technical Services				\$150.00
400 <u>Purchased Property Services</u>				
410 Cleaning Services				6,280.00
430 Repairs and Maintenance Services				2,012.89
440 Rentals				35.00
450 Construction Services				23,065.06
Total Purchased Property Services				\$31,392.95
500 <u>Other Purchased Services</u>				
530 Communications				413.53
Total Other Purchased Services				\$413.53
600 <u>Supplies</u>				
610 General Supplies	207.49	29,147.91		29,355.40
620 Energy				1,564.22
Total Supplies				\$30,919.62
700 <u>Property</u>				
752 Capital Equipment – Original and Additional				4,150.00
Total Property				\$4,150.00
Total 2630 Care and Upkeep of Grounds Services	\$207.49	\$29,147.91		\$209,626.85

LEA : 116496503     Shamokin Area SD

Printed 11/26/2019 7:09:24 PM

General Fund (10)

2640 Care and Upkeep of Equipment Services	<u>Elementary</u>	<u>Secondary</u>	<u>Federal</u>	<u>Total</u>
400 <u>Purchased Property Services</u>				
430 Repairs and Maintenance Services				101.87
Total Purchased Property Services				\$101.87
600 <u>Supplies</u>				
610 General Supplies	2.49	903.00		905.49
Total Supplies	\$2.49	\$903.00		\$905.49
Total 2640 Care and Upkeep of Equipment Services	\$2.49	\$903.00		\$1,007.36

LEA : 116496503      Shamokin Area SD

Printed 11/26/2019 7:09:24 PM

General Fund (10)				
2650 Vehicle Operation and Maintenance Services (Other Than Student Transportation Vehicles)	<u>Elementary</u>	<u>Secondary</u>	<u>Federal</u>	<u>Total</u>
400 <u>Purchased Property Services</u>				
430 Repairs and Maintenance Services				9,634.04
Total Purchased Property Services				\$9,634.04
500 <u>Other Purchased Services</u>				
522 Automotive Liability Insurance				21,125.00
Total Other Purchased Services				\$21,125.00
600 <u>Supplies</u>				
610 General Supplies		5,994.88		5,994.88
620 Energy				15,534.29
Total Supplies		\$5,994.88		\$21,529.17
700 <u>Property</u>				
752 Capital Equipment – Original and Additional				20,995.07
Total Property				\$20,995.07
Total 2650 Vehicle Operation and Maintenance Services (Other Than Student Transportation Vehicles)		\$5,994.88		\$73,283.28



LEA : 116496503      Shamokin Area SD

Printed 11/26/2019 7:09:24 PM

General Fund (10)				
2660 Safety and Security Services	<u>Elementary</u>	<u>Secondary</u>	<u>Federal</u>	<u>Total</u>
100 <u>Personnel Services – Salaries</u>				
100 Personnel Services – Salaries				200,719.39
Total Personnel Services – Salaries				\$200,719.39
200 <u>Personnel Services – Employee Benefits</u>				
210 Group Insurance – Contracted Provider				144.90
220 Social Security Contributions				15,355.12
230 PSERS Retirement Contributions				62,071.72
250 Unemployment Compensation				3.17
260 Workers' Compensation				1,806.59
Total Personnel Services – Employee Benefits				\$79,381.50
500 <u>Other Purchased Services</u>				
530 Communications				5,764.03
Total Other Purchased Services				\$5,764.03
600 <u>Supplies</u>				
610 General Supplies	491.61	925.30		1,416.91
650 Supplies & Fees – Technology Related				1,275.00
Total Supplies	\$491.61	\$925.30		\$2,691.91
700 <u>Property</u>				
752 Capital Equipment – Original and Additional				3,822.00
Total Property				\$3,822.00
Total 2660 Safety and Security Services	\$491.61	\$925.30		\$292,378.83

LEA : 116496503      Shamokin Area SD

Printed 11/26/2019 7:09:24 PM

General Fund (10)				
2700 Student Transportation Services	<u>Elementary</u>	<u>Secondary</u>	<u>Federal</u>	<u>Total</u>
300 <u>Purchased Professional and Technical Services</u>				
330 Other Professional Services				20.00
390 Other Purchased Professional and Technical Services				1,147.34
Total Purchased Professional and Technical Services				\$1,167.34
500 <u>Other Purchased Services</u>				
513 Contracted Carriers				1,217,630.06
516 Student Transportation Services From the IU				53,571.49
Total Other Purchased Services				\$1,271,201.55
Total 2700 Student Transportation Services				\$1,272,368.89

LEA : 116496503      Shamokin Area SD

Printed 11/26/2019 7:09:24 PM

General Fund (10)

2720 Vehicle Operation Services	<u>Elementary</u>	<u>Secondary</u>	<u>Federal</u>	<u>Total</u>
300 <u>Purchased Professional and Technical Services</u>				
330 Other Professional Services				20.00
390 Other Purchased Professional and Technical Services				1,147.34
Total Purchased Professional and Technical Services				\$1,167.34
500 <u>Other Purchased Services</u>				
513 Contracted Carriers				1,059,338.15
516 Student Transportation Services From the IU				53,571.49
Total Other Purchased Services				\$1,112,909.64
Total 2720 Vehicle Operation Services				\$1,114,076.98

LEA : 116496503     Shamokin Area SD

Printed 11/26/2019 7:09:24 PM

General Fund (10)

2750 Nonpublic Transportation	<u>Elementary</u>	<u>Secondary</u>	<u>Federal</u>	<u>Total</u>
500 <u>Other Purchased Services</u>				
513 Contracted Carriers				158,291.91
Total Other Purchased Services				\$158,291.91
Total 2750 Nonpublic Transportation				\$158,291.91

LEA : 116496503      Shamokin Area SD

Printed 11/26/2019 7:09:24 PM

<b>General Fund (10)</b>				
<b>2800 Support Services – Central</b>	<b><u>Elementary</u></b>	<b><u>Secondary</u></b>	<b><u>Federal</u></b>	<b><u>Total</u></b>
<b>100 <u>Personnel Services – Salaries</u></b>				
100 Personnel Services – Salaries			11,215.09	145,582.27
<b>Total Personnel Services – Salaries</b>			<b>\$11,215.09</b>	<b>\$145,582.27</b>
<b>200 <u>Personnel Services – Employee Benefits</u></b>				
210 Group Insurance – Contracted Provider			2,789.64	54,440.20
220 Social Security Contributions			861.40	10,993.11
230 PSERS Retirement Contributions			3,506.36	45,598.82
260 Workers' Compensation			100.92	1,310.41
270 Group Insurance – Self-Insurance				19,342.56
291 Other Retirement Plans				617.24
<b>Total Personnel Services – Employee Benefits</b>			<b>\$7,258.32</b>	<b>\$132,302.34</b>
<b>300 <u>Purchased Professional and Technical Services</u></b>				
360 Employee Training and Development Services			1,039.97	6,815.97
390 Other Purchased Professional and Technical Services				333.75
<b>Total Purchased Professional and Technical Services</b>			<b>\$1,039.97</b>	<b>\$7,149.72</b>
<b>400 <u>Purchased Property Services</u></b>				
430 Repairs and Maintenance Services				8,094.87
440 Rentals				13,980.30
<b>Total Purchased Property Services</b>				<b>\$22,075.17</b>
<b>500 <u>Other Purchased Services</u></b>				
530 Communications				484.16
580 Travel				1,550.08
<b>Total Other Purchased Services</b>				<b>\$2,034.24</b>
<b>600 <u>Supplies</u></b>				
610 General Supplies				108,165.88
650 Supplies & Fees – Technology Related				80,352.15
<b>Total Supplies</b>				<b>\$188,518.03</b>
<b>700 <u>Property</u></b>				
756 Capitalized Technology Equipment – Original				186,650.57
766 Capitalized Technology Equipment – Replacement				2,660.00
<b>Total Property</b>				<b>\$189,310.57</b>
<b>800 <u>Other Objects</u></b>				
810 Dues and Fees				119.00
<b>Total Other Objects</b>				<b>\$119.00</b>
<b>Total 2800 Support Services – Central</b>			<b>\$19,513.38</b>	<b>\$687,091.34</b>

LEA : 116496503      Shamokin Area SD

Printed 11/26/2019 7:09:24 PM

General Fund (10)				
2810 Planning, Research, Development and Evaluation Services	<u>Elementary</u>	<u>Secondary</u>	<u>Federal</u>	<u>Total</u>
100 <u>Personnel Services – Salaries</u>				
100 Personnel Services – Salaries				134,367.18
Total Personnel Services – Salaries				\$134,367.18
200 <u>Personnel Services – Employee Benefits</u>				
210 Group Insurance – Contracted Provider				51,650.56
220 Social Security Contributions				10,131.71
230 PSERS Retirement Contributions				42,092.46
260 Workers' Compensation				1,209.49
270 Group Insurance – Self-Insurance				19,342.56
291 Other Retirement Plans				617.24
Total Personnel Services – Employee Benefits				\$125,044.02
300 <u>Purchased Professional and Technical Services</u>				
390 Other Purchased Professional and Technical Services				333.75
Total Purchased Professional and Technical Services				\$333.75
400 <u>Purchased Property Services</u>				
430 Repairs and Maintenance Services				8,094.87
440 Rentals				13,980.30
Total Purchased Property Services				\$22,075.17
500 <u>Other Purchased Services</u>				
530 Communications				484.16
Total Other Purchased Services				\$484.16
600 <u>Supplies</u>				
610 General Supplies				108,165.88
650 Supplies & Fees – Technology Related				80,352.15
Total Supplies				\$188,518.03
700 <u>Property</u>				
756 Capitalized Technology Equipment – Original				186,650.57
766 Capitalized Technology Equipment – Replacement				2,660.00
Total Property				\$189,310.57
800 <u>Other Objects</u>				
810 Dues and Fees				119.00
Total Other Objects				\$119.00
Total 2810 Planning, Research, Development and Evaluation Services				\$660,251.88

LEA : 116496503     Shamokin Area SD

Printed 11/26/2019 7:09:24 PM

General Fund (10)

2830 Staff Services

<u>Elementary</u>	<u>Secondary</u>	<u>Federal</u>	<u>Total</u>
-------------------	------------------	----------------	--------------

300 Purchased Professional and Technical Services

360 Employee Training and Development Services		1,039.97	6,815.97
--	--	----------	----------

<b>Total Purchased Professional and Technical Services</b>		<b>\$1,039.97</b>	<b>\$6,815.97</b>
--	--	-------------------	-------------------

500 Other Purchased Services

580 Travel			1,550.08
------------	--	--	----------

<b>Total Other Purchased Services</b>			<b>\$1,550.08</b>
---------------------------------------	--	--	-------------------

<b>Total 2830 Staff Services</b>		<b>\$1,039.97</b>	<b>\$8,366.05</b>
----------------------------------	--	-------------------	-------------------

LEA : 116496503     Shamokin Area SD

Printed 11/26/2019 7:09:24 PM

General Fund (10)

2834 Staff Development Services – Non-Instructional, Certified Staff Only	<u>Elementary</u>	<u>Secondary</u>	<u>Federal</u>	<u>Total</u>
300 <u>Purchased Professional and Technical Services</u>				
360 Employee Training and Development Services			100.00	4,081.00
Total Purchased Professional and Technical Services			\$100.00	\$4,081.00
500 <u>Other Purchased Services</u>				
580 Travel				1,550.08
Total Other Purchased Services				\$1,550.08
Total 2834 Staff Development Services – Non-Instructional, Certified Staff Only			\$100.00	\$5,631.08



LEA : 116496503     Shamokin Area SD

Printed 11/26/2019 7:09:24 PM

General Fund (10)

2836 Staff Development Services – Non-Instructional, Non-Certified Staff Only	<u>Elementary</u>	<u>Secondary</u>	<u>Federal</u>	<u>Total</u>
300 <u>Purchased Professional and Technical Services</u>				
360 Employee Training and Development Services			939.97	2,734.97
Total Purchased Professional and Technical Services			\$939.97	\$2,734.97
Total 2836 Staff Development Services – Non-Instructional, Non-Certified Staff Only			\$939.97	\$2,734.97

LEA : 116496503      Shamokin Area SD

Printed 11/26/2019 7:09:24 PM

General Fund (10)

2850 State and Federal Agency Liaison Services	<u>Elementary</u>	<u>Secondary</u>	<u>Federal</u>	<u>Total</u>
100 <u>Personnel Services – Salaries</u>				
100 Personnel Services – Salaries			11,215.09	11,215.09
<b>Total Personnel Services – Salaries</b>			<b>\$11,215.09</b>	<b>\$11,215.09</b>
200 <u>Personnel Services – Employee Benefits</u>				
210 Group Insurance – Contracted Provider			2,789.64	2,789.64
220 Social Security Contributions			861.40	861.40
230 PSERS Retirement Contributions			3,506.36	3,506.36
260 Workers' Compensation			100.92	100.92
<b>Total Personnel Services – Employee Benefits</b>			<b>\$7,258.32</b>	<b>\$7,258.32</b>
<b>Total 2850 State and Federal Agency Liaison Services</b>			<b>\$18,473.41</b>	<b>\$18,473.41</b>

LEA : 116496503      Shamokin Area SD

Printed 11/26/2019 7:09:30 PM

<b>General Fund (10)</b>	
<b>3000 Operation of Non-Instructional Services</b>	<b><u>Total</u></b>
<b>100 <u>Personnel Services – Salaries</u></b>	
100 Personnel Services – Salaries	271,177.27
<b>Total Personnel Services – Salaries</b>	<b>\$271,177.27</b>
<b>200 <u>Personnel Services – Employee Benefits</u></b>	
210 Group Insurance – Contracted Provider	27,274.72
220 Social Security Contributions	20,653.29
230 PSERS Retirement Contributions	53,004.36
250 Unemployment Compensation	234.57
260 Workers' Compensation	2,440.98
<b>Total Personnel Services – Employee Benefits</b>	<b>\$103,607.92</b>
<b>300 <u>Purchased Professional and Technical Services</u></b>	
330 Other Professional Services	38,212.85
390 Other Purchased Professional and Technical Services	35,000.00
<b>Total Purchased Professional and Technical Services</b>	<b>\$73,212.85</b>
<b>400 <u>Purchased Property Services</u></b>	
410 Cleaning Services	1,873.00
430 Repairs and Maintenance Services	13,618.98
440 Rentals	4,080.00
<b>Total Purchased Property Services</b>	<b>\$19,571.98</b>
<b>500 <u>Other Purchased Services</u></b>	
510 Student Transportation Services	39,746.35
520 Insurance – General	16,550.00
530 Communications	413.53
580 Travel	7,137.41
<b>Total Other Purchased Services</b>	<b>\$63,847.29</b>
<b>600 <u>Supplies</u></b>	
610 General Supplies	123,704.68
630 Food	412.00
640 Books and Periodicals	3,148.79
<b>Total Supplies</b>	<b>\$127,265.47</b>
<b>800 <u>Other Objects</u></b>	
810 Dues and Fees	12,718.00
890 Miscellaneous Expenditures	2,777.48
<b>Total Other Objects</b>	<b>\$15,495.48</b>
<b>Total 3000 Operation of Non-Instructional Services</b>	<b>\$674,178.26</b>

LEA : 116496503      Shamokin Area SD

Printed 11/26/2019 7:09:30 PM

<b>General Fund (10)</b>				
<b>3200 Student Activities</b>	<u>Elementary</u>	<u>Secondary</u>	<u>Federal</u>	<u>Total</u>
<b>100 <u>Personnel Services – Salaries</u></b>				
100 Personnel Services – Salaries				267,917.32
<b>Total Personnel Services – Salaries</b>				<b>\$267,917.32</b>
<b>200 <u>Personnel Services – Employee Benefits</u></b>				
210 Group Insurance – Contracted Provider				27,274.72
220 Social Security Contributions				20,403.94
230 PSERS Retirement Contributions				51,914.56
250 Unemployment Compensation				234.57
260 Workers' Compensation				2,411.64
<b>Total Personnel Services – Employee Benefits</b>				<b>\$102,239.43</b>
<b>300 <u>Purchased Professional and Technical Services</u></b>				
330 Other Professional Services				38,212.85
390 Other Purchased Professional and Technical Services				35,000.00
<b>Total Purchased Professional and Technical Services</b>				<b>\$73,212.85</b>
<b>400 <u>Purchased Property Services</u></b>				
410 Cleaning Services				1,873.00
430 Repairs and Maintenance Services				13,618.98
440 Rentals				4,080.00
<b>Total Purchased Property Services</b>				<b>\$19,571.98</b>
<b>500 <u>Other Purchased Services</u></b>				
510 Student Transportation Services				39,746.35
520 Insurance – General				16,550.00
530 Communications				413.53
580 Travel				7,137.41
<b>Total Other Purchased Services</b>				<b>\$63,847.29</b>
<b>600 <u>Supplies</u></b>				
610 General Supplies				121,049.78
630 Food				135.50
<b>Total Supplies</b>				<b>\$121,185.28</b>
<b>800 <u>Other Objects</u></b>				
810 Dues and Fees				12,718.00
890 Miscellaneous Expenditures				2,777.48
<b>Total Other Objects</b>				<b>\$15,495.48</b>
<b>Total 3200 Student Activities</b>				<b>\$663,469.63</b>

LEA : 116496503      Shamokin Area SD

Printed 11/26/2019 7:09:30 PM

General Fund (10)

3300 Community Services

	<u>Elementary</u>	<u>Secondary</u>	<u>Federal</u>	<u>Total</u>
<b>100 Personnel Services – Salaries</b>				
100 Personnel Services – Salaries			3,259.95	3,259.95
<b>Total Personnel Services – Salaries</b>			<b>\$3,259.95</b>	<b>\$3,259.95</b>
<b>200 Personnel Services – Employee Benefits</b>				
220 Social Security Contributions			249.35	249.35
230 PSERS Retirement Contributions			1,089.80	1,089.80
260 Workers’ Compensation			29.34	29.34
<b>Total Personnel Services – Employee Benefits</b>			<b>\$1,368.49</b>	<b>\$1,368.49</b>
<b>600 Supplies</b>				
610 General Supplies			2,411.64	2,411.64
630 Food			276.50	276.50
640 Books and Periodicals			3,148.79	3,148.79
<b>Total Supplies</b>			<b>\$5,836.93</b>	<b>\$5,836.93</b>
<b>Total 3300 Community Services</b>			<b>\$10,465.37</b>	<b>\$10,465.37</b>

LEA : 116496503     Shamokin Area SD

Printed 11/26/2019 7:09:30 PM

General Fund (10)

3400 Scholarships and Awards

Elementary                      Secondary                      Federal                      Total

600 <u>Supplies</u>				
610 General Supplies				243.26

Total Supplies				\$243.26
Total 3400 Scholarships and Awards				\$243.26

LEA : 116496503     Shamokin Area SD

Printed 11/26/2019 7:09:34 PM

General Fund (10)

<b>5000 Other Expenditures and Financing Uses</b>		<b><u>Total</u></b>
<b>800 <u>Other Objects</u></b>		
880 Refunds of Prior Years' Receipts	64.72	
<b>Total Other Objects</b>	<b>\$64.72</b>	
<b>900 <u>Other Uses of Funds</u></b>		
932 Capital Reserve Fund Transfers Applicable To Fund 32	105,316.07	
939 Other Fund Transfers	67,116.23	
<b>Total Other Uses of Funds</b>	<b>\$172,432.30</b>	
<b>Total 5000 Other Expenditures and Financing Uses</b>	<b>\$172,497.02</b>	

LEA : 116496503     Shamokin Area SD

Printed 11/26/2019 7:09:34 PM

General Fund (10)

5100 Debt Service / Other Expenditures and Financing Uses	<u>Elementary</u>	<u>Secondary</u>	<u>Federal</u>	<u>Total</u>
800 <u>Other Objects</u>				
880 Refunds of Prior Years' Receipts				64.72
Total Other Objects				\$64.72
Total 5100 Debt Service / Other Expenditures and Financing Uses				\$64.72



LEA : 116496503     Shamokin Area SD

Printed 11/26/2019 7:09:34 PM

General Fund (10)

5130 Refund of Prior Year Revenues / Receipts	<u>Elementary</u>	<u>Secondary</u>	<u>Federal</u>	<u>Total</u>
800 <u>Other Objects</u>				
880 Refunds of Prior Years' Receipts				64.72
Total Other Objects				\$64.72
Total 5130 Refund of Prior Year Revenues / Receipts				\$64.72

LEA : 116496503     Shamokin Area SD

Printed 11/26/2019 7:09:34 PM

General Fund (10)

5200 Interfund Transfers – Out	<u>Elementary</u>	<u>Secondary</u>	<u>Federal</u>	<u>Total</u>
900 <u>Other Uses of Funds</u>				
932 Capital Reserve Fund Transfers Applicable To Fund 32				105,316.07
939 Other Fund Transfers				67,116.23
Total Other Uses of Funds				\$172,432.30
Total 5200 Interfund Transfers – Out				\$172,432.30

LEA : 116496503     Shamokin Area SD

Printed 11/26/2019 7:09:34 PM

General Fund (10)

5230 Capital Projects Fund Transfers	<u>Elementary</u>	<u>Secondary</u>	<u>Federal</u>	<u>Total</u>
900 <u>Other Uses of Funds</u>				
932 Capital Reserve Fund Transfers Applicable To Fund 32				105,316.07
Total Other Uses of Funds				\$105,316.07
Total 5230 Capital Projects Fund Transfers				\$105,316.07

LEA : 116496503     Shamokin Area SD

Printed 11/26/2019 7:09:34 PM

General Fund (10)

5250 Enterprise Fund Transfers	<u>Elementary</u>	<u>Secondary</u>	<u>Federal</u>	<u>Total</u>
900 <u>Other Uses of Funds</u>				
939 Other Fund Transfers				67,116.23
Total Other Uses of Funds				\$67,116.23
Total 5250 Enterprise Fund Transfers				\$67,116.23

LEA : 116496503      Shamokin Area SD

Printed 11/26/2019 7:09:26 PM

Capital Reserve Fund - § 1431 (32)

		<u>Total</u>
<b>2000 Support Services</b>		
<b>400 <u>Purchased Property Services</u></b>		
420	Utility Services	2,275.00
430	Repairs and Maintenance Services	41,735.84
450	Construction Services	54,420.00
<b>Total Purchased Property Services</b>		<b>\$98,430.84</b>
<b>700 <u>Property</u></b>		
762	Capitalized Equipment - Replacement	7,955.00
<b>Total Property</b>		<b>\$7,955.00</b>
<b>800 <u>Other Objects</u></b>		
810	Dues and Fees	2,030.00
<b>Total Other Objects</b>		<b>\$2,030.00</b>
<b>Total 2000 Support Services</b>		<b>\$108,415.84</b>

LEA : 116496503     Shamokin Area SD

Printed 11/26/2019 7:09:26 PM

Capital Reserve Fund - § 1431 (32)

2500 Support Services – Business

	<u>Elementary</u>	<u>Secondary</u>	<u>Federal</u>	<u>Total</u>
800 <u>Other Objects</u>				
810 Dues and Fees			1,250.00	2,030.00
<b>Total Other Objects</b>			<b>\$1,250.00</b>	<b>\$2,030.00</b>
<b>Total 2500 Support Services – Business</b>			<b>\$1,250.00</b>	<b>\$2,030.00</b>

LEA : 116496503     Shamokin Area SD

Printed 11/26/2019 7:09:26 PM

Capital Reserve Fund - § 1431 (32)

2510 Fiscal Services	<u>Elementary</u>	<u>Secondary</u>	<u>Federal</u>	<u>Total</u>
800 <u>Other Objects</u>				
810 Dues and Fees			1,250.00	2,030.00
Total Other Objects			\$1,250.00	\$2,030.00
Total 2510 Fiscal Services			\$1,250.00	\$2,030.00

LEA : 116496503     Shamokin Area SD

Printed 11/26/2019 7:09:26 PM

Capital Reserve Fund - § 1431 (32)

2519 Other Fiscal Services

	<u>Elementary</u>	<u>Secondary</u>	<u>Federal</u>	<u>Total</u>
800 <u>Other Objects</u>				
810 Dues and Fees			1,250.00	2,030.00
<b>Total Other Objects</b>			<b>\$1,250.00</b>	<b>\$2,030.00</b>
<b>Total 2519 Other Fiscal Services</b>			<b>\$1,250.00</b>	<b>\$2,030.00</b>



LEA : 116496503      Shamokin Area SD

Printed 11/26/2019 7:09:26 PM

Capital Reserve Fund - § 1431 (32)

2600 Operation and Maintenance of Plant Services

Elementary                      Secondary                      Federal                      Total

400 Purchased Property Services

420 Utility Services				2,275.00
430 Repairs and Maintenance Services				41,735.84
450 Construction Services				54,420.00

<b>Total Purchased Property Services</b>				<b>\$98,430.84</b>
--	--	--	--	--------------------

700 Property

762 Capitalized Equipment - Replacement				7,955.00
---	--	--	--	----------

<b>Total Property</b>				<b>\$7,955.00</b>
-----------------------	--	--	--	-------------------

<b>Total 2600 Operation and Maintenance of Plant Services</b>				<b>\$106,385.84</b>
---	--	--	--	---------------------

LEA : 116496503      Shamokin Area SD

Printed 11/26/2019 7:09:26 PM

Capital Reserve Fund - § 1431 (32)

2620 Operation of Buildings Services

<u>Elementary</u>	<u>Secondary</u>	<u>Federal</u>	<u>Total</u>
-------------------	------------------	----------------	--------------

400 Purchased Property Services

420 Utility Services			2,275.00
----------------------	--	--	----------

430 Repairs and Maintenance Services			41,735.84
--------------------------------------	--	--	-----------

<b>Total Purchased Property Services</b>			<b>\$44,010.84</b>
--	--	--	--------------------

700 Property

762 Capitalized Equipment - Replacement			7,955.00
---	--	--	----------

<b>Total Property</b>			<b>\$7,955.00</b>
-----------------------	--	--	-------------------

<b>Total 2620 Operation of Buildings Services</b>			<b>\$51,965.84</b>
---	--	--	--------------------

LEA : 116496503     Shamokin Area SD

Printed 11/26/2019 7:09:26 PM

Capital Reserve Fund - § 1431 (32)

2630 Care and Upkeep of Grounds Services

Elementary

Secondary

Federal

Total

400 Purchased Property Services

450 Construction Services

54,420.00

Total Purchased Property Services				\$54,420.00
Total 2630 Care and Upkeep of Grounds Services				\$54,420.00

LEA : 116496503      Shamokin Area SD

Printed 11/26/2019 7:09:35 PM

Capital Reserve Fund - § 1431 (32)

5000 Other Expenditures and Financing Uses

Total

800 <u>Other Objects</u>	
830 Interest	305,140.10
Total Other Objects	\$305,140.10
900 <u>Other Uses of Funds</u>	
910 Redemption of Principal	431,000.00
Total Other Uses of Funds	\$431,000.00
Total 5000 Other Expenditures and Financing Uses	\$736,140.10

LEA : 116496503      Shamokin Area SD

Printed 11/26/2019 7:09:35 PM

Capital Reserve Fund - § 1431 (32)

5100 Debt Service / Other Expenditures and Financing Uses	<u>Elementary</u>	<u>Secondary</u>	<u>Federal</u>	<u>Total</u>
800 <u>Other Objects</u>				
830 Interest			209,013.84	305,140.10
<b>Total Other Objects</b>			<b>\$209,013.84</b>	<b>\$305,140.10</b>
900 <u>Other Uses of Funds</u>				
910 Redemption of Principal			226,000.00	431,000.00
<b>Total Other Uses of Funds</b>			<b>\$226,000.00</b>	<b>\$431,000.00</b>
<b>Total 5100 Debt Service / Other Expenditures and Financing Uses</b>			<b>\$435,013.84</b>	<b>\$736,140.10</b>

LEA : 116496503     Shamokin Area SD

Printed 11/26/2019 7:09:35 PM

Capital Reserve Fund - § 1431 (32)

5110 Debt Service	<u>Elementary</u>	<u>Secondary</u>	<u>Federal</u>	<u>Total</u>
800 <u>Other Objects</u>				
830 Interest			209,013.84	305,140.10
Total Other Objects			\$209,013.84	\$305,140.10
900 <u>Other Uses of Funds</u>				
910 Redemption of Principal			226,000.00	431,000.00
Total Other Uses of Funds			\$226,000.00	\$431,000.00
Total 5110 Debt Service			\$435,013.84	\$736,140.10

LEA : 116496503     Shamokin Area SD

Printed 11/26/2019 7:09:49 PM

	<u>General Fund(10)</u>	<u>Public Purpose Trust(27)</u>	<u>Other Compt Approved</u> <u>(28)</u>	<u>Athletic / Activity(29)</u>	<u>Capital Reserve (690.</u> <u>1850)(31)</u>
<b>1000 <u>Instruction</u></b>					
1100 Regular Programs - Elementary / Secondary	13,841,091.42				
1200 Special Programs - Elementary / Secondary	4,728,153.84				
1300 Vocational Education	1,440,412.57				
1400 Other Instructional Programs - Elementary / Secondary	418,917.23				
1500 Nonpublic School Programs	26,039.00				
1800 Pre-Kindergarten	368,016.23				
<b>Total Instruction</b>	<b>\$20,822,630.29</b>				
<b>2000 <u>Support Services</u></b>					
2100 Support Services - Students	569,774.86				
2200 Support Services - Instructional Staff	767,780.17				
2300 Support Services - Administration	1,719,879.63				
2400 Support Services - Pupil Health	593,783.25				
2500 Support Services - Business	769,877.23				
2600 Operation and Maintenance of Plant Services	2,733,280.12				
2700 Student Transportation Services	1,272,368.89				
2800 Support Services - Central	687,091.34				
<b>Total Support Services</b>	<b>\$9,113,835.49</b>				
<b>3000 <u>Operation of Non-Instructional Services</u></b>					
3200 Student Activities	663,469.63				
3300 Community Services	10,465.37				
3400 Scholarships and Awards	243.26				
<b>Total Operation of Non-Instructional Services</b>	<b>\$674,178.26</b>				
<b>5000 <u>Other Expenditures and Financing Uses</u></b>					
5100 Debt Service / Other Expenditures and Financing Uses	64.72				
5200 Interfund Transfers - Out	172,432.30				
<b>Total Other Expenditures and Financing Uses</b>	<b>\$172,497.02</b>				
<b>TOTAL ACTUAL EXPENDITURES &amp; OTHER FINANCING USES</b>	<b>\$30,783,141.06</b>				

LEA : 116496503      Shamokin Area SD

Printed 11/26/2019 7:09:49 PM

	<u>Capital Reserve (1431)(32)</u>	<u>Other Capital Projects Fund(39)</u>	<u>Debt Service(40)</u>	<u>Permanent(90)</u>	<u>Total</u>
<b>1000 Instruction</b>					
1100 Regular Programs - Elementary / Secondary					13,841,091.42
1200 Special Programs - Elementary / Secondary					4,728,153.84
1300 Vocational Education					1,440,412.57
1400 Other Instructional Programs - Elementary / Secondary					418,917.23
1500 Nonpublic School Programs					26,039.00
1800 Pre-Kindergarten					368,016.23
<b>Total Instruction</b>					<b>\$20,822,630.29</b>
<b>2000 Support Services</b>					
2100 Support Services - Students					569,774.86
2200 Support Services - Instructional Staff					767,780.17
2300 Support Services - Administration					1,719,879.63
2400 Support Services - Pupil Health					593,783.25
2500 Support Services - Business	2,030.00				771,907.23
2600 Operation and Maintenance of Plant Services	106,385.84				2,839,665.96
2700 Student Transportation Services					1,272,368.89
2800 Support Services - Central					687,091.34
<b>Total Support Services</b>	<b>\$108,415.84</b>				<b>\$9,222,251.33</b>
<b>3000 Operation of Non-Instructional Services</b>					
3200 Student Activities					663,469.63
3300 Community Services					10,465.37
3400 Scholarships and Awards					243.26
<b>Total Operation of Non-Instructional Services</b>					<b>\$674,178.26</b>
<b>5000 Other Expenditures and Financing Uses</b>					
5100 Debt Service / Other Expenditures and Financing Uses	736,140.10				736,204.82
5200 Interfund Transfers - Out					172,432.30
<b>Total Other Expenditures and Financing Uses</b>	<b>\$736,140.10</b>				<b>\$908,637.12</b>
<b>TOTAL ACTUAL EXPENDITURES &amp; OTHER FINANCING USES</b>	<b>\$844,555.94</b>				<b>\$31,627,697.00</b>



LEA : 116496503      Shamokin Area SD

Printed 11/26/2019 7:09:59 PM

PSERS Salary Data (Salary Data should relate to the General Fund only)

Amount	Description	Amount
	Total Salary Base for salaries subject to PSERS withholding	12,538,935.78
	Total Federally Funded salaries subject to PSERS withholding	937,739.21

Title I Expenditure Data

Amount	Description	Amount
	Expenditures Funded with Current Title I Funds	726,186.67
	Expenditures Funded with Carry over Title I Funds	50,229.12
Total	Title I Expenditure Data	\$776,415.79

Benefits for Staff Relative to Collective  
Bargaining Agreements

	OBJECT	COVERED	NOT COVERED	TOTAL
10 General Fund	No Self Insurance data to report			
	211 Medical Insurance	3,893,421.57		3,893,421.57
	212 Dental Insurance	119,821.27		119,821.27
	215 Eye Care Insurance	23,997.72		23,997.72
	216 Prescription Insurance			
	271 Self-Insurance Medical Benefits			
	272 Self-Insurance Dental Benefits			
	275 Self-Insurance Eye Care Benefits			
	276 Self-Insurance Prescription Benefits			
	FUND TOTAL	\$4,037,240.56		\$4,037,240.56
50 Enterprise Fund	No Self Insurance data to report			
	211 Medical Insurance	40,431.59		40,431.59
	212 Dental Insurance	983.08		983.08
	215 Eye Care Insurance	251.53		251.53
	216 Prescription Insurance			
	271 Self-Insurance Medical Benefits			
	272 Self-Insurance Dental Benefits			
	275 Self-Insurance Eye Care Benefits			
	276 Self-Insurance Prescription Benefits			
	FUND TOTAL	\$41,666.20		\$41,666.20
60 Internal Service Fund	No Self Insurance data to report			
	211 Medical Insurance			
	212 Dental Insurance			
	215 Eye Care Insurance			
	216 Prescription Insurance			
	271 Self-Insurance Medical Benefits			
	272 Self-Insurance Dental Benefits			
	275 Self-Insurance Eye Care Benefits			
	276 Self-Insurance Prescription Benefits			
	FUND TOTAL			
Total of All Funds		\$4,078,906.76		\$4,078,906.76

LEA : 116496503      Shamokin Area SD

Printed 11/26/2019 7:10:06 PM

Function	Special Education (Prior Year)	Nonspecial Education (Prior Year)	Total (Prior Year)	Special Education (Current Year)	Nonspecial Education (Current Year)	Total (Current Year)
2120 Guidance Services	58,006.10	234,446.36	292,452.46	61,884.73	250,122.85	312,007.58
2140 Psychological Services	21,138.44	85,436.36	106,574.80	22,629.17	91,461.52	114,090.69
2150 Speech Pathology and Audiology Services						
2160 Social Work Services	24,936.52	100,787.26	125,723.78	28,497.34	115,179.25	143,676.59
2260 Instruction and Curriculum Development Services	109,090.99	440,918.93	550,009.92	111,668.10	451,334.94	563,003.04
2350 Legal and Accounting Services	15,767.96	63,730.22	79,498.18	8,893.25	35,944.32	44,837.57
2420 Medical Services	1,276.46	5,159.13	6,435.59	1,221.86	4,938.48	6,160.34
2440 Nursing Services	96,636.58	390,581.25	487,217.83	107,896.34	436,090.45	543,986.79
2700 Student Transportation Services	257,280.04	1,039,862.56	1,297,142.60	252,366.33	1,020,002.56	1,272,368.89
Total	\$584,133.09	\$2,360,922.07	\$2,945,055.16	\$595,057.12	\$2,405,074.37	\$3,000,131.49

LEA : 116496503      Shamokin Area SD

Printed 11/26/2019 7:10:09 PM

(PRINCIPAL AMOUNTS ONLY)								
<u>GOVERNMENTAL FUNDS/ ACTIVITIES</u>	Short-Term Borrowing	General Obligation Bonds/Notes	Authority Building Obligations	Other Long-Term Debt	Other Post- Employment Benefits (OPEB)	Compensated Absences	Net Pension Liability	Total
1. Debt at Beginning of Fiscal Year		6,842,000.00			3,512,780.00	370,088.00	42,721,000.00	53,445,868.00
2. Additional Debt Incurred During Year						45,858.00		45,858.00
3. Retirements and Repayments		431,000.00			461,611.00		1,053,000.00	1,945,611.00
4. Debt at End of Fiscal Year		6,411,000.00			3,051,169.00	415,946.00	41,668,000.00	51,546,115.00
5. Accreted Interest at End Of Fiscal Year								
6. Total Debt and Accreted Interest		6,411,000.00			3,051,169.00	415,946.00	41,668,000.00	51,546,115.00
7. Current Portion P&I - Due within 1 year		710,337.00				25,000.00		735,337.00
8. Interest Paid during current fiscal year		305,140.00						305,140.00

(PRINCIPAL AMOUNTS ONLY)							
<u>PROPRIETARY FUNDS</u>							
1. Debt at Beginning of Fiscal Year							
2. Additional Debt Incurred During Year							
3. Retirements and Repayments							
4. Debt at End of Fiscal Year							
5. Accreted Interest at End Of Fiscal Year							
6. Total Debt and Accreted Interest							
7. Current Portion P&I - Due within 1 year							
8. Interest Paid during current fiscal year							

LEA : 116496503     Shamokin Area SD

Printed 11/26/2019 7:10:09 PM

Total Principal and Interest Payments Made by Your School - All Funds

Function	Fund		Principal (910)	Principal (920)	Interest (830)	Total (Principal +Interest)	Misc Other Uses (990)
5110	10	General Fund					
5110	20	Special Revenue Funds					
5110	30	Capital Projects Funds	431,000.00		305,140.10	736,140.10	
5110	40	Debt Service Fund					
5110	90	Permanent Fund					
5120	10	General Fund					
5120	20	Special Revenue Funds					
5120	30	Capital Projects Funds					
5120	40	Debt Service Fund					
Total Debt Payments - Governmental Funds			\$431,000.00		\$305,140.10	\$736,140.10	

Function	Fund		Principal (910)	Principal (920)	Interest (830)	Total (Principal +Interest)
5110	50	Enterprise Fund				
5110	60	Internal Service Fund				
5120	50	Enterprise Fund				
5120	60	Internal Service Fund				
Total Debt Payments - Proprietary Funds						

LEA : 116496503     Shamokin Area SD

Printed 11/26/2019 7:10:09 PM

**Debt Details**  
**Governmental Funds/ Activities**

Debt Category	Debt Issue Date (MM/YYYY)	Principal Amounts Only				Current Portion Due Within One Year (Principal and Interest)	Interest Paid During Fiscal Year
		Debt at Beginning of Fiscal Year	Additions	Reductions / Repayments	Debt at End of Fiscal Year		
General Obligation Bonds/Notes – CIB	09/2017	4,130,000.00		205,000.00	3,925,000.00	275,323.00	96,126.00
General Obligation Bonds/Notes – CIB	11/2011	2,712,000.00		226,000.00	2,486,000.00	435,014.00	209,014.00
Compensated Absences		370,088.00	45,858.00		415,946.00	25,000.00	
Other Post-Employment Benefits (OPEB)		3,512,780.00		461,611.00	3,051,169.00		
Net Pension Liability		42,721,000.00		1,053,000.00	41,668,000.00		
<b>Totals for Debt Entered:</b>		<b>\$53,445,868.00</b>	<b>\$45,858.00</b>	<b>\$1,945,611.00</b>	<b>\$51,546,115.00</b>	<b>\$735,337.00</b>	<b>\$305,140.00</b>

LEA : 116496503      Shamokin Area SD

Printed 11/26/2019 7:10:11 PM

**General Fund (10)**

Section 1: Tuition/Purchased Services as Reported within Expenditure Detail	Amount
Tuition Reported in General Fund Expenditures 1000-560	3,657,140.56
Purchased Services in General Fund Expenditures 1000-594 and 1000-597	2,116.91
<b>Section 1 Total</b>	<b>\$3,659,257.47</b>

Section 2: Tuition Paid to Institution Types During Fiscal Year	Tuition Paid For Nonspecial Education	Tuition Paid For Special Education	Total
1 1306 Institutions			
2 Institutionalized Children's Programs	2,116.91		2,116.91
3 Juveniles Incarcerated in Adult Facilities			
4 Residential Treatment Facilities			
5 Other Local Education Agencies	177,194.80		177,194.80
6 Brick and Mortar Charter Schools			
7 Cyber Charter Schools	1,952,524.15		1,952,524.15
8 Career and Technology Centers	905,043.00		905,043.00
9 Approved Private Schools	21,915.78		21,915.78
10 PA Chartered Schools for the Deaf and Blind			
11 Private Residential Rehabilitative Institutions	372,132.83		372,132.83
12 Juvenile Detention Centers			
13 Special Program Jointures			
14 Other Tuition Not Included Elsewhere In This Section	228,330.00		228,330.00
<b>Section 2 Total</b>	<b>\$3,659,257.47</b>		<b>\$3,659,257.47</b>

LEA : 116496503      Shamokin Area SD

Printed 11/26/2019 7:10:14 PM

Food Service / Cafeteria Operations Fund (51)

3000 Operation of Non-Instructional Services

Total

100 Personnel Services – Salaries	73,369.57
<b>Total Personnel Services – Salaries</b>	<b>\$73,369.57</b>
200 Personnel Services – Employee Benefits	
210 Group Insurance – Contracted Provider	41,734.41
220 Social Security Contributions	4,054.42
230 PSERS Retirement Contributions	17,864.65
250 Unemployment Compensation	366.73
260 Workers' Compensation	564.66
<b>Total Personnel Services – Employee Benefits</b>	<b>\$64,584.87</b>
400 Purchased Property Services	
410 Cleaning Services	6,680.00
430 Repairs and Maintenance Services	7,426.65
490 Other Purchased Property Services	402.00
<b>Total Purchased Property Services</b>	<b>\$14,508.65</b>
500 Other Purchased Services	
570 Food Service Management	584,122.36
<b>Total Other Purchased Services</b>	<b>\$584,122.36</b>
600 Supplies	
610 General Supplies	70,637.67
620 Energy	92,187.38
630 Food	587,926.53
650 Supplies & Fees – Technology Related	1,971.00
<b>Total Supplies</b>	<b>\$752,722.58</b>
700 Property	
740 Depreciation	26,208.12
<b>Total Property</b>	<b>\$26,208.12</b>
<b>Total 3000 Operation of Non-Instructional Services</b>	<b>\$1,515,516.15</b>



LEA : 116496503      Shamokin Area SD

Printed 11/26/2019 7:10:14 PM

Food Service / Cafeteria Operations Fund (51)

3100 Food Services	Elementary	Secondary	Federal	Total
100 <u>Personnel Services – Salaries</u>				
100 Personnel Services – Salaries				73,369.57
<b>Total Personnel Services – Salaries</b>				<b>\$73,369.57</b>
200 <u>Personnel Services – Employee Benefits</u>				
210 Group Insurance – Contracted Provider				41,734.41
220 Social Security Contributions				4,054.42
230 PSERS Retirement Contributions				17,864.65
250 Unemployment Compensation				366.73
260 Workers' Compensation				564.66
<b>Total Personnel Services – Employee Benefits</b>				<b>\$64,584.87</b>
400 <u>Purchased Property Services</u>				
410 Cleaning Services				6,680.00
430 Repairs and Maintenance Services				7,426.65
490 Other Purchased Property Services				402.00
<b>Total Purchased Property Services</b>				<b>\$14,508.65</b>
500 <u>Other Purchased Services</u>				
570 Food Service Management				584,122.36
<b>Total Other Purchased Services</b>				<b>\$584,122.36</b>
600 <u>Supplies</u>				
610 General Supplies				70,637.67
620 Energy				92,187.38
630 Food				587,926.53
650 Supplies & Fees – Technology Related				1,971.00
<b>Total Supplies</b>				<b>\$752,722.58</b>
700 <u>Property</u>				
740 Depreciation				26,208.12
<b>Total Property</b>				<b>\$26,208.12</b>
<b>Total 3100 Food Services</b>				<b>\$1,515,516.15</b>

	<u>Food Service(51)</u>	<u>Child Care Operations(52)</u>	<u>Other Enterprise(58)</u>	<u>Internal Service(60)</u>	<u>Total</u>
<b>3000 <u>Operation of Non-Instructional Services</u></b>					
3100 Food Services	1,515,516.15				1,515,516.15
<b>Total Operation of Non-Instructional Services</b>	<b>\$1,515,516.15</b>				<b>\$1,515,516.15</b>
<b>TOTAL ACTUAL EXPENDITURES &amp; OTHER FINANCING USES</b>	<b>\$1,515,516.15</b>				<b>\$1,515,516.15</b>

LEA : 116496503 Shamokin Area SD

Printed 11/26/2019 7:10:29 PM

Fund	School	School Number	Local Personnel	Local Nonpersonnel	State Personnel	State Nonpersonnel	Federal Personnel	Federal Nonpersonnel	Total	Explanation
10										
	Shamokin Area El Sch	7009	1,930,687.40	415,807.82	5,913,817.33	1,281,629.49	974,206.09	26,509.12	10,542,657.25	
	Shamokin Area HS	7893	2,195,606.51	210,893.56	6,414,615.10	616,140.01	27,452.17	22,596.17	9,487,303.52	
	Shamokin Area Intermediate Sch	8283	542,725.27	129,654.21	1,585,609.14	388,962.62	11,764.74	7,872.97	2,666,588.95	
	Shamokin Area MS	7892	633,451.16	171,279.47	1,850,671.02	500,404.74	12,537.80	8,247.58	3,176,591.77	
Total			5,302,470.34	927,635.06	15,764,712.59	2,787,136.86	1,025,960.80	65,225.84	25,873,141.49	

LEA : 116496503     Shamokin Area SD

Printed 11/26/2019 7:10:33 PM

	<u>Nonspecial Education</u>	<u>Special Education</u>
<b>1000 Instruction</b>		
1110 Regular Programs	10,235	14,982
1441 Adjudicated / Court-Placed Programs	10,235	14,982
<b>Total Instruction</b>	<b>\$20,470</b>	<b>\$29,964</b>
<b>TOTAL EXPENDITURES</b>	<b>\$20,470</b>	<b>\$29,964</b>

LEA : 116496503     Shamokin Area SD

Printed 11/26/2019 7:10:36 PM

	<u>Nonspecial Education</u>	<u>Special Education</u>
<b>1000 Instruction</b>		
<b>1100 <u>Regular Programs - Elementary / Secondary</u></b>		
322 Professional Educational Services - Ius	\$10,235	\$14,982
<b>Total Regular Programs - Elementary / Secondary</b>	<b>\$10,235</b>	<b>\$14,982</b>
<b>1400 <u>Other Instructional Programs - Elementary / Secondary</u></b>		
322 Professional Educational Services - Ius	\$10,235	\$14,982
<b>Total Other Instructional Programs - Elementary / Secondary</b>	<b>\$10,235</b>	<b>\$14,982</b>
<b>Total Instruction</b>	<b>\$20,470</b>	<b>\$29,964</b>
<b>TOTAL EXPENDITURES</b>	<b>\$20,470</b>	<b>\$29,964</b>