

LEA Name : Shamokin Area SD
Address : 2000 W State St
Coal Township , PA 17866

County : Northumberland
AUN Number : 116496503
LEA Type : SD

Annual Financial Report
Accuracy Certification Statement
For Fiscal Year Ending
6/30/2018

Pennsylvania Department of Education
&
Office of Comptroller Operations

PDE-2056: Intermediate Unit
PDE-2057: School District, AVTS/CTC, Charter School,
and Special Program Jointure

CERTIFICATION: By signing this page I agree that the electronic data submitted is a complete and accurate statement of the financial operations and status of the local education agency for the fiscal year. It has been prepared in accordance with generally accepted accounting principles and established Commonwealth of PA reporting guidelines.


Chief School Administrator Signature

Date

3-25-19


Board Secretary Signature

Date

3/27/19

Karen Colangelo

Contact Person

kcolangelo@indians.k12.pa.us

Contact Person E-mail Address

(570)648-5752

Ext :4123

Contact Person Telephone Number

(570)648-2592

Contact Person Fax Number

(Pursuant to PA School Code Section 218(b))

County : Northumberland

Audit Certification Due:
12/31/2018

Date _____

Auditor E-mail: cholleran@klacikpc.com

Contact Person Fax Number

LEA Name : Shamokin Area SD
Address : 2000 W State St
Coal Township , PA 17866

County : Northumberland
AUN Number : 116496503
LEA Type : SD

Annual Financial Report
Accuracy Certification Statement

For Fiscal Year Ending
6/30/2018

Pennsylvania Department of Education
&
Office of Comptroller Operations

PDE-2056: Intermediate Unit
PDE-2057: School District, AVTS/CTC, Charter School,
and Special Program Jointure

CERTIFICATION: By signing this page I agree that the electronic data submitted is a complete and accurate statement of the financial operations and status of the local education agency for the fiscal year. It has been prepared in accordance with generally accepted accounting principles and established Commonwealth of PA reporting guidelines.



Chief School Administrator Signature

11-27-18

Date



Board Secretary Signature

11-27-18

Date

Karen Colangelo

Contact Person

kcolangelo@indians.k12.pa.us

Contact Person E-mail Address

(570)648-5752

Ext :4123

Contact Person Telephone Number

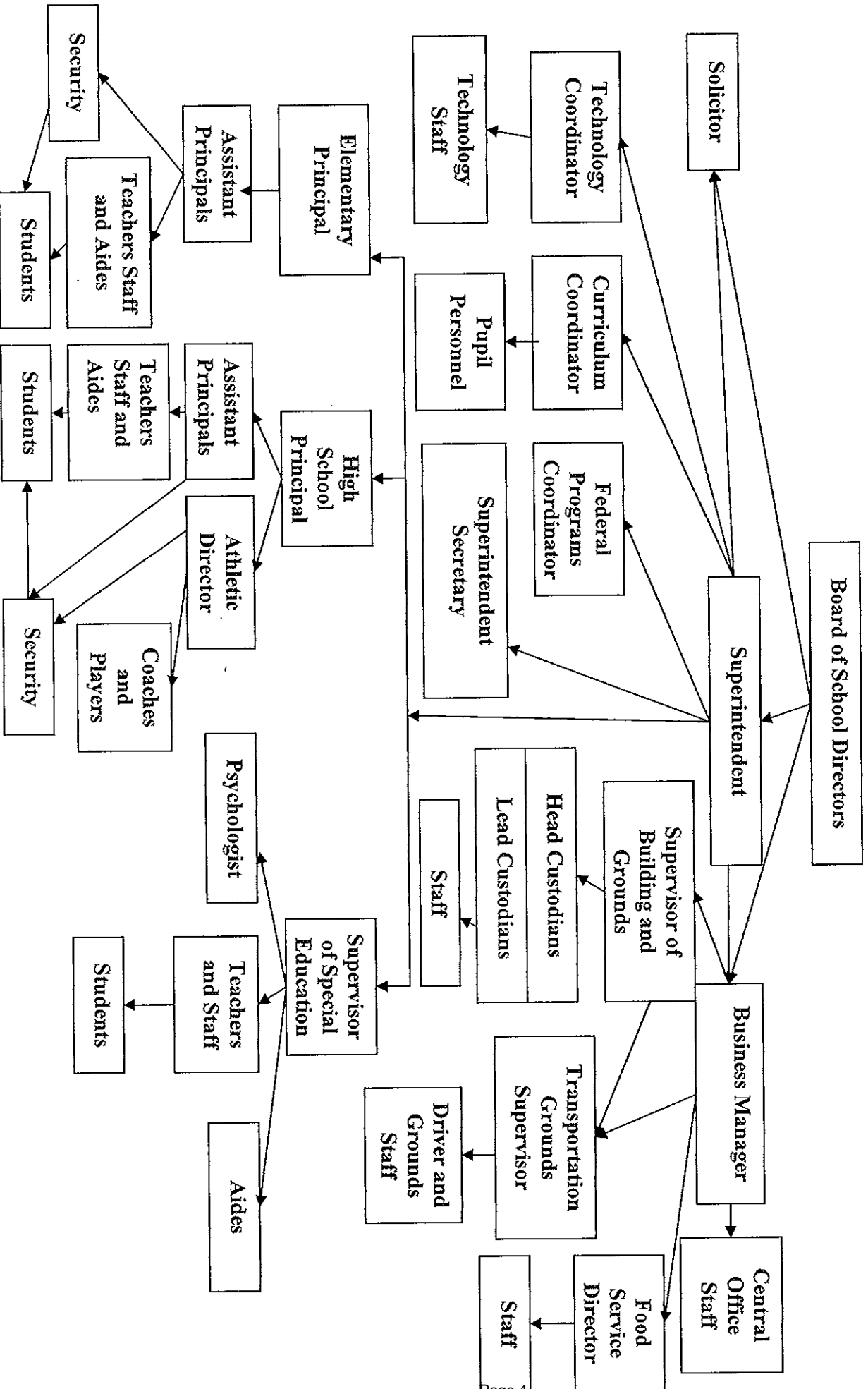
(570)648-2592

Contact Person Fax Number

SHAMOKIN AREA SCHOOL DISTRICT ORGANIZATIONAL CHART

No. 008

SECTION: Local Board Procedures
TITLE: Organization Chart
ADOPTED:
REVISED:



LEA : 116496503 Shamokin Area SD

Printed 3/28/2019 8:53:28 AM

Val Number	Description	Justification
12195	<p>REG: Current Year AFR Beginning Fund Balance must equal Prior Year AFR Ending Fund Balance. Justifications to this error must fully explain the situation that prompted a fund balance restatement. "Auditor Adjustment" is not a sufficient justification.</p> <p>Total Govt Funds, Beg Bal: \$9,668,434.00 PY Ending Bal, Govt Funds: \$9,775,550.00</p>	<p>2016-17 general fund afr balance was 7,925,165. Auditors completed audit in March and there was an additional adjusting entries that resulted in the difference of \$107,115.97. This resulted in a revised ending balance 6/30/17 general fund \$7,818,049.1.</p>
12196	<p>REG - Fund 10: Current Year AFR Beginning Fund Balance must equal Prior Year AFR Ending Fund Balance. Justifications to this error must fully explain the situation that prompted a fund balance restatement. "Auditor Adjustment" is not a sufficient justification.</p> <p>REG Fund 10, Beg Fund Bal: \$7,818,049.00 PY Ending Fund Balance: \$7,925,165.00</p>	<p>2016-17 general fund afr balance was 7,925,165. Auditors completed audit in March and there was an additional ajusting entry for \$107,115.97. This resulted in a revised ending balance 6/30/17 general fund \$7,818.049. 1. NAG – Fund 32 should show \$7955</p>
13020	<p>REG: Interfund Trans-Out must equal REG Interfund Trans-In plus REP Interfund Trans In minus REP Interfund Trans-Out. (REG 5200 = REG 9300 + REP 9300 - REP 5200) Reference amts do not include any incoming transfers of the Fid. Funds. Include Fid. Fund incoming transfer info in the justification. Correct or enter a justification.</p> <p>Transfers Out (REG 5200): \$743,683.00 (REG 9300) + (REP 9300) - (REP 5200) : \$736,193.00</p>	<p>Donations made for a back pack program that is ran by an activity group were deposited into the general fund. A transfer was made from general fund to the activity fund in the amount of \$7,489.26. 10-5280-000-169 debit and 80-6790-000-169 credit</p>
16075	<p>REP - Fund 51: Function 5520 has an amount entered as a Special Item. Provide a description of this Special Item.</p> <p>REP 5520, Fund 51: \$80.00</p>	<p>Student sent in \$80 cash for cafeteria account. Staff verified sending envelope with funds to cafe clerk. Cafe clerk never recieved. District investigated. District refunded the \$80.</p>
16230	<p>REP Fund 51 – Net Position - Beginning of Fiscal Year must equal Prior Year AFR, Net Position - End of Year. Justifications to this error must fully explain the situation that prompted a fund balance restatement. "Auditor Adjustment" is not a sufficient justification.</p> <p>REP Fund 51 – Net Position - Beginning of Fiscal Year: \$1,533,399.00 REP Fund 51, Prior Year AFR, Net Position - End of Year: \$778,286.00</p>	<p>it was identified the student accounts were not being decreased for point of sales in the district accounting system, but were probably tracked within the cafe tracking finance software of pos. A restatement of NP in FY18 \$755113</p>
41140	<p>Expenditure Detail - There is an entry in function 5150- 990 object "Other". Please explain what constitutes "Other".</p> <p>Expenditure 5150-990, Fund 39: \$24,082.20</p>	<p>this is the long term discount for the series 2017 bond</p>
50280	<p>SOIN: Current Year AFR amount must equal Prior Year AFR amount.</p> <p>SOIN, Beg Bal, Gen Obl Bnds: \$7,147,614.00 PY Ending Bal, Gen Obl Bnds: \$7,292,709.49</p>	<p>Series 2015 was refinanced with series 2017. Series 2015 was not drawn down to \$0. The \$145,095.49 is the amount that was not drawn down from the principal in the series 2015.</p>

LEA : 116496503 Shamokin Area SD

Printed 3/28/2019 8:53:28 AM

50450 SESS - 2350 Legal and Accounting Services: SESS Schedule amounts for Special Education vary from prior year by 40% or more. Correct the data or enter a justification.

 SESS Schedule 2350: \$15,767.96
 Prior Year SESS Schedule 2350: \$4,490.16

Both bargaining units held negotiation sessions in which attorney was present. Other litigation concerning Northwestern Academy and True Core educational services. Personnel concerns were also addressed with solicitor opinion being needed.

LEA : 116496503 Shamokin Area SD

Printed 3/28/2019 8:52:48 AM

Amounts Expressed in Whole Dollars		<u>General Fund</u> <u>(10)</u>	<u>Public Purpose Trust</u> <u>(27)</u>	<u>Other Compt Approved</u> <u>(28)</u>	<u>Athletic / Activity</u> <u>(29)</u>	<u>Capital Reserve (690.</u> <u>1850)</u> <u>(31)</u>
Assets And Deferred Outflows Of Resources						
Assets						
0100	Cash and Cash Equivalents	6,474,012				
0110	Investments	217,851				
0120	Taxes Receivable	2,846,686				
0130	Due From Other Funds	149,915				
0141	Due From Other Governments	3,873,709				
0142	State Revenue Receivable	1,074,564				
0143	Federal Revenue Receivable	279,117				
0145	Other Intergovernmental Revenue Receivable					
0146	Due from Primary Government					
0147	Due from Component Unit					
0150	Other Receivables	(38,286)				
0170	Inventories					
0180	Prepaid Expenses (Expenditures)					
0190	Other Current Assets					
Total Assets		\$14,877,568				
0910	Deferred Outflows of Resources					
Total Assets And Deferred Outflows Of Resources		\$14,877,568				

LEA : 116496503 Shamokin Area SD

Printed 3/28/2019 8:52:48 AM

Amounts Expressed in Whole Dollars		<u>Capital Reserve (1431)</u> <u>(32)</u>	<u>Other Capital Projects</u> <u>Fund</u> <u>(39)</u>	<u>Debt Service</u> <u>(40)</u>	<u>Permanent</u> <u>(90)</u>	<u>Total Governmental</u> <u>Funds</u>
Assets And Deferred Outflows Of Resources						
Assets						
0100	Cash and Cash Equivalents	1,636,421				8,110,433
0110	Investments					217,851
0120	Taxes Receivable					2,846,686
0130	Due From Other Funds					149,915
0141	Due From Other Governments					3,873,709
0142	State Revenue Receivable					1,074,564
0143	Federal Revenue Receivable					279,117
0145	Other Intergovernmental Revenue Receivable					
0146	Due from Primary Government					
0147	Due from Component Unit					
0150	Other Receivables	7,955				(30,331)
0170	Inventories					
0180	Prepaid Expenses (Expenditures)					
0190	Other Current Assets					
Total Assets		\$1,644,376				\$16,521,944
0910	Deferred Outflows of Resources					
Total Assets And Deferred Outflows Of Resources		\$1,644,376				\$16,521,944

LEA : 116496503 Shamokin Area SD

Printed 3/28/2019 8:52:48 AM

Amounts Expressed in Whole Dollars	<u>General Fund</u> <u>(10)</u>	<u>Public Purpose Trust</u> <u>(27)</u>	<u>Other Compt Approved</u> <u>(28)</u>	<u>Athletic / Activity</u> <u>(29)</u>	<u>Capital Reserve (690.</u> <u>1850)</u> <u>(31)</u>
Liabilities And Deferred Inflows Of Resources And Fund Balances					
Liabilities					
0400 Due to Other Funds	(1,951)				
0411 Due to Other Governments					
0412 Due to Primary Government					
0413 Due to Component Unit					
0420 Accounts Payable	2,994,696				
0430 Contracts Payable					
0440 Current Portion of Long-Term Debt					
0450 Short-Term Payables					
0461 Accrued Salaries and Benefits	1,542,427				
0462 Payroll Deductions and Withholding	924,424				
0480 Unearned Revenues					
0490 Other Current Liabilities	150				
Total Liabilities	\$5,459,746				
0950 Deferred Inflows of Resources	2,760,040				
Fund Balances					
0810 Nonspendable Fund Balance					
0820 Restricted Fund Balance					
0830 Committed Fund Balance					
0840 Assigned Fund Balance	2,000,000				
0850 Unassigned Fund Balance	4,657,782				
Total Fund Balances	\$6,657,782				
Total Liabilities, Deferred Inflows Of Resources And Fund Balances	\$14,877,568				

LEA : 116496503 Shamokin Area SD

Printed 3/28/2019 8:52:48 AM

Amounts Expressed in Whole Dollars	<u>Capital Reserve (1431)</u> <u>(32)</u>	<u>Other Capital Projects</u> <u>Fund</u> <u>(39)</u>	<u>Debt Service</u> <u>(40)</u>	<u>Permanent</u> <u>(90)</u>	<u>Total Governmental</u> <u>Funds</u>
Liabilities And Deferred Inflows Of Resources And Fund Balances					
Liabilities					
0400 Due to Other Funds					(1,951)
0411 Due to Other Governments					
0412 Due to Primary Government					
0413 Due to Component Unit					
0420 Accounts Payable	3,610				2,998,306
0430 Contracts Payable					
0440 Current Portion of Long-Term Debt					
0450 Short-Term Payables					
0461 Accrued Salaries and Benefits					1,542,427
0462 Payroll Deductions and Withholding					924,424
0480 Unearned Revenues					
0490 Other Current Liabilities					150
Total Liabilities	\$3,610				\$5,463,356
0950 Deferred Inflows of Resources					2,760,040
Fund Balances					
0810 Nonspendable Fund Balance					
0820 Restricted Fund Balance	1,640,766				1,640,766
0830 Committed Fund Balance					
0840 Assigned Fund Balance					2,000,000
0850 Unassigned Fund Balance					4,657,782
Total Fund Balances	\$1,640,766				\$8,298,548
Total Liabilities, Deferred Inflows Of Resources And Fund Balances	\$1,644,376				\$16,521,944

LEA : 116496503 Shamokin Area SD

Printed 3/28/2019 8:52:49 AM

Amounts Expressed in Whole Dollars	General Fund (10)	Public Purpose Trust (27)	Other Compt Approved (28)	Athletic / Activity (29)	Capital Reserve (690. 1850) (31)
Revenues					
6000 Revenue from Local Sources	6,583,352				
7000 Revenue from State Sources	20,079,295				
8000 Revenue from Federal Sources	1,230,705				
Total Revenues	\$27,893,352				
Expenditures					
1000 Instruction	19,320,705				
2000 Support Services	8,397,429				
3000 Operation of Non-Instructional Services	555,150				
4000 Facilities Acquisition, Construction and Improvement Services					
5110 Debt Service					
5130 Refund of Prior Year Revenues / Receipts	68,929				
Total Expenditures	\$28,342,213				
Excess (Deficiency) Of Revenues Over Expenditures	(\$448,861)				
Other Financing Sources (Uses)					
9110 Face Value of Bonds Issued					
9120 Proceeds from Refunding of Bonds					
9130 Bond Premiums					
9200 Proceeds from Extended-Term Financing					
9300 Interfund Transfers - IN					
9400 Sale of or Compensation for Loss of Fixed Assets					
9710 Transfers from Component Units					
9720 Transfers from Primary Governments					
9910 Other Financing Sources Not Listed in the 9000 Series					
9990 Insurance Recoveries	32,278				
5120 Debt Service – Refunded Bonds					
5150 Bond Discounts					
5200 Interfund Transfers – Out	743,683				
5300 Transfers Out to Component Units/Primary Governments					
Total Other Financing Sources (Uses)	(\$711,405)				

LEA : 116496503 Shamokin Area SD

Printed 3/28/2019 8:52:49 AM

Amounts Expressed in Whole Dollars	Capital Reserve (1431) (32)	Other Capital Projects Fund (39)	Debt Service (40)	Permanent (90)	Total Governmental Funds
Revenues					
6000 Revenue from Local Sources	59,785				6,643,137
7000 Revenue from State Sources					20,079,295
8000 Revenue from Federal Sources					1,230,705
Total Revenues	\$59,785				\$27,953,137
Expenditures					
1000 Instruction					19,320,705
2000 Support Services	207,190	99,515			8,704,134
3000 Operation of Non-Instructional Services					555,150
4000 Facilities Acquisition, Construction and Improvement Services					
5110 Debt Service	733,365	543			733,908
5130 Refund of Prior Year Revenues / Receipts					68,929
Total Expenditures	\$940,555	\$100,058			\$29,382,826
Excess (Deficiency) Of Revenues Over Expenditures	(\$880,770)	(\$100,058)			(\$1,429,689)
Other Financing Sources (Uses)					
9110 Face Value of Bonds Issued					
9120 Proceeds from Refunding of Bonds		4,285,000			4,285,000
9130 Bond Premiums					
9200 Proceeds from Extended-Term Financing					
9300 Interfund Transfers - IN	671,153				671,153
9400 Sale of or Compensation for Loss of Fixed Assets					
9710 Transfers from Component Units					
9720 Transfers from Primary Governments					
9910 Other Financing Sources Not Listed in the 9000 Series					
9990 Insurance Recoveries					32,278
5120 Debt Service – Refunded Bonds		4,160,860			4,160,860
5150 Bond Discounts		24,082			24,082
5200 Interfund Transfers – Out					743,683
5300 Transfers Out to Component Units/Primary Governments					
Total Other Financing Sources (Uses)	\$671,153	\$100,058			\$59,806

Amounts Expressed in Whole Dollars		<u>General Fund</u> <u>(10)</u>	<u>Public Purpose Trust</u> <u>(27)</u>	<u>Other Compt Approved</u> <u>(28)</u>	<u>Athletic / Activity</u> <u>(29)</u>	<u>Capital Reserve</u> <u>(690.</u> <u>1850)</u> <u>(31)</u>
Special And Extraordinary Items						
9920	Special Items – Gains					
9930	Extraordinary Items – Gains					
5520	Special Items – Losses					
5530	Extraordinary Items – Losses					
Net Change In Fund Balances		(\$1,160,266)				
Fund Balance						
0001	Fund Balance - Beginning of Fiscal Year	7,818,049				
Fund Balance - End Of Year		\$6,657,783				

Amounts Expressed in Whole Dollars		<u>Capital Reserve (1431)</u> <u>(32)</u>	<u>Other Capital Projects</u> <u>Fund</u> <u>(39)</u>	<u>Debt Service</u> <u>(40)</u>	<u>Permanent</u> <u>(90)</u>	<u>Total Governmental</u> <u>Funds</u>
Special And Extraordinary Items						
9920	Special Items – Gains					
9930	Extraordinary Items – Gains					
5520	Special Items – Losses					
5530	Extraordinary Items – Losses					
Net Change In Fund Balances		(\$209,617)				(\$1,369,883)
Fund Balance						
0001	Fund Balance - Beginning of Fiscal Year	1,850,384	1			9,668,434
Fund Balance - End Of Year		\$1,640,767	\$1			\$8,298,551

LEA : 116496503 Shamokin Area SD

Printed 3/28/2019 8:52:50 AM

Amounts Expressed in Whole Dollars	<u>Food Service</u> <u>(51)</u>	<u>Child Care</u> <u>Operations</u> <u>(52)</u>	<u>Other Enterprise</u> <u>(58)</u>	<u>TOTAL</u>	<u>Internal Service</u> <u>(60)</u>
Assets And Deferred Outflows Of Resources					
Current Assets					
0100 Cash and Cash Equivalents	1,675,483			1,675,483	
0110 Investments					
0130 Due From Other Funds					
0141 Due From Other Governments					
0142 State Revenue Receivable	8,081			8,081	
0143 Federal Revenue Receivable	165,929			165,929	
0146 Due from Primary Government					
0147 Due from Component Unit					
0150 Other Receivables					
0170 Inventories	29,060			29,060	
0180 Prepaid Expenses (Expenditures)					
0190 Other Current Assets					
Total Current Assets	\$1,878,553			\$1,878,553	
Noncurrent Assets					
0211 Land					
0212 Site Improvements (Net)					
0220 Buildings and Building Improvements (Net)					
0230 Machinery, Equipment and Furniture (Net)	57,865			57,865	
0250 Construction in Progress					
0260 Long Term Prepayments					
0290 Other Noncurrent Assets					
Total Noncurrent Assets	\$57,865			\$57,865	
0910 Deferred Outflows of Resources					
Total Assets And Deferred Outflows Of Resources	\$1,936,418			\$1,936,418	

LEA : 116496503 Shamokin Area SD

Printed 3/28/2019 8:52:50 AM

Amounts Expressed in Whole Dollars	<u>Food Service</u> <u>(51)</u>	<u>Child Care</u> <u>Operations</u> <u>(52)</u>	<u>Other Enterprise</u> <u>(58)</u>	<u>TOTAL</u>	<u>Internal Service</u> <u>(60)</u>
Liabilities And Deferred Inflows Of Resources And Net Position					
Current Liabilities					
0400 Due to Other Funds	149,915			149,915	
0411 Due to Other Governments					
0413 Due to Component Unit					
0420 Accounts Payable	113,980			113,980	
0430 Contracts Payable					
0440 Current Portion of Long-Term Debt					
0450 Short-Term Payables					
0461 Accrued Salaries and Benefits					
0462 Payroll Deductions and Withholding					
0480 Unearned Revenues	16,703			16,703	
0490 Other Current Liabilities	8,618			8,618	
Total Current Liabilities	\$289,216			\$289,216	
Noncurrent Liabilities					
0510 Bonds Payable					
0520 Extended-Term Financing Agreements Payable					
0530 Lease-Purchase Obligations					
0540 Accumulated Compensated Absences					
0550 Authority Lease Obligations					
0560 Other Post-Employment Benefits (OPEB)					
0570 Net Pension Liability					
0599 Other Noncurrent Liabilities					
Total Noncurrent Liabilities					
Total Liabilities	\$289,216			\$289,216	
0950 Deferred Inflows of Resources					
Net Position					
0791 Net Investment in Capital Assets	57,865			57,865	
0008 Restricted Net Position (0792 – 0798)					
0799 Unrestricted Net Position	1,589,337			1,589,337	
Total Net Position	\$1,647,202			\$1,647,202	
Total Liabilities And Deferred Inflows Of Resources And Net Position	\$1,936,418			\$1,936,418	

Amounts Expressed in Whole Dollars	Food Service (51)	Child Care Operations (52)	Other Enterprise (58)	TOTAL	Internal Service (60)
Operating Revenues					
6600 Food Service Revenue	344,268			344,268	
0071 Charges for Services					
0072 Other Operating Revenue					
Total Operating Revenues	\$344,268			\$344,268	
Operating Expenses					
100 Personnel Services – Salaries	70,510			70,510	
200 Personnel Services – Employee Benefits	97,081			97,081	
300 Purchased Professional and Technical Services					
400 Purchased Property Services	6,443			6,443	
500 Other Purchased Services	559,117			559,117	
600 Supplies	683,274			683,274	
740 Depreciation	44,919			44,919	
810 Dues and Fees	390			390	
890 Miscellaneous Expenditures					
Total Operating Expenses	\$1,461,734			\$1,461,734	
Operating Income (Loss)	(\$1,117,466)			(\$1,117,466)	
Non Operating Revenues (Expenses)					
6500 Earnings on Investments	17,063			17,063	
6920 Contributions and Donations from Private Sources					
6930 Gains or Losses on Sale of Fixed Assets					
6991 Refunds of a Prior Year Expenditure					
7000 Revenue from State Sources	48,089			48,089	
8000 Revenue from Federal Sources	1,101,158			1,101,158	
820 Claims and Judgments Against the LEA					
830 Interest					
TOTAL Non Operating Revenues (Expenses)	\$1,166,310			\$1,166,310	
Income (Loss) Before Contributions And Transfers	\$48,844			\$48,844	

Amounts Expressed in Whole Dollars	<u>Food Service</u> <u>(51)</u>	<u>Child Care Operations</u> <u>(52)</u>	<u>Other Enterprise</u> <u>(58)</u>	<u>TOTAL</u>	<u>Internal Service</u> <u>(60)</u>
Contributions, Transfers, and Special and Extraordinary Items					
5200 Interfund Transfers – Out					
5300 Transfers Out to Component Units/Primary Governments					
5520 Special Items – Losses	80			80	
5530 Extraordinary Items – Losses					
9300 Interfund Transfers - IN	65,040			65,040	
9500 Capital Contributions					
9700 Transfers IN From Component Units/Primary Governments					
9920 Special Items – Gains					
9930 Extraordinary Items – Gains					
Change In Net Position	\$113,804			\$113,804	
0002 Net Position - Beginning of Fiscal Year	1,533,399			1,533,399	
0003 Accounting Changes / Residual Equity Transfers					
Net Position - End Of Year	\$1,647,203			\$1,647,203	

LEA : 116496503 Shamokin Area SD

Printed 3/28/2019 8:52:54 AM

Amounts Expressed in Whole Dollars	<u>Food Service</u> <u>(51)</u>	<u>Child Care Operations</u> <u>(52)</u>	<u>Other Enterprise</u> <u>(58)</u>	<u>TOTAL</u>	<u>Internal Service(60)</u>
Cash Flows From Operating Activities					
0011 Cash Receipts From Users	342,097			342,097	
0012 Cash Receipts From Assessments Made to Other Funds					
0013 Cash Receipts From Earnings on Investments					
0014 Cash Receipts From Other Operating Revenue					
0015 Cash Payments To Employees For Services	167,592			167,592	
0016 Cash Payments For Insurance Claims					
0017 Cash Payments To Suppliers For Goods and Services	1,054,063			1,054,063	
0018 Cash Payments For Other Operating Expenses					
Net Cash Provided By (Used For) Operating Activities	(\$879,558)			(\$879,558)	
Cash Flows From Non-Capital Financing Activities					
0021 Receipts From Local Sources - 6000					
0022 Receipts From State Sources - 7000	48,450			48,450	
0023 Receipts From Federal Sources -8000	1,127,836			1,127,836	
0024 Notes and Loans Received (Repaid)					
0025 Interest Paid on Notes/Loans - 5100-830					
0026 Operating Transfers In (Out)/Residual Equity Trans					
0027 Operating Transfers In (Out) Primary Government / Comp Unit	65,041			65,041	
0028 Receipts From Refund of Prior Year Expenditures - 6991					
0029 Special and Extraordinary Gains (losses)	(80)			(80)	
0030 Receipts from Insurance Recoveries -9990					
Net Cash Prov By (Used for) Non-Capital Financing Activities	\$1,241,247			\$1,241,247	
Cash Flows From Capital and Related Financing Activities					
0031 Payments For Fac Acq, Const, and Imp - 4000					
0032 Gain / (Loss) on Sale of Fixed Assets - 6930					
0033 Proceeds From Extended Term Financing - 9200					
0034 Principal Paid on Financing Agreements					
0035 Interest Paid on Financing Agreements - 5100-830					
0036 (Inc) Dec in Contributed Capital					
Net Cash Prov By (Used for) Capital and Related Financing Activities					
Cash Flows From Investing Activities					
0041 Earnings on Investments - 6500	17,064			17,064	
0042 Purchase of Inv Securities / Deposits to Inv Pools					
0043 Receipts From Investment Pool Withdrawals					
0044 Proceeds from Sale and Maturity of Inv Securities					

LEA : 116496503 Shamokin Area SD

Printed 3/28/2019 8:52:54 AM

0045 Loans Received (Paid)

Net Cash Prov By (Used for) Investing Activities	\$17,064	\$17,064
---	-----------------	-----------------

LEA : 116496503 Shamokin Area SD

Printed 3/28/2019 8:52:54 AM

	Food Service (51)	Child Care Operations (52)	Other Enterprise (58)	TOTAL	Internal Service (60)
Net Increase (Decrease) in Cash Flows	378,753			378,753	
0004 Cash and Cash Equivalents Beginning of Year	1,296,730			1,296,730	
Cash and Cash Equivalents at Year End	\$1,675,483			\$1,675,483	
Reconciliation of Operating Income (Loss) To Net Cash Provided by (Used For) Operating Activities					
0005 Operating Income (Loss) per REP	(1,117,466)			(1,117,466)	
Adjustments					
0051 Depreciation and Net Amortization	44,919			44,919	
0052 Provision for Uncollectible Accounts					
0053 Other Adjustments					
Effect of Changes in Assets, Liabilities, Deferred Outflows and Deferred Inflows					
0054 (Inc) Dec In Accounts Receivable (0120-0150)	47,856			47,856	
0055 Advances to Other Funds (0160)	149,916			149,916	
0056 (Inc) Dec in Inventories (0170)	1,872			1,872	
0057 (Inc) Dec in Prepaid Expenses (0180)					
0058 (Inc) Dec in Other Current or Noncurrent Assets					
0064 Deferred Outflows (0910)					
0059 Inc (Dec) in Accounts Payable (0400-0450)	(4,482)			(4,482)	
0060 Inc (Dec) in Accrued Salaries/Benefits (0461)					
0065 Inc (Dec) in Net Pension Liabilities (0570)					
0066 Inc (Dec) in Other Postemp Benefit Oblig (0560)					
0061 Inc (Dec) in Payroll Deductions/Withholding (0462)					
0062 Inc (Dec) in Unearned Revenue (0480)	(2,171)			(2,171)	
0063 Inc (Dec) in Other Current or Noncurrent Liabilities					
0067 Deferred Inflows (0950)					
Total Adjustments	\$237,910			\$237,910	
Cash Provided By (Used for) Total	(\$879,556)			(\$879,556)	

COMBINED STATEMENT OF CASH FLOWS
SCHEDULE OF NONCASH INVESTING, CAPITAL, AND FINANCING ACTIVITIES

Explanation of Transaction and Balance Sheet Effect	Amount
Total	

LEA : 116496503 Shamokin Area SD

Printed 3/28/2019 8:52:55 AM

Amounts Expressed in Whole Dollars	<u>Private Purpose Trust</u> <u>(71)</u>	<u>Investment Trust</u> <u>(72)</u>	<u>Pension Trust</u> <u>(73)</u>	<u>Activity</u> <u>(81)</u>
Assets And Deferred Outflows Of Resources				
Assets				
0100 Cash and Cash Equivalents	63,179			168,896
0110 Investments				
0130 Due From Other Funds				
0147 Due from Component Unit				
0150 Other Receivables				
0170 Inventories				
0180 Prepaid Expenses (Expenditures)				
0190 Other Current Assets				
0220 Buildings and Building Improvements (Net)				
0230 Machinery, Equipment and Furniture (Net)				
Total Assets	\$63,179			\$168,896
0910 Deferred Outflows of Resources				
Total Assets And Deferred Outflows Of Resources	\$63,179			\$168,896

LEA : 116496503 Shamokin Area SD

Printed 3/28/2019 8:52:55 AM

Amounts Expressed in Whole Dollars		<u>Other Agency</u> <u>(89)</u>	<u>Discrete Component Units</u> <u>(98)</u>	<u>Discrete Component Units</u> <u>(99)</u>	<u>Total Fiduciary Funds</u>
Assets And Deferred Outflows Of Resources					
Assets					
0100	Cash and Cash Equivalents				232,075
0110	Investments				
0130	Due From Other Funds				
0147	Due from Component Unit				
0150	Other Receivables				
0170	Inventories				
0180	Prepaid Expenses (Expenditures)				
0190	Other Current Assets				
0220	Buildings and Building Improvements (Net)				
0230	Machinery, Equipment and Furniture (Net)				
Total Assets					\$232,075
0910	Deferred Outflows of Resources				
Total Assets And Deferred Outflows Of Resources					\$232,075

LEA : 116496503 Shamokin Area SD

Printed 3/28/2019 8:52:55 AM

Amounts Expressed in Whole Dollars	<u>Private Purpose Trust</u> <u>(71)</u>	<u>Investment Trust</u> <u>(72)</u>	<u>Pension Trust</u> <u>(73)</u>	<u>Activity</u> <u>(81)</u>
Liabilities, Deferred Inflows Of Resources And Net Position				
Liabilities				
0400 Due to Other Funds				
0411 Due to Other Governments				
0412 Due to Primary Government				
0413 Due to Component Unit				
0420 Accounts Payable				
0430 Contracts Payable				
0450 Short-Term Payables				
0461 Accrued Salaries and Benefits				
0462 Payroll Deductions and Withholding				
0480 Unearned Revenues				
0490 Other Current Liabilities				168,896
Total Liabilities				\$168,896
0950 Deferred Inflows of Resources				
Net Position				
0791 Net Investment in Capital Assets				
0009 Restricted Net Position (0792 – 0798)				
0799 Unrestricted Net Position	63,179			
Total Net Position	\$63,179			
Total Liabilities, Deferred Inflows Of Resources And Net Position	\$63,179			\$168,896

LEA : 116496503 Shamokin Area SD

Printed 3/28/2019 8:52:55 AM

Amounts Expressed in Whole Dollars

<u>Other Agency</u>	<u>Discrete Component Units</u>	<u>Discrete Component Units</u>	<u>Total Fiduciary Funds</u>
(89)	(98)	(99)	

Liabilities, Deferred Inflows Of Resources And Net Position

Liabilities

0400	Due to Other Funds			
0411	Due to Other Governments			
0412	Due to Primary Government			
0413	Due to Component Unit			
0420	Accounts Payable			
0430	Contracts Payable			
0450	Short-Term Payables			
0461	Accrued Salaries and Benefits			
0462	Payroll Deductions and Withholding			
0480	Unearned Revenues			
0490	Other Current Liabilities			168,896
Total Liabilities				\$168,896

0950 Deferred Inflows of Resources

Net Position

0791	Net Investment in Capital Assets			
0009	Restricted Net Position (0792 – 0798)			
0799	Unrestricted Net Position			63,179
Total Net Position				\$63,179
Total Liabilities, Deferred Inflows Of Resources And Net Position				\$232,075

LEA : 116496503 Shamokin Area SD

Printed 3/28/2019 8:52:56 AM

Amounts Expressed in Whole Dollars	<u>Private Purpose Trust</u> <u>(71)</u>	<u>Investment Trust</u> <u>(72)</u>	<u>Pension Trust</u> <u>(73)</u>	<u>Discrete Component</u> <u>Units</u> <u>(98)</u>	<u>Discrete Component</u> <u>Units</u> <u>(99)</u>	<u>Total Fiduciary</u> <u>Funds</u>
Additions						
0091 Gifts and Contributions	6,148					6,148
0092 Other Additions	6					6
Deductions						
0093 Scholarships Awarded	4,850					4,850
0094 Other Deductions						
Change In Net Position	\$1,304					\$1,304
0006 Net Position – Beginning of Fiscal Year	61,874					61,874
0007 Net Position Held in Trust for Pension Benefits						
Net Position - End of Fiscal Year	\$63,178					\$63,178

LEA : 116496503 Shamokin Area SD

General Fund (10)

Printed 3/28/2019 8:52:56 AM

Page - 1 of 4

	Revenue Reported In Current Year	Current Year Tax Accrual	Prior Year Tax Accrual	Taxes Collected In Current Year
Revenue from Local Sources				
6111 Current Real Estate Taxes	2,722,076.71			2,722,076.71
6113 Public Utility Realty Taxes	5,317.82			5,317.82
6114 Payments in Lieu of Current Taxes - State / Local	37,104.69			37,104.69
6120 Current Per Capita Taxes, Section 679	30,996.39			30,996.39
6141 Current Act 511 Per Capita Taxes	35,287.00			35,287.00
6143 Current Act 511 Local Services Taxes	26,780.03			26,780.03
6151 Current Act 511 Earned Income Taxes	1,400,033.63			1,400,033.63
6152 Current Act 511 Occupation Taxes	412,786.40			412,786.40
6153 Current Act 511 Real Estate Transfer Taxes	80,798.08			80,798.08
6155 Current Act 511 Business Privilege Taxes	234,426.19			234,426.19
6411 Delinquent Real Estate Taxes	464,677.28			464,677.28
6420 Delinquent Per Capita Taxes, Section 679	29,345.56			29,345.56
6451 Delinquent Act 511 Earned Income Taxes	5,524.85			5,524.85
6459 Delinquent Act 511 Taxes, Other Proportional Assessments	274,566.76			274,566.76
6500 Earnings on Investments	88,599.05			
6700 Revenues from LEA Activities	69,045.98			
6832 Federal IDEA Revenue Received as Pass Through	490,095.60			
6910 Rentals	6,164.95			
6920 Contributions and Donations from Private Sources	11,190.50			
6942 Summer School Tuition	945.00			
6944 Receipts from Other LEAs in Pennsylvania - Education	8,165.08			
6949 Other Tuition from Patrons	75,211.95			
6969 All Other Services Provided Other Governments	6,548.70			
6991 Refunds of a Prior Year Expenditure	59,982.44			
6999 Other Revenues Not Specified Above	7,681.53			
TOTAL Revenue from Local Sources	\$6,583,352.17			\$5,759,721.39

	Revenue Reported In Current Year			
Revenue from State Sources				
7110 Basic Education Funding	12,441,910.77			
7160 Tuition for Orphans Subsidy	24,037.34			
7271 Special Education funds for School-Aged Pupils	1,687,902.00			
7292 Pre-K Counts	340,000.00			
7299 Program Revenues Not Listed Previously in the 7200 Series	81.45			
7311 Pupil Transportation Subsidy	775,203.17			
7312 Nonpublic and Charter School Pupil Transportation Subsidy	103,565.00			
7320 Rental and Sinking Fund Payments / Building Reimbursement Subsidy	428,298.56			
7330 Health Services (Medical, Dental, Nurse, Act 25)	48,945.77			
7340 State Property Tax Reduction Allocation	351,729.26			
7505 Ready to Learn Block Grant	514,641.00			
7810 State Share of Social Security and Medicare Taxes	604,710.93			
7820 State Share of Retirement Contributions	2,756,045.41			
7990 Other Technology Grants	2,224.05			
TOTAL Revenue from State Sources	\$20,079,294.71			

	Revenue Reported In Current Year			
<u>Revenue from Federal Sources</u>				
8514 NCLB, Title I - Improving the Academic Achievement of the Disadvantaged	760,933.49			
8515 NCLB, Title II - Preparing, Training and Recruiting High Quality Teachers and Principals	136,109.70			
8517 NCLB, Title IV - 21St Century Schools	53,014.74			
8733 ARRA - Qualified Zone Academy Bonds (QZAB)	194,905.40			
8810 School-Based Access Medicaid Reimbursement Program (SBAP) Reimbursements (Access)	62,506.00			
8820 Medical Assistance Reimbursement for Administrative Claiming (Quarterly) Program	23,235.65			
TOTAL Revenue from Federal Sources	\$1,230,704.98			

				Revenue Reported In Current Year	
<u>Other Financing Sources</u>					
9990	Insurance Recoveries			32,278.49	
TOTAL Other Financing Sources				\$32,278.49	
TOTAL FROM ALL SOURCES				\$27,925,630.35	\$5,759,721.39

Revenue from Local Sources	6,583,352.17
Revenue from State Sources	20,079,294.71
Revenue from Federal Sources	1,230,704.98
Other Financing Sources	32,278.49
TOTAL FROM ALL SOURCES	\$27,925,630.35

LEA : 116496503 Shamokin Area SD

Printed 3/28/2019 8:52:59 AM

General Fund (10)

1000 Instruction	Total
100 <u>Personnel Services – Salaries</u>	
100 Personnel Services – Salaries	8,552,556.22
Total Personnel Services – Salaries	\$8,552,556.22
200 <u>Personnel Services – Employee Benefits</u>	
210 Group Insurance – Contracted Provider	2,781,327.24
220 Social Security Contributions	642,068.35
230 PSERS Retirement Contributions	2,773,031.49
250 Unemployment Compensation	15,604.33
260 Workers' Compensation	76,978.87
270 Group Insurance – Self-Insurance	113,284.11
Total Personnel Services – Employee Benefits	\$6,402,294.39
300 <u>Purchased Professional and Technical Services</u>	
322 Professional Educational Services – Ius	518,896.97
323 Professional Educational Services – Other Educational Agencies	171,570.00
324 Professional Educational Services – Employee Training and Development Services	3,256.00
330 Other Professional Services	195,617.50
340 Technical Services	500.00
Total Purchased Professional and Technical Services	\$889,840.47
400 <u>Purchased Property Services</u>	
410 Cleaning Services	866.00
430 Repairs and Maintenance Services	4,479.00
440 Rentals	9,727.58
490 Other Purchased Property Services	1,077.00
Total Purchased Property Services	\$16,149.58
500 <u>Other Purchased Services</u>	
510 Student Transportation Services	11,897.77
520 Insurance – General	2,516.80
530 Communications	1,724.78
550 Printing and Binding	1,046.73
561 Tuition To Other School Districts Within the State	173,738.68
562 Tuition To Pennsylvania Charter Schools	1,382,709.42
564 Tuition To Career and Technology Centers	851,942.48
567 Tuition To Approved Private Schools (APS) and PA Chartered Schools for the Deaf and Blind	39.63
568 Tuition To Private Residential Rehabilitative Institutions (PRRI) [In-State] and Detention Centers	224,803.85
569 Tuition – Other	237,035.00
580 Travel	1,272.60
Total Other Purchased Services	\$2,888,727.74
600 <u>Supplies</u>	
610 General Supplies	230,865.27
630 Food	12,285.00
640 Books and Periodicals	149,097.75
650 Supplies & Fees – Technology Related	96,777.15
Total Supplies	\$489,025.17

LEA : 116496503 Shamokin Area SD

Printed 3/28/2019 8:52:59 AM

General Fund (10)		
1000 Instruction		<u>Total</u>
700 <u>Property</u>		
752 Capital Equipment – Original and Additional	8,012.21	
756 Capitalized Technology Hardware and Equipment– Original	69,376.95	
Total Property	\$77,389.16	
800 <u>Other Objects</u>		
810 Dues and Fees	4,722.70	
Total Other Objects	\$4,722.70	
Total 1000 Instruction	\$19,320,705.43	

LEA : 116496503 Shamokin Area SD

Printed 3/28/2019 8:52:59 AM

General Fund (10)

1100 Regular Programs – Elementary / Secondary	Elementary	Secondary	Federal	Total
100 Personnel Services – Salaries				
100 Personnel Services – Salaries	2,879,006.15	2,655,164.52	523,037.24	6,057,207.91
Total Personnel Services – Salaries	\$2,879,006.15	\$2,655,164.52	\$523,037.24	\$6,057,207.91
200 Personnel Services – Employee Benefits				
210 Group Insurance – Contracted Provider	1,054,205.90	831,072.64	151,975.75	2,037,254.29
220 Social Security Contributions	215,716.59	199,107.54	39,230.23	454,054.36
230 PSERS Retirement Contributions	933,079.97	857,979.93	170,307.46	1,961,367.36
250 Unemployment Compensation		15,604.33		15,604.33
260 Workers' Compensation	25,914.03	23,897.10	4,707.94	54,519.07
270 Group Insurance – Self-Insurance	60,000.00	41,284.11		101,284.11
Total Personnel Services – Employee Benefits	\$2,288,916.49	\$1,968,945.65	\$366,221.38	\$4,624,083.52
300 Purchased Professional and Technical Services				
323 Professional Educational Services – Other Educational Agencies		160,170.00		160,170.00
324 Professional Educational Services – Employee Training and Development Services		165.00	350.00	515.00
330 Other Professional Services	910.00			910.00
340 Technical Services	200.00	300.00		500.00
Total Purchased Professional and Technical Services	\$1,110.00	\$160,635.00	\$350.00	\$162,095.00
400 Purchased Property Services				
410 Cleaning Services		866.00		866.00
430 Repairs and Maintenance Services	392.00	2,322.00		2,714.00
440 Rentals	3,906.76	783.00		4,689.76
Total Purchased Property Services	\$4,298.76	\$3,971.00		\$8,269.76
500 Other Purchased Services				
510 Student Transportation Services	1,505.14	5,795.14		7,300.28
530 Communications	29.40	1,264.44	108.83	1,402.67
550 Printing and Binding	563.58	483.15		1,046.73
561 Tuition To Other School Districts Within the State		41,025.22		41,025.22
562 Tuition To Pennsylvania Charter Schools		1,382,709.42		1,382,709.42
568 Tuition To Private Residential Rehabilitative Institutions (PRRI) [In-State] and Detention Centers	1,200.00	2,686.80		3,886.80
580 Travel	161.54	54.38	708.11	924.03
Total Other Purchased Services	\$3,459.66	\$1,434,018.55	\$816.94	\$1,438,295.15
600 Supplies				
610 General Supplies	74,672.53	79,563.14	(1,375.64)	152,860.03
640 Books and Periodicals	62,251.36	71,120.46	569.65	133,941.47
650 Supplies & Fees – Technology Related	4,435.24	39,176.76	44,025.07	87,637.07
Total Supplies	\$141,359.13	\$189,860.36	\$43,219.08	\$374,438.57
800 Other Objects				
810 Dues and Fees		213.30		213.30
Total Other Objects		\$213.30		\$213.30
Total 1100 Regular Programs – Elementary / Secondary	\$5,318,150.19	\$6,412,808.38	\$933,644.64	\$12,664,603.21

LEA : 116496503 Shamokin Area SD

Printed 3/28/2019 8:52:59 AM

General Fund (10)

1110 Regular Programs	Elementary	Secondary	Federal	Total
100 <u>Personnel Services – Salaries</u>				
100 Personnel Services – Salaries	2,879,006.15	2,655,164.52	38,681.64	5,572,852.31
Total Personnel Services – Salaries	\$2,879,006.15	\$2,655,164.52	\$38,681.64	\$5,572,852.31
200 <u>Personnel Services – Employee Benefits</u>				
210 Group Insurance – Contracted Provider	1,054,205.90	831,072.64	8,952.21	1,894,230.75
220 Social Security Contributions	215,716.59	199,107.54	2,922.90	417,747.03
230 PSERS Retirement Contributions	933,079.97	857,979.93	12,618.03	1,803,677.93
250 Unemployment Compensation		15,604.33		15,604.33
260 Workers' Compensation	25,914.03	23,897.10	348.66	50,159.79
270 Group Insurance – Self-Insurance	60,000.00	41,284.11		101,284.11
Total Personnel Services – Employee Benefits	\$2,288,916.49	\$1,968,945.65	\$24,841.80	\$4,282,703.94
300 <u>Purchased Professional and Technical Services</u>				
323 Professional Educational Services – Other Educational Agencies		160,170.00		160,170.00
324 Professional Educational Services – Employee Training and Development Services		165.00		165.00
330 Other Professional Services	910.00			910.00
340 Technical Services	200.00	300.00		500.00
Total Purchased Professional and Technical Services	\$1,110.00	\$160,635.00		\$161,745.00
400 <u>Purchased Property Services</u>				
410 Cleaning Services		866.00		866.00
430 Repairs and Maintenance Services	392.00	2,322.00		2,714.00
440 Rentals	3,906.76	783.00		4,689.76
Total Purchased Property Services	\$4,298.76	\$3,971.00		\$8,269.76
500 <u>Other Purchased Services</u>				
510 Student Transportation Services	1,505.14	5,795.14		7,300.28
530 Communications	29.40	1,264.44		1,293.84
550 Printing and Binding	563.58	483.15		1,046.73
561 Tuition To Other School Districts Within the State		41,025.22		41,025.22
562 Tuition To Pennsylvania Charter Schools		1,382,709.42		1,382,709.42
568 Tuition To Private Residential Rehabilitative Institutions (PRRI) [In-State] and Detention Centers	1,200.00	2,686.80		3,886.80
580 Travel	161.54	54.38	254.39	470.31
Total Other Purchased Services	\$3,459.66	\$1,434,018.55	\$254.39	\$1,437,732.60
600 <u>Supplies</u>				
610 General Supplies	74,672.53	79,563.14	119.36	154,355.03
640 Books and Periodicals	62,251.36	71,120.46	20.52	133,392.34
650 Supplies & Fees – Technology Related	4,435.24	39,176.76	43,268.07	86,880.07
Total Supplies	\$141,359.13	\$189,860.36	\$43,407.95	\$374,627.44
800 <u>Other Objects</u>				
810 Dues and Fees		213.30		213.30
Total Other Objects		\$213.30		\$213.30
Total 1110 Regular Programs	\$5,318,150.19	\$6,412,808.38	\$107,185.78	\$11,838,144.35

LEA : 116496503 Shamokin Area SD

Printed 3/28/2019 8:52:59 AM

General Fund (10)				
1190 Federally-Funded Regular Programs	Elementary	Secondary	Federal	Total
100 Personnel Services – Salaries				
100 Personnel Services – Salaries			484,355.60	484,355.60
Total Personnel Services – Salaries			\$484,355.60	\$484,355.60
200 Personnel Services – Employee Benefits				
210 Group Insurance – Contracted Provider			143,023.54	143,023.54
220 Social Security Contributions			36,307.33	36,307.33
230 PSERS Retirement Contributions			157,689.43	157,689.43
260 Workers' Compensation			4,359.28	4,359.28
Total Personnel Services – Employee Benefits			\$341,379.58	\$341,379.58
300 Purchased Professional and Technical Services				
324 Professional Educational Services – Employee Training and Development Services			350.00	350.00
Total Purchased Professional and Technical Services			\$350.00	\$350.00
500 Other Purchased Services				
530 Communications			108.83	108.83
580 Travel			453.72	453.72
Total Other Purchased Services			\$562.55	\$562.55
600 Supplies				
610 General Supplies			(1,495.00)	(1,495.00)
640 Books and Periodicals			549.13	549.13
650 Supplies & Fees – Technology Related			757.00	757.00
Total Supplies			(\$188.87)	(\$188.87)
Total 1190 Federally-Funded Regular Programs			\$826,458.86	\$826,458.86

LEA : 116496503 Shamokin Area SD

Printed 3/28/2019 8:52:59 AM

General Fund (10)				
1200 Special Programs – Elementary / Secondary	<u>Elementary</u>	<u>Secondary</u>	<u>Federal</u>	<u>Total</u>
100 Personnel Services – Salaries				
100 Personnel Services – Salaries	588,420.25	990,508.08	280,797.07	1,859,725.40
Total Personnel Services – Salaries	\$588,420.25	\$990,508.08	\$280,797.07	\$1,859,725.40
200 Personnel Services – Employee Benefits				
210 Group Insurance – Contracted Provider	190,603.10	283,202.88	101,095.76	574,901.74
220 Social Security Contributions	44,415.27	74,607.30	21,129.92	140,152.49
230 PSERS Retirement Contributions	191,256.59	321,968.16	91,455.71	604,680.46
260 Workers' Compensation	5,296.09	8,915.52	2,527.33	16,738.94
270 Group Insurance – Self-Insurance	6,000.00	6,000.00		12,000.00
Total Personnel Services – Employee Benefits	\$437,571.05	\$694,693.86	\$216,208.72	\$1,348,473.63
300 Purchased Professional and Technical Services				
322 Professional Educational Services – lus	17,329.81	473,594.76		490,924.57
330 Other Professional Services	193,907.50	800.00		194,707.50
Total Purchased Professional and Technical Services	\$211,237.31	\$474,394.76		\$685,632.07
400 Purchased Property Services				
440 Rentals		5,037.82		5,037.82
490 Other Purchased Property Services		1,077.00		1,077.00
Total Purchased Property Services		\$6,114.82		\$6,114.82
500 Other Purchased Services				
510 Student Transportation Services	568.98	912.34	2,848.12	4,329.44
530 Communications	20.03	302.08		322.11
561 Tuition To Other School Districts Within the State	38,340.68	86,262.93		124,603.61
567 Tuition To Approved Private Schools (APS) and PA Chartered Schools for the Deaf and Blind		39.63		39.63
568 Tuition To Private Residential Rehabilitative Institutions (PRRI) [In-State] and Detention Centers	24,215.84	83,858.77	4,134.24	112,208.85
569 Tuition – Other	186,185.00	50,850.00		237,035.00
580 Travel		237.41		237.41
Total Other Purchased Services	\$249,330.53	\$222,463.16	\$6,982.36	\$478,776.05
600 Supplies				
610 General Supplies	4,605.41	4,381.86	3,942.45	12,929.72
630 Food			290.70	290.70
640 Books and Periodicals	13,082.88	1,308.80		14,391.68
650 Supplies & Fees – Technology Related	4,026.54	2,418.54	2,275.00	8,720.08
Total Supplies	\$21,714.83	\$8,109.20	\$6,508.15	\$36,332.18
700 Property				
752 Capital Equipment – Original and Additional			2,328.75	2,328.75
756 Capitalized Technology Hardware and Equipment– Original			35,059.00	35,059.00
Total Property			\$37,387.75	\$37,387.75
800 Other Objects				
810 Dues and Fees	253.00	595.00		848.00
Total Other Objects	\$253.00	\$595.00		\$848.00
Total 1200 Special Programs – Elementary / Secondary	\$1,508,526.97	\$2,396,878.88	\$547,884.05	\$4,453,289.90

LEA : 116496503 Shamokin Area SD

Printed 3/28/2019 8:52:59 AM

General Fund (10)				
1210 Life Skills Support	<u>Elementary</u>	<u>Secondary</u>	<u>Federal</u>	<u>Total</u>
100 <u>Personnel Services – Salaries</u>				
100 Personnel Services – Salaries	137,260.19	144,015.94	114,083.90	395,360.03
Total Personnel Services – Salaries	\$137,260.19	\$144,015.94	\$114,083.90	\$395,360.03
200 <u>Personnel Services – Employee Benefits</u>				
210 Group Insurance – Contracted Provider	49,290.65	37,128.09	35,772.78	122,191.52
220 Social Security Contributions	10,369.04	10,864.74	8,626.86	29,860.64
230 PSERS Retirement Contributions	44,705.82	46,580.35	37,157.17	128,443.34
260 Workers' Compensation	1,235.33	1,296.19	1,026.80	3,558.32
270 Group Insurance – Self-Insurance		6,000.00		6,000.00
Total Personnel Services – Employee Benefits	\$105,600.84	\$101,869.37	\$82,583.61	\$290,053.82
300 <u>Purchased Professional and Technical Services</u>				
322 Professional Educational Services – lus		207,467.69		207,467.69
Total Purchased Professional and Technical Services		\$207,467.69		\$207,467.69
500 <u>Other Purchased Services</u>				
510 Student Transportation Services	150.05	118.75		268.80
Total Other Purchased Services	\$150.05	\$118.75		\$268.80
600 <u>Supplies</u>				
610 General Supplies	137.29	214.04		351.33
640 Books and Periodicals		152.85		152.85
Total Supplies	\$137.29	\$366.89		\$504.18
700 <u>Property</u>				
752 Capital Equipment – Original and Additional			2,328.75	2,328.75
Total Property			\$2,328.75	\$2,328.75
Total 1210 Life Skills Support	\$243,148.37	\$453,838.64	\$198,996.26	\$895,983.27

LEA : 116496503 Shamokin Area SD

Printed 3/28/2019 8:52:59 AM

General Fund (10)				
1220 Sensory Support	<u>Elementary</u>	<u>Secondary</u>	<u>Federal</u>	<u>Total</u>
100 <u>Personnel Services – Salaries</u>				
100 Personnel Services – Salaries		149,832.48		149,832.48
Total Personnel Services – Salaries		\$149,832.48		\$149,832.48
200 <u>Personnel Services – Employee Benefits</u>				
210 Group Insurance – Contracted Provider		43,199.49		43,199.49
220 Social Security Contributions		11,250.18		11,250.18
230 PSERS Retirement Contributions		48,800.35		48,800.35
260 Workers' Compensation		1,348.56		1,348.56
Total Personnel Services – Employee Benefits		\$104,598.58		\$104,598.58
300 <u>Purchased Professional and Technical Services</u>				
322 Professional Educational Services – Ius	15,913.14	85,163.47		101,076.61
330 Other Professional Services		200.00		200.00
Total Purchased Professional and Technical Services	\$15,913.14	\$85,363.47		\$101,276.61
500 <u>Other Purchased Services</u>				
530 Communications	20.03			20.03
561 Tuition To Other School Districts Within the State	2,958.02			2,958.02
Total Other Purchased Services	\$2,978.05			\$2,978.05
600 <u>Supplies</u>				
610 General Supplies	2,150.44			2,150.44
Total Supplies	\$2,150.44			\$2,150.44
800 <u>Other Objects</u>				
810 Dues and Fees	253.00			253.00
Total Other Objects	\$253.00			\$253.00
Total 1220 Sensory Support	\$21,294.63	\$339,794.53		\$361,089.16

LEA : 116496503 Shamokin Area SD

Printed 3/28/2019 8:52:59 AM

General Fund (10)				
1230 Emotional Support	<u>Elementary</u>	<u>Secondary</u>	<u>Federal</u>	<u>Total</u>
100 <u>Personnel Services – Salaries</u>				
100 Personnel Services – Salaries	123,840.69	223,896.87	54,767.50	402,505.06
Total Personnel Services – Salaries	\$123,840.69	\$223,896.87	\$54,767.50	\$402,505.06
200 <u>Personnel Services – Employee Benefits</u>				
210 Group Insurance – Contracted Provider	46,723.24	70,461.76	7,149.28	124,334.28
220 Social Security Contributions	9,370.89	16,844.06	4,130.67	30,345.62
230 PSERS Retirement Contributions	40,294.34	72,871.27	17,837.71	131,003.32
260 Workers' Compensation	1,114.92	2,015.42	492.95	3,623.29
Total Personnel Services – Employee Benefits	\$97,503.39	\$162,192.51	\$29,610.61	\$289,306.51
300 <u>Purchased Professional and Technical Services</u>				
322 Professional Educational Services – Ius		90,205.29		90,205.29
330 Other Professional Services	193,907.50			193,907.50
Total Purchased Professional and Technical Services	\$193,907.50	\$90,205.29		\$284,112.79
500 <u>Other Purchased Services</u>				
510 Student Transportation Services	132.65	44.13		176.78
561 Tuition To Other School Districts Within the State	33,174.34	12,331.37		45,505.71
568 Tuition To Private Residential Rehabilitative Institutions (PRRI) [In-State] and Detention Centers	585.00	28,889.68	2,067.12	31,541.80
569 Tuition – Other	186,185.00	50,850.00		237,035.00
Total Other Purchased Services	\$220,076.99	\$92,115.18	\$2,067.12	\$314,259.29
600 <u>Supplies</u>				
610 General Supplies	684.18	248.08	300.34	1,232.60
Total Supplies	\$684.18	\$248.08	\$300.34	\$1,232.60
Total 1230 Emotional Support	\$636,012.75	\$568,657.93	\$86,745.57	\$1,291,416.25

LEA : 116496503 Shamokin Area SD

Printed 3/28/2019 8:52:59 AM

General Fund (10)

1240 Academic Support

	Elementary	Secondary	Federal	Total
100 <u>Personnel Services – Salaries</u>				
100 Personnel Services – Salaries	246,938.04	453,718.73	2,100.50	702,757.27
Total Personnel Services – Salaries	\$246,938.04	\$453,718.73	\$2,100.50	\$702,757.27
200 <u>Personnel Services – Employee Benefits</u>				
210 Group Insurance – Contracted Provider	69,543.35	124,803.64		194,346.99
220 Social Security Contributions	18,592.82	34,220.93	160.69	52,974.44
230 PSERS Retirement Contributions	80,076.26	147,513.63	684.14	228,274.03
260 Workers' Compensation	2,222.55	4,083.87	18.91	6,325.33
270 Group Insurance – Self-Insurance	6,000.00			6,000.00
Total Personnel Services – Employee Benefits	\$176,434.98	\$310,622.07	\$863.74	\$487,920.79
300 <u>Purchased Professional and Technical Services</u>				
330 Other Professional Services		600.00		600.00
Total Purchased Professional and Technical Services		\$600.00		\$600.00
400 <u>Purchased Property Services</u>				
440 Rentals		5,037.82		5,037.82
490 Other Purchased Property Services		1,077.00		1,077.00
Total Purchased Property Services		\$6,114.82		\$6,114.82
500 <u>Other Purchased Services</u>				
510 Student Transportation Services		101.67		101.67
530 Communications		302.08		302.08
561 Tuition To Other School Districts Within the State	720.00	73,931.56		74,651.56
568 Tuition To Private Residential Rehabilitative Institutions (PRRI) [In-State] and Detention Centers	20,466.14	34,800.09	2,067.12	57,333.35
580 Travel		237.41		237.41
Total Other Purchased Services	\$21,186.14	\$109,372.81	\$2,067.12	\$132,626.07
600 <u>Supplies</u>				
610 General Supplies	921.24	2,651.46	3,642.11	7,214.81
640 Books and Periodicals	13,082.88	1,155.95		14,238.83
650 Supplies & Fees – Technology Related	4,026.54	2,418.54	2,275.00	8,720.08
Total Supplies	\$18,030.66	\$6,225.95	\$5,917.11	\$30,173.72
700 <u>Property</u>				
756 Capitalized Technology Hardware and Equipment– Original			35,059.00	35,059.00
Total Property			\$35,059.00	\$35,059.00
800 <u>Other Objects</u>				
810 Dues and Fees		595.00		595.00
Total Other Objects		\$595.00		\$595.00
Total 1240 Academic Support	\$462,589.82	\$887,249.38	\$46,007.47	\$1,395,846.67

LEA : 116496503 Shamokin Area SD

Printed 3/28/2019 8:52:59 AM

General Fund (10)

1241 Learning Support – Public	Elementary	Secondary	Federal	Total
100 <u>Personnel Services – Salaries</u>				
100 Personnel Services – Salaries	246,938.04	453,718.73	2,100.50	702,757.27
Total Personnel Services – Salaries	\$246,938.04	\$453,718.73	\$2,100.50	\$702,757.27
200 <u>Personnel Services – Employee Benefits</u>				
210 Group Insurance – Contracted Provider	69,543.35	124,803.64		194,346.99
220 Social Security Contributions	18,592.82	34,220.93	160.69	52,974.44
230 PSERS Retirement Contributions	80,076.26	147,513.63	684.14	228,274.03
260 Workers' Compensation	2,222.55	4,083.87	18.91	6,325.33
270 Group Insurance – Self-Insurance	6,000.00			6,000.00
Total Personnel Services – Employee Benefits	\$176,434.98	\$310,622.07	\$863.74	\$487,920.79
300 <u>Purchased Professional and Technical Services</u>				
330 Other Professional Services		600.00		600.00
Total Purchased Professional and Technical Services		\$600.00		\$600.00
400 <u>Purchased Property Services</u>				
440 Rentals		5,037.82		5,037.82
490 Other Purchased Property Services		1,077.00		1,077.00
Total Purchased Property Services		\$6,114.82		\$6,114.82
500 <u>Other Purchased Services</u>				
510 Student Transportation Services		101.67		101.67
530 Communications		302.08		302.08
580 Travel		237.41		237.41
Total Other Purchased Services		\$641.16		\$641.16
600 <u>Supplies</u>				
610 General Supplies	853.76	2,651.46	3,642.11	7,147.33
640 Books and Periodicals	13,053.03	1,155.95		14,208.98
650 Supplies & Fees – Technology Related	4,026.54	2,418.54	2,275.00	8,720.08
Total Supplies	\$17,933.33	\$6,225.95	\$5,917.11	\$30,076.39
700 <u>Property</u>				
756 Capitalized Technology Hardware and Equipment– Original			35,059.00	35,059.00
Total Property			\$35,059.00	\$35,059.00
800 <u>Other Objects</u>				
810 Dues and Fees		595.00		595.00
Total Other Objects		\$595.00		\$595.00
Total 1241 Learning Support – Public	\$441,306.35	\$778,517.73	\$43,940.35	\$1,263,764.43

LEA : 116496503 Shamokin Area SD

Printed 3/28/2019 8:52:59 AM

General Fund (10)

1242 Learning Support – PRRI

	<u>Elementary</u>	<u>Secondary</u>	<u>Federal</u>	<u>Total</u>
500 Other Purchased Services				
561 Tuition To Other School Districts Within the State	720.00	73,931.56		74,651.56
568 Tuition To Private Residential Rehabilitative Institutions (PRRI) [In-State] and Detention Centers	20,466.14	34,800.09	2,067.12	57,333.35
Total Other Purchased Services	\$21,186.14	\$108,731.65	\$2,067.12	\$131,984.91
Total 1242 Learning Support – PRRI	\$21,186.14	\$108,731.65	\$2,067.12	\$131,984.91

LEA : 116496503 Shamokin Area SD

Printed 3/28/2019 8:52:59 AM

General Fund (10)				
1243 Gifted Support	<u>Elementary</u>	<u>Secondary</u>	<u>Federal</u>	<u>Total</u>
600 <u>Supplies</u>				
610 General Supplies	67.48			67.48
640 Books and Periodicals	29.85			29.85
Total Supplies	\$97.33			\$97.33
Total 1243 Gifted Support	\$97.33			\$97.33

LEA : 116496503 Shamokin Area SD

Printed 3/28/2019 8:52:59 AM

General Fund (10)

1260 Physical Support

	<u>Elementary</u>	<u>Secondary</u>	<u>Federal</u>	<u>Total</u>
300 <u>Purchased Professional and Technical Services</u>				
322 Professional Educational Services – lus	1,416.67			1,416.67
Total Purchased Professional and Technical Services	\$1,416.67			\$1,416.67
500 <u>Other Purchased Services</u>				
561 Tuition To Other School Districts Within the State	1,488.32			1,488.32
Total Other Purchased Services	\$1,488.32			\$1,488.32
Total 1260 Physical Support	\$2,904.99			\$2,904.99

LEA : 116496503 Shamokin Area SD

Printed 3/28/2019 8:52:59 AM

General Fund (10)				
1270 Multi-Handicapped Support	<u>Elementary</u>	<u>Secondary</u>	<u>Federal</u>	<u>Total</u>
100 <u>Personnel Services – Salaries</u>				
100 Personnel Services – Salaries	80,381.33	19,044.06	109,845.17	209,270.56
Total Personnel Services – Salaries	\$80,381.33	\$19,044.06	\$109,845.17	\$209,270.56
200 <u>Personnel Services – Employee Benefits</u>				
210 Group Insurance – Contracted Provider	25,045.86	7,609.90	58,173.70	90,829.46
220 Social Security Contributions	6,082.52	1,427.39	8,211.70	15,721.61
230 PSERS Retirement Contributions	26,180.17	6,202.56	35,776.69	68,159.42
260 Workers' Compensation	723.29	171.48	988.67	1,883.44
Total Personnel Services – Employee Benefits	\$58,031.84	\$15,411.33	\$103,150.76	\$176,593.93
500 <u>Other Purchased Services</u>				
510 Student Transportation Services	286.28	647.79	626.12	1,560.19
Total Other Purchased Services	\$286.28	\$647.79	\$626.12	\$1,560.19
600 <u>Supplies</u>				
610 General Supplies	712.26	1,268.28		1,980.54
Total Supplies	\$712.26	\$1,268.28		\$1,980.54
Total 1270 Multi-Handicapped Support	\$139,411.71	\$36,371.46	\$213,622.05	\$389,405.22

LEA : 116496503 Shamokin Area SD

Printed 3/28/2019 8:52:59 AM

General Fund (10)				
1290 Special Programs - Other Support	<u>Elementary</u>	<u>Secondary</u>	<u>Federal</u>	<u>Total</u>
300 <u>Purchased Professional and Technical Services</u>				
322 Professional Educational Services – Ius		90,758.31		90,758.31
Total Purchased Professional and Technical Services		\$90,758.31		\$90,758.31
500 <u>Other Purchased Services</u>				
510 Student Transportation Services			2,222.00	2,222.00
567 Tuition To Approved Private Schools (APS) and PA Chartered Schools for the Deaf and Blind		39.63		39.63
568 Tuition To Private Residential Rehabilitative Institutions (PRRI) [In-State] and Detention Centers	3,164.70	20,169.00		23,333.70
Total Other Purchased Services	\$3,164.70	\$20,208.63	\$2,222.00	\$25,595.33
600 <u>Supplies</u>				
630 Food			290.70	290.70
Total Supplies			\$290.70	\$290.70
Total 1290 Special Programs - Other Support	\$3,164.70	\$110,966.94	\$2,512.70	\$116,644.34

LEA : 116496503 Shamokin Area SD

Printed 3/28/2019 8:52:59 AM

General Fund (10)				
1300 Vocational Education	<u>Elementary</u>	<u>Secondary</u>	<u>Federal</u>	<u>Total</u>
100 <u>Personnel Services – Salaries</u>				
100 Personnel Services – Salaries		334,026.56		334,026.56
Total Personnel Services – Salaries		\$334,026.56		\$334,026.56
200 <u>Personnel Services – Employee Benefits</u>				
210 Group Insurance – Contracted Provider		107,866.59		107,866.59
220 Social Security Contributions		25,063.18		25,063.18
230 PSERS Retirement Contributions		108,779.60		108,779.60
260 Workers' Compensation		3,006.16		3,006.16
Total Personnel Services – Employee Benefits		\$244,715.53		\$244,715.53
400 <u>Purchased Property Services</u>				
430 Repairs and Maintenance Services		541.00		541.00
Total Purchased Property Services		\$541.00		\$541.00
500 <u>Other Purchased Services</u>				
564 Tuition To Career and Technology Centers		851,942.48		851,942.48
580 Travel		75.16		75.16
Total Other Purchased Services		\$852,017.64		\$852,017.64
600 <u>Supplies</u>				
610 General Supplies		28,049.44		28,049.44
640 Books and Periodicals		100.10		100.10
Total Supplies		\$28,149.54		\$28,149.54
Total 1300 Vocational Education		\$1,459,450.27		\$1,459,450.27

LEA : 116496503 Shamokin Area SD

Printed 3/28/2019 8:52:59 AM

General Fund (10)				
1400 Other Instructional Programs – Elementary / Secondary	<u>Elementary</u>	<u>Secondary</u>	<u>Federal</u>	<u>Total</u>
100 <u>Personnel Services – Salaries</u>				
100 Personnel Services – Salaries		97,706.50	31,181.25	128,887.75
Total Personnel Services – Salaries		\$97,706.50	\$31,181.25	\$128,887.75
200 <u>Personnel Services – Employee Benefits</u>				
210 Group Insurance – Contracted Provider		24,857.63		24,857.63
220 Social Security Contributions		7,380.34	2,385.67	9,766.01
230 PSERS Retirement Contributions		31,823.29	10,155.88	41,979.17
260 Workers' Compensation		879.42	280.84	1,160.26
Total Personnel Services – Employee Benefits		\$64,940.68	\$12,822.39	\$77,763.07
300 <u>Purchased Professional and Technical Services</u>				
323 Professional Educational Services – Other Educational Agencies		11,400.00		11,400.00
Total Purchased Professional and Technical Services		\$11,400.00		\$11,400.00
500 <u>Other Purchased Services</u>				
561 Tuition To Other School Districts Within the State		8,109.85		8,109.85
568 Tuition To Private Residential Rehabilitative Institutions (PRRI) [In-State] and Detention Centers	25,390.27	83,317.93		108,708.20
Total Other Purchased Services	\$25,390.27	\$91,427.78		\$116,818.05
800 <u>Other Objects</u>				
810 Dues and Fees		800.00		800.00
Total Other Objects		\$800.00		\$800.00
Total 1400 Other Instructional Programs – Elementary / Secondary	\$25,390.27	\$266,274.96	\$44,003.64	\$335,668.87

LEA : 116496503 Shamokin Area SD

Printed 3/28/2019 8:52:59 AM

General Fund (10)

1420 Summer School

	<u>Elementary</u>	<u>Secondary</u>	<u>Federal</u>	<u>Total</u>
100 <u>Personnel Services – Salaries</u>				
100 Personnel Services – Salaries		5,143.00		5,143.00
Total Personnel Services – Salaries		\$5,143.00		\$5,143.00
200 <u>Personnel Services – Employee Benefits</u>				
220 Social Security Contributions		393.45		393.45
230 PSERS Retirement Contributions		1,675.09		1,675.09
260 Workers’ Compensation		46.26		46.26
Total Personnel Services – Employee Benefits		\$2,114.80		\$2,114.80
Total 1420 Summer School		\$7,257.80		\$7,257.80

LEA : 116496503 Shamokin Area SD

Printed 3/28/2019 8:52:59 AM

General Fund (10)				
1430 Homebound Instruction	<u>Elementary</u>	<u>Secondary</u>	<u>Federal</u>	<u>Total</u>
100 <u>Personnel Services – Salaries</u>				
100 Personnel Services – Salaries		2,849.00		2,849.00
Total Personnel Services – Salaries		\$2,849.00		\$2,849.00
200 <u>Personnel Services – Employee Benefits</u>				
220 Social Security Contributions		217.96		217.96
230 PSERS Retirement Contributions		927.91		927.91
260 Workers’ Compensation		25.65		25.65
Total Personnel Services – Employee Benefits		\$1,171.52		\$1,171.52
500 <u>Other Purchased Services</u>				
568 Tuition To Private Residential Rehabilitative Institutions (PRRI) [In-State] and Detention Centers	379.27	633.68		1,012.95
Total Other Purchased Services	\$379.27	\$633.68		\$1,012.95
Total 1430 Homebound Instruction	\$379.27	\$4,654.20		\$5,033.47

LEA : 116496503 Shamokin Area SD

Printed 3/28/2019 8:52:59 AM

General Fund (10)				
1440 Alternative Regular Education Programs	<u>Elementary</u>	<u>Secondary</u>	<u>Federal</u>	<u>Total</u>
100 <u>Personnel Services – Salaries</u>				
100 Personnel Services – Salaries		89,714.50		89,714.50
Total Personnel Services – Salaries		\$89,714.50		\$89,714.50
200 <u>Personnel Services – Employee Benefits</u>				
210 Group Insurance – Contracted Provider		24,857.63		24,857.63
220 Social Security Contributions		6,768.93		6,768.93
230 PSERS Retirement Contributions		29,220.29		29,220.29
260 Workers' Compensation		807.51		807.51
Total Personnel Services – Employee Benefits		\$61,654.36		\$61,654.36
300 <u>Purchased Professional and Technical Services</u>				
323 Professional Educational Services – Other Educational Agencies		11,400.00		11,400.00
Total Purchased Professional and Technical Services		\$11,400.00		\$11,400.00
500 <u>Other Purchased Services</u>				
561 Tuition To Other School Districts Within the State		8,109.85		8,109.85
568 Tuition To Private Residential Rehabilitative Institutions (PRRI) [In-State] and Detention Centers	25,011.00	82,684.25		107,695.25
Total Other Purchased Services	\$25,011.00	\$90,794.10		\$115,805.10
800 <u>Other Objects</u>				
810 Dues and Fees		800.00		800.00
Total Other Objects		\$800.00		\$800.00
Total 1440 Alternative Regular Education Programs	\$25,011.00	\$254,362.96		\$279,373.96

LEA : 116496503 Shamokin Area SD

Printed 3/28/2019 8:52:59 AM

General Fund (10)				
1441 Adjudicated / Court-Placed Programs	<u>Elementary</u>	<u>Secondary</u>	<u>Federal</u>	<u>Total</u>
100 <u>Personnel Services – Salaries</u>				
100 Personnel Services – Salaries		27,092.40		27,092.40
Total Personnel Services – Salaries		\$27,092.40		\$27,092.40
200 <u>Personnel Services – Employee Benefits</u>				
210 Group Insurance – Contracted Provider		5,588.55		5,588.55
220 Social Security Contributions		2,040.60		2,040.60
230 PSERS Retirement Contributions		8,824.01		8,824.01
260 Workers' Compensation		243.87		243.87
Total Personnel Services – Employee Benefits		\$16,697.03		\$16,697.03
300 <u>Purchased Professional and Technical Services</u>				
323 Professional Educational Services – Other Educational Agencies		11,400.00		11,400.00
Total Purchased Professional and Technical Services		\$11,400.00		\$11,400.00
500 <u>Other Purchased Services</u>				
561 Tuition To Other School Districts Within the State		2,523.99		2,523.99
Total Other Purchased Services		\$2,523.99		\$2,523.99
Total 1441 Adjudicated / Court-Placed Programs		\$57,713.42		\$57,713.42

LEA : 116496503 Shamokin Area SD

Printed 3/28/2019 8:52:59 AM

General Fund (10)

1442 Alternative Education Programs	<u>Elementary</u>	<u>Secondary</u>	<u>Federal</u>	<u>Total</u>
100 <u>Personnel Services – Salaries</u>				
100 Personnel Services – Salaries		62,622.10		62,622.10
Total Personnel Services – Salaries		\$62,622.10		\$62,622.10
200 <u>Personnel Services – Employee Benefits</u>				
210 Group Insurance – Contracted Provider		19,269.08		19,269.08
220 Social Security Contributions		4,728.33		4,728.33
230 PSERS Retirement Contributions		20,396.28		20,396.28
260 Workers' Compensation		563.64		563.64
Total Personnel Services – Employee Benefits		\$44,957.33		\$44,957.33
500 <u>Other Purchased Services</u>				
561 Tuition To Other School Districts Within the State		5,585.86		5,585.86
568 Tuition To Private Residential Rehabilitative Institutions (PRRI) [In-State] and Detention Centers	25,011.00	82,684.25		107,695.25
Total Other Purchased Services	\$25,011.00	\$88,270.11		\$113,281.11
800 <u>Other Objects</u>				
810 Dues and Fees		800.00		800.00
Total Other Objects		\$800.00		\$800.00
Total 1442 Alternative Education Programs	\$25,011.00	\$196,649.54		\$221,660.54

LEA : 116496503 Shamokin Area SD

Printed 3/28/2019 8:52:59 AM

General Fund (10)

1450 Instructional Programs Outside the Established School Day	<u>Elementary</u>	<u>Secondary</u>	<u>Federal</u>	<u>Total</u>
100 <u>Personnel Services – Salaries</u>				
100 Personnel Services – Salaries			31,181.25	31,181.25
Total Personnel Services – Salaries			\$31,181.25	\$31,181.25
200 <u>Personnel Services – Employee Benefits</u>				
220 Social Security Contributions			2,385.67	2,385.67
230 PSERS Retirement Contributions			10,155.88	10,155.88
260 Workers’ Compensation			280.84	280.84
Total Personnel Services – Employee Benefits			\$12,822.39	\$12,822.39
Total 1450 Instructional Programs Outside the Established School Day			\$44,003.64	\$44,003.64

LEA : 116496503 Shamokin Area SD

Printed 3/28/2019 8:52:59 AM

General Fund (10)

1500 Nonpublic School Programs

Elementary Secondary Federal Total

300 Purchased Professional and Technical Services

322 Professional Educational Services – Ius 27,972.40 27,972.40

324 Professional Educational Services – Employee Training and Development Services 2,691.00 2,691.00

Total Purchased Professional and Technical Services		\$30,663.40	\$30,663.40
Total 1500 Nonpublic School Programs		\$30,663.40	\$30,663.40

LEA : 116496503 Shamokin Area SD

Printed 3/28/2019 8:52:59 AM

General Fund (10)				
1800 Pre-Kindergarten	<u>Elementary</u>	<u>Secondary</u>	<u>Federal</u>	<u>Total</u>
100 <u>Personnel Services – Salaries</u>				
100 Personnel Services – Salaries				172,708.60
Total Personnel Services – Salaries				\$172,708.60
200 <u>Personnel Services – Employee Benefits</u>				
210 Group Insurance – Contracted Provider				36,446.99
220 Social Security Contributions				13,032.31
230 PSERS Retirement Contributions				56,224.90
260 Workers' Compensation				1,554.44
Total Personnel Services – Employee Benefits				\$107,258.64
300 <u>Purchased Professional and Technical Services</u>				
324 Professional Educational Services – Employee Training and Development Services				50.00
Total Purchased Professional and Technical Services				\$50.00
400 <u>Purchased Property Services</u>				
430 Repairs and Maintenance Services				1,224.00
Total Purchased Property Services				\$1,224.00
500 <u>Other Purchased Services</u>				
510 Student Transportation Services				268.05
520 Insurance – General				2,516.80
580 Travel				36.00
Total Other Purchased Services				\$2,820.85
600 <u>Supplies</u>				
610 General Supplies				37,026.08
630 Food				11,994.30
640 Books and Periodicals				664.50
650 Supplies & Fees – Technology Related				420.00
Total Supplies				\$50,104.88
700 <u>Property</u>				
752 Capital Equipment – Original and Additional				5,683.46
756 Capitalized Technology Hardware and Equipment– Original				34,317.95
Total Property				\$40,001.41
800 <u>Other Objects</u>				
810 Dues and Fees				2,861.40
Total Other Objects				\$2,861.40
Total 1800 Pre-Kindergarten				\$377,029.78

LEA : 116496503 Shamokin Area SD

Printed 3/28/2019 8:52:59 AM

General Fund (10)				
1801 Pre-K Instruction	<u>Elementary</u>	<u>Secondary</u>	<u>Federal</u>	<u>Total</u>
100 <u>Personnel Services – Salaries</u>				
100 Personnel Services – Salaries				172,708.60
Total Personnel Services – Salaries				\$172,708.60
200 <u>Personnel Services – Employee Benefits</u>				
210 Group Insurance – Contracted Provider				36,446.99
220 Social Security Contributions				13,032.31
230 PSERS Retirement Contributions				56,224.90
260 Workers' Compensation				1,554.44
Total Personnel Services – Employee Benefits				\$107,258.64
300 <u>Purchased Professional and Technical Services</u>				
324 Professional Educational Services – Employee Training and Development Services				50.00
Total Purchased Professional and Technical Services				\$50.00
500 <u>Other Purchased Services</u>				
510 Student Transportation Services				268.05
520 Insurance – General				2,516.80
580 Travel				36.00
Total Other Purchased Services				\$2,820.85
600 <u>Supplies</u>				
610 General Supplies				30,921.08
640 Books and Periodicals				664.50
650 Supplies & Fees – Technology Related				420.00
Total Supplies				\$32,005.58
700 <u>Property</u>				
756 Capitalized Technology Hardware and Equipment– Original				34,317.95
Total Property				\$34,317.95
800 <u>Other Objects</u>				
810 Dues and Fees				2,861.40
Total Other Objects				\$2,861.40
Total 1801 Pre-K Instruction				\$352,023.02

LEA : 116496503 Shamokin Area SD

Printed 3/28/2019 8:52:59 AM

General Fund (10)				
1803 Pre-K Operations and Maintenance	<u>Elementary</u>	<u>Secondary</u>	<u>Federal</u>	<u>Total</u>
400 <u>Purchased Property Services</u>				
430 Repairs and Maintenance Services				1,224.00
Total Purchased Property Services				\$1,224.00
600 <u>Supplies</u>				
610 General Supplies				6,105.00
Total Supplies				\$6,105.00
700 <u>Property</u>				
752 Capital Equipment – Original and Additional				5,683.46
Total Property				\$5,683.46
Total 1803 Pre-K Operations and Maintenance				\$13,012.46

LEA : 116496503 Shamokin Area SD

Printed 3/28/2019 8:52:59 AM

General Fund (10)				
1805 Pre-K Food Services	<u>Elementary</u>	<u>Secondary</u>	<u>Federal</u>	<u>Total</u>
600 <u>Supplies</u>				
630 Food				11,994.30
Total Supplies				\$11,994.30
Total 1805 Pre-K Food Services				\$11,994.30

LEA : 116496503 Shamokin Area SD

Printed 3/28/2019 8:53:01 AM

General Fund (10)

2000 Support Services

Total

100	<u>Personnel Services – Salaries</u>	
100	Personnel Services – Salaries	3,171,934.18
Total Personnel Services – Salaries		\$3,171,934.18
200	<u>Personnel Services – Employee Benefits</u>	
210	Group Insurance – Contracted Provider	1,035,842.56
220	Social Security Contributions	239,462.45
230	PSERS Retirement Contributions	989,610.89
240	Tuition Reimbursement	104,249.84
250	Unemployment Compensation	(85.33)
260	Workers' Compensation	28,640.94
270	Group Insurance – Self-Insurance	59,146.04
291	Other Retirement Plans	20,057.30
Total Personnel Services – Employee Benefits		\$2,476,924.69
300	<u>Purchased Professional and Technical Services</u>	
310	Official / Administrative Services	21,230.91
324	Professional Educational Services – Employee Training and Development Services	20,636.97
330	Other Professional Services	157,616.58
390	Other Purchased Professional and Technical Services	33,562.98
Total Purchased Professional and Technical Services		\$233,047.44
400	<u>Purchased Property Services</u>	
410	Cleaning Services	47,764.44
420	Utility Services	100,221.97
430	Repairs and Maintenance Services	48,800.50
440	Rentals	46,960.77
450	Construction Services	2,850.00
490	Other Purchased Property Services	9,845.00
Total Purchased Property Services		\$256,442.68
500	<u>Other Purchased Services</u>	
513	Contracted Carriers	1,257,646.24
516	Student Transportation Services From the IU	39,823.36
520	Insurance – General	3,220.22
522	Automotive Liability Insurance	17,429.00
523	General Property and Liability Insurance	95,930.20
529	Other Insurance	11,868.45
530	Communications	36,283.99
549	Other Advertising/Public Relations	2,304.59
580	Travel	468.38
Total Other Purchased Services		\$1,464,974.43
600	<u>Supplies</u>	
610	General Supplies	253,800.13
620	Energy	317,768.65
630	Food	1,762.28
640	Books and Periodicals	5,783.43
650	Supplies & Fees – Technology Related	54,224.93

LEA : 116496503 Shamokin Area SD

Printed 3/28/2019 8:53:01 AM

General Fund (10)

2000 Support Services

	<u>Total</u>
Total Supplies	\$633,339.42
700 <u>Property</u>	
752 Capital Equipment – Original and Additional	8,433.60
756 Capitalized Technology Hardware and Equipment – Original	66,431.34
758 Capitalized Technology Software - Original	13,123.89
762 Capitalized Equipment - Replacement	3,015.00
766 Capitalized Technology Hardware and Equipment – Replacement	32,593.95
Total Property	\$123,597.78
800 <u>Other Objects</u>	
810 Dues and Fees	16,992.48
820 Claims and Judgments Against the LEA	20,175.72
Total Other Objects	\$37,168.20
Total 2000 Support Services	\$8,397,428.82

LEA : 116496503 Shamokin Area SD

Printed 3/28/2019 8:53:01 AM

General Fund (10)				
2100 Support Services – Students	<u>Elementary</u>	<u>Secondary</u>	<u>Federal</u>	<u>Total</u>
100 <u>Personnel Services – Salaries</u>				
100 Personnel Services – Salaries	97,204.88	127,331.62	370.00	302,867.19
Total Personnel Services – Salaries	\$97,204.88	\$127,331.62	\$370.00	\$302,867.19
200 <u>Personnel Services – Employee Benefits</u>				
210 Group Insurance – Contracted Provider	23,833.02	45,514.02		84,224.50
220 Social Security Contributions	7,330.52	9,554.47	28.31	22,820.97
230 PSERS Retirement Contributions	31,333.79	41,471.89	120.51	98,292.08
260 Workers' Compensation	875.04	1,145.98	3.33	2,725.88
270 Group Insurance – Self-Insurance		10,000.00		10,000.00
Total Personnel Services – Employee Benefits	\$63,372.37	\$107,686.36	\$152.15	\$218,063.43
500 <u>Other Purchased Services</u>				
580 Travel	84.60			236.97
Total Other Purchased Services	\$84.60			\$236.97
600 <u>Supplies</u>				
610 General Supplies	3,042.34			3,176.02
640 Books and Periodicals	95.09			197.43
Total Supplies	\$3,137.43			\$3,373.45
800 <u>Other Objects</u>				
810 Dues and Fees	210.00			210.00
Total Other Objects	\$210.00			\$210.00
Total 2100 Support Services – Students	\$164,009.28	\$235,017.98	\$522.15	\$524,751.04

LEA : 116496503 Shamokin Area SD

Printed 3/28/2019 8:53:01 AM

General Fund (10)				
2120 Guidance Services	<u>Elementary</u>	<u>Secondary</u>	<u>Federal</u>	<u>Total</u>
100 <u>Personnel Services – Salaries</u>				
100 Personnel Services – Salaries	40,741.00	127,331.62		168,072.62
Total Personnel Services – Salaries	\$40,741.00	\$127,331.62		\$168,072.62
200 <u>Personnel Services – Employee Benefits</u>				
210 Group Insurance – Contracted Provider	75.60	45,514.02		45,589.62
220 Social Security Contributions	3,117.40	9,554.47		12,671.87
230 PSERS Retirement Contributions	12,943.59	41,471.89		54,415.48
260 Workers' Compensation	366.75	1,145.98		1,512.73
270 Group Insurance – Self-Insurance		10,000.00		10,000.00
Total Personnel Services – Employee Benefits	\$16,503.34	\$107,686.36		\$124,189.70
600 <u>Supplies</u>				
610 General Supplies	95.05			95.05
640 Books and Periodicals	95.09			95.09
Total Supplies	\$190.14			\$190.14
Total 2120 Guidance Services	\$57,434.48	\$235,017.98		\$292,452.46

LEA : 116496503 Shamokin Area SD

Printed 3/28/2019 8:53:01 AM

General Fund (10)				
2140 Psychological Services	<u>Elementary</u>	<u>Secondary</u>	<u>Federal</u>	<u>Total</u>
100 <u>Personnel Services – Salaries</u>				
100 Personnel Services – Salaries	56,463.88			56,463.88
Total Personnel Services – Salaries	\$56,463.88			\$56,463.88
200 <u>Personnel Services – Employee Benefits</u>				
210 Group Insurance – Contracted Provider	23,757.42			23,757.42
220 Social Security Contributions	4,213.12			4,213.12
230 PSERS Retirement Contributions	18,390.20			18,390.20
260 Workers' Compensation	508.29			508.29
Total Personnel Services – Employee Benefits	\$46,869.03			\$46,869.03
500 <u>Other Purchased Services</u>				
580 Travel	84.60			84.60
Total Other Purchased Services	\$84.60			\$84.60
600 <u>Supplies</u>				
610 General Supplies	2,947.29			2,947.29
Total Supplies	\$2,947.29			\$2,947.29
800 <u>Other Objects</u>				
810 Dues and Fees	210.00			210.00
Total Other Objects	\$210.00			\$210.00
Total 2140 Psychological Services	\$106,574.80			\$106,574.80

LEA : 116496503 Shamokin Area SD

Printed 3/28/2019 8:53:01 AM

General Fund (10)

2160 Social Work Services

	<u>Elementary</u>	<u>Secondary</u>	<u>Federal</u>	<u>Total</u>
100 <u>Personnel Services – Salaries</u>				
100 Personnel Services – Salaries			370.00	78,330.69
Total Personnel Services – Salaries			\$370.00	\$78,330.69
200 <u>Personnel Services – Employee Benefits</u>				
210 Group Insurance – Contracted Provider				14,877.46
220 Social Security Contributions			28.31	5,935.98
230 PSERS Retirement Contributions			120.51	25,486.40
260 Workers' Compensation			3.33	704.86
Total Personnel Services – Employee Benefits			\$152.15	\$47,004.70
500 <u>Other Purchased Services</u>				
580 Travel				152.37
Total Other Purchased Services				\$152.37
600 <u>Supplies</u>				
610 General Supplies				133.68
640 Books and Periodicals				102.34
Total Supplies				\$236.02
Total 2160 Social Work Services			\$522.15	\$125,723.78

LEA : 116496503 Shamokin Area SD

Printed 3/28/2019 8:53:01 AM

General Fund (10)				
2200 Support Services – Instructional Staff	<u>Elementary</u>	<u>Secondary</u>	<u>Federal</u>	<u>Total</u>
100 <u>Personnel Services – Salaries</u>				
100 Personnel Services – Salaries	140,927.79	178,459.92	5,189.30	324,577.01
Total Personnel Services – Salaries	\$140,927.79	\$178,459.92	\$5,189.30	\$324,577.01
200 <u>Personnel Services – Employee Benefits</u>				
210 Group Insurance – Contracted Provider	38,013.31	54,208.64		92,221.95
220 Social Security Contributions	10,671.67	13,444.43	397.02	24,513.12
230 PSERS Retirement Contributions	43,551.89	55,710.67	1,690.16	100,952.72
240 Tuition Reimbursement	58,149.50	46,100.34		104,249.84
260 Workers' Compensation	1,268.36	1,606.38	46.78	2,921.52
270 Group Insurance – Self-Insurance		30,916.72		30,916.72
291 Other Retirement Plans		5,380.00		5,380.00
Total Personnel Services – Employee Benefits	\$151,654.73	\$207,367.18	\$2,133.96	\$361,155.87
300 <u>Purchased Professional and Technical Services</u>				
324 Professional Educational Services – Employee Training and Development Services	420.00	3,882.00	11,050.00	15,352.00
330 Other Professional Services	1,232.40	1,232.40	1,864.80	4,329.60
Total Purchased Professional and Technical Services	\$1,652.40	\$5,114.40	\$12,914.80	\$19,681.60
500 <u>Other Purchased Services</u>				
530 Communications		424.65		424.65
580 Travel		25.92		25.92
Total Other Purchased Services		\$450.57		\$450.57
600 <u>Supplies</u>				
610 General Supplies	88.98			88.98
630 Food	17.04	90.00		107.04
640 Books and Periodicals	4,934.90		200.00	5,134.90
650 Supplies & Fees – Technology Related	930.00	995.00		1,925.00
Total Supplies	\$5,970.92	\$1,085.00	\$200.00	\$7,255.92
800 <u>Other Objects</u>				
810 Dues and Fees		1,326.00		1,326.00
Total Other Objects		\$1,326.00		\$1,326.00
Total 2200 Support Services – Instructional Staff	\$300,205.84	\$393,803.07	\$20,438.06	\$714,446.97

LEA : 116496503 Shamokin Area SD

Printed 3/28/2019 8:53:01 AM

General Fund (10)				
2250 School Library Services	<u>Elementary</u>	<u>Secondary</u>	<u>Federal</u>	<u>Total</u>
100 <u>Personnel Services – Salaries</u>				
100 Personnel Services – Salaries	10,676.55			10,676.55
Total Personnel Services – Salaries	\$10,676.55			\$10,676.55
200 <u>Personnel Services – Employee Benefits</u>				
220 Social Security Contributions	816.73			816.73
230 PSERS Retirement Contributions	3,477.33			3,477.33
260 Workers’ Compensation	96.00			96.00
270 Group Insurance – Self-Insurance		10,000.00		10,000.00
Total Personnel Services – Employee Benefits	\$4,390.06	\$10,000.00		\$14,390.06
600 <u>Supplies</u>				
610 General Supplies	88.98			88.98
640 Books and Periodicals	4,891.90			4,891.90
650 Supplies & Fees – Technology Related	930.00	995.00		1,925.00
Total Supplies	\$5,910.88	\$995.00		\$6,905.88
Total 2250 School Library Services	\$20,977.49	\$10,995.00		\$31,972.49

LEA : 116496503 Shamokin Area SD

Printed 3/28/2019 8:53:01 AM

General Fund (10)

2260 Instruction and Curriculum Development Services	Elementary	Secondary	Federal	Total
100 <u>Personnel Services – Salaries</u>				
100 Personnel Services – Salaries	130,251.24	178,459.92		308,711.16
Total Personnel Services – Salaries	\$130,251.24	\$178,459.92		\$308,711.16
200 <u>Personnel Services – Employee Benefits</u>				
210 Group Insurance – Contracted Provider	38,013.31	54,208.64		92,221.95
220 Social Security Contributions	9,854.94	13,444.43		23,299.37
230 PSERS Retirement Contributions	40,074.56	55,710.67		95,785.23
260 Workers' Compensation	1,172.36	1,606.38		2,778.74
270 Group Insurance – Self-Insurance		20,916.72		20,916.72
291 Other Retirement Plans		5,380.00		5,380.00
Total Personnel Services – Employee Benefits	\$89,115.17	\$151,266.84		\$240,382.01
500 <u>Other Purchased Services</u>				
530 Communications		13.75		13.75
Total Other Purchased Services		\$13.75		\$13.75
600 <u>Supplies</u>				
630 Food		90.00		90.00
Total Supplies		\$90.00		\$90.00
800 <u>Other Objects</u>				
810 Dues and Fees		813.00		813.00
Total Other Objects		\$813.00		\$813.00
Total 2260 Instruction and Curriculum Development Services	\$219,366.41	\$330,643.51		\$550,009.92

LEA : 116496503 Shamokin Area SD

Printed 3/28/2019 8:53:01 AM

General Fund (10)				
2270 Instructional Staff Professional Development Services	<u>Elementary</u>	<u>Secondary</u>	<u>Federal</u>	<u>Total</u>
100 <u>Personnel Services – Salaries</u>				
100 Personnel Services – Salaries			5,189.30	5,189.30
Total Personnel Services – Salaries			\$5,189.30	\$5,189.30
200 <u>Personnel Services – Employee Benefits</u>				
220 Social Security Contributions			397.02	397.02
230 PSERS Retirement Contributions			1,690.16	1,690.16
240 Tuition Reimbursement	58,149.50	46,100.34		104,249.84
260 Workers' Compensation			46.78	46.78
Total Personnel Services – Employee Benefits	\$58,149.50	\$46,100.34	\$2,133.96	\$106,383.80
300 <u>Purchased Professional and Technical Services</u>				
324 Professional Educational Services – Employee Training and Development Services	420.00	3,882.00	11,050.00	15,352.00
330 Other Professional Services	1,232.40	1,232.40	1,864.80	4,329.60
Total Purchased Professional and Technical Services	\$1,652.40	\$5,114.40	\$12,914.80	\$19,681.60
500 <u>Other Purchased Services</u>				
530 Communications		410.90		410.90
580 Travel		25.92		25.92
Total Other Purchased Services		\$436.82		\$436.82
600 <u>Supplies</u>				
630 Food	17.04			17.04
640 Books and Periodicals	43.00		200.00	243.00
Total Supplies	\$60.04		\$200.00	\$260.04
800 <u>Other Objects</u>				
810 Dues and Fees		513.00		513.00
Total Other Objects		\$513.00		\$513.00
Total 2270 Instructional Staff Professional Development Services	\$59,861.94	\$52,164.56	\$20,438.06	\$132,464.56

LEA : 116496503 Shamokin Area SD

Printed 3/28/2019 8:53:01 AM

General Fund (10)				
2300 Support Services – Administration	<u>Elementary</u>	<u>Secondary</u>	<u>Federal</u>	<u>Total</u>
100 <u>Personnel Services – Salaries</u>				
100 Personnel Services – Salaries	240,861.12	323,132.96		799,856.41
Total Personnel Services – Salaries	\$240,861.12	\$323,132.96		\$799,856.41
200 <u>Personnel Services – Employee Benefits</u>				
210 Group Insurance – Contracted Provider	82,855.66	117,383.99		235,626.19
220 Social Security Contributions	18,192.65	24,398.86		58,728.75
230 PSERS Retirement Contributions	74,408.63	99,858.40		233,098.76
260 Workers' Compensation	2,167.94	2,907.96		7,198.41
291 Other Retirement Plans	2,500.00	3,356.85		10,096.01
Total Personnel Services – Employee Benefits	\$180,124.88	\$247,906.06		\$544,748.12
300 <u>Purchased Professional and Technical Services</u>				
310 Official / Administrative Services				21,230.91
330 Other Professional Services				97,858.18
390 Other Purchased Professional and Technical Services				32,448.98
Total Purchased Professional and Technical Services				\$151,538.07
400 <u>Purchased Property Services</u>				
430 Repairs and Maintenance Services	597.00	886.00		1,483.00
440 Rentals	1,064.09			1,759.49
Total Purchased Property Services	\$1,661.09	\$886.00		\$3,242.49
500 <u>Other Purchased Services</u>				
520 Insurance – General		100.00		3,220.22
530 Communications		669.65		1,718.40
549 Other Advertising/Public Relations				405.34
Total Other Purchased Services		\$769.65		\$5,343.96
600 <u>Supplies</u>				
610 General Supplies	2,542.78	86.00		3,716.75
630 Food				1,655.24
640 Books and Periodicals				194.00
Total Supplies	\$2,542.78	\$86.00		\$5,565.99
800 <u>Other Objects</u>				
810 Dues and Fees	1,844.00	1,432.00	1,250.00	13,834.76
820 Claims and Judgments Against the LEA				20,175.72
Total Other Objects	\$1,844.00	\$1,432.00	\$1,250.00	\$34,010.48
Total 2300 Support Services – Administration	\$427,033.87	\$574,212.67	\$1,250.00	\$1,544,305.52

LEA : 116496503 Shamokin Area SD

Printed 3/28/2019 8:53:01 AM

General Fund (10)				
2310 Board Services				
	<u>Elementary</u>	<u>Secondary</u>	<u>Federal</u>	<u>Total</u>
100 <u>Personnel Services – Salaries</u>				
100 Personnel Services – Salaries				5,400.20
Total Personnel Services – Salaries				\$5,400.20
200 <u>Personnel Services – Employee Benefits</u>				
220 Social Security Contributions				413.40
260 Workers’ Compensation				48.36
Total Personnel Services – Employee Benefits				\$461.76
500 <u>Other Purchased Services</u>				
520 Insurance – General				560.00
549 Other Advertising/Public Relations				405.34
Total Other Purchased Services				\$965.34
600 <u>Supplies</u>				
630 Food				324.00
Total Supplies				\$324.00
800 <u>Other Objects</u>				
810 Dues and Fees				7,733.76
820 Claims and Judgments Against the LEA				20,175.72
Total Other Objects				\$27,909.48
Total 2310 Board Services				\$35,060.78

LEA : 116496503 Shamokin Area SD

Printed 3/28/2019 8:53:01 AM

General Fund (10)				
2330 Tax Assessment and Collection Services	<u>Elementary</u>	<u>Secondary</u>	<u>Federal</u>	<u>Total</u>
100 <u>Personnel Services – Salaries</u>				
100 Personnel Services – Salaries				37,455.79
Total Personnel Services – Salaries				\$37,455.79
200 <u>Personnel Services – Employee Benefits</u>				
220 Social Security Contributions				2,865.26
260 Workers’ Compensation				337.26
Total Personnel Services – Employee Benefits				\$3,202.52
300 <u>Purchased Professional and Technical Services</u>				
310 Official / Administrative Services				21,230.91
330 Other Professional Services				18,360.00
390 Other Purchased Professional and Technical Services				32,448.98
Total Purchased Professional and Technical Services				\$72,039.89
500 <u>Other Purchased Services</u>				
520 Insurance – General				2,560.22
530 Communications				1,048.75
Total Other Purchased Services				\$3,608.97
600 <u>Supplies</u>				
610 General Supplies				640.33
Total Supplies				\$640.33
Total 2330 Tax Assessment and Collection Services				\$116,947.50

LEA : 116496503 Shamokin Area SD

Printed 3/28/2019 8:53:01 AM

General Fund (10)

2350 Legal and Accounting Services	<u>Elementary</u>	<u>Secondary</u>	<u>Federal</u>	<u>Total</u>
300 <u>Purchased Professional and Technical Services</u>				
330 Other Professional Services				79,498.18
Total Purchased Professional and Technical Services				\$79,498.18
Total 2350 Legal and Accounting Services				\$79,498.18

LEA : 116496503 Shamokin Area SD

Printed 3/28/2019 8:53:01 AM

General Fund (10)				
2360 Office of the Superintendent / Executive Director Services	<u>Elementary</u>	<u>Secondary</u>	<u>Federal</u>	<u>Total</u>
100 <u>Personnel Services – Salaries</u>				
100 Personnel Services – Salaries				193,006.34
Total Personnel Services – Salaries				\$193,006.34
200 <u>Personnel Services – Employee Benefits</u>				
210 Group Insurance – Contracted Provider				35,386.54
220 Social Security Contributions				12,858.58
230 PSERS Retirement Contributions				58,831.73
260 Workers' Compensation				1,736.89
291 Other Retirement Plans				4,239.16
Total Personnel Services – Employee Benefits				\$113,052.90
400 <u>Purchased Property Services</u>				
440 Rentals				695.40
Total Purchased Property Services				\$695.40
500 <u>Other Purchased Services</u>				
530 Communications		302.08		302.08
Total Other Purchased Services		\$302.08		\$302.08
600 <u>Supplies</u>				
610 General Supplies				447.64
640 Books and Periodicals				194.00
Total Supplies				\$641.64
800 <u>Other Objects</u>				
810 Dues and Fees				1,575.00
Total Other Objects				\$1,575.00
Total 2360 Office of the Superintendent / Executive Director Services		\$302.08		\$309,273.36

LEA : 116496503 Shamokin Area SD

Printed 3/28/2019 8:53:01 AM

General Fund (10)

2370 Community Relations Services	<u>Elementary</u>	<u>Secondary</u>	<u>Federal</u>	<u>Total</u>
600 <u>Supplies</u>				
630 Food				1,331.24
Total Supplies				\$1,331.24
Total 2370 Community Relations Services				\$1,331.24

LEA : 116496503 Shamokin Area SD

Printed 3/28/2019 8:53:01 AM

General Fund (10)				
2380 Office of the Principal Services	<u>Elementary</u>	<u>Secondary</u>	<u>Federal</u>	<u>Total</u>
100 <u>Personnel Services – Salaries</u>				
100 Personnel Services – Salaries	240,861.12	323,132.96		563,994.08
Total Personnel Services – Salaries	\$240,861.12	\$323,132.96		\$563,994.08
200 <u>Personnel Services – Employee Benefits</u>				
210 Group Insurance – Contracted Provider	82,855.66	117,383.99		200,239.65
220 Social Security Contributions	18,192.65	24,398.86		42,591.51
230 PSERS Retirement Contributions	74,408.63	99,858.40		174,267.03
260 Workers' Compensation	2,167.94	2,907.96		5,075.90
291 Other Retirement Plans	2,500.00	3,356.85		5,856.85
Total Personnel Services – Employee Benefits	\$180,124.88	\$247,906.06		\$428,030.94
400 <u>Purchased Property Services</u>				
430 Repairs and Maintenance Services	597.00	886.00		1,483.00
440 Rentals	1,064.09			1,064.09
Total Purchased Property Services	\$1,661.09	\$886.00		\$2,547.09
500 <u>Other Purchased Services</u>				
520 Insurance – General		100.00		100.00
530 Communications		367.57		367.57
Total Other Purchased Services		\$467.57		\$467.57
600 <u>Supplies</u>				
610 General Supplies	2,542.78	86.00		2,628.78
Total Supplies	\$2,542.78	\$86.00		\$2,628.78
800 <u>Other Objects</u>				
810 Dues and Fees	1,844.00	1,432.00		3,276.00
Total Other Objects	\$1,844.00	\$1,432.00		\$3,276.00
Total 2380 Office of the Principal Services	\$427,033.87	\$573,910.59		\$1,000,944.46

LEA : 116496503 Shamokin Area SD

Printed 3/28/2019 8:53:01 AM

General Fund (10)				
2390 Other Administration Services	<u>Elementary</u>	<u>Secondary</u>	<u>Federal</u>	<u>Total</u>
800 <u>Other Objects</u>				
810 Dues and Fees			1,250.00	1,250.00
Total Other Objects			\$1,250.00	\$1,250.00
Total 2390 Other Administration Services			\$1,250.00	\$1,250.00

LEA : 116496503 Shamokin Area SD

Printed 3/28/2019 8:53:01 AM

General Fund (10)				
2400 Support Services – Pupil Health	<u>Elementary</u>	<u>Secondary</u>	<u>Federal</u>	<u>Total</u>
100 <u>Personnel Services – Salaries</u>				
100 Personnel Services – Salaries			31,659.26	286,325.50
Total Personnel Services – Salaries			\$31,659.26	\$286,325.50
200 <u>Personnel Services – Employee Benefits</u>				
210 Group Insurance – Contracted Provider			24,183.62	122,759.04
220 Social Security Contributions			2,374.18	21,553.44
230 PSERS Retirement Contributions			10,181.08	89,049.74
260 Workers' Compensation			284.92	2,576.95
270 Group Insurance – Self-Insurance				60.60
Total Personnel Services – Employee Benefits			\$37,023.80	\$235,999.77
300 <u>Purchased Professional and Technical Services</u>				
330 Other Professional Services				24,107.67
Total Purchased Professional and Technical Services				\$24,107.67
400 <u>Purchased Property Services</u>				
430 Repairs and Maintenance Services				649.61
Total Purchased Property Services				\$649.61
500 <u>Other Purchased Services</u>				
530 Communications				367.56
Total Other Purchased Services				\$367.56
600 <u>Supplies</u>				
610 General Supplies				6,446.01
Total Supplies				\$6,446.01
Total 2400 Support Services – Pupil Health			\$68,683.06	\$553,896.12

LEA : 116496503 Shamokin Area SD

Printed 3/28/2019 8:53:01 AM

General Fund (10)

2420 Medical Services

Elementary Secondary Federal Total

300 Purchased Professional and Technical Services

330 Other Professional Services 6,097.17

Total Purchased Professional and Technical Services \$6,097.17

600 Supplies

610 General Supplies 338.42

Total Supplies \$338.42

Total 2420 Medical Services \$6,435.59

LEA : 116496503 Shamokin Area SD

Printed 3/28/2019 8:53:01 AM

General Fund (10)

2430 Dental Services

	<u>Elementary</u>	<u>Secondary</u>	<u>Federal</u>	<u>Total</u>
300 <u>Purchased Professional and Technical Services</u>				
330 Other Professional Services				370.50
Total Purchased Professional and Technical Services				\$370.50
Total 2430 Dental Services				\$370.50

LEA : 116496503 Shamokin Area SD

Printed 3/28/2019 8:53:01 AM

General Fund (10)				
2440 Nursing Services				
	<u>Elementary</u>	<u>Secondary</u>	<u>Federal</u>	<u>Total</u>
100 <u>Personnel Services – Salaries</u>				
100 Personnel Services – Salaries			31,659.26	262,128.28
Total Personnel Services – Salaries			\$31,659.26	\$262,128.28
200 <u>Personnel Services – Employee Benefits</u>				
210 Group Insurance – Contracted Provider			24,183.62	115,542.74
220 Social Security Contributions			2,374.18	19,742.61
230 PSERS Retirement Contributions			10,181.08	81,168.62
260 Workers' Compensation			284.92	2,359.09
270 Group Insurance – Self-Insurance				60.60
Total Personnel Services – Employee Benefits			\$37,023.80	\$218,873.66
400 <u>Purchased Property Services</u>				
430 Repairs and Maintenance Services				528.86
Total Purchased Property Services				\$528.86
500 <u>Other Purchased Services</u>				
530 Communications				367.56
Total Other Purchased Services				\$367.56
600 <u>Supplies</u>				
610 General Supplies				5,319.47
Total Supplies				\$5,319.47
Total 2440 Nursing Services			\$68,683.06	\$487,217.83

LEA : 116496503 Shamokin Area SD

Printed 3/28/2019 8:53:01 AM

General Fund (10)

2450 Nonpublic Health Services	<u>Elementary</u>	<u>Secondary</u>	<u>Federal</u>	<u>Total</u>
100 <u>Personnel Services – Salaries</u>				
100 Personnel Services – Salaries				24,197.22
Total Personnel Services – Salaries				\$24,197.22
200 <u>Personnel Services – Employee Benefits</u>				
210 Group Insurance – Contracted Provider				7,216.30
220 Social Security Contributions				1,810.83
230 PSERS Retirement Contributions				7,881.12
260 Workers' Compensation				217.86
Total Personnel Services – Employee Benefits				\$17,126.11
400 <u>Purchased Property Services</u>				
430 Repairs and Maintenance Services				120.75
Total Purchased Property Services				\$120.75
600 <u>Supplies</u>				
610 General Supplies				788.12
Total Supplies				\$788.12
Total 2450 Nonpublic Health Services				\$42,232.20

LEA : 116496503 Shamokin Area SD

Printed 3/28/2019 8:53:01 AM

General Fund (10)

2490 Other Health Services

<u>Elementary</u>	<u>Secondary</u>	<u>Federal</u>	<u>Total</u>
-------------------	------------------	----------------	--------------

300 Purchased Professional and Technical Services

330 Other Professional Services			17,640.00
---------------------------------	--	--	-----------

Total Purchased Professional and Technical Services			\$17,640.00
--	--	--	--------------------

Total 2490 Other Health Services			\$17,640.00
---	--	--	--------------------

LEA : 116496503 Shamokin Area SD

Printed 3/28/2019 8:53:01 AM

General Fund (10)				
2500 Support Services – Business	<u>Elementary</u>	<u>Secondary</u>	<u>Federal</u>	<u>Total</u>
100 <u>Personnel Services – Salaries</u>				
100 Personnel Services – Salaries			13,366.23	363,610.82
Total Personnel Services – Salaries			\$13,366.23	\$363,610.82
200 <u>Personnel Services – Employee Benefits</u>				
210 Group Insurance – Contracted Provider			12,091.69	134,299.45
220 Social Security Contributions			998.44	27,585.03
230 PSERS Retirement Contributions			4,353.46	122,141.24
260 Workers' Compensation			120.31	3,272.70
291 Other Retirement Plans				2,310.00
Total Personnel Services – Employee Benefits			\$17,563.90	\$289,608.42
300 <u>Purchased Professional and Technical Services</u>				
330 Other Professional Services				28,345.00
Total Purchased Professional and Technical Services				\$28,345.00
400 <u>Purchased Property Services</u>				
430 Repairs and Maintenance Services				360.00
440 Rentals				28,976.84
Total Purchased Property Services				\$29,336.84
500 <u>Other Purchased Services</u>				
530 Communications				12,155.55
549 Other Advertising/Public Relations				1,899.25
Total Other Purchased Services				\$14,054.80
600 <u>Supplies</u>				
610 General Supplies				3,108.90
650 Supplies & Fees – Technology Related				22,273.80
Total Supplies				\$25,382.70
800 <u>Other Objects</u>				
810 Dues and Fees				1,199.78
Total Other Objects				\$1,199.78
Total 2500 Support Services – Business			\$30,930.13	\$751,538.36

LEA : 116496503 Shamokin Area SD

Printed 3/28/2019 8:53:01 AM

General Fund (10)				
2510 Fiscal Services				
	<u>Elementary</u>	<u>Secondary</u>	<u>Federal</u>	<u>Total</u>
100 <u>Personnel Services – Salaries</u>				
100 Personnel Services – Salaries			13,366.23	333,563.90
Total Personnel Services – Salaries			\$13,366.23	\$333,563.90
200 <u>Personnel Services – Employee Benefits</u>				
210 Group Insurance – Contracted Provider			12,091.69	128,154.93
220 Social Security Contributions			998.44	25,305.98
230 PSERS Retirement Contributions			4,353.46	104,618.42
260 Workers' Compensation			120.31	3,002.25
291 Other Retirement Plans				2,310.00
Total Personnel Services – Employee Benefits			\$17,563.90	\$263,391.58
300 <u>Purchased Professional and Technical Services</u>				
330 Other Professional Services				28,345.00
Total Purchased Professional and Technical Services				\$28,345.00
500 <u>Other Purchased Services</u>				
530 Communications				938.58
Total Other Purchased Services				\$938.58
600 <u>Supplies</u>				
610 General Supplies				1,522.84
650 Supplies & Fees – Technology Related				22,273.80
Total Supplies				\$23,796.64
800 <u>Other Objects</u>				
810 Dues and Fees				1,199.78
Total Other Objects				\$1,199.78
Total 2510 Fiscal Services			\$30,930.13	\$651,235.48

LEA : 116496503 Shamokin Area SD

Printed 3/28/2019 8:53:01 AM

General Fund (10)				
2511 Supervision of Fiscal Services - Head of Component	<u>Elementary</u>	<u>Secondary</u>	<u>Federal</u>	<u>Total</u>
100 <u>Personnel Services – Salaries</u>				
100 Personnel Services – Salaries				171,724.16
Total Personnel Services – Salaries				\$171,724.16
200 <u>Personnel Services – Employee Benefits</u>				
210 Group Insurance – Contracted Provider			(312.00)	44,607.50
220 Social Security Contributions				13,112.73
230 PSERS Retirement Contributions				53,273.43
260 Workers' Compensation				1,545.66
291 Other Retirement Plans				2,310.00
Total Personnel Services – Employee Benefits			(\$312.00)	\$114,849.32
600 <u>Supplies</u>				
610 General Supplies				1,052.91
650 Supplies & Fees – Technology Related				11,683.80
Total Supplies				\$12,736.71
800 <u>Other Objects</u>				
810 Dues and Fees				745.00
Total Other Objects				\$745.00
Total 2511 Supervision of Fiscal Services - Head of Component			(\$312.00)	\$300,055.19

LEA : 116496503 Shamokin Area SD

Printed 3/28/2019 8:53:01 AM

General Fund (10)

2513 Receiving and Disbursing Funds Services	<u>Elementary</u>	<u>Secondary</u>	<u>Federal</u>	<u>Total</u>
100 <u>Personnel Services – Salaries</u>				
100 Personnel Services – Salaries				70,222.01
Total Personnel Services – Salaries				\$70,222.01
200 <u>Personnel Services – Employee Benefits</u>				
210 Group Insurance – Contracted Provider				27,891.50
220 Social Security Contributions				5,299.49
230 PSERS Retirement Contributions				22,406.74
260 Workers' Compensation				632.08
Total Personnel Services – Employee Benefits				\$56,229.81
Total 2513 Receiving and Disbursing Funds Services				\$126,451.82

LEA : 116496503 Shamokin Area SD

Printed 3/28/2019 8:53:01 AM

General Fund (10)				
2514 Payroll Services	<u>Elementary</u>	<u>Secondary</u>	<u>Federal</u>	<u>Total</u>
100 <u>Personnel Services – Salaries</u>				
100 Personnel Services – Salaries				49,682.44
Total Personnel Services – Salaries				\$49,682.44
200 <u>Personnel Services – Employee Benefits</u>				
210 Group Insurance – Contracted Provider				19,068.62
220 Social Security Contributions				3,757.52
230 PSERS Retirement Contributions				15,279.91
260 Workers' Compensation				447.06
Total Personnel Services – Employee Benefits				\$38,553.11
600 <u>Supplies</u>				
610 General Supplies				91.99
650 Supplies & Fees – Technology Related				10,590.00
Total Supplies				\$10,681.99
Total 2514 Payroll Services				\$98,917.54

LEA : 116496503 Shamokin Area SD

Printed 3/28/2019 8:53:01 AM

General Fund (10)

2515 Financial Accounting Services	<u>Elementary</u>	<u>Secondary</u>	<u>Federal</u>	<u>Total</u>
100 <u>Personnel Services – Salaries</u>				
100 Personnel Services – Salaries			13,366.23	41,935.29
Total Personnel Services – Salaries			\$13,366.23	\$41,935.29
200 <u>Personnel Services – Employee Benefits</u>				
210 Group Insurance – Contracted Provider			12,403.69	36,587.31
220 Social Security Contributions			998.44	3,136.24
230 PSERS Retirement Contributions			4,353.46	13,658.34
260 Workers' Compensation			120.31	377.45
Total Personnel Services – Employee Benefits			\$17,875.90	\$53,759.34
Total 2515 Financial Accounting Services			\$31,242.13	\$95,694.63

LEA : 116496503 Shamokin Area SD

Printed 3/28/2019 8:53:01 AM

General Fund (10)

2516 Internal Auditing Services

<u>Elementary</u>	<u>Secondary</u>	<u>Federal</u>	<u>Total</u>
-------------------	------------------	----------------	--------------

300 Purchased Professional and Technical Services

330 Other Professional Services			21,000.00
---------------------------------	--	--	-----------

Total Purchased Professional and Technical Services			\$21,000.00
--	--	--	--------------------

Total 2516 Internal Auditing Services			\$21,000.00
--	--	--	--------------------

LEA : 116496503 Shamokin Area SD

Printed 3/28/2019 8:53:01 AM

General Fund (10)

2517 Property Accounting Services	<u>Elementary</u>	<u>Secondary</u>	<u>Federal</u>	<u>Total</u>
300 <u>Purchased Professional and Technical Services</u>				
330 Other Professional Services				945.00
Total Purchased Professional and Technical Services				\$945.00
Total 2517 Property Accounting Services				\$945.00

LEA : 116496503 Shamokin Area SD

Printed 3/28/2019 8:53:01 AM

General Fund (10)				
2519 Other Fiscal Services	<u>Elementary</u>	<u>Secondary</u>	<u>Federal</u>	<u>Total</u>
300 <u>Purchased Professional and Technical Services</u>				
330 Other Professional Services				6,400.00
Total Purchased Professional and Technical Services				\$6,400.00
500 <u>Other Purchased Services</u>				
530 Communications				938.58
Total Other Purchased Services				\$938.58
600 <u>Supplies</u>				
610 General Supplies				377.94
Total Supplies				\$377.94
800 <u>Other Objects</u>				
810 Dues and Fees				454.78
Total Other Objects				\$454.78
Total 2519 Other Fiscal Services				\$8,171.30

LEA : 116496503 Shamokin Area SD

Printed 3/28/2019 8:53:01 AM

General Fund (10)

2520 Purchasing Services	<u>Elementary</u>	<u>Secondary</u>	<u>Federal</u>	<u>Total</u>
400 <u>Purchased Property Services</u>				
430 Repairs and Maintenance Services				360.00
440 Rentals				5,544.20
Total Purchased Property Services				\$5,904.20
500 <u>Other Purchased Services</u>				
530 Communications				11,216.97
Total Other Purchased Services				\$11,216.97
600 <u>Supplies</u>				
610 General Supplies				921.06
Total Supplies				\$921.06
Total 2520 Purchasing Services				\$18,042.23

LEA : 116496503 Shamokin Area SD

Printed 3/28/2019 8:53:01 AM

General Fund (10)

2530 Warehousing and Distributing Services	<u>Elementary</u>	<u>Secondary</u>	<u>Federal</u>	<u>Total</u>
100 <u>Personnel Services – Salaries</u>				
100 Personnel Services – Salaries				30,046.92
Total Personnel Services – Salaries				\$30,046.92
200 <u>Personnel Services – Employee Benefits</u>				
210 Group Insurance – Contracted Provider				6,144.52
220 Social Security Contributions				2,279.05
230 PSERS Retirement Contributions				17,522.82
260 Workers' Compensation				270.45
Total Personnel Services – Employee Benefits				\$26,216.84
Total 2530 Warehousing and Distributing Services				\$56,263.76

LEA : 116496503 Shamokin Area SD

Printed 3/28/2019 8:53:01 AM

General Fund (10)

2540 Printing, Publishing and Duplicating Services	<u>Elementary</u>	<u>Secondary</u>	<u>Federal</u>	<u>Total</u>
400 <u>Purchased Property Services</u>				
440 Rentals				23,432.64
Total Purchased Property Services				\$23,432.64
600 <u>Supplies</u>				
610 General Supplies				665.00
Total Supplies				\$665.00
Total 2540 Printing, Publishing and Duplicating Services				\$24,097.64

LEA : 116496503 Shamokin Area SD

Printed 3/28/2019 8:53:01 AM

General Fund (10)

2590 Other Support Services – Business	<u>Elementary</u>	<u>Secondary</u>	<u>Federal</u>	<u>Total</u>
500 <u>Other Purchased Services</u>				
549 Other Advertising/Public Relations				1,899.25
Total Other Purchased Services				\$1,899.25
Total 2590 Other Support Services – Business				\$1,899.25

LEA : 116496503 Shamokin Area SD

Printed 3/28/2019 8:53:01 AM

General Fund (10)				
2600 Operation and Maintenance of Plant Services	<u>Elementary</u>	<u>Secondary</u>	<u>Federal</u>	<u>Total</u>
100 <u>Personnel Services – Salaries</u>				
100 Personnel Services – Salaries				958,134.53
Total Personnel Services – Salaries				\$958,134.53
200 <u>Personnel Services – Employee Benefits</u>				
210 Group Insurance – Contracted Provider				318,446.44
220 Social Security Contributions				73,901.81
230 PSERS Retirement Contributions				303,626.02
250 Unemployment Compensation				(85.33)
260 Workers' Compensation				8,716.30
291 Other Retirement Plans				2,271.29
Total Personnel Services – Employee Benefits				\$706,876.53
300 <u>Purchased Professional and Technical Services</u>				
330 Other Professional Services				2,956.13
Total Purchased Professional and Technical Services				\$2,956.13
400 <u>Purchased Property Services</u>				
410 Cleaning Services				47,764.44
420 Utility Services				100,221.97
430 Repairs and Maintenance Services				36,524.46
440 Rentals				2,975.87
450 Construction Services				2,850.00
490 Other Purchased Property Services				9,845.00
Total Purchased Property Services				\$200,181.74
500 <u>Other Purchased Services</u>				
522 Automotive Liability Insurance				19,003.00
523 General Property and Liability Insurance				95,930.20
529 Other Insurance				11,868.45
530 Communications				21,108.25
Total Other Purchased Services				\$147,909.90
600 <u>Supplies</u>				
610 General Supplies	52,512.17	112,122.25		164,634.42
620 Energy			98.98	317,768.65
640 Books and Periodicals				257.10
650 Supplies & Fees – Technology Related				1,275.00
Total Supplies	\$52,512.17	\$112,122.25	\$98.98	\$483,935.17
700 <u>Property</u>				
752 Capital Equipment – Original and Additional				8,433.60
756 Capitalized Technology Hardware and Equipment– Original				1,399.00
762 Capitalized Equipment - Replacement				3,015.00
Total Property				\$12,847.60
800 <u>Other Objects</u>				
810 Dues and Fees				269.00

LEA : 116496503 Shamokin Area SD

Printed 3/28/2019 8:53:01 AM

General Fund (10)

2600 Operation and Maintenance of Plant Services	<u>Elementary</u>	<u>Secondary</u>	<u>Federal</u>	<u>Total</u>
Total Other Objects				\$269.00
Total 2600 Operation and Maintenance of Plant Services	\$52,512.17	\$112,122.25	\$98.98	\$2,513,110.60

LEA : 116496503 Shamokin Area SD

Printed 3/28/2019 8:53:01 AM

General Fund (10)				
2610 Supervision of Operation and Maintenance of Plant Services	<u>Elementary</u>	<u>Secondary</u>	<u>Federal</u>	<u>Total</u>
100 <u>Personnel Services – Salaries</u>				
100 Personnel Services – Salaries				81,533.31
Total Personnel Services – Salaries				\$81,533.31
200 <u>Personnel Services – Employee Benefits</u>				
210 Group Insurance – Contracted Provider				24,651.08
220 Social Security Contributions				6,167.18
230 PSERS Retirement Contributions				24,658.69
260 Workers' Compensation				733.87
291 Other Retirement Plans				2,271.29
Total Personnel Services – Employee Benefits				\$58,482.11
500 <u>Other Purchased Services</u>				
530 Communications				466.96
Total Other Purchased Services				\$466.96
800 <u>Other Objects</u>				
810 Dues and Fees				224.00
Total Other Objects				\$224.00
Total 2610 Supervision of Operation and Maintenance of Plant Services				\$140,706.38

LEA : 116496503 Shamokin Area SD

Printed 3/28/2019 8:53:01 AM

General Fund (10)				
2611 Supervision of Operation and Maintenance of Plant Services – Head of Component	<u>Elementary</u>	<u>Secondary</u>	<u>Federal</u>	<u>Total</u>
100 <u>Personnel Services – Salaries</u>				
100 Personnel Services – Salaries				81,533.31
Total Personnel Services – Salaries				\$81,533.31
200 <u>Personnel Services – Employee Benefits</u>				
210 Group Insurance – Contracted Provider				24,651.08
220 Social Security Contributions				6,167.18
230 PSERS Retirement Contributions				24,658.69
260 Workers' Compensation				733.87
291 Other Retirement Plans				2,271.29
Total Personnel Services – Employee Benefits				\$58,482.11
500 <u>Other Purchased Services</u>				
530 Communications				466.96
Total Other Purchased Services				\$466.96
800 <u>Other Objects</u>				
810 Dues and Fees				224.00
Total Other Objects				\$224.00
Total 2611 Supervision of Operation and Maintenance of Plant Services – Head of Component				\$140,706.38

LEA : 116496503 Shamokin Area SD

Printed 3/28/2019 8:53:01 AM

General Fund (10)				
2620 Operation of Buildings Services	<u>Elementary</u>	<u>Secondary</u>	<u>Federal</u>	<u>Total</u>
100 <u>Personnel Services – Salaries</u>				
100 Personnel Services – Salaries				682,645.25
Total Personnel Services – Salaries				\$682,645.25
200 <u>Personnel Services – Employee Benefits</u>				
210 Group Insurance – Contracted Provider				250,527.37
220 Social Security Contributions				52,988.19
230 PSERS Retirement Contributions				217,543.16
250 Unemployment Compensation				(134.11)
260 Workers' Compensation				6,237.16
Total Personnel Services – Employee Benefits				\$527,161.77
300 <u>Purchased Professional and Technical Services</u>				
330 Other Professional Services				2,956.13
Total Purchased Professional and Technical Services				\$2,956.13
400 <u>Purchased Property Services</u>				
410 Cleaning Services				40,244.44
420 Utility Services				100,221.97
430 Repairs and Maintenance Services				27,066.55
440 Rentals				160.00
490 Other Purchased Property Services				9,845.00
Total Purchased Property Services				\$177,537.96
500 <u>Other Purchased Services</u>				
523 General Property and Liability Insurance				95,930.20
529 Other Insurance				11,868.45
530 Communications				14,555.71
Total Other Purchased Services				\$122,354.36
600 <u>Supplies</u>				
610 General Supplies	49,813.70	63,747.04		113,560.74
620 Energy			98.98	302,556.43
640 Books and Periodicals				257.10
Total Supplies	\$49,813.70	\$63,747.04	\$98.98	\$416,374.27
700 <u>Property</u>				
752 Capital Equipment – Original and Additional				8,433.60
762 Capitalized Equipment - Replacement				3,015.00
Total Property				\$11,448.60
800 <u>Other Objects</u>				
810 Dues and Fees				45.00
Total Other Objects				\$45.00
Total 2620 Operation of Buildings Services	\$49,813.70	\$63,747.04	\$98.98	\$1,940,523.34

LEA : 116496503 Shamokin Area SD

Printed 3/28/2019 8:53:01 AM

General Fund (10)				
2630 Care and Upkeep of Grounds Services	<u>Elementary</u>	<u>Secondary</u>	<u>Federal</u>	<u>Total</u>
100 <u>Personnel Services – Salaries</u>				
100 Personnel Services – Salaries				70,558.50
Total Personnel Services – Salaries				\$70,558.50
200 <u>Personnel Services – Employee Benefits</u>				
210 Group Insurance – Contracted Provider				43,252.24
220 Social Security Contributions				5,306.74
230 PSERS Retirement Contributions				22,297.04
260 Workers' Compensation				634.98
Total Personnel Services – Employee Benefits				\$71,491.00
400 <u>Purchased Property Services</u>				
410 Cleaning Services				7,520.00
430 Repairs and Maintenance Services				299.00
440 Rentals				2,815.87
450 Construction Services				2,850.00
Total Purchased Property Services				\$13,484.87
500 <u>Other Purchased Services</u>				
530 Communications				367.54
Total Other Purchased Services				\$367.54
600 <u>Supplies</u>				
610 General Supplies	2,253.73	41,133.38		43,387.11
620 Energy				1,896.26
Total Supplies	\$2,253.73	\$41,133.38		\$45,283.37
Total 2630 Care and Upkeep of Grounds Services	\$2,253.73	\$41,133.38		\$201,185.28

LEA : 116496503 Shamokin Area SD

Printed 3/28/2019 8:53:01 AM

General Fund (10)				
2640 Care and Upkeep of Equipment Services	<u>Elementary</u>	<u>Secondary</u>	<u>Federal</u>	<u>Total</u>
400 <u>Purchased Property Services</u>				
430 Repairs and Maintenance Services				1,193.20
Total Purchased Property Services				\$1,193.20
600 <u>Supplies</u>				
610 General Supplies		1,893.52		1,893.52
Total Supplies		\$1,893.52		\$1,893.52
Total 2640 Care and Upkeep of Equipment Services		\$1,893.52		\$3,086.72

LEA : 116496503 Shamokin Area SD

Printed 3/28/2019 8:53:01 AM

General Fund (10)				
2650 Vehicle Operation and Maintenance Services (Other Than Student Transportation Vehicles)	<u>Elementary</u>	<u>Secondary</u>	<u>Federal</u>	<u>Total</u>
400 <u>Purchased Property Services</u>				
430 Repairs and Maintenance Services				7,965.71
Total Purchased Property Services				\$7,965.71
500 <u>Other Purchased Services</u>				
522 Automotive Liability Insurance				19,003.00
Total Other Purchased Services				\$19,003.00
600 <u>Supplies</u>				
610 General Supplies	12.13	4,678.75		4,690.88
620 Energy				13,315.96
Total Supplies	\$12.13	\$4,678.75		\$18,006.84
Total 2650 Vehicle Operation and Maintenance Services (Other Than Student Transportation Vehicles)	\$12.13	\$4,678.75		\$44,975.55

LEA : 116496503 Shamokin Area SD

Printed 3/28/2019 8:53:01 AM

General Fund (10)				
2660 Safety and Security Services	<u>Elementary</u>	<u>Secondary</u>	<u>Federal</u>	<u>Total</u>
100 <u>Personnel Services – Salaries</u>				
100 Personnel Services – Salaries				123,247.47
Total Personnel Services – Salaries				\$123,247.47
200 <u>Personnel Services – Employee Benefits</u>				
210 Group Insurance – Contracted Provider				15.75
220 Social Security Contributions				9,428.22
230 PSERS Retirement Contributions				39,078.27
250 Unemployment Compensation				48.78
260 Workers' Compensation				1,108.94
Total Personnel Services – Employee Benefits				\$49,679.96
500 <u>Other Purchased Services</u>				
530 Communications				5,718.04
Total Other Purchased Services				\$5,718.04
600 <u>Supplies</u>				
610 General Supplies	432.61	669.56		1,102.17
650 Supplies & Fees – Technology Related				1,275.00
Total Supplies	\$432.61	\$669.56		\$2,377.17
700 <u>Property</u>				
756 Capitalized Technology Hardware and Equipment– Original				1,399.00
Total Property				\$1,399.00
Total 2660 Safety and Security Services	\$432.61	\$669.56		\$182,421.64

LEA : 116496503 Shamokin Area SD

Printed 3/28/2019 8:53:01 AM

General Fund (10)

2690 Other Operation and Maintenance of Plant Services	<u>Elementary</u>	<u>Secondary</u>	<u>Federal</u>	<u>Total</u>
100 <u>Personnel Services – Salaries</u>				
100 Personnel Services – Salaries				150.00
Total Personnel Services – Salaries				\$150.00
200 <u>Personnel Services – Employee Benefits</u>				
220 Social Security Contributions				11.48
230 PSERS Retirement Contributions				48.86
260 Workers’ Compensation				1.35
Total Personnel Services – Employee Benefits				\$61.69
Total 2690 Other Operation and Maintenance of Plant Services				\$211.69

LEA : 116496503 Shamokin Area SD

Printed 3/28/2019 8:53:01 AM

General Fund (10)				
2700 Student Transportation Services	<u>Elementary</u>	<u>Secondary</u>	<u>Federal</u>	<u>Total</u>
300 <u>Purchased Professional and Technical Services</u>				
324 Professional Educational Services – Employee Training and Development Services				65.00
330 Other Professional Services				20.00
390 Other Purchased Professional and Technical Services				1,114.00
Total Purchased Professional and Technical Services				\$1,199.00
500 <u>Other Purchased Services</u>				
513 Contracted Carriers				1,257,646.24
516 Student Transportation Services From the IU				39,823.36
522 Automotive Liability Insurance				(1,574.00)
Total Other Purchased Services				\$1,295,895.60
800 <u>Other Objects</u>				
810 Dues and Fees				48.00
Total Other Objects				\$48.00
Total 2700 Student Transportation Services				\$1,297,142.60

LEA : 116496503 Shamokin Area SD

Printed 3/28/2019 8:53:01 AM

General Fund (10)				
2720 Vehicle Operation Services	<u>Elementary</u>	<u>Secondary</u>	<u>Federal</u>	<u>Total</u>
300 <u>Purchased Professional and Technical Services</u>				
324 Professional Educational Services – Employee Training and Development Services				65.00
330 Other Professional Services				20.00
390 Other Purchased Professional and Technical Services				1,114.00
Total Purchased Professional and Technical Services				\$1,199.00
500 <u>Other Purchased Services</u>				
513 Contracted Carriers				1,114,395.64
516 Student Transportation Services From the IU				39,823.36
Total Other Purchased Services				\$1,154,219.00
800 <u>Other Objects</u>				
810 Dues and Fees				48.00
Total Other Objects				\$48.00
Total 2720 Vehicle Operation Services				\$1,155,466.00

LEA : 116496503 Shamokin Area SD

Printed 3/28/2019 8:53:01 AM

General Fund (10)

2750 Nonpublic Transportation	<u>Elementary</u>	<u>Secondary</u>	<u>Federal</u>	<u>Total</u>
500 <u>Other Purchased Services</u>				
513 Contracted Carriers				143,250.60
Total Other Purchased Services				\$143,250.60
Total 2750 Nonpublic Transportation				\$143,250.60

LEA : 116496503 Shamokin Area SD

Printed 3/28/2019 8:53:01 AM

General Fund (10)

2790 Other Student Transportation Services	<u>Elementary</u>	<u>Secondary</u>	<u>Federal</u>	<u>Total</u>
500 <u>Other Purchased Services</u>				
522 Automotive Liability Insurance				(1,574.00)
Total Other Purchased Services				(\$1,574.00)
Total 2790 Other Student Transportation Services				(\$1,574.00)

LEA : 116496503 Shamokin Area SD

Printed 3/28/2019 8:53:01 AM

General Fund (10)				
2800 Support Services – Central				
	<u>Elementary</u>	<u>Secondary</u>	<u>Federal</u>	<u>Total</u>
100 <u>Personnel Services – Salaries</u>				
100 Personnel Services – Salaries			11,358.75	136,562.72
Total Personnel Services – Salaries			\$11,358.75	\$136,562.72
200 <u>Personnel Services – Employee Benefits</u>				
210 Group Insurance – Contracted Provider			2,512.49	48,264.99
220 Social Security Contributions			872.19	10,359.33
230 PSERS Retirement Contributions			3,316.83	42,450.33
260 Workers' Compensation			102.36	1,229.18
270 Group Insurance – Self-Insurance				18,168.72
Total Personnel Services – Employee Benefits			\$6,803.87	\$120,472.55
300 <u>Purchased Professional and Technical Services</u>				
324 Professional Educational Services – Employee Training and Development Services			3,514.97	5,219.97
Total Purchased Professional and Technical Services			\$3,514.97	\$5,219.97
400 <u>Purchased Property Services</u>				
430 Repairs and Maintenance Services				9,783.43
440 Rentals				13,248.57
Total Purchased Property Services				\$23,032.00
500 <u>Other Purchased Services</u>				
530 Communications				509.58
580 Travel				205.49
Total Other Purchased Services				\$715.07
600 <u>Supplies</u>				
610 General Supplies				72,629.05
650 Supplies & Fees – Technology Related				28,751.13
Total Supplies				\$101,380.18
700 <u>Property</u>				
756 Capitalized Technology Hardware and Equipment– Original				65,032.34
758 Capitalized Technology Software - Original				13,123.89
766 Capitalized Technology Hardware and Equipment– Replacement				32,593.95
Total Property				\$110,750.18
800 <u>Other Objects</u>				
810 Dues and Fees				104.94
Total Other Objects				\$104.94
Total 2800 Support Services – Central			\$21,677.59	\$498,237.61

LEA : 116496503 Shamokin Area SD

Printed 3/28/2019 8:53:01 AM

General Fund (10)				
2810 Planning, Research, Development and Evaluation Services	<u>Elementary</u>	<u>Secondary</u>	<u>Federal</u>	<u>Total</u>
100 <u>Personnel Services – Salaries</u>				
100 Personnel Services – Salaries				125,203.97
Total Personnel Services – Salaries				\$125,203.97
200 <u>Personnel Services – Employee Benefits</u>				
210 Group Insurance – Contracted Provider				45,752.50
220 Social Security Contributions				9,487.14
230 PSERS Retirement Contributions				39,133.50
260 Workers' Compensation				1,126.82
270 Group Insurance – Self-Insurance				18,168.72
Total Personnel Services – Employee Benefits				\$113,668.68
400 <u>Purchased Property Services</u>				
430 Repairs and Maintenance Services				9,783.43
440 Rentals				13,248.57
Total Purchased Property Services				\$23,032.00
500 <u>Other Purchased Services</u>				
530 Communications				509.58
Total Other Purchased Services				\$509.58
600 <u>Supplies</u>				
610 General Supplies				72,616.00
650 Supplies & Fees – Technology Related				28,751.13
Total Supplies				\$101,367.13
700 <u>Property</u>				
756 Capitalized Technology Hardware and Equipment– Original				65,032.34
758 Capitalized Technology Software - Original				13,123.89
766 Capitalized Technology Hardware and Equipment– Replacement				32,593.95
Total Property				\$110,750.18
800 <u>Other Objects</u>				
810 Dues and Fees				104.94
Total Other Objects				\$104.94
Total 2810 Planning, Research, Development and Evaluation Services				\$474,636.48

LEA : 116496503 Shamokin Area SD

Printed 3/28/2019 8:53:01 AM

General Fund (10)

2830 Staff Services

<u>Elementary</u>	<u>Secondary</u>	<u>Federal</u>	<u>Total</u>
-------------------	------------------	----------------	--------------

300 Purchased Professional and Technical Services

324 Professional Educational Services – Employee Training and Development Services		3,514.97	5,219.97
--	--	----------	----------

Total Purchased Professional and Technical Services		\$3,514.97	\$5,219.97
--	--	-------------------	-------------------

500 Other Purchased Services

580 Travel			205.49
------------	--	--	--------

Total Other Purchased Services			\$205.49
---------------------------------------	--	--	-----------------

Total 2830 Staff Services		\$3,514.97	\$5,425.46
----------------------------------	--	-------------------	-------------------

LEA : 116496503 Shamokin Area SD

Printed 3/28/2019 8:53:01 AM

General Fund (10)

2834 Staff Development Services – Non-Instructional, Certified Staff Only	<u>Elementary</u>	<u>Secondary</u>	<u>Federal</u>	<u>Total</u>
300 <u>Purchased Professional and Technical Services</u>				
324 Professional Educational Services – Employee Training and Development Services			2,575.00	3,030.00
Total Purchased Professional and Technical Services			\$2,575.00	\$3,030.00
500 <u>Other Purchased Services</u>				
580 Travel				171.05
Total Other Purchased Services				\$171.05
Total 2834 Staff Development Services – Non-Instructional, Certified Staff Only			\$2,575.00	\$3,201.05

LEA : 116496503 Shamokin Area SD

Printed 3/28/2019 8:53:01 AM

General Fund (10)

2836 Staff Development Services – Non-Instructional, Non-Certified Staff Only	<u>Elementary</u>	<u>Secondary</u>	<u>Federal</u>	<u>Total</u>
300 <u>Purchased Professional and Technical Services</u>				
324 Professional Educational Services – Employee Training and Development Services			939.97	2,189.97
Total Purchased Professional and Technical Services			\$939.97	\$2,189.97
500 <u>Other Purchased Services</u>				
580 Travel				34.44
Total Other Purchased Services				\$34.44
Total 2836 Staff Development Services – Non-Instructional, Non-Certified Staff Only			\$939.97	\$2,224.41

LEA : 116496503 Shamokin Area SD

Printed 3/28/2019 8:53:01 AM

General Fund (10)

2850 State and Federal Agency Liaison Services	<u>Elementary</u>	<u>Secondary</u>	<u>Federal</u>	<u>Total</u>
100 <u>Personnel Services – Salaries</u>				
100 Personnel Services – Salaries			11,358.75	11,358.75
Total Personnel Services – Salaries			\$11,358.75	\$11,358.75
200 <u>Personnel Services – Employee Benefits</u>				
210 Group Insurance – Contracted Provider			2,512.49	2,512.49
220 Social Security Contributions			872.19	872.19
230 PSERS Retirement Contributions			3,316.83	3,316.83
260 Workers' Compensation			102.36	102.36
Total Personnel Services – Employee Benefits			\$6,803.87	\$6,803.87
600 <u>Supplies</u>				
610 General Supplies				13.05
Total Supplies				\$13.05
Total 2850 State and Federal Agency Liaison Services			\$18,162.62	\$18,175.67

LEA : 116496503 Shamokin Area SD

Printed 3/28/2019 8:53:06 AM

General Fund (10)	
3000 Operation of Non-Instructional Services	<u>Total</u>
100 <u>Personnel Services – Salaries</u>	
100 Personnel Services – Salaries	243,937.24
Total Personnel Services – Salaries	\$243,937.24
200 <u>Personnel Services – Employee Benefits</u>	
210 Group Insurance – Contracted Provider	25,051.02
220 Social Security Contributions	18,606.77
230 PSERS Retirement Contributions	46,106.62
250 Unemployment Compensation	818.73
260 Workers' Compensation	2,195.93
Total Personnel Services – Employee Benefits	\$92,779.07
300 <u>Purchased Professional and Technical Services</u>	
329 Professional Educational Services – Other	100.00
330 Other Professional Services	38,175.00
390 Other Purchased Professional and Technical Services	30,000.00
Total Purchased Professional and Technical Services	\$68,275.00
400 <u>Purchased Property Services</u>	
410 Cleaning Services	735.00
430 Repairs and Maintenance Services	10,090.71
440 Rentals	3,755.36
Total Purchased Property Services	\$14,581.07
500 <u>Other Purchased Services</u>	
510 Student Transportation Services	38,216.58
520 Insurance – General	16,050.00
530 Communications	367.56
580 Travel	4,019.67
Total Other Purchased Services	\$58,653.81
600 <u>Supplies</u>	
610 General Supplies	42,462.41
630 Food	803.82
640 Books and Periodicals	7,861.15
Total Supplies	\$51,127.38
700 <u>Property</u>	
752 Capital Equipment – Original and Additional	2,974.99
Total Property	\$2,974.99
800 <u>Other Objects</u>	
810 Dues and Fees	11,103.61
860 Grants To Municipal and Community Service Organizations	2,000.00
890 Miscellaneous Expenditures	9,717.75
Total Other Objects	\$22,821.36
Total 3000 Operation of Non-Instructional Services	\$555,149.92

LEA : 116496503 Shamokin Area SD

Printed 3/28/2019 8:53:06 AM

General Fund (10)				
3200 Student Activities	<u>Elementary</u>	<u>Secondary</u>	<u>Federal</u>	<u>Total</u>
100 <u>Personnel Services – Salaries</u>				
100 Personnel Services – Salaries				241,405.83
Total Personnel Services – Salaries				\$241,405.83
200 <u>Personnel Services – Employee Benefits</u>				
210 Group Insurance – Contracted Provider				25,051.02
220 Social Security Contributions				18,413.12
230 PSERS Retirement Contributions				45,282.14
250 Unemployment Compensation				818.73
260 Workers' Compensation				2,173.13
Total Personnel Services – Employee Benefits				\$91,738.14
300 <u>Purchased Professional and Technical Services</u>				
330 Other Professional Services				38,175.00
390 Other Purchased Professional and Technical Services				30,000.00
Total Purchased Professional and Technical Services				\$68,175.00
400 <u>Purchased Property Services</u>				
410 Cleaning Services				735.00
430 Repairs and Maintenance Services				10,090.71
440 Rentals				3,740.00
Total Purchased Property Services				\$14,565.71
500 <u>Other Purchased Services</u>				
510 Student Transportation Services				38,216.58
520 Insurance – General				16,050.00
530 Communications				367.56
580 Travel				4,019.67
Total Other Purchased Services				\$58,653.81
600 <u>Supplies</u>				
610 General Supplies				41,538.53
630 Food				406.50
Total Supplies				\$41,945.03
700 <u>Property</u>				
752 Capital Equipment – Original and Additional				2,974.99
Total Property				\$2,974.99
800 <u>Other Objects</u>				
810 Dues and Fees				11,103.61
890 Miscellaneous Expenditures				9,717.75
Total Other Objects				\$20,821.36
Total 3200 Student Activities				\$540,279.87

LEA : 116496503 Shamokin Area SD

Printed 3/28/2019 8:53:06 AM

General Fund (10)				
3300 Community Services	<u>Elementary</u>	<u>Secondary</u>	<u>Federal</u>	<u>Total</u>
100 <u>Personnel Services – Salaries</u>				
100 Personnel Services – Salaries			2,531.41	2,531.41
Total Personnel Services – Salaries			\$2,531.41	\$2,531.41
200 <u>Personnel Services – Employee Benefits</u>				
220 Social Security Contributions			193.65	193.65
230 PSERS Retirement Contributions			824.48	824.48
260 Workers’ Compensation			22.80	22.80
Total Personnel Services – Employee Benefits			\$1,040.93	\$1,040.93
300 <u>Purchased Professional and Technical Services</u>				
329 Professional Educational Services – Other			100.00	100.00
Total Purchased Professional and Technical Services			\$100.00	\$100.00
400 <u>Purchased Property Services</u>				
440 Rentals			15.36	15.36
Total Purchased Property Services			\$15.36	\$15.36
600 <u>Supplies</u>				
610 General Supplies			584.37	584.37
630 Food			397.32	397.32
640 Books and Periodicals			7,861.15	7,861.15
Total Supplies			\$8,842.84	\$8,842.84
800 <u>Other Objects</u>				
860 Grants To Municipal and Community Service Organizations				2,000.00
Total Other Objects				\$2,000.00
Total 3300 Community Services			\$12,530.54	\$14,530.54

LEA : 116496503 Shamokin Area SD

Printed 3/28/2019 8:53:06 AM

General Fund (10)				
3400 Scholarships and Awards	<u>Elementary</u>	<u>Secondary</u>	<u>Federal</u>	<u>Total</u>
600 <u>Supplies</u>				
610 General Supplies				339.51
Total Supplies				\$339.51
Total 3400 Scholarships and Awards				\$339.51

LEA : 116496503 Shamokin Area SD

Printed 3/28/2019 8:53:08 AM

General Fund (10)	
5000 Other Expenditures and Financing Uses	<u>Total</u>
800 <u>Other Objects</u>	
880 Refunds of Prior Years' Receipts	68,929.47
Total Other Objects	\$68,929.47
900 <u>Other Uses of Funds</u>	
930 Fund Transfers	72,529.98
932 Capital Reserve Fund Transfers Applicable To Fund 32	671,152.79
Total Other Uses of Funds	\$743,682.77
Total 5000 Other Expenditures and Financing Uses	\$812,612.24

LEA : 116496503 Shamokin Area SD

Printed 3/28/2019 8:53:08 AM

General Fund (10)

5100 Debt Service / Other Expenditures and Financing Uses	<u>Elementary</u>	<u>Secondary</u>	<u>Federal</u>	<u>Total</u>
800 <u>Other Objects</u>				
880 Refunds of Prior Years' Receipts				68,929.47
Total Other Objects				\$68,929.47
Total 5100 Debt Service / Other Expenditures and Financing Uses				\$68,929.47

LEA : 116496503 Shamokin Area SD

Printed 3/28/2019 8:53:08 AM

General Fund (10)

5130 Refund of Prior Year Revenues / Receipts	<u>Elementary</u>	<u>Secondary</u>	<u>Federal</u>	<u>Total</u>
800 <u>Other Objects</u>				
880 Refunds of Prior Years' Receipts				68,929.47
Total Other Objects				\$68,929.47
Total 5130 Refund of Prior Year Revenues / Receipts				\$68,929.47

LEA : 116496503 Shamokin Area SD

Printed 3/28/2019 8:53:08 AM

General Fund (10)				
5200 Interfund Transfers – Out	<u>Elementary</u>	<u>Secondary</u>	<u>Federal</u>	<u>Total</u>
900 <u>Other Uses of Funds</u>				
930 Fund Transfers				72,529.98
932 Capital Reserve Fund Transfers Applicable To Fund 32				671,152.79
Total Other Uses of Funds				\$743,682.77
Total 5200 Interfund Transfers – Out				\$743,682.77

LEA : 116496503 Shamokin Area SD

Printed 3/28/2019 8:53:08 AM

General Fund (10)

5230 Capital Projects Fund Transfers	<u>Elementary</u>	<u>Secondary</u>	<u>Federal</u>	<u>Total</u>
900 <u>Other Uses of Funds</u>				
932 Capital Reserve Fund Transfers Applicable To Fund 32				671,152.79
Total Other Uses of Funds				\$671,152.79
Total 5230 Capital Projects Fund Transfers				\$671,152.79

LEA : 116496503 Shamokin Area SD

Printed 3/28/2019 8:53:08 AM

General Fund (10)

5250 Enterprise Fund Transfers	<u>Elementary</u>	<u>Secondary</u>	<u>Federal</u>	<u>Total</u>
900 <u>Other Uses of Funds</u>				
930 Fund Transfers				65,040.72
Total Other Uses of Funds				\$65,040.72
Total 5250 Enterprise Fund Transfers				\$65,040.72

LEA : 116496503 Shamokin Area SD

Printed 3/28/2019 8:53:08 AM

General Fund (10)

5280 Activity Fund Transfers	<u>Elementary</u>	<u>Secondary</u>	<u>Federal</u>	<u>Total</u>
900 <u>Other Uses of Funds</u>				
930 Fund Transfers				7,489.26
Total Other Uses of Funds				\$7,489.26
Total 5280 Activity Fund Transfers				\$7,489.26

LEA : 116496503 Shamokin Area SD

Printed 3/28/2019 8:53:04 AM

Capital Reserve Fund - § 1431 (32)	
2000 Support Services	<u>Total</u>
400 <u>Purchased Property Services</u>	
410 Cleaning Services	23,948.75
420 Utility Services	2,275.00
430 Repairs and Maintenance Services	83,262.64
Total Purchased Property Services	\$109,486.39
700 <u>Property</u>	
752 Capital Equipment – Original and Additional	97,703.87
Total Property	\$97,703.87
Total 2000 Support Services	\$207,190.26

LEA : 116496503 Shamokin Area SD

Printed 3/28/2019 8:53:04 AM

Capital Reserve Fund - § 1431 (32)

2600 Operation and Maintenance of Plant Services

Elementary Secondary Federal Total

400 Purchased Property Services

410 Cleaning Services				23,948.75
420 Utility Services				2,275.00
430 Repairs and Maintenance Services				83,262.64

Total Purchased Property Services				\$109,486.39
--	--	--	--	---------------------

700 Property

752 Capital Equipment – Original and Additional				97,703.87
---	--	--	--	-----------

Total Property				\$97,703.87
-----------------------	--	--	--	--------------------

Total 2600 Operation and Maintenance of Plant Services				\$207,190.26
---	--	--	--	---------------------

LEA : 116496503 Shamokin Area SD

Printed 3/28/2019 8:53:04 AM

Capital Reserve Fund - § 1431 (32)

2620 Operation of Buildings Services	<u>Elementary</u>	<u>Secondary</u>	<u>Federal</u>	<u>Total</u>
400 <u>Purchased Property Services</u>				
420 Utility Services				2,275.00
430 Repairs and Maintenance Services				83,262.64
Total Purchased Property Services				\$85,537.64
700 <u>Property</u>				
752 Capital Equipment – Original and Additional				12,912.87
Total Property				\$12,912.87
Total 2620 Operation of Buildings Services				\$98,450.51

LEA : 116496503 Shamokin Area SD

Printed 3/28/2019 8:53:04 AM

Capital Reserve Fund - § 1431 (32)

2630 Care and Upkeep of Grounds Services

Elementary

Secondary

Federal

Total

400 Purchased Property Services

410 Cleaning Services

23,948.75

Total Purchased Property Services

\$23,948.75

Total 2630 Care and Upkeep of Grounds Services

\$23,948.75

LEA : 116496503 Shamokin Area SD

Printed 3/28/2019 8:53:04 AM

Capital Reserve Fund - § 1431 (32)

2650 Vehicle Operation and Maintenance Services (Other Than Student Transportation Vehicles)	<u>Elementary</u>	<u>Secondary</u>	<u>Federal</u>	<u>Total</u>
700 <u>Property</u>				
752 Capital Equipment – Original and Additional				84,791.00
Total Property				\$84,791.00
Total 2650 Vehicle Operation and Maintenance Services (Other Than Student Transportation Vehicles)				\$84,791.00

LEA : 116496503 Shamokin Area SD

Printed 3/28/2019 8:53:09 AM

Capital Reserve Fund - § 1431 (32)

5000 Other Expenditures and Financing Uses		<u>Total</u>
800 <u>Other Objects</u>		
830 Interest		303,611.21
Total Other Objects		\$303,611.21
900 <u>Other Uses of Funds</u>		
910 Redemption of Principal		429,754.25
Total Other Uses of Funds		\$429,754.25
Total 5000 Other Expenditures and Financing Uses		\$733,365.46

LEA : 116496503 Shamokin Area SD

Printed 3/28/2019 8:53:09 AM

Capital Reserve Fund - § 1431 (32)

5100 Debt Service / Other Expenditures and Financing Uses	<u>Elementary</u>	<u>Secondary</u>	<u>Federal</u>	<u>Total</u>
800 <u>Other Objects</u>				
830 Interest			208,740.23	303,611.21
Total Other Objects			\$208,740.23	\$303,611.21
900 <u>Other Uses of Funds</u>				
910 Redemption of Principal			226,000.00	429,754.25
Total Other Uses of Funds			\$226,000.00	\$429,754.25
Total 5100 Debt Service / Other Expenditures and Financing Uses			\$434,740.23	\$733,365.46

LEA : 116496503 Shamokin Area SD

Printed 3/28/2019 8:53:09 AM

Capital Reserve Fund - § 1431 (32)

5110 Debt Service	<u>Elementary</u>	<u>Secondary</u>	<u>Federal</u>	<u>Total</u>
800 <u>Other Objects</u>				
830 Interest			208,740.23	303,611.21
Total Other Objects			\$208,740.23	\$303,611.21
900 <u>Other Uses of Funds</u>				
910 Redemption of Principal			226,000.00	429,754.25
Total Other Uses of Funds			\$226,000.00	\$429,754.25
Total 5110 Debt Service			\$434,740.23	\$733,365.46

LEA : 116496503 Shamokin Area SD

Printed 3/28/2019 8:53:05 AM

Other Capital Projects Fund (39)

		<u>Total</u>
2000 Support Services		
800 <u>Other Objects</u>		
810 Dues and Fees		99,515.00
Total Other Objects		\$99,515.00
Total 2000 Support Services		\$99,515.00

LEA : 116496503 Shamokin Area SD

Printed 3/28/2019 8:53:05 AM

Other Capital Projects Fund (39)

2300 Support Services – Administration

Elementary

Secondary

Federal

Total

800 Other Objects

810 Dues and Fees

99,515.00

Total Other Objects				\$99,515.00
Total 2300 Support Services – Administration				\$99,515.00

LEA : 116496503 Shamokin Area SD

Printed 3/28/2019 8:53:05 AM

Other Capital Projects Fund (39)				
2390 Other Administration Services	<u>Elementary</u>	<u>Secondary</u>	<u>Federal</u>	<u>Total</u>
800 <u>Other Objects</u>				
810 Dues and Fees				99,515.00
Total Other Objects				\$99,515.00
Total 2390 Other Administration Services				\$99,515.00

LEA : 116496503 Shamokin Area SD

Printed 3/28/2019 8:53:10 AM

Other Capital Projects Fund (39)

5000 Other Expenditures and Financing Uses

Total

800 Other Objects

830 Interest	543.00
--------------	--------

Total Other Objects	\$543.00
----------------------------	-----------------

900 Other Uses of Funds

910 Redemption of Principal	4,160,859.80
-----------------------------	--------------

990 Miscellaneous Other Uses of Funds	24,082.20
---------------------------------------	-----------

Total Other Uses of Funds	\$4,184,942.00
----------------------------------	-----------------------

Total 5000 Other Expenditures and Financing Uses	\$4,185,485.00
---	-----------------------

LEA : 116496503 Shamokin Area SD

Printed 3/28/2019 8:53:10 AM

Other Capital Projects Fund (39)

5100 Debt Service / Other Expenditures and Financing Uses	<u>Elementary</u>	<u>Secondary</u>	<u>Federal</u>	<u>Total</u>
800 <u>Other Objects</u>				
830 Interest				543.00
Total Other Objects				\$543.00
900 <u>Other Uses of Funds</u>				
910 Redemption of Principal				4,160,859.80
990 Miscellaneous Other Uses of Funds				24,082.20
Total Other Uses of Funds				\$4,184,942.00
Total 5100 Debt Service / Other Expenditures and Financing Uses				\$4,185,485.00

LEA : 116496503 Shamokin Area SD

Printed 3/28/2019 8:53:10 AM

Other Capital Projects Fund (39)

5110 Debt Service	<u>Elementary</u>	<u>Secondary</u>	<u>Federal</u>	<u>Total</u>
800 <u>Other Objects</u>				
830 Interest				543.00
Total Other Objects				\$543.00
Total 5110 Debt Service				\$543.00

LEA : 116496503 Shamokin Area SD

Printed 3/28/2019 8:53:10 AM

Other Capital Projects Fund (39)

5120 Debt Service – Refunded Bonds

<u>Elementary</u>	<u>Secondary</u>	<u>Federal</u>	<u>Total</u>
-------------------	------------------	----------------	--------------

900 Other Uses of Funds

910 Redemption of Principal			4,160,859.80
-----------------------------	--	--	--------------

Total Other Uses of Funds			\$4,160,859.80
----------------------------------	--	--	-----------------------

Total 5120 Debt Service – Refunded Bonds			\$4,160,859.80
---	--	--	-----------------------

LEA : 116496503 Shamokin Area SD

Printed 3/28/2019 8:53:10 AM

Other Capital Projects Fund (39)

5150 Bond Discounts

<u>Elementary</u>	<u>Secondary</u>	<u>Federal</u>	<u>Total</u>
-------------------	------------------	----------------	--------------

900 Other Uses of Funds

990 Miscellaneous Other Uses of Funds				24,082.20
---------------------------------------	--	--	--	-----------

Total Other Uses of Funds				\$24,082.20
----------------------------------	--	--	--	--------------------

Total 5150 Bond Discounts				\$24,082.20
----------------------------------	--	--	--	--------------------

LEA : 116496503 Shamokin Area SD

Printed 3/28/2019 8:53:14 AM

	<u>General Fund(10)</u>	<u>Public Purpose Trust(27)</u>	<u>Other Compt Approved</u> <u>(28)</u>	<u>Athletic / Activity(29)</u>	<u>Capital Reserve (690.</u> <u>1850)(31)</u>
1000 <u>Instruction</u>					
1100 Regular Programs - Elementary / Secondary	12,664,603.21				
1200 Special Programs - Elementary / Secondary	4,453,289.90				
1300 Vocational Education	1,459,450.27				
1400 Other Instructional Programs - Elementary / Secondary	335,668.87				
1500 Nonpublic School Programs	30,663.40				
1800 Pre-Kindergarten	377,029.78				
Total Instruction	\$19,320,705.43				
2000 <u>Support Services</u>					
2100 Support Services - Students	524,751.04				
2200 Support Services - Instructional Staff	714,446.97				
2300 Support Services - Administration	1,544,305.52				
2400 Support Services - Pupil Health	553,896.12				
2500 Support Services - Business	751,538.36				
2600 Operation and Maintenance of Plant Services	2,513,110.60				
2700 Student Transportation Services	1,297,142.60				
2800 Support Services - Central	498,237.61				
Total Support Services	\$8,397,428.82				
3000 <u>Operation of Non-Instructional Services</u>					
3200 Student Activities	540,279.87				
3300 Community Services	14,530.54				
3400 Scholarships and Awards	339.51				
Total Operation of Non-Instructional Services	\$555,149.92				
5000 <u>Other Expenditures and Financing Uses</u>					
5100 Debt Service / Other Expenditures and Financing Uses	68,929.47				
5200 Interfund Transfers - Out	743,682.77				
Total Other Expenditures and Financing Uses	\$812,612.24				
TOTAL ACTUAL EXPENDITURES & OTHER FINANCING USES	\$29,085,896.41				

LEA : 116496503 Shamokin Area SD

Printed 3/28/2019 8:53:14 AM

	Capital Reserve (1431)(32)	Other Capital Projects Fund(39)	Debt Service(40)	Permanent(90)	Total
1000 Instruction					
1100 Regular Programs - Elementary / Secondary					12,664,603.21
1200 Special Programs - Elementary / Secondary					4,453,289.90
1300 Vocational Education					1,459,450.27
1400 Other Instructional Programs - Elementary / Secondary					335,668.87
1500 Nonpublic School Programs					30,663.40
1800 Pre-Kindergarten					377,029.78
Total Instruction					\$19,320,705.43
2000 Support Services					
2100 Support Services - Students					524,751.04
2200 Support Services - Instructional Staff					714,446.97
2300 Support Services - Administration		99,515.00			1,643,820.52
2400 Support Services - Pupil Health					553,896.12
2500 Support Services - Business					751,538.36
2600 Operation and Maintenance of Plant Services	207,190.26				2,720,300.86
2700 Student Transportation Services					1,297,142.60
2800 Support Services - Central					498,237.61
Total Support Services	\$207,190.26	\$99,515.00			\$8,704,134.08
3000 Operation of Non-Instructional Services					
3200 Student Activities					540,279.87
3300 Community Services					14,530.54
3400 Scholarships and Awards					339.51
Total Operation of Non-Instructional Services					\$555,149.92
5000 Other Expenditures and Financing Uses					
5100 Debt Service / Other Expenditures and Financing Uses	733,365.46	4,185,485.00			4,987,779.93
5200 Interfund Transfers - Out					743,682.77
Total Other Expenditures and Financing Uses	\$733,365.46	\$4,185,485.00			\$5,731,462.70
TOTAL ACTUAL EXPENDITURES & OTHER FINANCING USES	\$940,555.72	\$4,285,000.00			\$34,311,452.13

LEA : 116496503 Shamokin Area SD

Printed 3/28/2019 8:53:18 AM

PSERS Salary Data (Salary Data should relate to the General Fund only)

Amount	Description	Amount
	Total Salary Base for salaries subject to PSERS withholding	12,032,314.91
	Total Federally Funded salaries subject to PSERS withholding	884,012.89

Title I Expenditure Data

Amount	Description	Amount
	Expenditures Funded with Current Title I Funds	750,141.45
	Expenditures Funded with Carry over Title I Funds	10,795.04
Total Title I Expenditure Data		\$760,936.49

Benefits for Staff Relative to Collective
Bargaining Agreements

	OBJECT	COVERED	NOT COVERED	TOTAL
10 General Fund				
	211 Medical Insurance	3,674,732.28		3,674,732.28
	212 Dental Insurance	119,170.99		119,170.99
	215 Eye Care Insurance	31,030.82		31,030.82
	216 Prescription Insurance			
	271 Self-Insurance Medical Benefits	951.19		951.19
	272 Self-Insurance Dental Benefits			
	275 Self-Insurance Eye Care Benefits	295.90		295.90
	276 Self-Insurance Prescription Benefits			
	FUND TOTAL	\$3,826,181.18		\$3,826,181.18
50 Enterprise Fund	No Self Insurance data to report			
	211 Medical Insurance	72,706.47		72,706.47
	212 Dental Insurance	2,157.48		2,157.48
	215 Eye Care Insurance	659.04		659.04
	216 Prescription Insurance			
	271 Self-Insurance Medical Benefits			
	272 Self-Insurance Dental Benefits			
	275 Self-Insurance Eye Care Benefits			
	276 Self-Insurance Prescription Benefits			
	FUND TOTAL	\$75,522.99		\$75,522.99
60 Internal Service Fund	No Self Insurance data to report			
	211 Medical Insurance			
	212 Dental Insurance			
	215 Eye Care Insurance			
	216 Prescription Insurance			
	271 Self-Insurance Medical Benefits			
	272 Self-Insurance Dental Benefits			
	275 Self-Insurance Eye Care Benefits			
	276 Self-Insurance Prescription Benefits			
	FUND TOTAL			
Total of All Funds		\$3,901,704.17		\$3,901,704.17

LEA : 116496503 Shamokin Area SD

Printed 3/28/2019 8:53:20 AM

Function	Special Education (Prior Year)	Nonspecial Education (Prior Year)	Total (Prior Year)	Special Education (Current Year)	Nonspecial Education (Current Year)	Total (Current Year)
2120 Guidance Services	51,374.02	207,641.15	259,015.17	58,006.10	234,446.36	292,452.46
2140 Psychological Services	20,691.67	83,630.63	104,322.30	21,138.44	85,436.36	106,574.80
2150 Speech Pathology and Audiology Services						
2160 Social Work Services	25,678.35	103,785.59	129,463.94	24,936.52	100,787.26	125,723.78
2260 Instruction and Curriculum Development Services	96,631.58	390,561.02	487,192.60	109,090.99	440,918.93	550,009.92
2350 Legal and Accounting Services	4,490.16	18,148.10	22,638.26	15,767.96	63,730.22	79,498.18
2420 Medical Services	1,149.98	4,647.94	5,797.92	1,276.46	5,159.13	6,435.59
2440 Nursing Services	86,012.95	347,643.16	433,656.11	96,636.58	390,581.25	487,217.83
2700 Student Transportation Services	237,331.57	959,235.72	1,196,567.29	257,280.04	1,039,862.56	1,297,142.60
Total	\$523,360.28	\$2,115,293.31	\$2,638,653.59	\$584,133.09	\$2,360,922.07	\$2,945,055.16

LEA : 116496503 Shamokin Area SD

Printed 3/28/2019 8:53:21 AM

(PRINCIPAL AMOUNTS ONLY)								
<u>GOVERNMENTAL FUNDS/ ACTIVITIES</u>	Short-Term Borrowing	General Obligation Bonds/Notes	Authority Building Obligations	Other Long-Term Debt	Other Post- Employment Benefits (OPEB)	Compensated Absences	Net Pension Liability	Total
1. Debt at Beginning of Fiscal Year		7,147,614.00			3,388,231.00	348,797.00	42,966,000.00	53,850,642.00
2. Additional Debt Incurred During Year		4,285,000.00			124,549.00	21,291.00		4,430,840.00
3. Retirements and Repayments		4,590,614.00					245,000.00	4,835,614.00
4. Debt at End of Fiscal Year		6,842,000.00			3,512,780.00	370,088.00	42,721,000.00	53,445,868.00
5. Accreted Interest at End Of Fiscal Year								
6. Total Debt and Accreted Interest		6,842,000.00			3,512,780.00	370,088.00	42,721,000.00	53,445,868.00
7. Current Portion P&I - Due within 1 year		431,000.00				25,000.00		456,000.00
8. Interest Paid during current fiscal year		304,154.00						304,154.00

(PRINCIPAL AMOUNTS ONLY)							
<u>PROPRIETARY FUNDS</u>							
1. Debt at Beginning of Fiscal Year							
2. Additional Debt Incurred During Year							
3. Retirements and Repayments							
4. Debt at End of Fiscal Year							
5. Accreted Interest at End Of Fiscal Year							
6. Total Debt and Accreted Interest							
7. Current Portion P&I - Due within 1 year							
8. Interest Paid during current fiscal year							

LEA : 116496503 Shamokin Area SD

Printed 3/28/2019 8:53:21 AM

Total Principal and Interest Payments Made by Your School - All Funds

Function	Fund		Principal (910)	Principal (920)	Interest (830)	Total (Principal +Interest)	Misc Other Uses (990)
5110	10	General Fund					
5110	20	Special Revenue Funds					
5110	30	Capital Projects Funds	429,754.25		304,154.21	733,908.46	
5110	40	Debt Service Fund					
5110	90	Permanent Fund					
5120	10	General Fund					
5120	20	Special Revenue Funds					
5120	30	Capital Projects Funds	4,160,859.80			4,160,859.80	
5120	40	Debt Service Fund					
Total Debt Payments - Governmental Funds			\$4,590,614.05		\$304,154.21	\$4,894,768.26	

Function	Fund		Principal (910)	Principal (920)	Interest (830)	Total (Principal +Interest)
5110	50	Enterprise Fund				
5110	60	Internal Service Fund				
5120	50	Enterprise Fund				
5120	60	Internal Service Fund				
Total Debt Payments - Proprietary Funds						

LEA : 116496503 Shamokin Area SD

Printed 3/28/2019 8:53:21 AM

Debt Details
Governmental Funds/ Activities

Debt Category	Debt Issue Date (MM/YYYY)	Principal Amounts Only				Current Portion Due Within One Year (Principal and Interest)	Interest Paid During Fiscal Year
		Debt at Beginning of Fiscal Year	Additions	Reductions / Repayments	Debt at End of Fiscal Year		
General Obligation Bonds/Notes – CIB	09/2017		4,285,000.00	155,000.00	4,130,000.00	205,000.00	67,323.00
General Obligation Bonds/Notes – CIB	06/2015	4,209,614.00		4,209,614.00			28,091.00
General Obligation Bonds/Notes – CIB	11/2011	2,938,000.00		226,000.00	2,712,000.00	226,000.00	208,740.00
Compensated Absences		348,797.00	21,291.00		370,088.00	25,000.00	
Other Post-Employment Benefits (OPEB)		3,388,231.00	124,549.00		3,512,780.00		
Net Pension Liability		42,966,000.00		245,000.00	42,721,000.00		
Totals for Debt Entered:		\$53,850,642.00	\$4,430,840.00	\$4,835,614.00	\$53,445,868.00	\$456,000.00	\$304,154.00

LEA : 116496503 Shamokin Area SD

General Fund (10)

Section 1: Tuition/Purchased Services as Reported within Expenditure Detail	Amount
Tuition Reported in General Fund Expenditures 1000-560	2,870,269.06
Purchased Services in General Fund Expenditures 1000-594 and 1000-597	
Section 1 Total	\$2,870,269.06

Section 2: Tuition Paid to Institution Types During Fiscal Year	Tuition Paid For Nonspecial Education	Tuition Paid For Special Education	Total
1 1306 Institutions			
2 Institutionalized Children's Programs			
3 Juveniles Incarcerated in Adult Facilities			
4 Residential Treatment Facilities			
5 Other Local Education Agencies	140,747.42	32,991.26	173,738.68
6 Brick and Mortar Charter Schools			
7 Cyber Charter Schools	1,382,709.42		1,382,709.42
8 Career and Technology Centers	682,965.07	168,977.41	851,942.48
9 Approved Private Schools	31.77	7.86	39.63
10 PA Chartered Schools for the Deaf and Blind			
11 Private Residential Rehabilitative Institutions	180,215.43	44,588.42	224,803.85
12 Juvenile Detention Centers			
13 Special Program Jointures			
14 Other Tuition Not Included Elsewhere In This Section	190,020.60	47,014.40	237,035.00
Section 2 Total	\$2,576,689.71	\$293,579.35	\$2,870,269.06

LEA : 116496503 Shamokin Area SD

Printed 3/28/2019 8:53:24 AM

Food Service / Cafeteria Operations Fund (51)

3000 Operation of Non-Instructional Services	Total
100 Personnel Services – Salaries	
100 Personnel Services – Salaries	70,510.00
Total Personnel Services – Salaries	\$70,510.00
200 Personnel Services – Employee Benefits	
210 Group Insurance – Contracted Provider	75,692.00
220 Social Security Contributions	3,862.00
230 PSERS Retirement Contributions	16,628.00
250 Unemployment Compensation	358.00
260 Workers' Compensation	541.00
Total Personnel Services – Employee Benefits	\$97,081.00
400 Purchased Property Services	
430 Repairs and Maintenance Services	5,913.00
490 Other Purchased Property Services	530.00
Total Purchased Property Services	\$6,443.00
500 Other Purchased Services	
570 Food Service Management	559,117.00
Total Other Purchased Services	\$559,117.00
600 Supplies	
610 General Supplies	65,711.00
620 Energy	45,935.00
630 Food	569,739.00
650 Supplies & Fees – Technology Related	1,889.00
Total Supplies	\$683,274.00
700 Property	
740 Depreciation	44,919.00
Total Property	\$44,919.00
800 Other Objects	
810 Dues and Fees	390.00
Total Other Objects	\$390.00
Total 3000 Operation of Non-Instructional Services	\$1,461,734.00

LEA : 116496503 Shamokin Area SD

Printed 3/28/2019 8:53:24 AM

Food Service / Cafeteria Operations Fund (51)

3100 Food Services	Elementary	Secondary	Federal	Total
100 <u>Personnel Services – Salaries</u>				
100 Personnel Services – Salaries				70,510.00
Total Personnel Services – Salaries				\$70,510.00
200 <u>Personnel Services – Employee Benefits</u>				
210 Group Insurance – Contracted Provider				75,692.00
220 Social Security Contributions				3,862.00
230 PSERS Retirement Contributions				16,628.00
250 Unemployment Compensation				358.00
260 Workers' Compensation				541.00
Total Personnel Services – Employee Benefits				\$97,081.00
400 <u>Purchased Property Services</u>				
430 Repairs and Maintenance Services				5,913.00
490 Other Purchased Property Services				530.00
Total Purchased Property Services				\$6,443.00
500 <u>Other Purchased Services</u>				
570 Food Service Management				559,117.00
Total Other Purchased Services				\$559,117.00
600 <u>Supplies</u>				
610 General Supplies				65,711.00
620 Energy				45,935.00
630 Food				569,739.00
650 Supplies & Fees – Technology Related				1,889.00
Total Supplies				\$683,274.00
700 <u>Property</u>				
740 Depreciation				44,919.00
Total Property				\$44,919.00
800 <u>Other Objects</u>				
810 Dues and Fees				390.00
Total Other Objects				\$390.00
Total 3100 Food Services				\$1,461,734.00

LEA : 116496503 Shamokin Area SD

Printed 3/28/2019 8:53:25 AM

Food Service / Cafeteria Operations Fund (51)	
5000 Other Expenditures and Financing Uses	<u>Total</u>
900 <u>Other Uses of Funds</u>	
990 Miscellaneous Other Uses of Funds	80.00
Total Other Uses of Funds	\$80.00
Total 5000 Other Expenditures and Financing Uses	\$80.00

LEA : 116496503 Shamokin Area SD

Printed 3/28/2019 8:53:25 AM

Food Service / Cafeteria Operations Fund (51)

5520 Special Items – Losses	<u>Elementary</u>	<u>Secondary</u>	<u>Federal</u>	<u>Total</u>
900 <u>Other Uses of Funds</u>				
990 Miscellaneous Other Uses of Funds				80.00
Total Other Uses of Funds				\$80.00
Total 5520 Special Items – Losses				\$80.00

	<u>Food Service(51)</u>	<u>Child Care Operations(52)</u>	<u>Other Enterprise(58)</u>	<u>Internal Service(60)</u>	<u>Total</u>
3000 <u>Operation of Non-Instructional Services</u>					
3100 Food Services	1,461,734.00				1,461,734.00
Total Operation of Non-Instructional Services	\$1,461,734.00				\$1,461,734.00
5000 <u>Other Expenditures and Financing Uses</u>					
5500 Special and Extraordinary Items	80.00				80.00
Total Other Expenditures and Financing Uses	\$80.00				\$80.00
TOTAL ACTUAL EXPENDITURES & OTHER FINANCING USES	\$1,461,814.00				\$1,461,814.00